

17 SEAHAWK AVENUE

Brunswick, Maine | \$1,750,000

FOR SALE



ROBERT BALL

Real Estate Advisor

207-233-4272 | rball@landvest.com

DAVE KILLEN

Commercial Broker

508-451-0020 | dkillen@landvest.com

LandVest | COMMERCIAL

THE PROPERTY



17 SEAHAWK AVENUE BRUNSWICK, ME 04011

Brunswick Landing - Maine's Center for Innovation

Freestanding R&D/ Flex building for sale. The property is adjacent to the Brunswick Executive Airport and can easily access the larger transportation network. This two-story building was completely redeveloped and expanded in 2017, creating an energy efficient structure that is compatible with many uses. The 6,519± sq.ft. building includes seven bathrooms, a kitchen, five ground level offices, a large common area, an elevator and two large second floor flex rooms. Excellent opportunity to be part of the redevelopment in Mid-Coast Maine.

Offering Summary

Sale Price
\$1.75M

Number of Units
1

Lot Size
0.99 acre

Building Size
6,519 sq.ft.

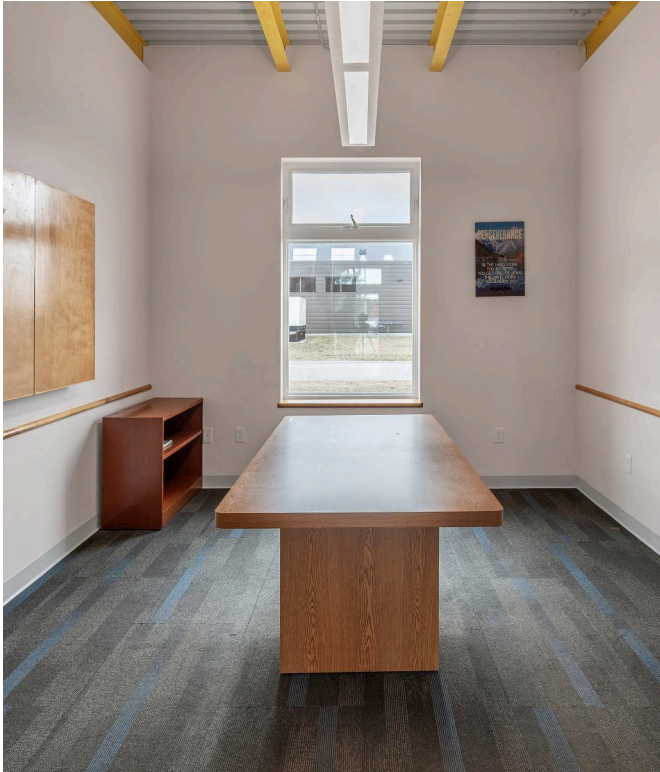
PROPERTY HIGHLIGHTS



- Adjacent to Private Airport
- Flexible 6,519 SF Floor Plan
- Minutes to U.S. Route 1,
- Proximity to Interstate 295
- Energy Efficient Building
- Renovated 2018
- Elevator in Building
- 3 Phase 400-Amp Service
- Double-wide Access Door
- 23 Surface Parking Spaces

Brunswick Landing neighbors include:

Flightdeck Brewing, Wild Oats Bakery, Hangar #6, Mölnlycke MedTech





17 SEAHAWK AVE

HANGAR #6

Brunswick
Executive
Airport

FLIGHTDECK BREWERY

WILD OATS BAKERY

MÖLNLYCKE MEDTECH

24B



ROBERT BALL

Broker and Appraiser
207-233-4272
rball@landvest.com

PROFESSIONAL BACKGROUND

Robert Ball is a Project Manager within LandVest's Real Estate Consulting Group, specializing in the valuation of complex land assets and interests, including timberland, private islands, and conservation easements.

Prior to Robert joining LandVest in 2017, Robert managed the State of Maine's Bigelow Preserve in western Maine. As manager, Robert led a team of forestry and outdoor recreation professionals in the management of 36,000 acres for ecological preservation, recreational opportunities and timber resources. Mr. Ball's management responsibilities included the harvesting and marketing of 15,000 cords of merchantable timber annually; liaising with various outdoor recreation organizations, including the Maine Appalachian Trail Crew, Northern Forest Canoe Trail and Maine Huts and Trails; and conducting forest health surveys in designated ecological reserve areas. Between 2010 and 2015, Robert was Vice President/ Appraiser with Amidon Appraisal Company. His practice included the valuation of conservation easements, forestland and agricultural properties. During his tenure with Amidon, Mr. Ball assisted Dr. James Chalmers, of Chalmers & Associates, LLC, in developing his report on the value impact of the proposed Northern Pass utility transmission line project in New Hampshire, entitled High Voltage Transmission Lines and Real Estate Markets in New Hampshire: A Research Report, June 30, 2015.

Robert Graduated from the State University of New York, College of Environmental Science and Forestry with an A.A.S in Forest Technology in 2003 and a B.S. in Forest Management in 2005. He is a licensed Forester in the state of Maine and a Certified General Appraiser with the state of Maine. Robert is a member of the Freeport Planning Board and, in his free time, enjoys riding motorcycles, skiing, and hiking with his family.



DAVE KILLEN

Commercial Broker

508-451-0020

dkillen@landvest.com

PROFESSIONAL BACKGROUND

Dave Killen is a broker with over 25 years of experience in real estate sales, leasing, and development, construction management, and business negotiations in national and international markets. Dave enjoys operating in a team environment, and combines a disciplined approach with creative strategic thinking wherever necessary to get the best results possible for his clients.

Working his way through the Historic Districts of Nantucket, MA and Charleston, SC, to Belize, CA, Sonoma, CA, and to Boston, MA, Dave's closed deals range from 5000 SF to 97 acres. A proven communicator, Dave graduated from Milton Academy in '93 and Connecticut College in '97. A fifth generation native of Nantucket, MA, Dave is an experienced mariner and student of humanity who can be found during the warmer months sailing or fishing with his son.

EDUCATION

Milton Academy 1993

Connecticut College 1997

USCGA 1995-1996

USCG Master 50 Ton w Aux Sail/Commercial Towing Endorsements

MA Real Estate Broker

MEMBERSHIPS

USA 500 Back Bay Club

USA 500 Commercial Real Estate Deal Generators Roundtable (Co-Facilitator)

ICSC (International Council of Shopping Centers)

Courageous Sailing Center, Charlestown, MA

Nantucket Yacht Club, Nantucket, MA



LandVest® | COMMERCIAL

This Offering Memorandum has been prepared by LandVest, Inc. for a limited number of parties and is proprietary and confidential. Information contained in this offering was gathered from sources deemed reliable. LandVest, Inc. makes no representation to the accuracy or the completeness of the information contained herein, and nothing contained herein is, or shall be relied on as, a promise or representation as to the future performance of the Property. LandVest, Inc. and its employees disclaim any and all liability for representations and warranties, expressed and implied, contained herein, or for omissions from the Memorandum or any other written or oral communication transmitted or made available to the recipient. No photocopy or duplication of this offering will be made by the recipient. Changes in the business or affairs of the Property or Seller since the date of preparation of the Offering Memorandum are not represented herein. It is the responsibility of the prospective purchaser to obtain analysis and verification of information contained herein. Potential buyers should take steps to verify any information contained within the offering and will be responsible for the costs and expenses of their investigation.