

FULLY APPROVED INDUSTRIAL BUILDINGS IN SANTA ROSA FOR SALE OR LEASE

NORTHPOINT & HERITAGE COMMERCE CENTERS

NORTHPOINT PARKWAY, SANTA ROSA, CA

- New Construction - Delivery 2Q 2025



TWO CLASS A Industrial Buildings

- Northpoint ±115,000 SF
- Heritage ±75,000 SF

NEWMARK

Divisible To ±30,700 SF

Manufacturing- Distribution - Warehousing

Ron Reinking

Managing Director

707-888-1854

ron.reinking@nmrk.com

CA DRE #00931004

AVAILABILITY HIGHLIGHTS



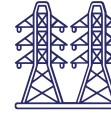
±75,000 SF & ±115,000 SF
Available For Sale or Lease



General Industrial
Zoning (IG)
Distribution/ Warehousing,
Manufacturing



28" Clear Height ESFR
Fire Sprinklers
Concrete Construction
6" reinforced slab floor
Glass-Lined Public Entry



2,000 AMP @277/480
Volt
Power Service



Expansive Shipping &
Receiving Ares With
multiple Dock And
Grade Level Doors



Easy Access to Commute And
Transportation Routes



Globally Recognized
Corporate Neighbors



Convenient Access to
Retail Amenities



Up To 1.43/1,000
Parking Ratio

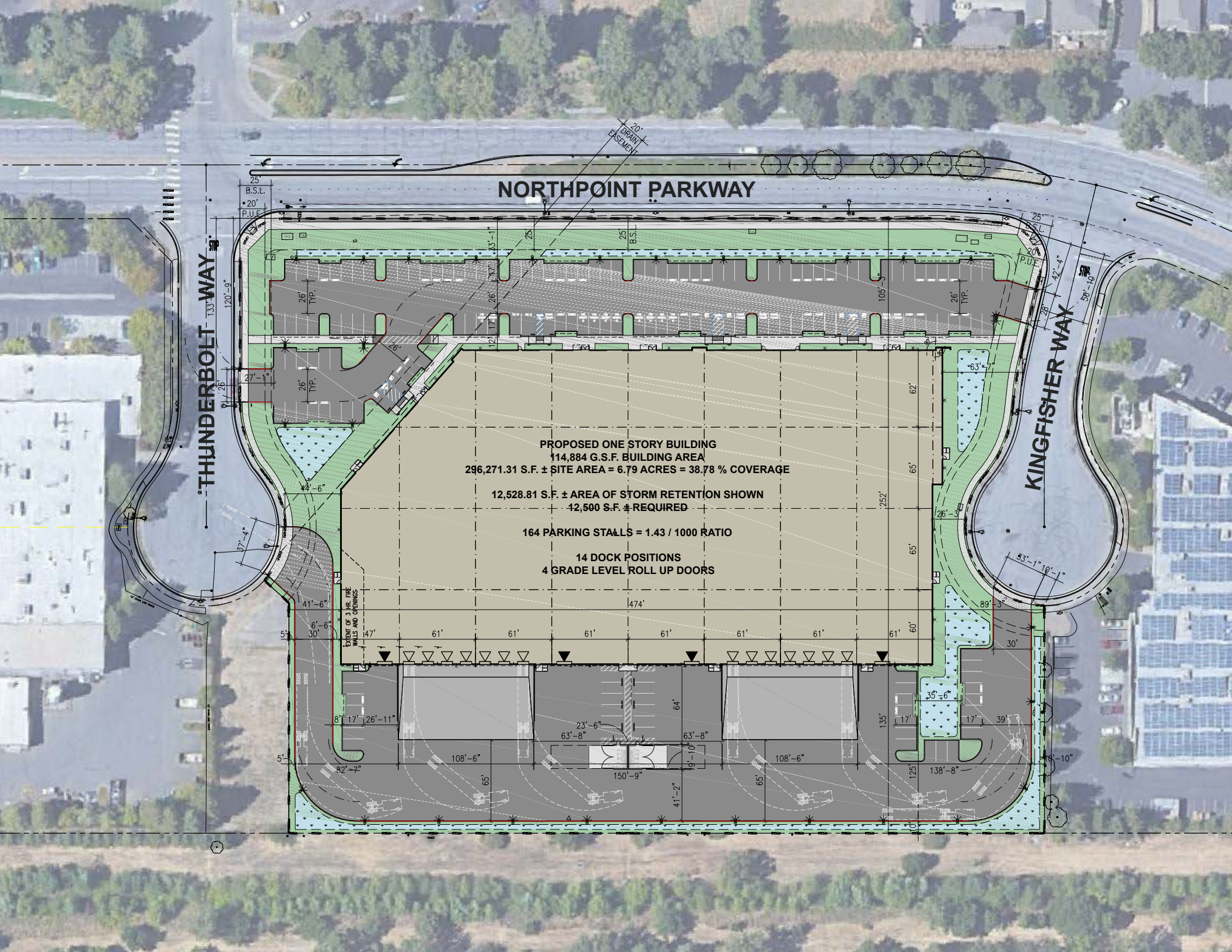


Available
2Q 2025



NORTHPOINT COMMERCE CENTER - ±115,000 SF





NORTHPOINT PARKWAY

THUNDERBOLT WAY

KINGFISHER WAY

PROPOSED ONE STORY BUILDING
114,884 G.S.F. BUILDING AREA
296,271.31 S.F. ± SITE AREA = 6.79 ACRES = 38.78 % COVERAGE

12,528.81 S.F. ± AREA OF STORM RETENTION SHOWN
42,500 S.F. ± REQUIRED

164 PARKING STALLS = 1.43 / 1000 RATIO

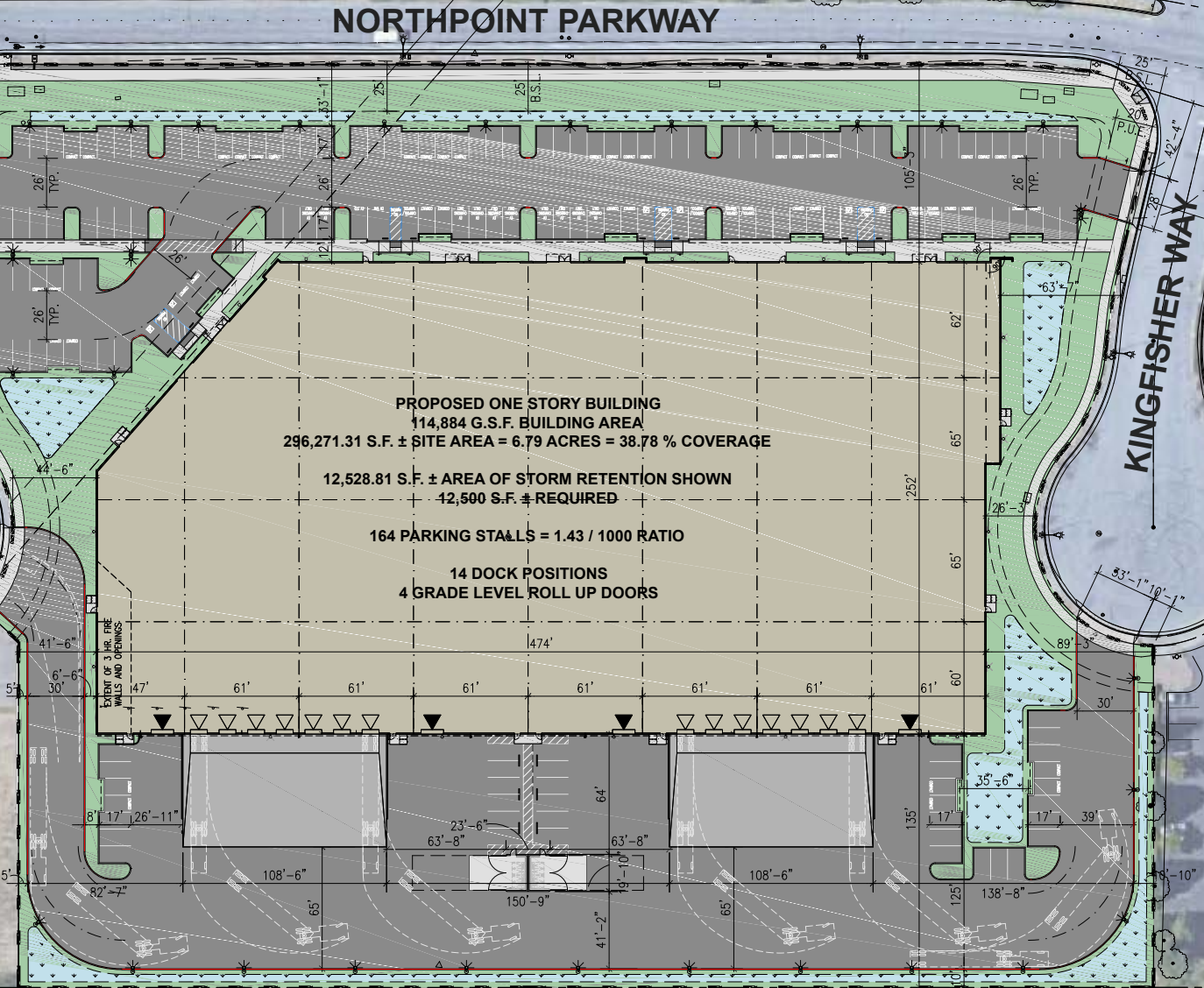
14 DOCK POSITIONS
4 GRADE LEVEL ROLL UP DOORS

25' B.S.L.
 • 20' P.U.E.

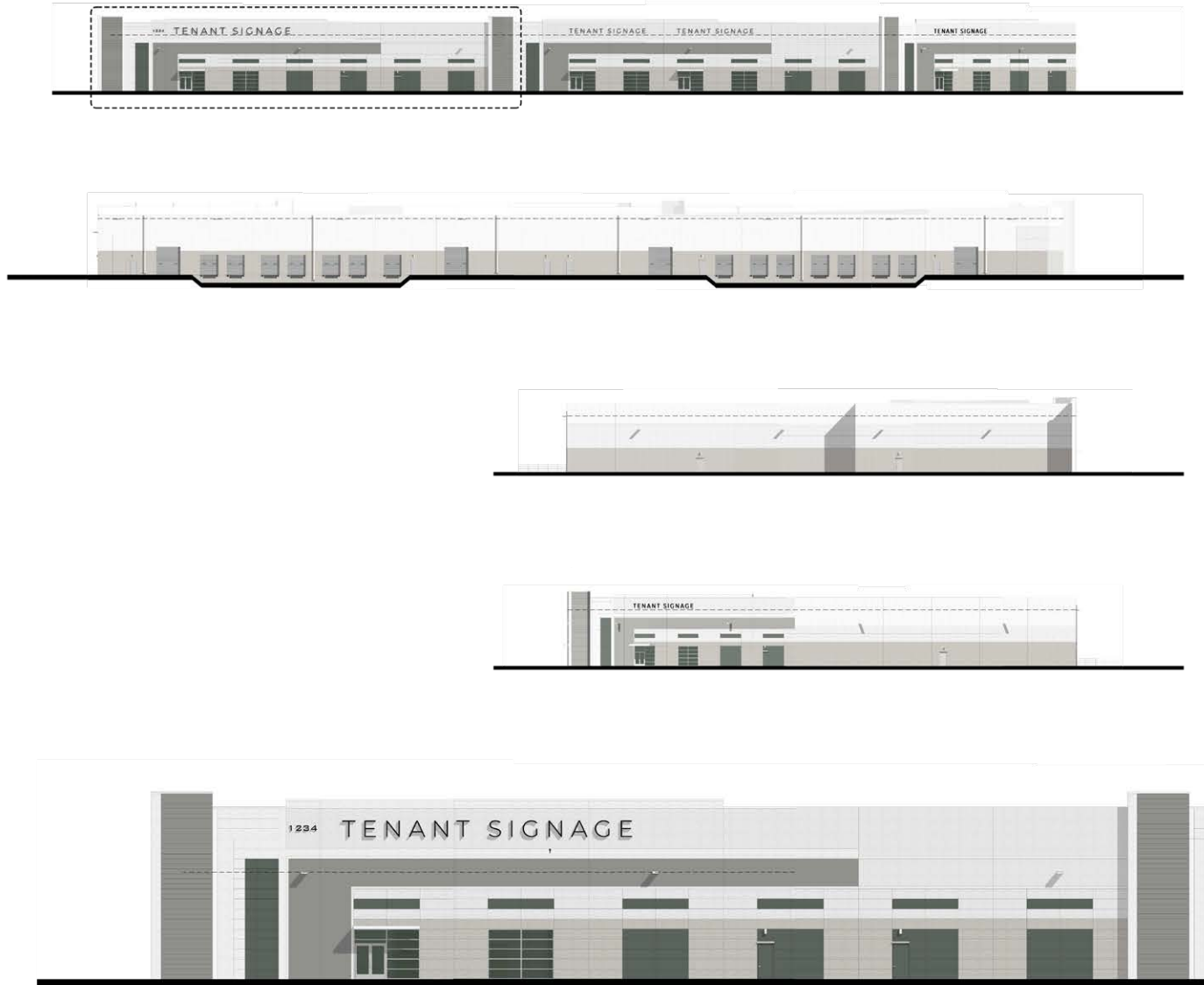
20' DRAIN EASEMENT

25' B.S.L.
 • 20' P.U.E.

EXTENT OF 3 HR. FIRE WALLS AND OPENINGS



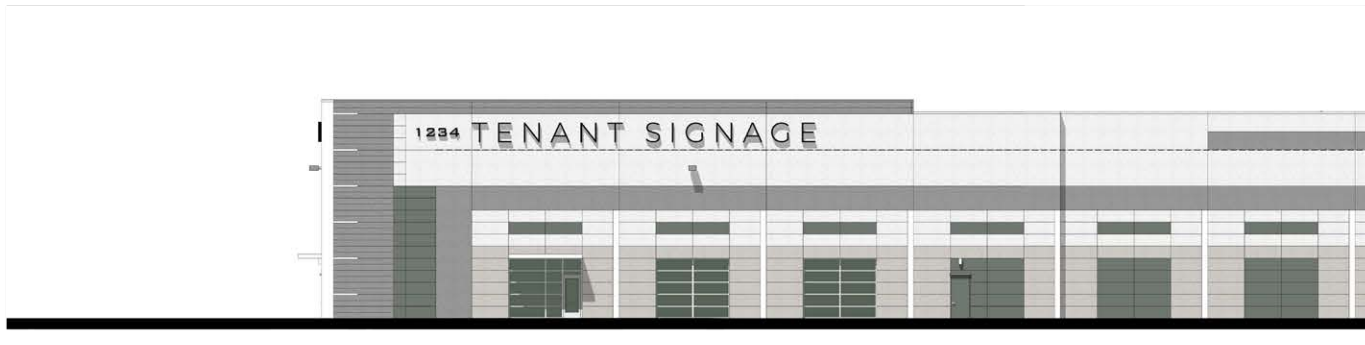
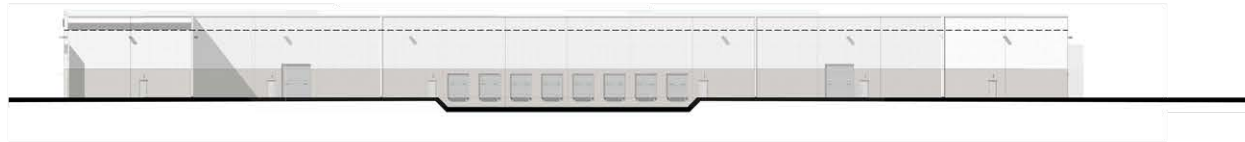
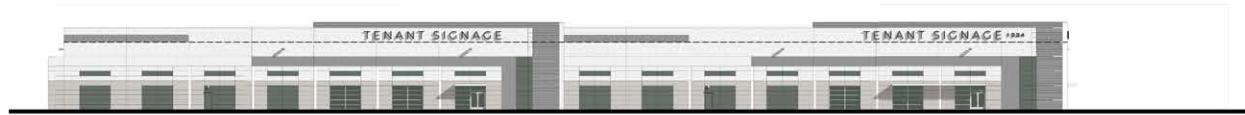
BUILDING ELEVATIONS - NORTHPOINT



HERITAGE COMMERCE CENTER - ±75,000 SF



BUILDING ELEVATIONS - HERITAGE



BUILDING SPECIFICATIONS

- $\pm 74,960$ & $114,884$ SF - Divisible to $\pm 30,700$ SF
- Concrete Tilt Construction / 6" Slab Floor
- 28" Clear Height / ESFR Sprinklers
- Multiple Depressed 9 \times 10 Dock Doors
- Multiple 12 \times 14 Grade Level Loading Doors
- Drive Around Truck Delivery Access
- Project Parking: 241 Spaces 1.42/1,000
- 2,000 AMP @ 277/480 Volt Power
- Zoning: General Industrial (IG) City of Santa Rosa



PROMINENT CORPORATE NEIGHBORS

SONIC.



Amy's Kitchen Inc



HERITAGE

NORTHPOINT



SURROUNDING AMENITIES



- | | | |
|------------------------------------|---------------|-----------------------------|
| 1 St. Joseph Urgent Care | 9 Kings Tires | 17 Mountain Mike's Pizza |
| 2 FoodMaxx | 10 Boot Barn | 18 Xfinity Store by Comcast |
| 3 FedEx Office Print & Ship Center | 11 Starbucks | |
| 4 Del Valle Mexican Restaurant | 12 Subway | |
| 5 Starbucks | 13 Wendy's | |
| 6 O Sushi | 14 Taco Bell | |
| 7 7-Eleven | 15 KFC | |
| 8 Garcia Tires Plus | 16 Applebee's | |



NORTHPOINT & HERITAGE COMMERCE CENTERS SANTA ROSA, CA

NEWMARK

Ron Reinking
Managing Director
707-888-1854
ron.reinking@nrmk.com
CA DRE #00931004

The distributor of this communication is performing acts for which a real estate license is required. The information contained herein has been obtained from sources deemed reliable but has not been verified and no guarantee, warranty or representation, either express or implied, is made with respect to such information. Terms of sale or lease and availability are subject to change or withdrawal without notice. Last edited: February 17, 2024 10:02 AM