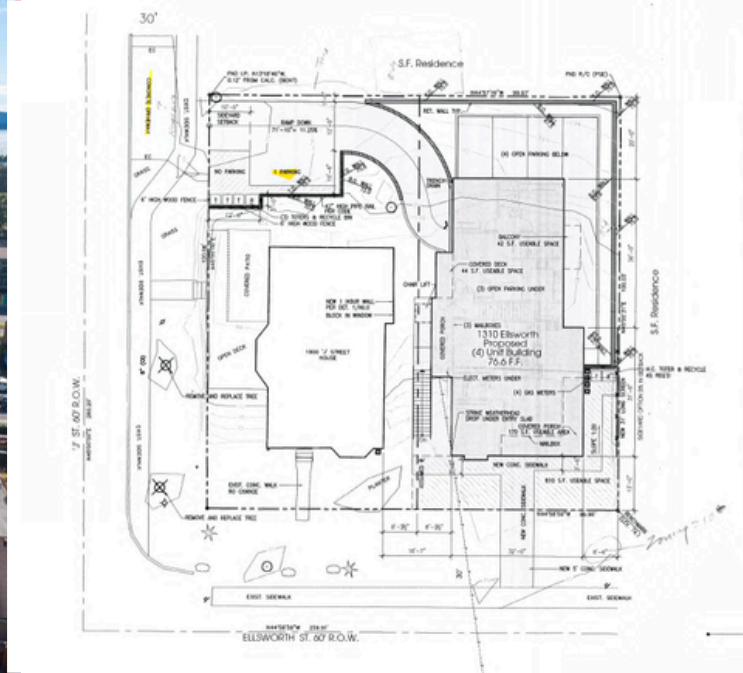


# RESTORED VICTORIAN DUPLEX + DEVELOPMENT SITE



Offered at  
**\$1,650,000**

**1310 Ellsworth St/ 1800 J St  
Bellingham, WA 98225**



**NWMLS #2496953**



- 3 Bedroom 2 Bath: 3086 SQFT
- 1 Bedroom Basement Unit: 960 SQFT
- 9,584 Total Lots SQFT
- 4-Plex Development Potential

**Click Here to  
View Website**



**REMAX**  
WHATCOM COUNTY

**Keith Cook**  
**360-739-5600**  
**Keith@BuyerMax.com**

**BUYERMAX.com**

**David Harmon**  
**360.224.2153**  
**David@BuyerMax.com**

