

Gasperetti Building: 6919 24th Street W, Tacoma



Gasperetti Building	
Property address:	6919 24th Street West, Tacoma WA 98466
Parcel ID	646500-0072
Zoning:	Commercial- light industrial-business park
Year Built	1989
Lot Size	1.42 AC
Building Size	23,966 SF
Lease Type	NNN
Total Space Rentable	7500 SF + 7218 + 4093 SF
Min. Divisible	2000 SF



Lilly Xiao
(206)466-8778
Lilly@skylineproperties.com



6919 24th Street W, Tacoma WA 98466

Features:

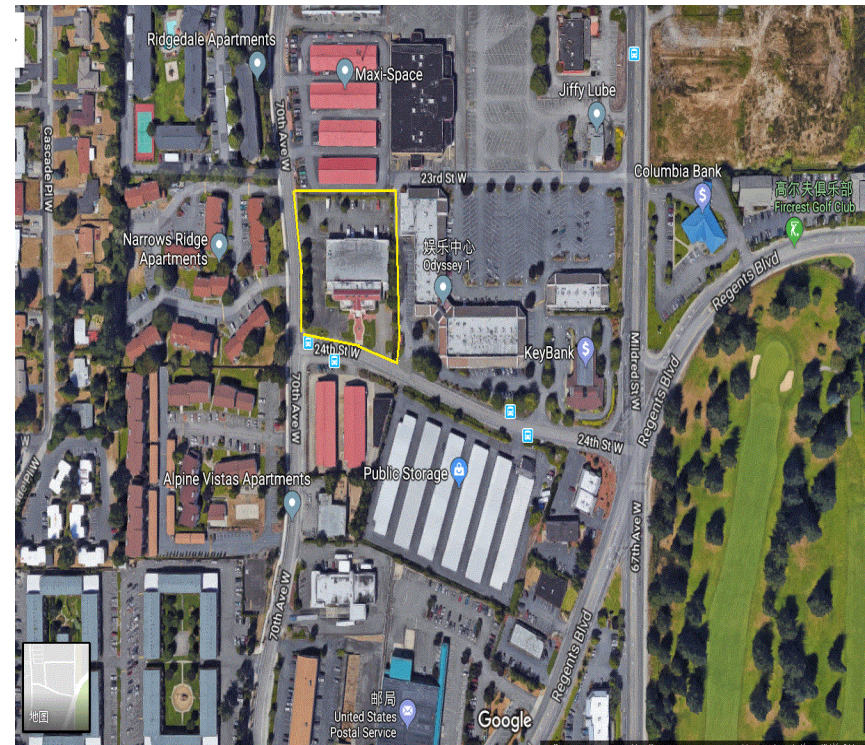
Zoning allowable: Light Industrial-Business Park

Warehousing, distribution, freight movement, storage, printing, production studio, marijuana processor, limited manufacturing, food products, industrial service, contractor yards etc.

Space available and Rates:

	square footage	rent/month	NNN /month
West part of the warehouse	6976	\$5,500	\$1,326
East part of the warehouse	7500	\$6,500	\$1,425
Showroom	7218	\$3,800	\$1,372
Office on 2nd floor	4093	\$3,000	\$778

Amenities: kitchen, bathroom, 50 parking stalls
back Fully-fenced



Lilly Xiao
(206)466-8778
Lilly@skylineproperties.com



Showroom & offices



Lilly Xiao
(206)466-8778
Lilly@skylineproperties.com





Warehouse, loading dock,
multiple kitchen & bath-
rooms



Lilly Xiao
(206)466-8778
Lilly@skylineproperties.com

