

FOR SALE: \$1,975,000

3000 MARKET STREET | OAKLAND



Keith Serne
Director Industrial Services
925.296.3337
keith.serne@tricommercial.com
LIC: #02094384

Eric Rehn, CCIM
Senior Director, Industrial | R&D
925.784.3449
eric.rehn@tricommercial.com
LIC: #01365267

Shomari Carter
Industrial Associate
510.622.8410
shomari.carter@tricommercial.com
LIC: #02298840



3000 MARKET STREET



Distance to Highways	
I-80	1.7 miles
I-880	1.8 miles
CA-24	0.8 miles
I-580	0.5 miles

- Approximate 4,000 sf building with fully paved excess yard (0.76 AC)
- CC-2, S-13 Zoning
- Small separate office in the yard with bathroom
- Storage space both inside and outside available
- Fully secured with electric gate (multiple points of entry)
- Approximate 15' Clear height (buyer to verify)
- 400 amps, 480V of power (buyer to verify)
- Four (4) grade level doors
- Break room with kitchen
- Two (2) restrooms



Keith Serne

925.296.3337

keith.serne@tricommercial.com

LIC: #02094384

Eric Rehn, CCIM

925.784.3449

eric.rehn@tricommercial.com

LIC: #01365267

Shomari Carter

510.622.8410

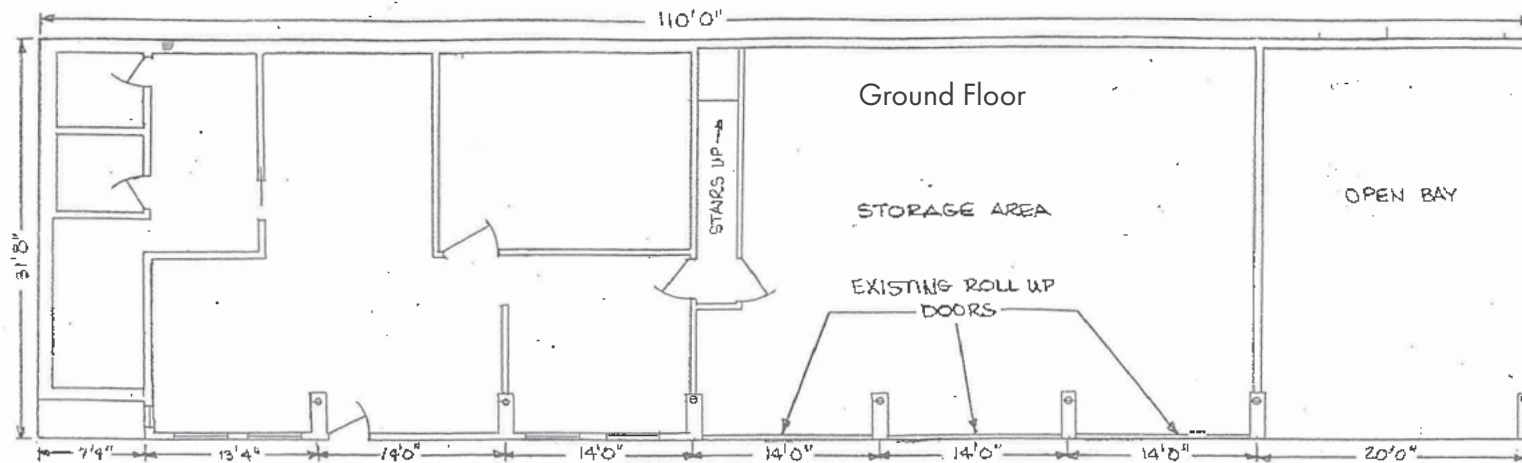
shomari.carter@tricommercial.com

LIC: #02298840



www.tricommercial.com

3000 MARKET STREET



Keith Serne

925.296.3337

keith.serne@tricommercial.com

LIC: #02094384

Eric Rehn, CCIM

925.784.3449

eric.rehn@tricommercial.com

LIC: #01365267

Shomari Carter

510.622.8410

shomari.carter@tricommercial.com

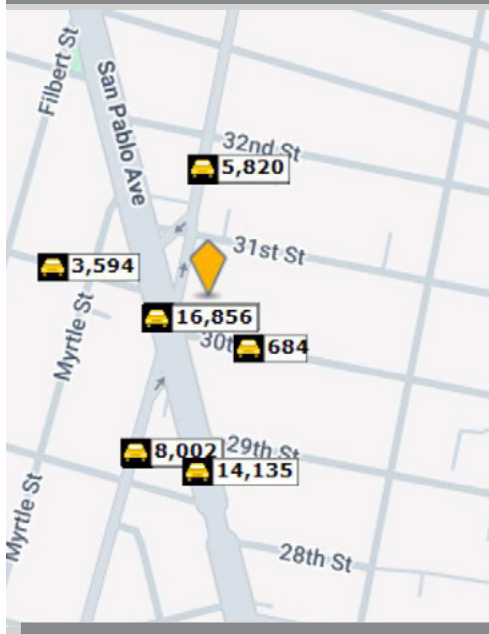
LIC: #02298840



www.tricommercial.com

3000 MARKET STREET

TRAFFIC COUNTS



	AADT
30th St W	3,594
Market St N	5,820
30th St E	684
Market St S	8,002
San Pablo Ave	16,856



TRI is LOCAL

We have been representing properties in the Greater East Bay for decades and we know this market better than any other.



TRI is REGIONAL

TRI offices span the distance between Roseville and SF, granting us exceptional expertise in housing trends across NorCal.



TRI is GLOBAL

Our participation with CORFAC gives us 76 worldwide partnerships, from Korea to Costa Rica.

TRI CORPORATE

1777 Oakland Boulevard, Suite 220
Walnut Creek, CA 94596
(O)925.296.3300

ROSEVILLE AND TRI LAND SERVICES

532 Gibson Drive, Suite 200
Roseville, CA 95678
(O)916.677.8000

SAN FRANCISCO

1 Embarcadero Center, Suite 1200
San Francisco, CA 94111
(O)415.268.2200

SILICON VALLEY

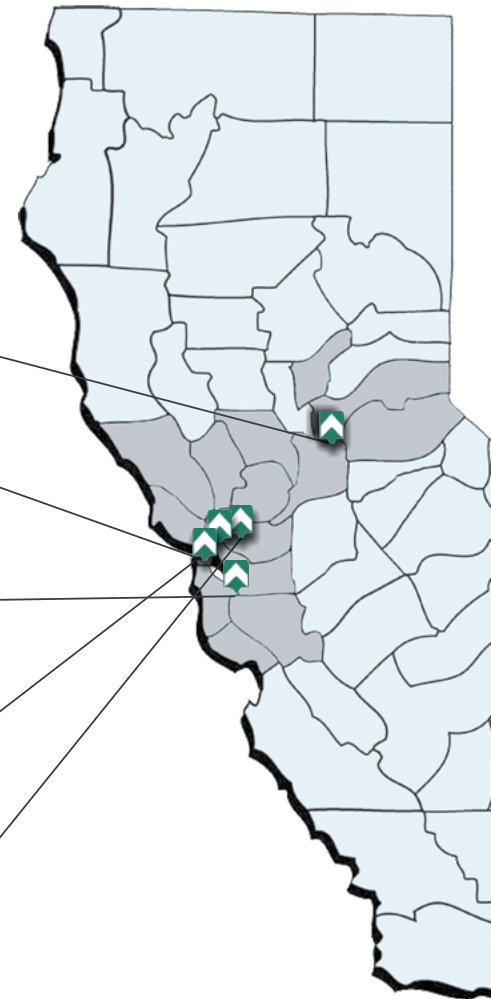
1900 The Alameda, Suite 530
San Jose, CA 95126
(O)408.413.3555

OAKLAND

1404 Franklin Street, Penthouse
Oakland, CA 94612
(O)510.622.8400

WALNUT CREEK

1777 Oakland Boulevard, Suite 220
Walnut Creek, CA 94596
(O)925.296.3300



Keith Serne

925.296.3337

keith.serne@tricommercial.com

LIC: #02094384

Eric Rehn, CCIM

925.784.3449

eric.rehn@tricommercial.com

LIC: #01365267

Shomari Carter

510.622.8410

shomari.carter@tricommercial.com

LIC: #02298840



www.tricommercial.com