

High End Creative Office Space

Sublease Opportunity

8500 Steller Drive

Building 3

Culver City, CA 90232



Matilda Thomas / matilda.thomas@sothebys.realty / 858-354-1633 / DRE 02149384

Sotheby's
INTERNATIONAL REALTY



8500 Steller Drive Building 3 / Culver City CA 90230

Available

Size
 \pm 1,716 sqft

Term
Negotiable

Rent
Negotiable

Parking
4 spots

Sotheby's
INTERNATIONAL REALTY

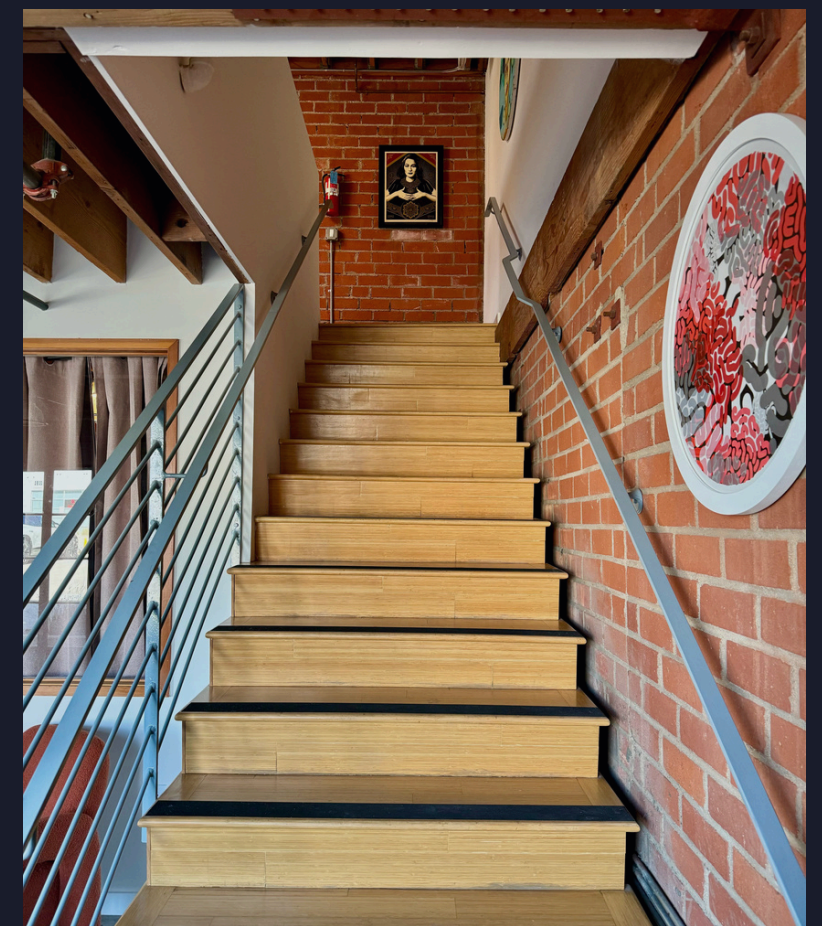
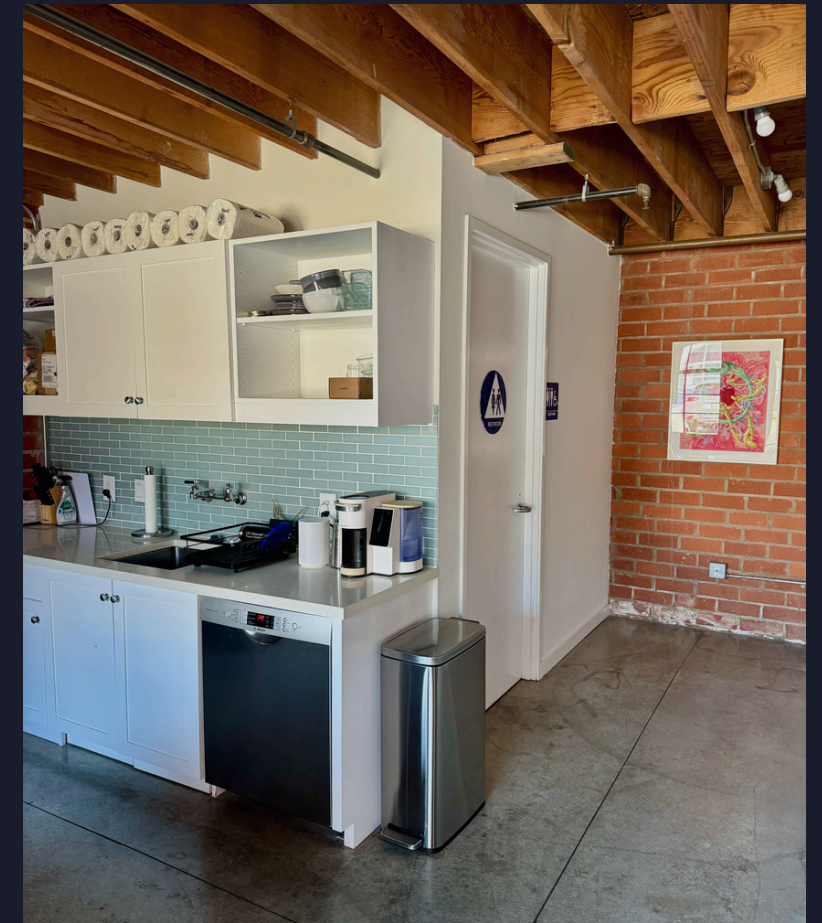


Features

- Available Now
- 4 Parking Spaces
- Multi-level Private Floorplan
- Three Upstairs Offices, One Downstairs Studio
- Sound Proof Studio
- Exceptional Creative Studio in 1940's Renovated Industrial Building
- Skylights & Polished Concrete Floors
- Kitchenette & Private Restroom
- Separately Metered HVAC
- Easy Access to Downtown Culver City
- Close to Metro Expo Line

8500 Steller Drive Building 3 / Culver City CA 90230

Sotheby's
INTERNATIONAL REALTY



8500 Steller Drive Building 3 / Culver City CA 90230

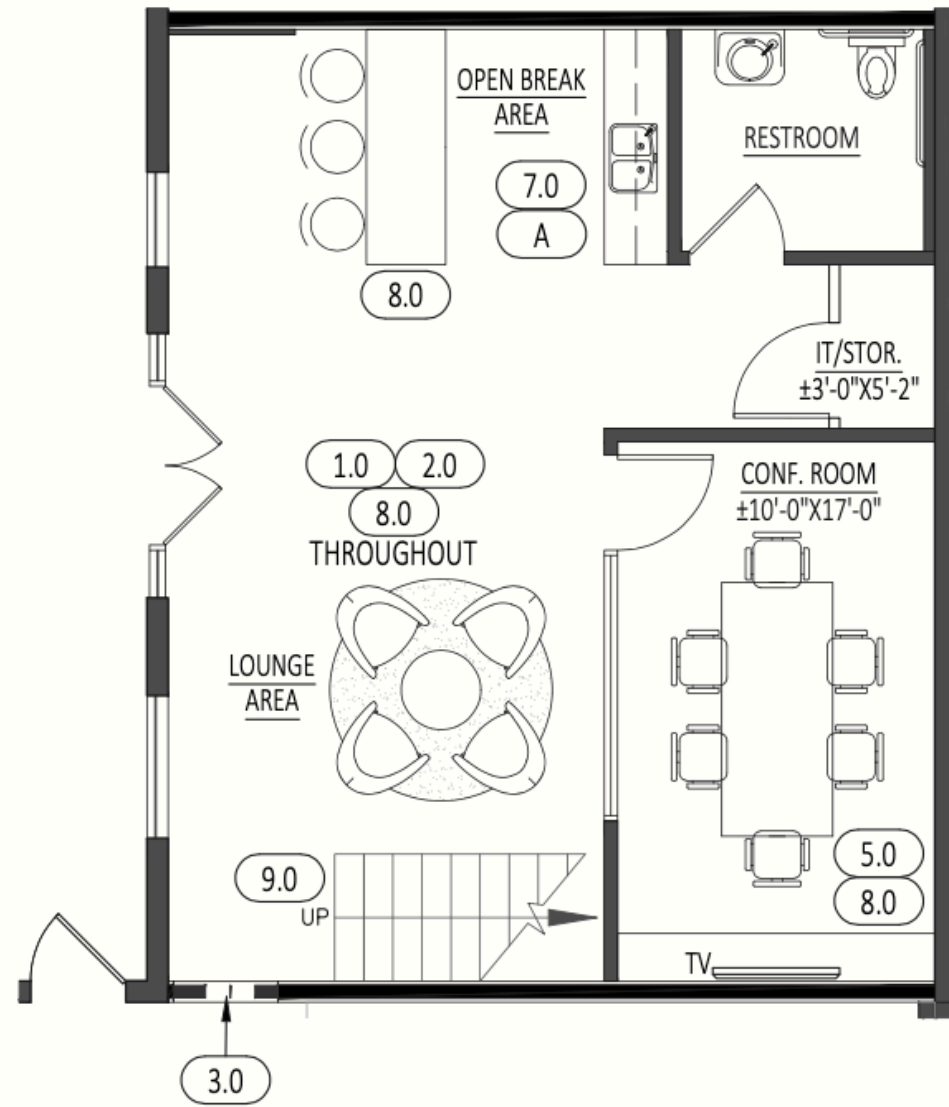


8500 Steller Drive Building 3 / Culver City CA 90230

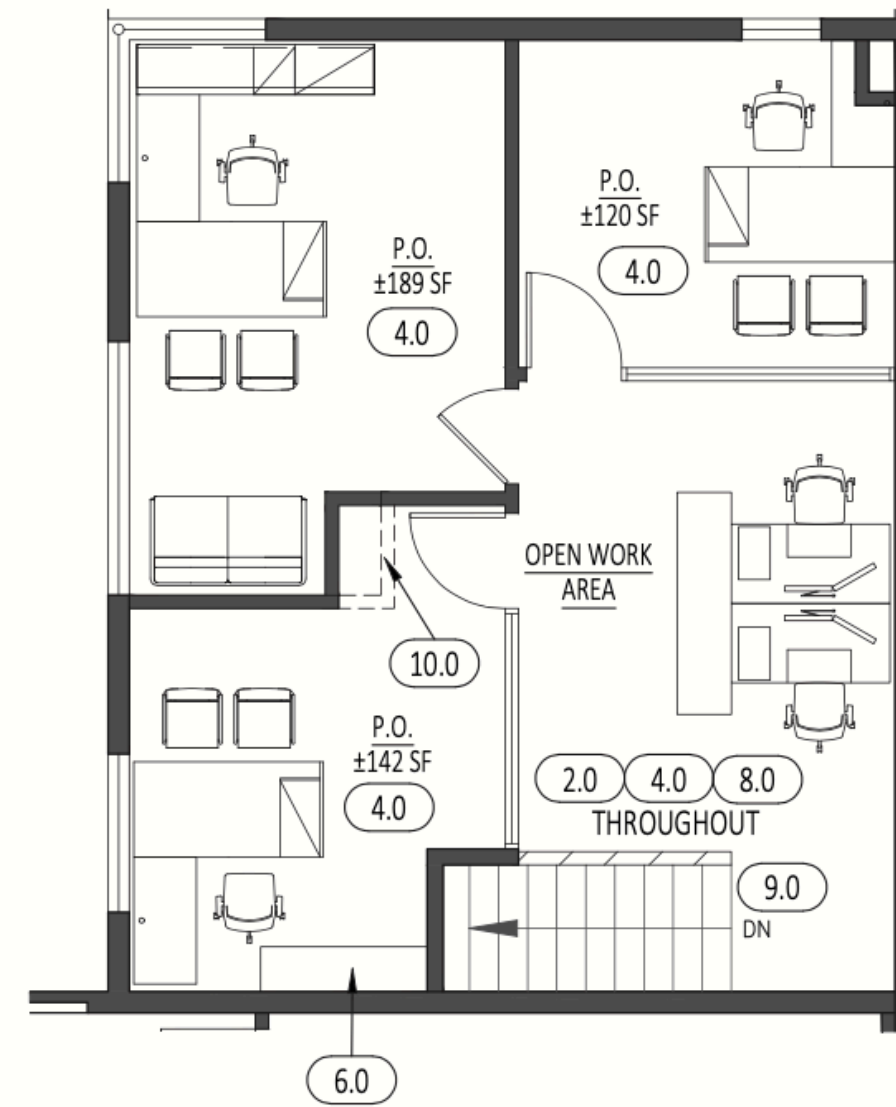


8500 Steller Drive Building 3 / Culver City CA 90230

1ST FLOOR PLAN



2ND FLOOR PLAN



Sotheby's

INTERNATIONAL REALTY

Matilda Thomas
matilda.thomas@sothebys.realty
858-354-1633 / DRE 02149384