



@ WORLD COMMERCE CENTER

## ST. JOHNS COUNTY'S PREMIER LOGISTICS PARK

3405B INTERNATIONAL GOLF PKY, SAINT AUGUSTINE 32092

SPACE AVAILABLE FROM 14,025 SF - 205,700

LEASING INQUIRIES: 904.699.3518 | [IGP-95LOGISTICSPARK.COM](http://IGP-95LOGISTICSPARK.COM)



FOUNDRY  
COMMERCIAL

BARINGS

# PROPERTY HIGHLIGHTS

DELIVERING 2026



## ABOUT

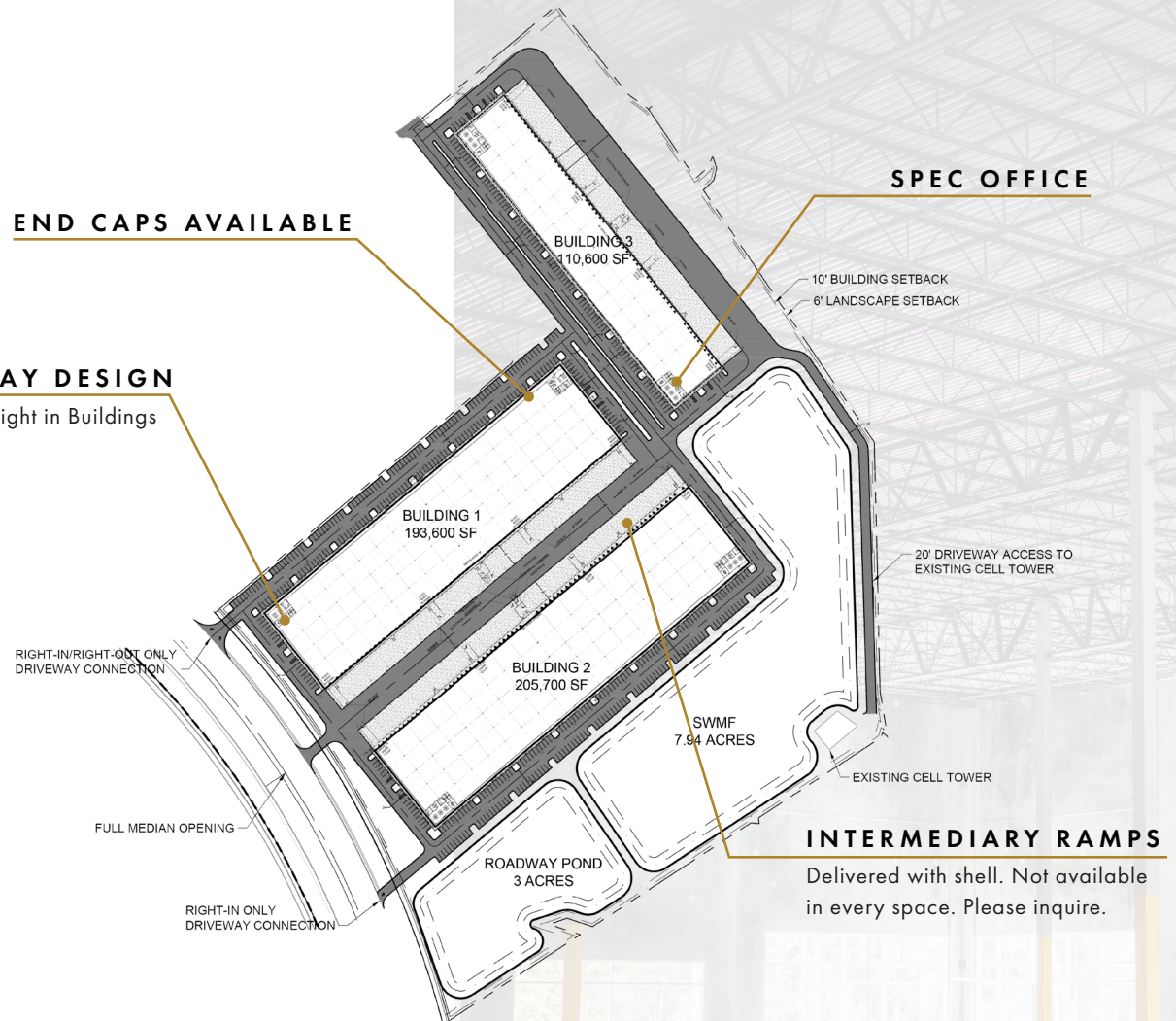
IGP-95 Logistics Park at World Commerce Center, located in the heart of St. Johns County, is a three-building institutional quality warehouse development. Designed with today's logistics users in mind, the park is located within World Commerce Center, at I-95 and International Golf Parkway. World Commerce Center is the premier business park in the South Jacksonville submarket.

IGP-95 Logistics Park is a light Industrial Park providing modern building features for logistics users. Dock high doors, intermediary ramps, and spec offices are all delivered with shell for fast tenant occupancy.

### END CAPS AVAILABLE

### HIGH-BAY DESIGN

32' clear height in Buildings 100 & 200.

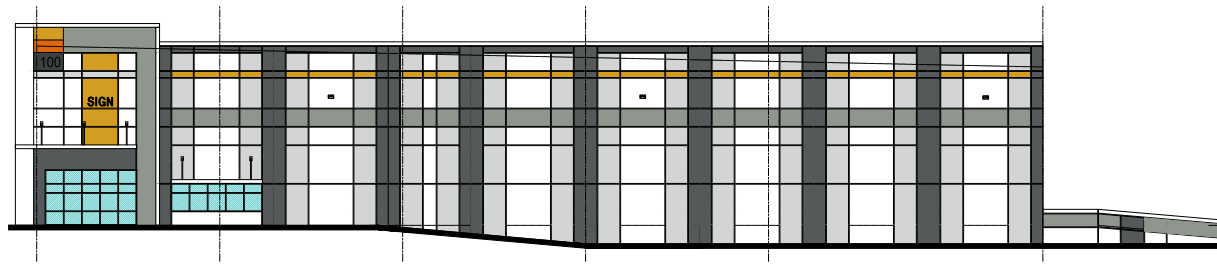


### SPEC OFFICE

### INTERMEDIARY RAMPS

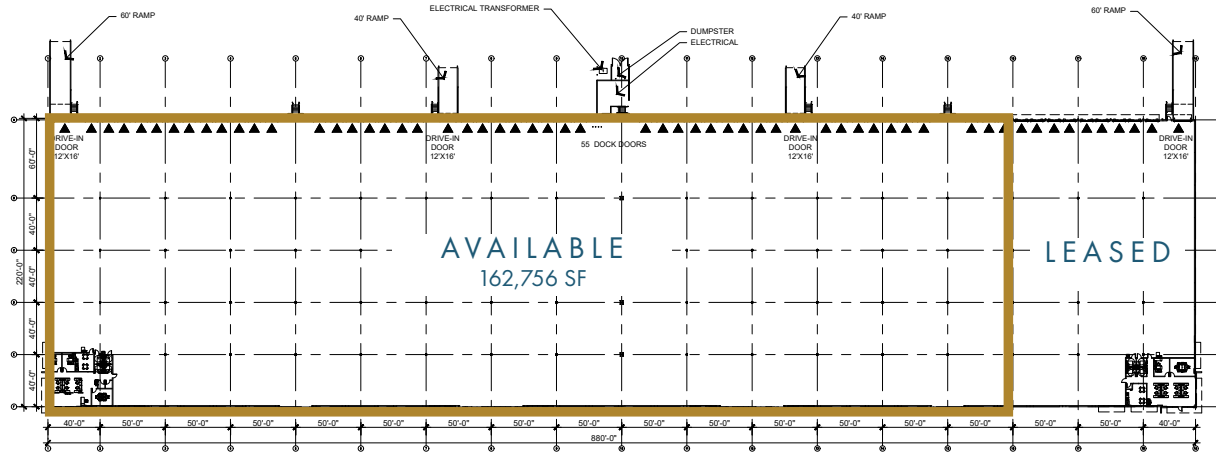
Delivered with shell. Not available in every space. Please inquire.

# BUILDING 100 SPECS

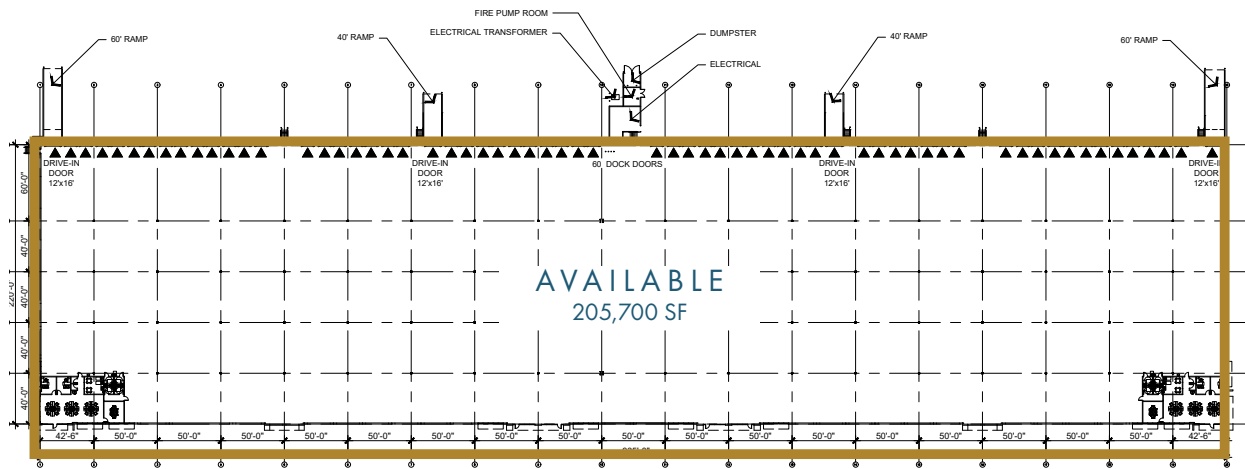
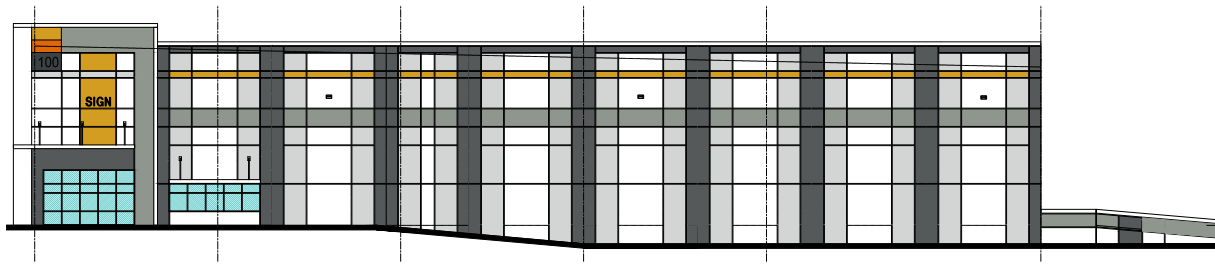


## BUILDING SPECIFICATIONS

TOTAL SF	193,600 SF
OFFICE SPECS	(2) 2,454 SF
DELIVERY	Q3 2024
BLDG DEPTH	220'
LOADING	REAR
CLEAR HEIGHT	32'
BAY SPACING	50'x50'
DOCK DOORS	55
RAMPS	(4) 12'x16'
TRUCK COURT	180' (SHARED)
FIRE PROTECTION	ESFR
ELECTRICAL	3-800 AMP



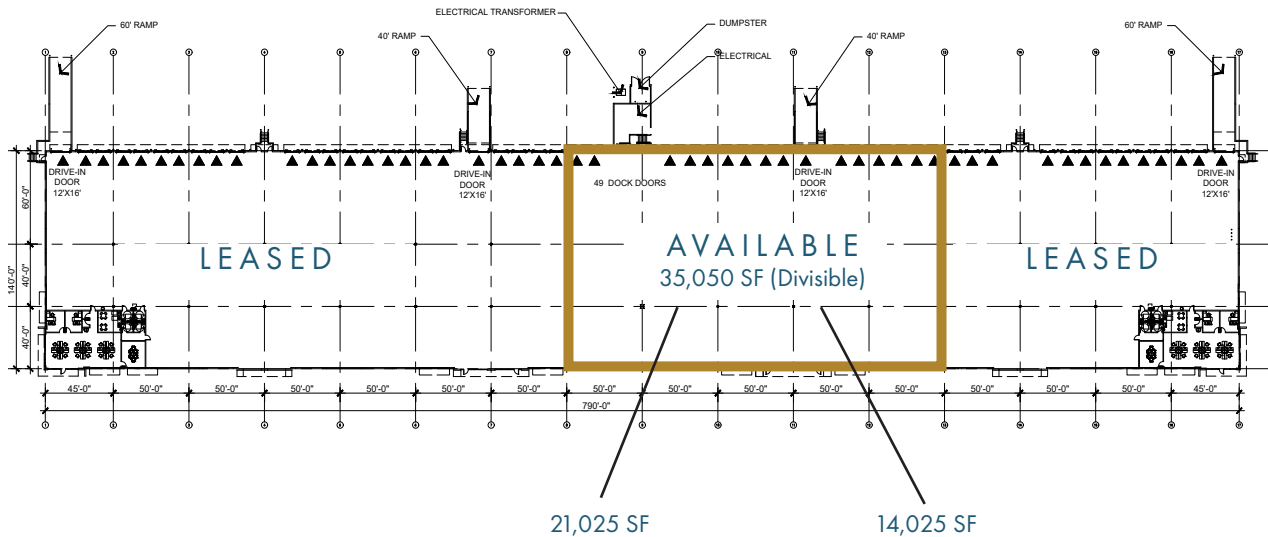
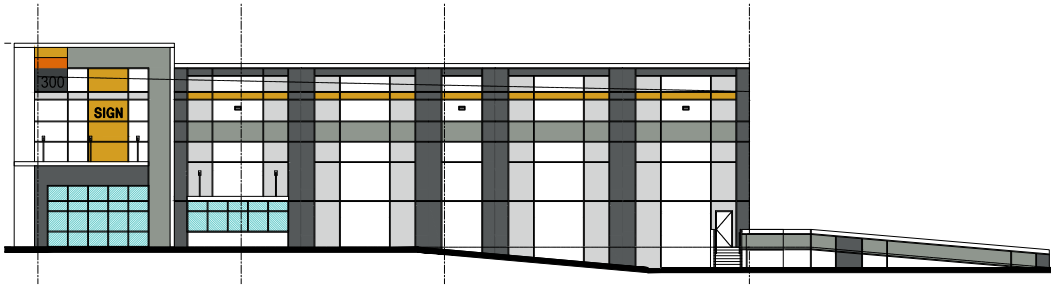
# BUILDING 200 SPECS



## BUILDING SPECIFICATIONS

TOTAL SF	205,700 SF
OFFICE SPECS	(2) 2,454 SF
DELIVERY	Q3 2024
BLDG DEPTH	220'
LOADING	REAR
CLEAR HEIGHT	32'
BAY SPACING	50'x50'
DOCK DOORS	60
RAMPS	(4) 12'x16'
TRUCK COURT	180' (SHARED)
FIRE PROTECTION	ESFR
ELECTRICAL	3-800 AMP

# BUILDING 300 SPECS



## BUILDING SPECIFICATIONS

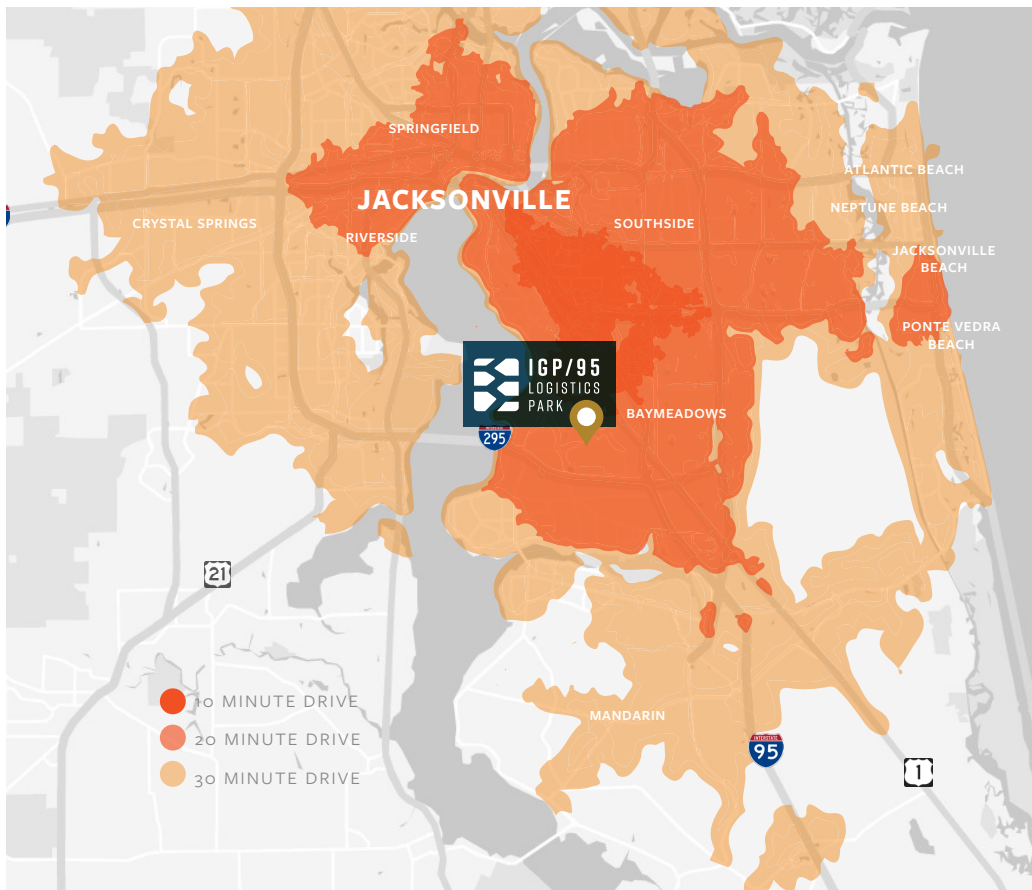
TOTAL SF	110,600 SF
OFFICE SPECS	(2) 2,454 SF
DELIVERY	Q3 2024
BLDG DEPTH	140'
LOADING	REAR
CLEAR HEIGHT	38'
BAY SPACING	50'x50'
DOCK DOORS	49
RAMPS	(4) 12'x16'
TRUCK COURT	120'
FIRE PROTECTION	ESFR
ELECTRICAL	3-800 AMP

# LOCATION & ACCESS



## WORLD COMMERCE CENTER CONVENIENCE

Conveniently located at I-95 and International Golf Parkway, IGP-95 Logistics Park at World Commerce Center provides quick and easy access to all of St. Johns County and South Jacksonville.





LEASING CONTACTS

**MARK SCOTT, SIOR**

Leasing | 904.699.3518

mark.scott@foundrycommercial.com

**NATE WALLACE**

Leasing | 904.847.4974

nate.wallace@foundrycommercial.com

**FOUNDRY COMMERCIAL**

6440 Southpoint Parkway , Suite 100

Jacksonville, FL 32216

foundrycommercial.com

Although the information contained herein was provided by sources believed to be reliable, Foundry Commercial makes no representation, expressed or implied, as to its accuracy and said information is subject to errors, omissions or changes.

**IGP/95**  
**LOGISTICS**  
**PARK**



A DEVELOPMENT BY:

**FOUNDRY**  
COMMERCIAL

**BARINGS**