

DOOR SCHEDULE

TYPE	ELEV	DESCRIPTION	DOOR				FRAME				FIRE RATING	HDW. SET	REMARKS		
			WIDTH	HEIGHT	THKNS.	MAT'L	FINISH	TYPE	JAMB	HEAD				SILL	MAT'L
A	-	Existing Storefront Entry	3'-0"	7'-0"	-	AL/GL	-	-	-	-	AL	-	Existing	Provide new Exit Device	
B	-	Existing Flush Wood	3'-0"	7'-0"	1-3/4"	SC	PTD	-	-	-	HM	PTD	45	Existing	Provide new Exit Device
C	-	Pair Storefront w/ Transom	6'-0"	8'-0"	1-3/4"	AL/GL	-	-	-	-	AL	-	-	See Plans	-
D	-	Flush Wood w/ Full Lite	3'-0"	7'-0"	1-3/4"	SC/GL	PTD	-	-	-	HM	PTD	-	See Plans	-
E	-	Flush Wood	3'-0"	7'-0"	1-3/4"	SC	PTD	-	-	-	HM	PTD	-	See Plans	-

ABBREVIATIONS: SC AL Solid Core Wood Aluminum HC GL Hollow Core Wood Glass MDF STL Solid MDF Steel HM PTD Hollow Metal Painted

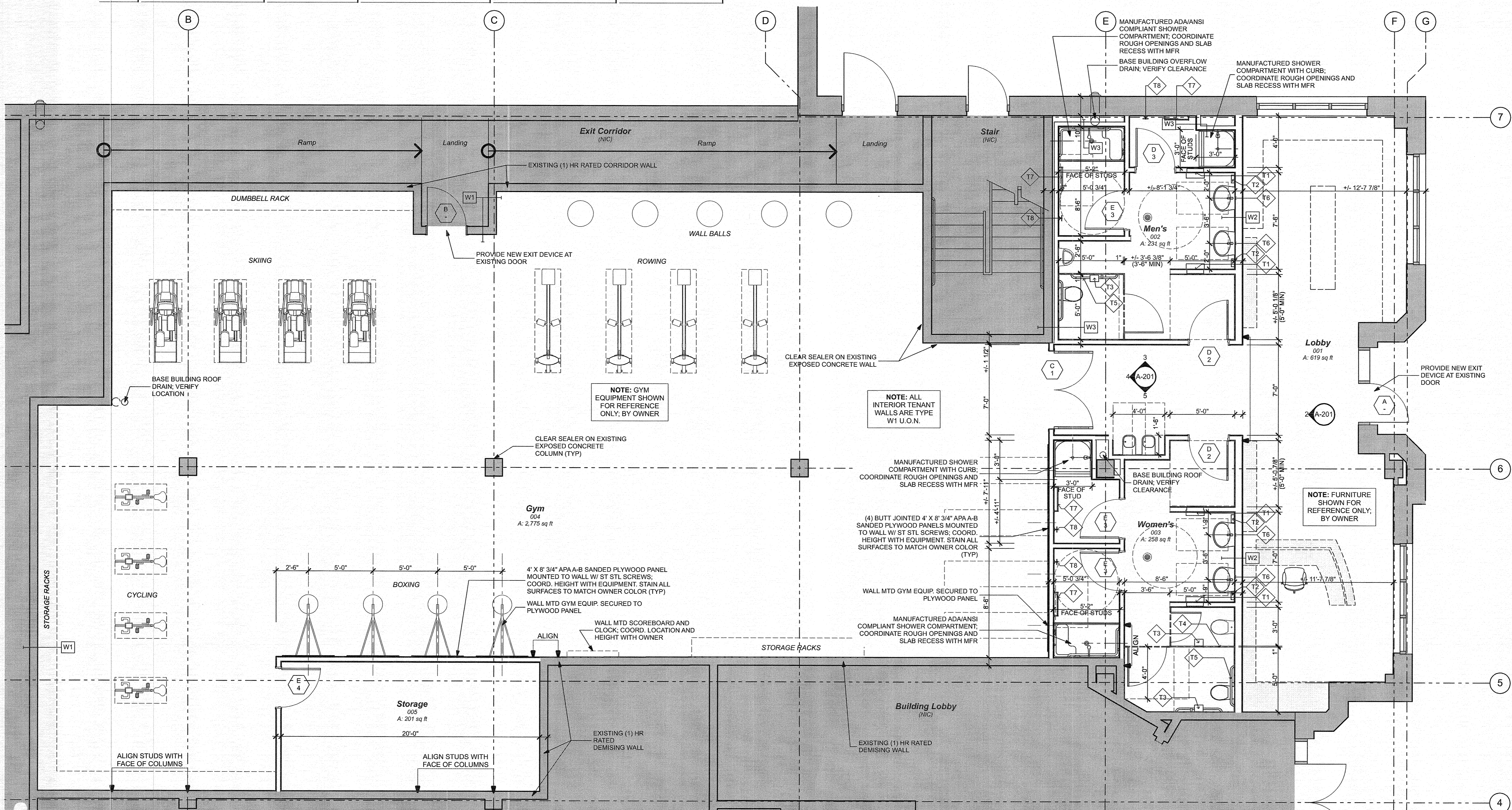
TOILET ACCESSORY SCHEDULE

MARK	DESCRIPTION	SIZE (NOMINAL)	MOUNTING HEIGHT	MFR & MODEL NO.	REMARKS
T1	Recessed Paper Towel Dispenser and Waste Receptacle	13"w x 28"h x 4"d	48" Max to Centerline of Dispenser	Bobrick No. B-369	-
T2	Soap Dispenser		37" to Centerline	Bobrick Contura No. B-2112	Surface Mounted
T3	Toilet Paper Roll Holder		19" to Centerline of Roll	Bobrick Contura No. B-7686	Surface Mounted
T4	Partition Mt'd Sanitary Napkin Disposal		19" to Centerline of Roll	Bobrick No. B-354	Dual Sided
T5	Grab Bars	1-1/2" Diameter	36" to Top of Bar	Bobrick No. B-5806	-
T6	Mirror	24" x 36"	40" to Bottom	Bobrick No. B-165-2436	-
T7	24" Towel Bar		48" to Top of Bar	Bobrick No. B-673	-
T8	Clothes Hooks		48"	Bobrick No. B-233	-

HARDWARE SCHEDULE

HW-1	Pair Interior Storefront Doors; Free swing with no latch.												
	Hinges	2 Sets	-	-	-	Mr Standard	-	-	-	-	-	-	-
	Pulls	2	-	-	-	Mr Standard	-	-	-	-	-	-	-
	Push Bar	2	-	-	-	Mr Standard	-	-	-	-	-	-	-
	Concealed Closer	2	-	-	-	Mr Standard	-	-	-	-	-	-	-
HW-2	Function: Passage F75. Outside and Inside levers always unlocked.												
	Butt Hinges	3	-	-	-	US 26D (626)	-	-	-	-	-	-	-
	Cylindrical Latchset	1	-	-	-	7U15-B Lever	US 26D (626)	-	-	-	-	-	-
	Surface Mounted Closer	1	-	-	-	1431-O-26D	US 26D (626)	-	-	-	-	-	Pull Side Mounting
HW-3	ANSI Function: ADA Privacy Lock (F76). Both levers locked or unlocked by push button inside. Outside unlocked by coin or screwdriver. Turning inside lever releases lock.												
	Cylindrical Latchset	1	-	-	-	-	26D	-	-	-	-	-	-
	Surface Closer	1	-	-	-	-	Aluminum	-	-	-	-	-	Mounted on Room Side of Door
	4" Ball Bearing Butt Hinges	3	-	-	-	-	26D	-	-	-	-	-	-
HW-4	ANSI Function: Storeroom Lock (F86). Outside lever fixed. Entrance by key only. Inside lever always unlocked.												
	Cylindrical Latchset	1	-	-	-	Sargent	7 Series	26D	-	-	-	-	-
	4" Ball Bearing Butt Hinges	3	-	-	-	-	-	26D	-	-	-	-	-
	Surface Closer	1	-	-	-	-	-	Aluminum	-	-	-	-	Mounted on Room Side of Door

NOTE: Provide new exit devices at existing entry and exit doors as indicated on plans.



FLOOR PLAN
SCALE: 1/4" = 1'-0"

BCA BRENT CAMPBELL
BREITENBERG ARCHITECT PLLC
53080
10419
6/13/17

NOTICE: THESE DRAWINGS ARE THE RESULT OF A LIMITED SERVICES AGREEMENT BETWEEN THE OWNER AND THE ARCHITECT. INFORMATION, DETAILS, AND SPECIFICATIONS, NOT INCLUDED IN THIS UNBUNDLED SET OF DRAWINGS SHALL BE THE RESPONSIBILITY OF OTHERS. IT SHALL BE THE RESPONSIBILITY OF OTHERS TO INTERPRET THESE DRAWINGS AND COORDINATE THE DRAWINGS WITH THE WORK. FURTHER, IT SHALL BE THE RESPONSIBILITY OF OTHERS TO OBSERVE THE WORK TO DISCOVER, CORRECT AND/OR MITIGATE ERRORS, INCONSISTENCIES, OR OMISSIONS IN BOTH THE WORK, AND IN THE DRAWINGS. USE OF THESE DRAWINGS WITHOUT THE PARTICIPATION BY THE ARCHITECT AND ITS CONSULTANTS THROUGHOUT THE CONSTRUCTION PHASE OF THE PROJECT SHALL INDEMNIFY THE ARCHITECT AND ITS CONSULTANTS AGAINST LIABILITY RESULTING FROM ERRORS, INCONSISTENCIES, OR OMISSIONS IN BOTH THE WORK, AND IN THE DRAWINGS.

FOR PERMIT

PROJECT NAME:

MADabolic, Inc.
150 COXE AVE
ASHEVILLE, NC
28801

OWNER:

Jamie Nakamura

MARK	DATE	ISSUE
	04/13/2017	PERMIT

PROJECT NO: 1645
MODEL FILE:
DRAWN BY: BCA
CHK'D BY:

SHEET TITLE

FLOOR PLAN

DATE: 4/13/17 ©2017

A-101