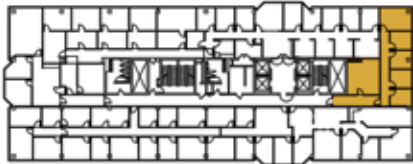




**301
NORTH
ELM**

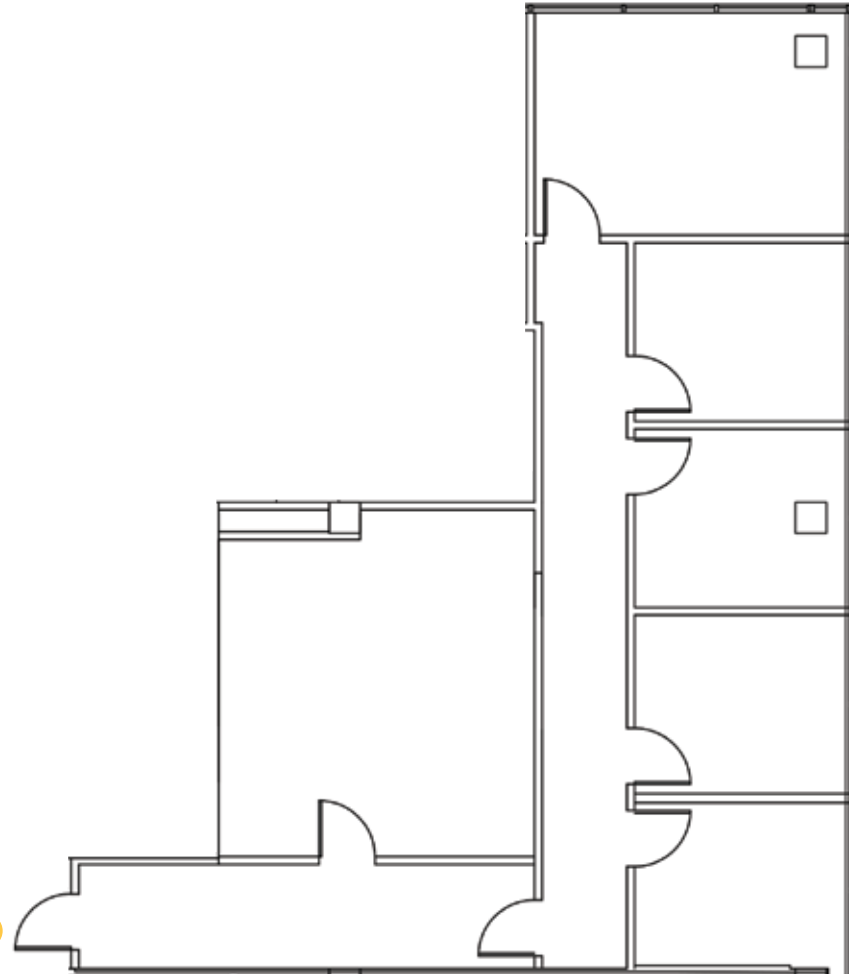
**Suite 205
1,544 RSF**



Site Key

Note: Drawing not to scale

Primary Entrance



Richard Mossman

Richard.Mossman@cbre.com | +1 336 499 9956

Jackson Williams

Jackson.Williams@cbre.com | +1 336 714 0384



CBRE

CBRE | CentrePort III | 101 Centreport Drive, Suite 160, Greensboro, NC 27409

© 2025 CBRE, Inc. The information contained in this document has been obtained from sources believed reliable. While CBRE, Inc. does not doubt its accuracy, CBRE, Inc. has not verified it and makes no guarantee, warranty or representation about it. It is your responsibility to independently confirm its accuracy and completeness. Any projections, opinions, assumptions or estimates used are for example only and do not represent the current or future performance of the property. The value of this transaction to you depends on tax and other factors which should be evaluated by your tax, financial and legal advisors. You and your advisors should conduct a careful, independent investigation of the property to determine to your satisfaction the suitability of the property for your needs. Photos herein are the property of their respective owners and use of these images without the express written consent of the owner is prohibited.



301
NORTH
ELM

Suite 238
1,208 RSF



Site Key

Note: Drawing not to scale



Primary Entrance



Richard Mossman

Richard.Mossman@cbre.com | +1 336 499 9956

Jackson Williams

Jackson.Williams@cbre.com | +1 336 714 0384



CBRE

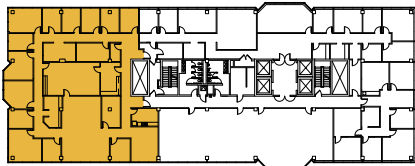
CBRE | CentrePort III | 101 Centreport Drive, Suite 160, Greensboro, NC 27409

© 2025 CBRE, Inc. The information contained in this document has been obtained from sources believed reliable. While CBRE, Inc. does not doubt its accuracy, CBRE, Inc. has not verified it and makes no guarantee, warranty or representation about it. It is your responsibility to independently confirm its accuracy and completeness. Any projections, opinions, assumptions or estimates used are for example only and do not represent the current or future performance of the property. The value of this transaction to you depends on tax and other factors which should be evaluated by your tax, financial and legal advisors. You and your advisors should conduct a careful, independent investigation of the property to determine to your satisfaction the suitability of the property for your needs. Photos herein are the property of their respective owners and use of these images without the express written consent of the owner is prohibited.



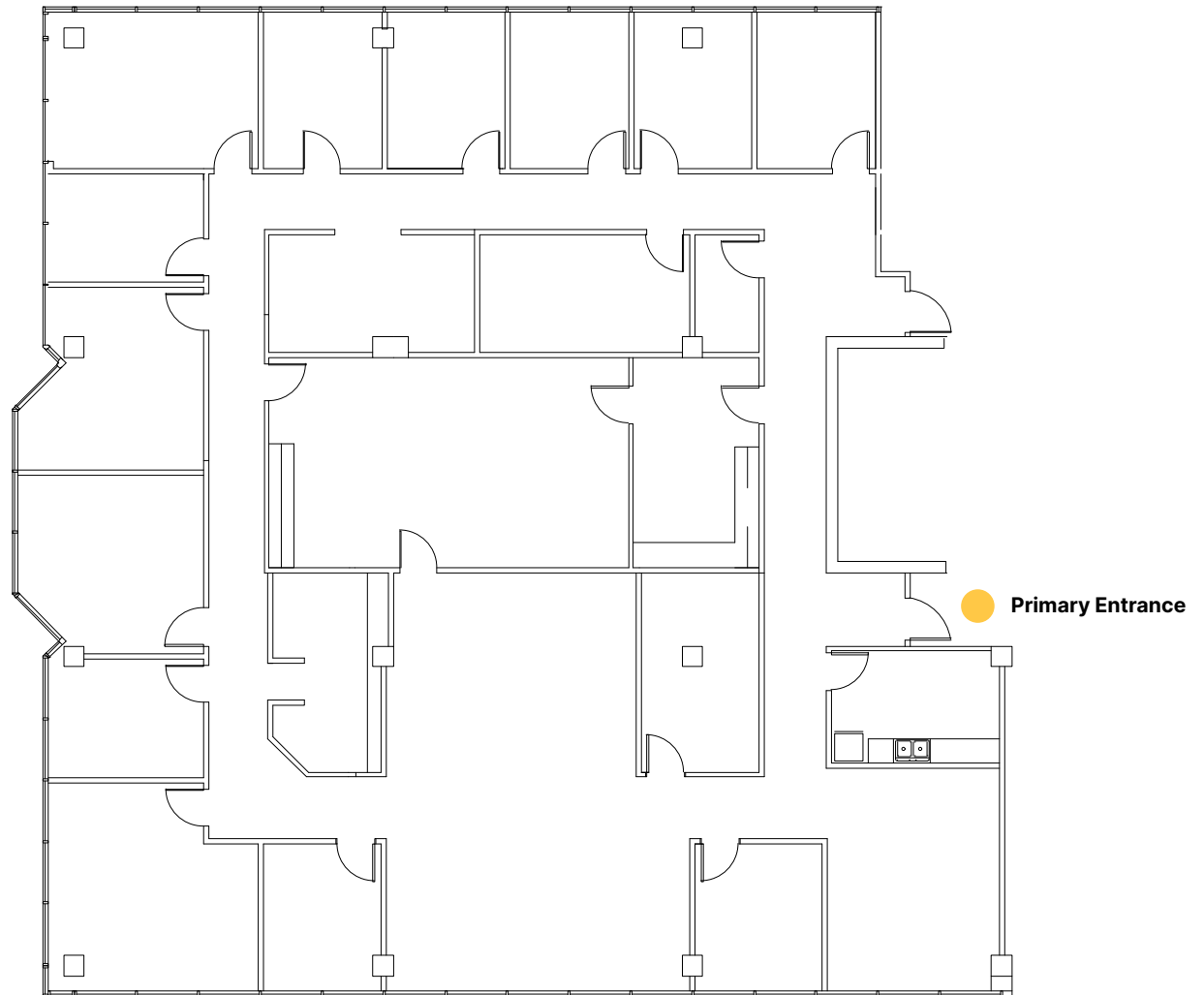
**301
NORTH
ELM**

Suite 300
6,442 RSF



Site Key

Note: Drawing not to scale



Richard Mossman

Richard.Mossman@cbre.com | +1 336 499 9956

Jackson Williams

Jackson.Williams@cbre.com | +1 336 714 0384



CBRE

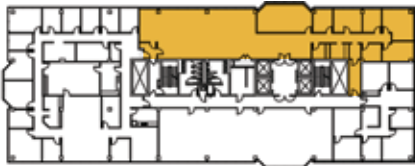
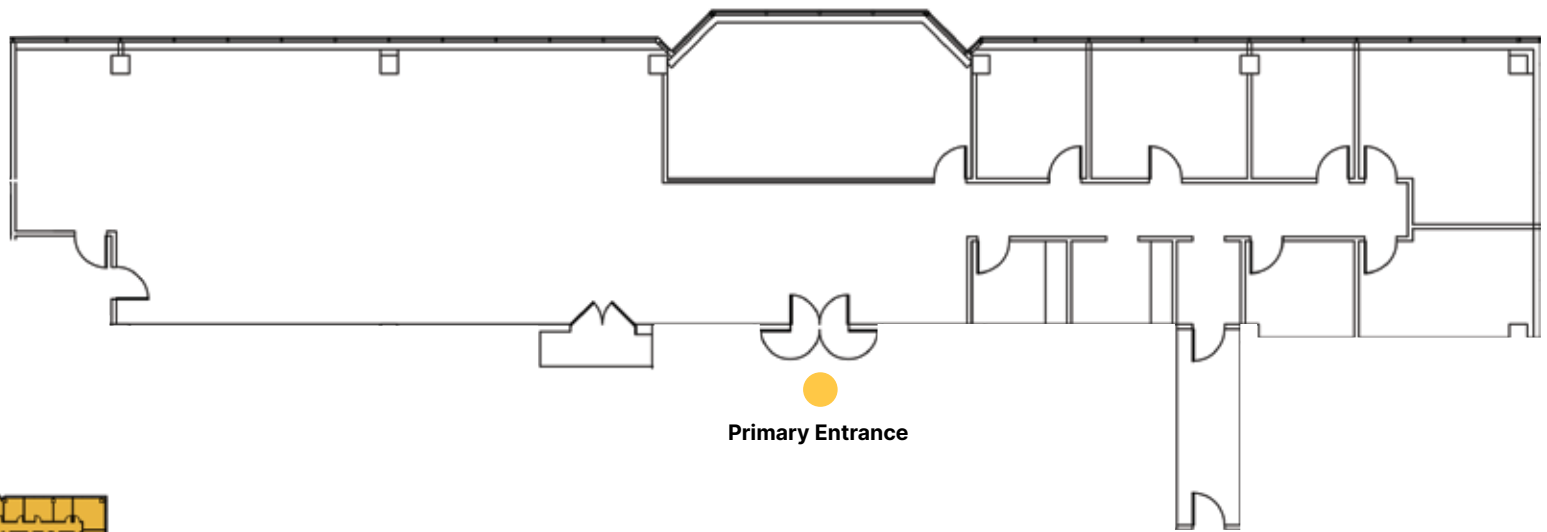
CBRE | CentrePort III | 101 Centreport Drive, Suite 160, Greensboro, NC 27409

© 2025 CBRE, Inc. The information contained in this document has been obtained from sources believed reliable. While CBRE, Inc. does not doubt its accuracy, CBRE, Inc. has not verified it and makes no guarantee, warranty or representation about it. It is your responsibility to independently confirm its accuracy and completeness. Any projections, opinions, assumptions or estimates used are for example only and do not represent the current or future performance of the property. The value of this transaction to you depends on tax and other factors which should be evaluated by your tax, financial and legal advisors. You and your advisors should conduct a careful, independent investigation of the property to determine to your satisfaction the suitability of the property for your needs. Photos herein are the property of their respective owners and use of these images without the express written consent of the owner is prohibited.



**301
NORTH
ELM**

**Suite 303
4,531 RSF**



Site Key

Note: Drawing not to scale

Richard Mossman

Richard.Mossman@cbre.com | +1 336 499 9956

Jackson Williams

Jackson.Williams@cbre.com | +1 336 714 0384



CBRE

CBRE | CentrePort III | 101 Centreport Drive, Suite 160, Greensboro, NC 27409

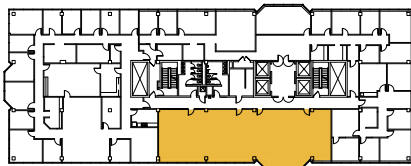
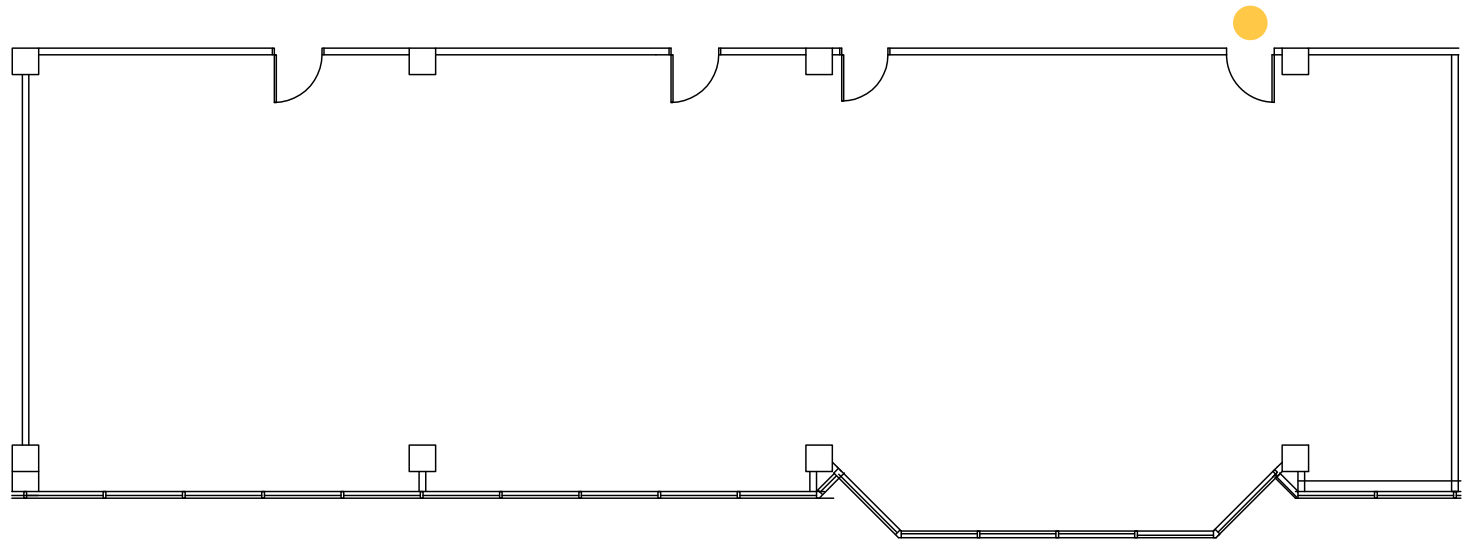
© 2025 CBRE, Inc. The information contained in this document has been obtained from sources believed reliable. While CBRE, Inc. does not doubt its accuracy, CBRE, Inc. has not verified it and makes no guarantee, warranty or representation about it. It is your responsibility to independently confirm its accuracy and completeness. Any projections, opinions, assumptions or estimates used are for example only and do not represent the current or future performance of the property. The value of this transaction to you depends on tax and other factors which should be evaluated by your tax, financial and legal advisors. You and your advisors should conduct a careful, independent investigation of the property to determine to your satisfaction the suitability of the property for your needs. Photos herein are the property of their respective owners and use of these images without the express written consent of the owner is prohibited.



**301
NORTH
ELM**

**Suite 308
2,950 RSF**

Primary Entrance



Site Key

Note: Drawing not to scale

Richard Mossman

Richard.Mossman@cbre.com | +1 336 499 9956

Jackson Williams

Jackson.Williams@cbre.com | +1 336 714 0384

CBRE | CentrePort III | 101 Centreport Drive, Suite 160, Greensboro, NC 27409

© 2025 CBRE, Inc. The information contained in this document has been obtained from sources believed reliable. While CBRE, Inc. does not doubt its accuracy, CBRE, Inc. has not verified it and makes no guarantee, warranty or representation about it. It is your responsibility to independently confirm its accuracy and completeness. Any projections, opinions, assumptions or estimates used are for example only and do not represent the current or future performance of the property. The value of this transaction to you depends on tax and other factors which should be evaluated by your tax, financial and legal advisors. You and your advisors should conduct a careful, independent investigation of the property to determine to your satisfaction the suitability of the property for your needs. Photos herein are the property of their respective owners and use of these images without the express written consent of the owner is prohibited.



CBRE



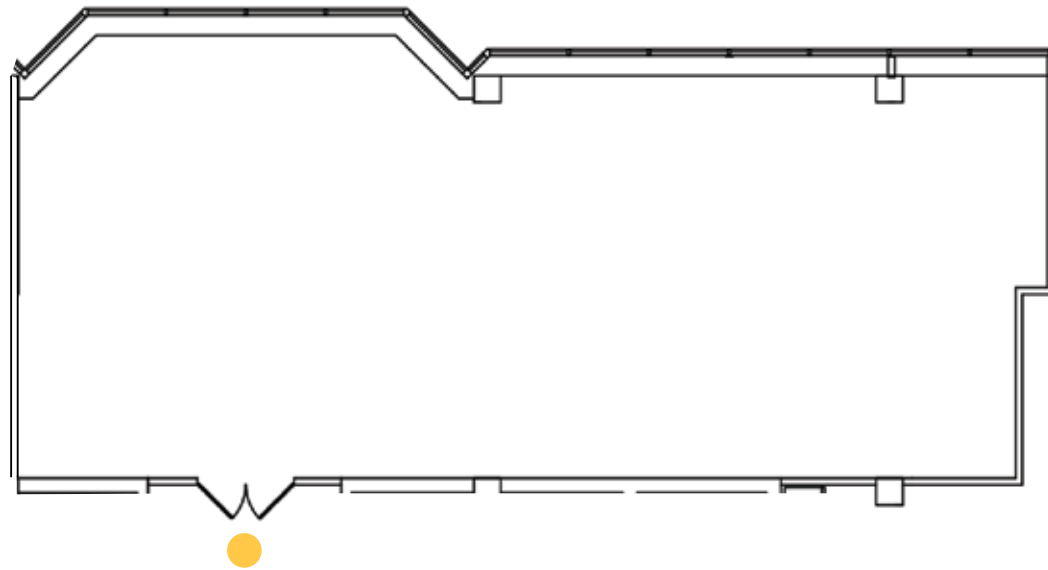
301
NORTH
ELM

Suite 426
1,936 RSF



Site Key

Note: Drawing not to scale



Primary Entrance

Richard Mossman

Richard.Mossman@cbre.com | +1 336 499 9956

Jackson Williams

Jackson.Williams@cbre.com | +1 336 714 0384



CBRE

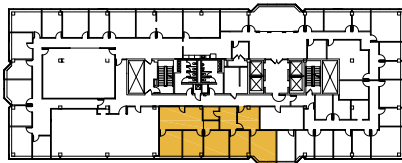
CBRE | CentrePort III | 101 Centreport Drive, Suite 160, Greensboro, NC 27409

© 2025 CBRE, Inc. The information contained in this document has been obtained from sources believed reliable. While CBRE, Inc. does not doubt its accuracy, CBRE, Inc. has not verified it and makes no guarantee, warranty or representation about it. It is your responsibility to independently confirm its accuracy and completeness. Any projections, opinions, assumptions or estimates used are for example only and do not represent the current or future performance of the property. The value of this transaction to you depends on tax and other factors which should be evaluated by your tax, financial and legal advisors. You and your advisors should conduct a careful, independent investigation of the property to determine to your satisfaction the suitability of the property for your needs. Photos herein are the property of their respective owners and use of these images without the express written consent of the owner is prohibited.



**301
NORTH
ELM**

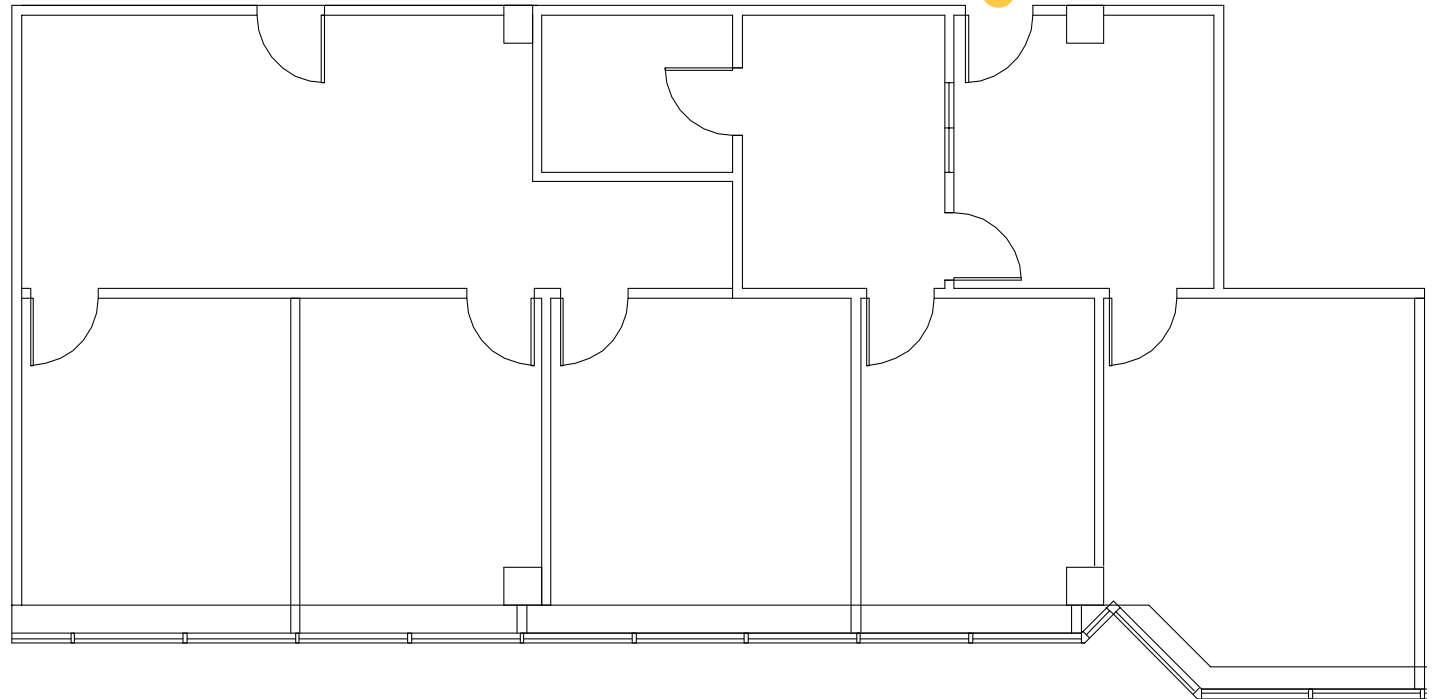
Suite 520
1,907 RSF



Site Key

Note: Drawing not to scale

Primary Entrance



Richard Mossman

Richard.Mossman@cbre.com | +1 336 499 9956

Jackson Williams

Jackson.Williams@cbre.com | +1 336 714 0384

CBRE | CentrePort III | 101 Centreport Drive, Suite 160, Greensboro, NC 27409

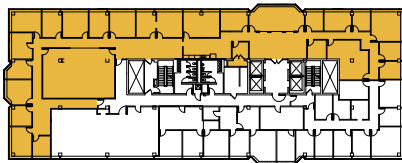
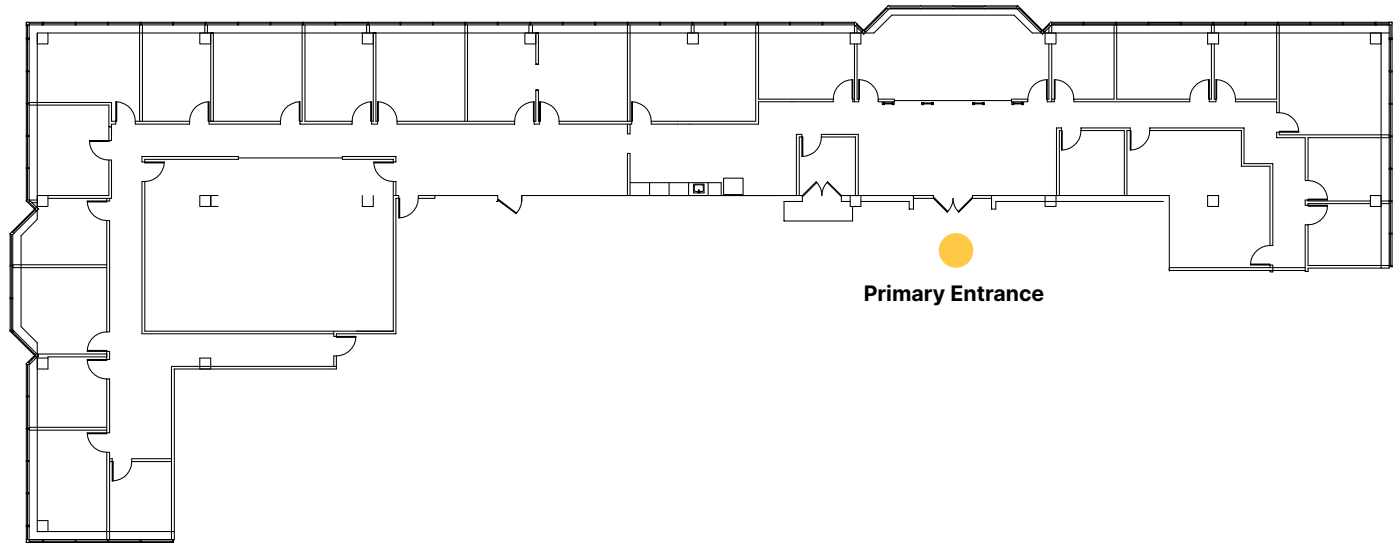
© 2025 CBRE, Inc. The information contained in this document has been obtained from sources believed reliable. While CBRE, Inc. does not doubt its accuracy, CBRE, Inc. has not verified it and makes no guarantee, warranty or representation about it. It is your responsibility to independently confirm its accuracy and completeness. Any projections, opinions, assumptions or estimates used are for example only and do not represent the current or future performance of the property. The value of this transaction to you depends on tax and other factors which should be evaluated by your tax, financial and legal advisors. You and your advisors should conduct a careful, independent investigation of the property to determine to your satisfaction the suitability of the property for your needs. Photos herein are the property of their respective owners and use of these images without the express written consent of the owner is prohibited.





301
NORTH
ELM

Suite 550
9,234 RSF



Site Key

Note: Drawing not to scale

Richard Mossman

Richard.Mossman@cbre.com | +1 336 499 9956

Jackson Williams

Jackson.Williams@cbre.com | +1 336 714 0384

CBRE | CentrePort III | 101 Centreport Drive, Suite 160, Greensboro, NC 27409

© 2025 CBRE, Inc. The information contained in this document has been obtained from sources believed reliable. While CBRE, Inc. does not doubt its accuracy, CBRE, Inc. has not verified it and makes no guarantee, warranty or representation about it. It is your responsibility to independently confirm its accuracy and completeness. Any projections, opinions, assumptions or estimates used are for example only and do not represent the current or future performance of the property. The value of this transaction to you depends on tax and other factors which should be evaluated by your tax, financial and legal advisors. You and your advisors should conduct a careful, independent investigation of the property to determine to your satisfaction the suitability of the property for your needs. Photos herein are the property of their respective owners and use of these images without the express written consent of the owner is prohibited.

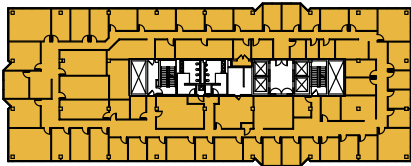
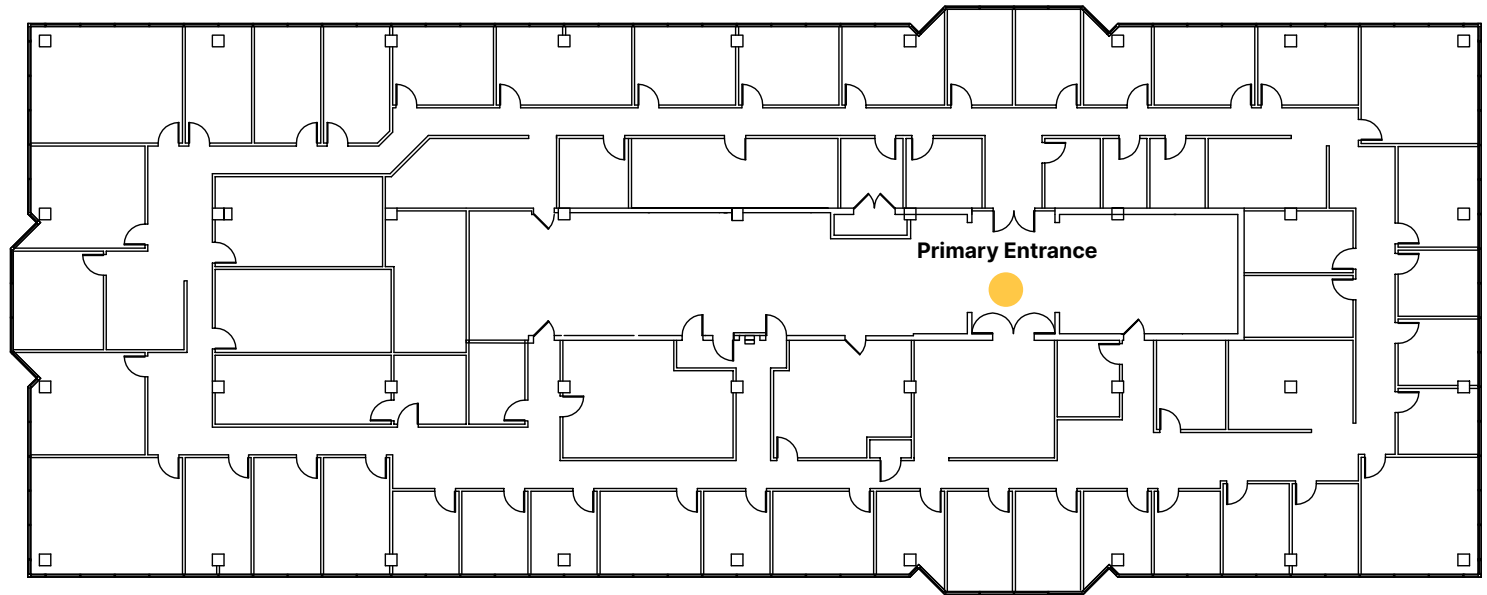


CBRE



**301
NORTH
ELM**

Suite 600
16,787 RSF



Site Key

Note: Drawing not to scale

Richard Mossman

Richard.Mossman@cbre.com | +1 336 499 9956

Jackson Williams

Jackson.Williams@cbre.com | +1 336 714 0384

CBRE | CentrePort III | 101 Centreport Drive, Suite 160, Greensboro, NC 27409

© 2025 CBRE, Inc. The information contained in this document has been obtained from sources believed reliable. While CBRE, Inc. does not doubt its accuracy, CBRE, Inc. has not verified it and makes no guarantee, warranty or representation about it. It is your responsibility to independently confirm its accuracy and completeness. Any projections, opinions, assumptions or estimates used are for example only and do not represent the current or future performance of the property. The value of this transaction to you depends on tax and other factors which should be evaluated by your tax, financial and legal advisors. You and your advisors should conduct a careful, independent investigation of the property to determine to your satisfaction the suitability of the property for your needs. Photos herein are the property of their respective owners and use of these images without the express written consent of the owner is prohibited.

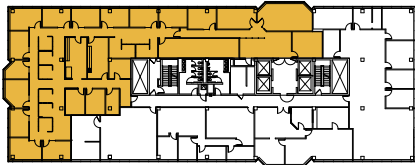
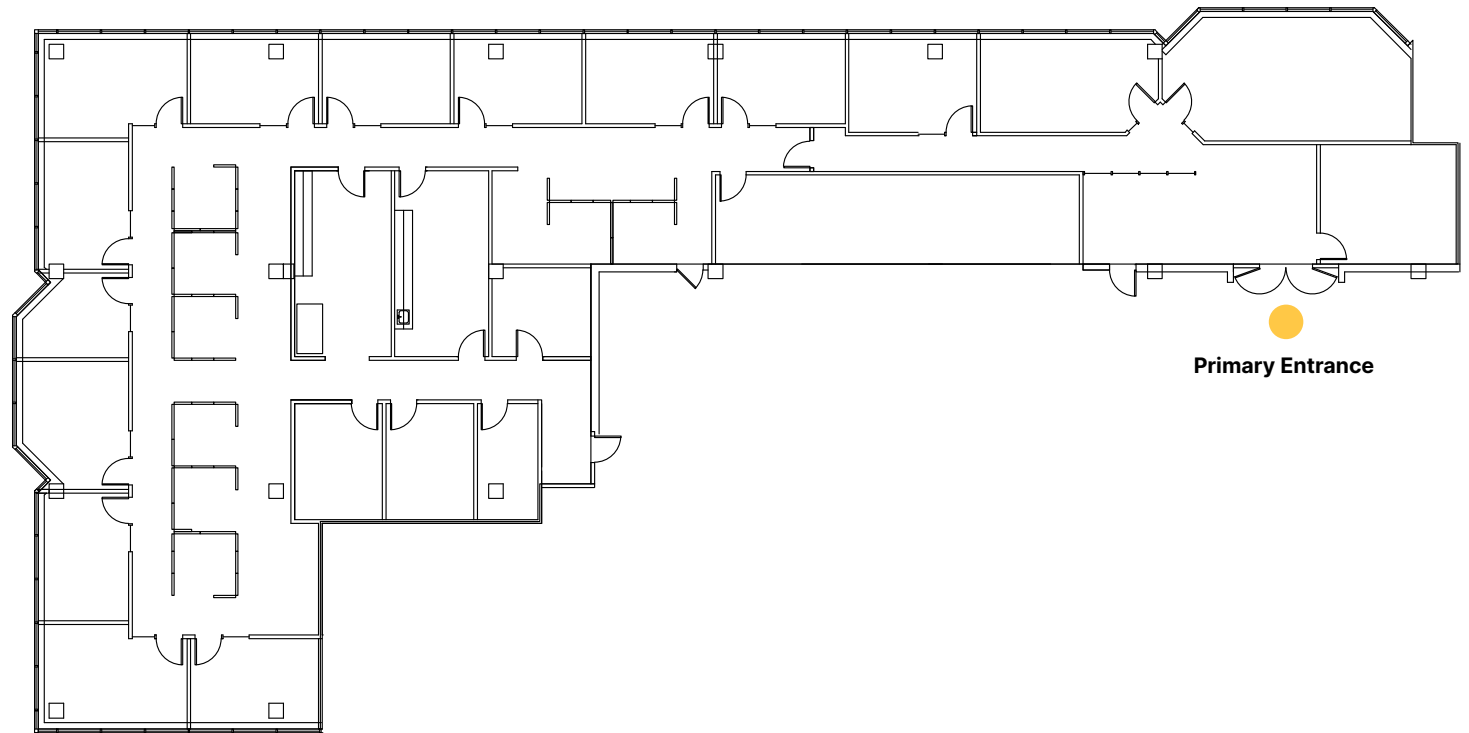


CBRE



**301
NORTH
ELM**

Suite 700
7,872 RSF



Site Key

Note: Drawing not to scale

Richard Mossman

Richard.Mossman@cbre.com | +1 336 499 9956

Jackson Williams

Jackson.Williams@cbre.com | +1 336 714 0384

CBRE | CentrePort III | 101 Centreport Drive, Suite 160, Greensboro, NC 27409

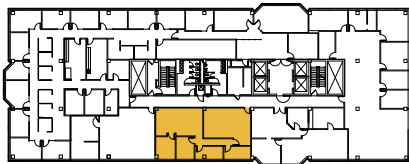
© 2025 CBRE, Inc. The information contained in this document has been obtained from sources believed reliable. While CBRE, Inc. does not doubt its accuracy, CBRE, Inc. has not verified it and makes no guarantee, warranty or representation about it. It is your responsibility to independently confirm its accuracy and completeness. Any projections, opinions, assumptions or estimates used are for example only and do not represent the current or future performance of the property. The value of this transaction to you depends on tax and other factors which should be evaluated by your tax, financial and legal advisors. You and your advisors should conduct a careful, independent investigation of the property to determine to your satisfaction the suitability of the property for your needs. Photos herein are the property of their respective owners and use of these images without the express written consent of the owner is prohibited.





**301
NORTH
ELM**

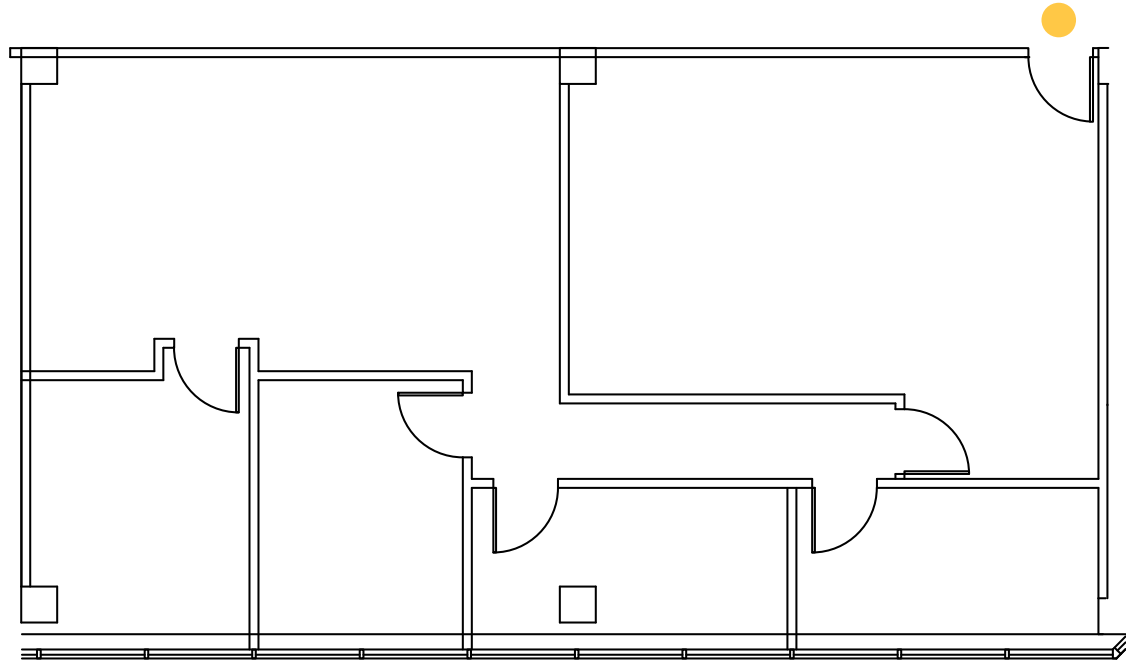
**Suite 701
1,603 RSF**



Site Key

Note: Drawing not to scale

Primary Entrance



Richard Mossman

Richard.Mossman@cbre.com | +1 336 499 9956

Jackson Williams

Jackson.Williams@cbre.com | +1 336 714 0384



CBRE

CBRE | CentrePort III | 101 Centreport Drive, Suite 160, Greensboro, NC 27409

© 2025 CBRE, Inc. The information contained in this document has been obtained from sources believed reliable. While CBRE, Inc. does not doubt its accuracy, CBRE, Inc. has not verified it and makes no guarantee, warranty or representation about it. It is your responsibility to independently confirm its accuracy and completeness. Any projections, opinions, assumptions or estimates used are for example only and do not represent the current or future performance of the property. The value of this transaction to you depends on tax and other factors which should be evaluated by your tax, financial and legal advisors. You and your advisors should conduct a careful, independent investigation of the property to determine to your satisfaction the suitability of the property for your needs. Photos herein are the property of their respective owners and use of these images without the express written consent of the owner is prohibited.



301
NORTH
ELM

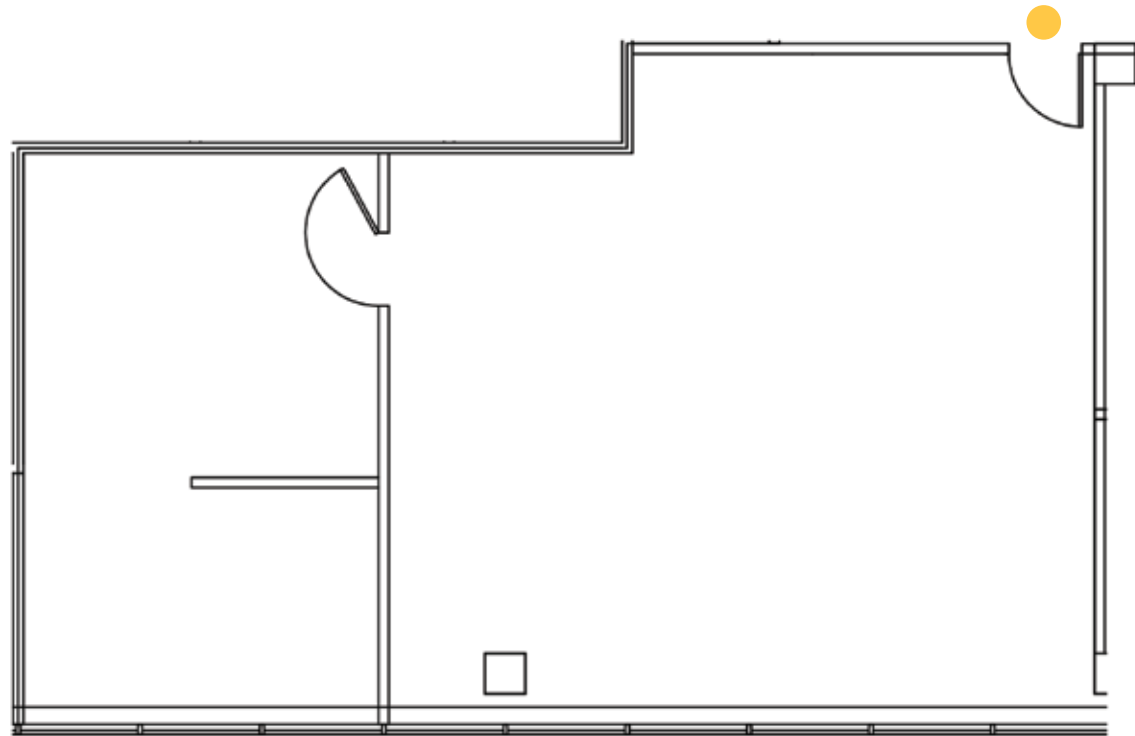
Suite 702
1,302 RSF



Site Key

Note: Drawing not to scale

Primary Entrance



Richard Mossman

Richard.Mossman@cbre.com | +1 336 499 9956

Jackson Williams

Jackson.Williams@cbre.com | +1 336 714 0384



CBRE

CBRE | CentrePort III | 101 Centreport Drive, Suite 160, Greensboro, NC 27409

© 2025 CBRE, Inc. The information contained in this document has been obtained from sources believed reliable. While CBRE, Inc. does not doubt its accuracy, CBRE, Inc. has not verified it and makes no guarantee, warranty or representation about it. It is your responsibility to independently confirm its accuracy and completeness. Any projections, opinions, assumptions or estimates used are for example only and do not represent the current or future performance of the property. The value of this transaction to you depends on tax and other factors which should be evaluated by your tax, financial and legal advisors. You and your advisors should conduct a careful, independent investigation of the property to determine to your satisfaction the suitability of the property for your needs. Photos herein are the property of their respective owners and use of these images without the express written consent of the owner is prohibited.



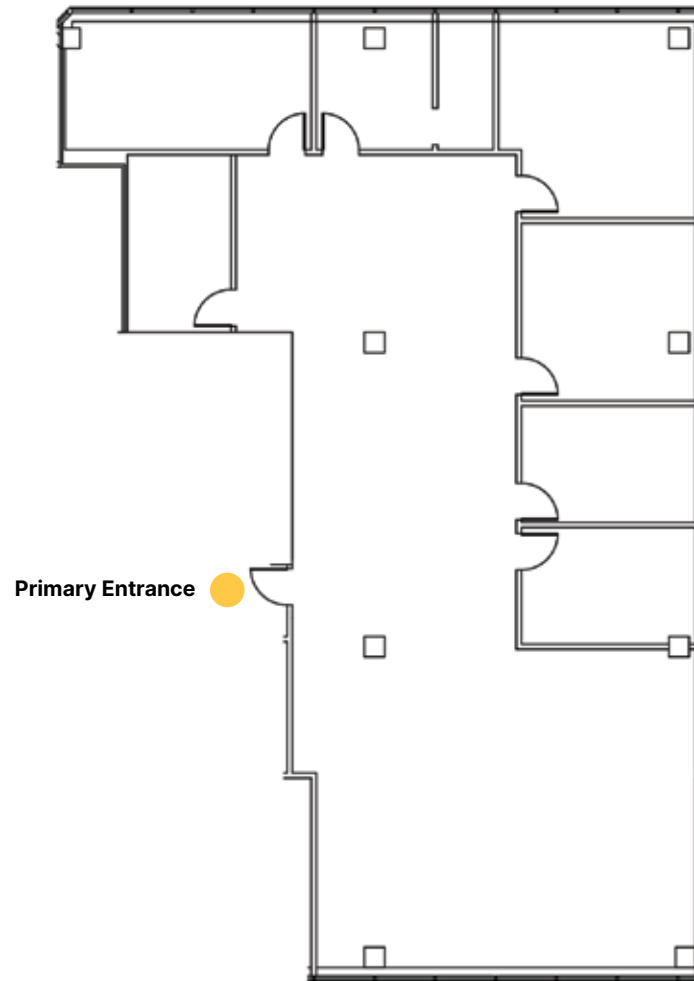
301
NORTH
ELM

Suite 707
3,541 RSF



Site Key

Note: Drawing not to scale



Primary Entrance

Richard Mossman

Richard.Mossman@cbre.com | +1 336 499 9956

Jackson Williams

Jackson.Williams@cbre.com | +1 336 714 0384



CBRE

CBRE | CentrePort III | 101 Centreport Drive, Suite 160, Greensboro, NC 27409

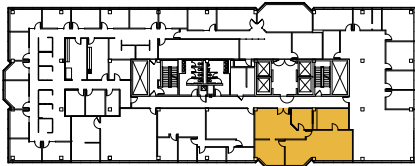
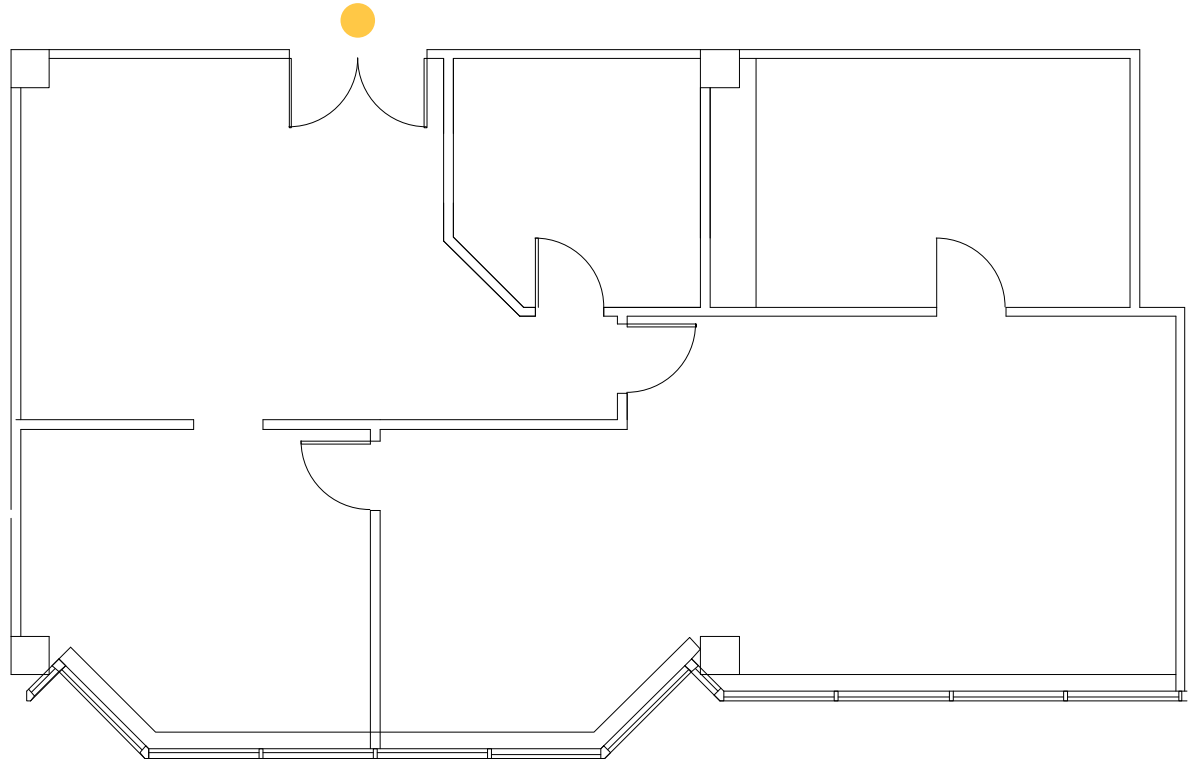
© 2025 CBRE, Inc. The information contained in this document has been obtained from sources believed reliable. While CBRE, Inc. does not doubt its accuracy, CBRE, Inc. has not verified it and makes no guarantee, warranty or representation about it. It is your responsibility to independently confirm its accuracy and completeness. Any projections, opinions, assumptions or estimates used are for example only and do not represent the current or future performance of the property. The value of this transaction to you depends on tax and other factors which should be evaluated by your tax, financial and legal advisors. You and your advisors should conduct a careful, independent investigation of the property to determine to your satisfaction the suitability of the property for your needs. Photos herein are the property of their respective owners and use of these images without the express written consent of the owner is prohibited.



**301
NORTH
ELM**

Suite 710
1,658 RSF

Primary Entrance



Site Key

Note: Drawing not to scale

Richard Mossman

Richard.Mossman@cbre.com | +1 336 499 9956

Jackson Williams

Jackson.Williams@cbre.com | +1 336 714 0384



CBRE

CBRE | CentrePort III | 101 Centreport Drive, Suite 160, Greensboro, NC 27409

© 2025 CBRE, Inc. The information contained in this document has been obtained from sources believed reliable. While CBRE, Inc. does not doubt its accuracy, CBRE, Inc. has not verified it and makes no guarantee, warranty or representation about it. It is your responsibility to independently confirm its accuracy and completeness. Any projections, opinions, assumptions or estimates used are for example only and do not represent the current or future performance of the property. The value of this transaction to you depends on tax and other factors which should be evaluated by your tax, financial and legal advisors. You and your advisors should conduct a careful, independent investigation of the property to determine to your satisfaction the suitability of the property for your needs. Photos herein are the property of their respective owners and use of these images without the express written consent of the owner is prohibited.



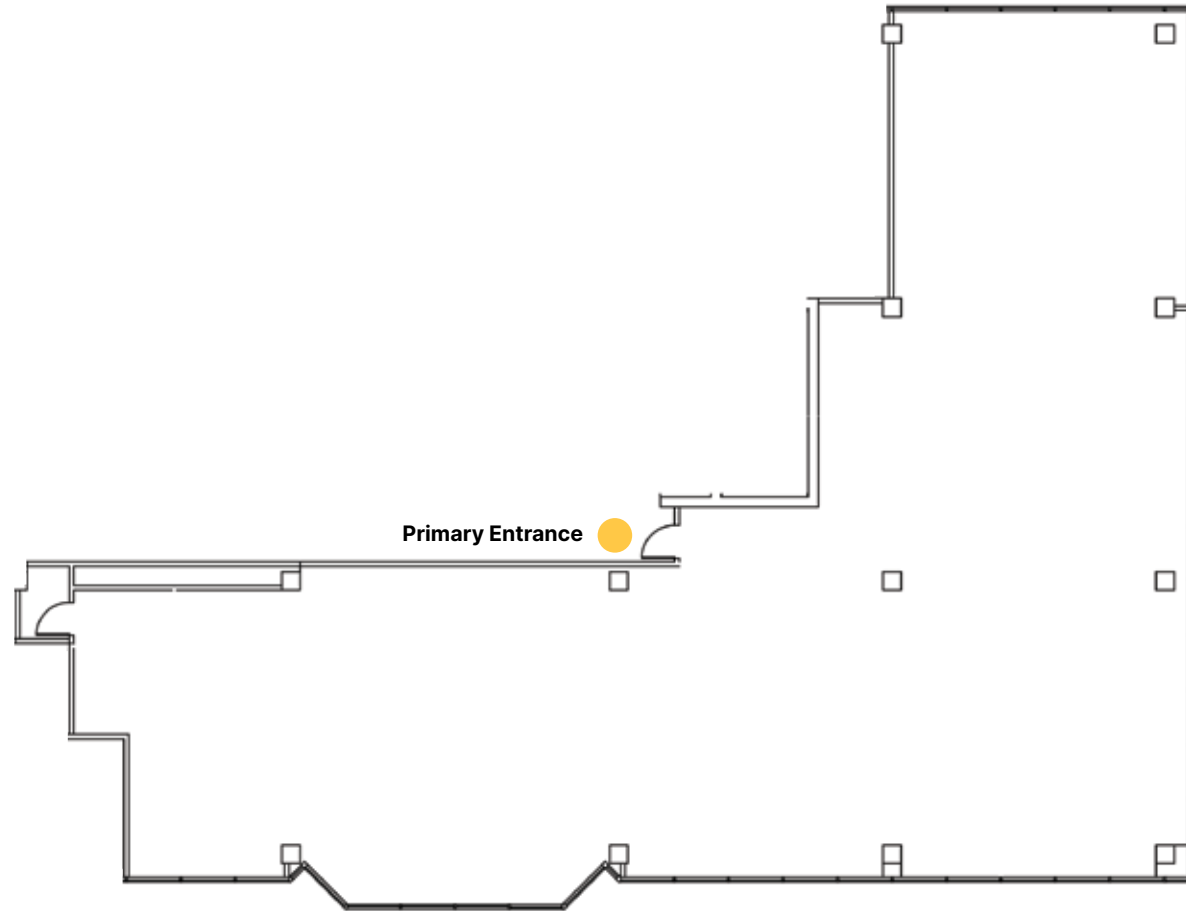
**301
NORTH
ELM**

Suite 800
5,211 RSF



Site Key

Note: Drawing not to scale



Richard Mossman
Richard.Mossman@cbre.com | +1 336 499 9956

Jackson Williams
Jackson.Williams@cbre.com | +1 336 714 0384



CBRE | CentrePort III | 101 Centreport Drive, Suite 160, Greensboro, NC 27409

© 2025 CBRE, Inc. The information contained in this document has been obtained from sources believed reliable. While CBRE, Inc. does not doubt its accuracy, CBRE, Inc. has not verified it and makes no guarantee, warranty or representation about it. It is your responsibility to independently confirm its accuracy and completeness. Any projections, opinions, assumptions or estimates used are for example only and do not represent the current or future performance of the property. The value of this transaction to you depends on tax and other factors which should be evaluated by your tax, financial and legal advisors. You and your advisors should conduct a careful, independent investigation of the property to determine to your satisfaction the suitability of the property for your needs. Photos herein are the property of their respective owners and use of these images without the express written consent of the owner is prohibited.