



Keegan & Coppin
COMPANY, INC.

FOR LEASE

100 & 102C WIKIUP DRIVE
SANTA ROSA, CA

WIKIUP BUSINESS PARK
OFFICE/RETAIL SPACE



Go beyond broker.

PRESENTED BY:

KEVIN DORAN, PARTNER
LIC # 01704987 (707) 528-1400
KDORAN@KEEGANCOPPIN.COM



PROPERTY SUMMARY



100 & 102C WIKIUP DRIVE
SANTA ROSA, CA

**OFFICE/RETAIL SPACE
FOR LEASE**

FEATURES

- Above-standard parking - 6:1,000
- Pleasant, comfortable setting with easy Highway 101 access
- Ideal for professional services, retail sales, medical suites, day spa, tanning salon, massage, yoga, esthetician
- Short term lease available

USER SPACE

Retail/Office

RENTABLE SPACE

Suite 100: 1,690+/- sq ft

Suite 102C: 300+/- sq ft

DESCRIPTION OF PREMISES - FEATURES

This office/quasi retail opportunity allows a user to have their own individual unique space. Ideal setting for professional services such as legal, medical, dental, consulting, and sales. The buildings complement the adjacent developments overlooking Mark West Creek.

DESCRIPTION OF LOCATION - AREA

Located in northeast Santa Rosa, at the intersection of Old Redwood Highway and Wikiup Drive in the Wikiup Professional Park. Easy access to central Santa Rosa, Sonoma County Airport area and Windsor.

LEASE RATE

SUITE 100: \$2,500/Month

SUITE 102C: \$550/Month



PRESENTED BY:

**KEVIN DORAN, PARTNER
KEEGAN & COPPIN CO., INC.
LIC # 01704987 (707) 528-1400, EXT 270
KDORAN@KEEGANCOPPIN.COM**

Keegan & Coppin Company, Inc.

The above information, while not guaranteed, has been secured from sources we believe to be reliable. Submitted subject to error, change or withdrawal. An interested party should verify the status of the property and the information herein.

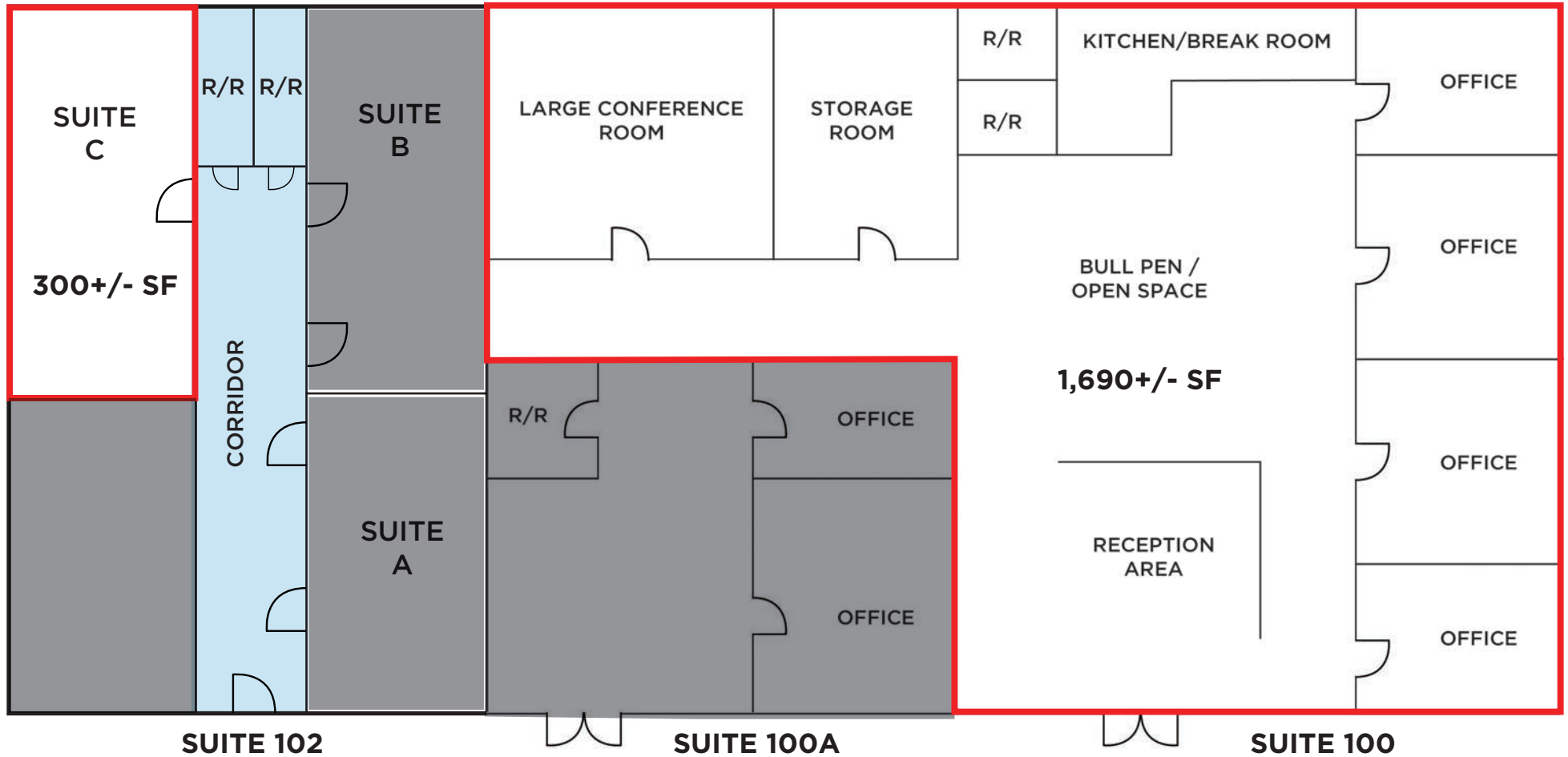


FLOOR PLAN



100 & 102C WIKIUP DRIVE
SANTA ROSA, CA

OFFICE/RETAIL SPACE
FOR LEASE



PRESENTED BY:

KEVIN DORAN, PARTNER
KEEGAN & COPPIN CO., INC.
LIC # 01704987 (707) 528-1400, EXT 270
KDORAN@KEEGANCOPPIN.COM

Keegan & Coppin Company, Inc.

The above information, while not guaranteed, has been secured from sources we believe to be reliable. Submitted subject to error, change or withdrawal. An interested party should verify the status of the property and the information herein.



PROPERTY PHOTOS



100 & 102C WIKIUP DRIVE
SANTA ROSA, CA

OFFICE/RETAIL SPACE
FOR LEASE



PRESENTED BY:

**KEVIN DORAN, PARTNER
KEEGAN & COPPIN CO., INC.
LIC # 01704987 (707) 528-1400, EXT 270
KDORAN@KEEGANCOPPIN.COM**

Keegan & Coppin Company, Inc.

The above information, while not guaranteed, has been secured from sources we believe to be reliable. Submitted subject to error, change or withdrawal. An interested party should verify the status of the property and the information herein.



PROPERTY PHOTOS



100 & 102C WIKIUP DRIVE
SANTA ROSA, CA

OFFICE/RETAIL SPACE
FOR LEASE



PRESENTED BY:

KEVIN DORAN, PARTNER
KEEGAN & COPPIN CO., INC.
LIC # 01704987 (707) 528-1400, EXT 270
KDORAN@KEEGANCOPPIN.COM

Keegan & Coppin Company, Inc.

The above information, while not guaranteed, has been secured from sources we believe to be reliable. Submitted subject to error, change or withdrawal. An interested party should verify the status of the property and the information herein.



PROPERTY PHOTOS



100 & 102C WIKIUP DRIVE
SANTA ROSA, CA

OFFICE/RETAIL SPACE
FOR LEASE



PRESENTED BY:

KEVIN DORAN, PARTNER
KEEGAN & COPPIN CO., INC.
LIC # 01704987 (707) 528-1400, EXT 270
KDORAN@KEEGANCOPPIN.COM

Keegan & Coppin Company, Inc.

The above information, while not guaranteed, has been secured from sources we believe to be reliable. Submitted subject to error, change or withdrawal. An interested party should verify the status of the property and the information herein.



PROPERTY PHOTOS



100 & 102C WIKIUP DRIVE
SANTA ROSA, CA

OFFICE/RETAIL SPACE
FOR LEASE



PRESENTED BY:

KEVIN DORAN, PARTNER
KEEGAN & COPPIN CO., INC.
LIC # 01704987 (707) 528-1400, EXT 270
KDORAN@KEEGANCOPPIN.COM

Keegan & Coppin Company, Inc.

The above information, while not guaranteed, has been secured from sources we believe to be reliable. Submitted subject to error, change or withdrawal. An interested party should verify the status of the property and the information herein.

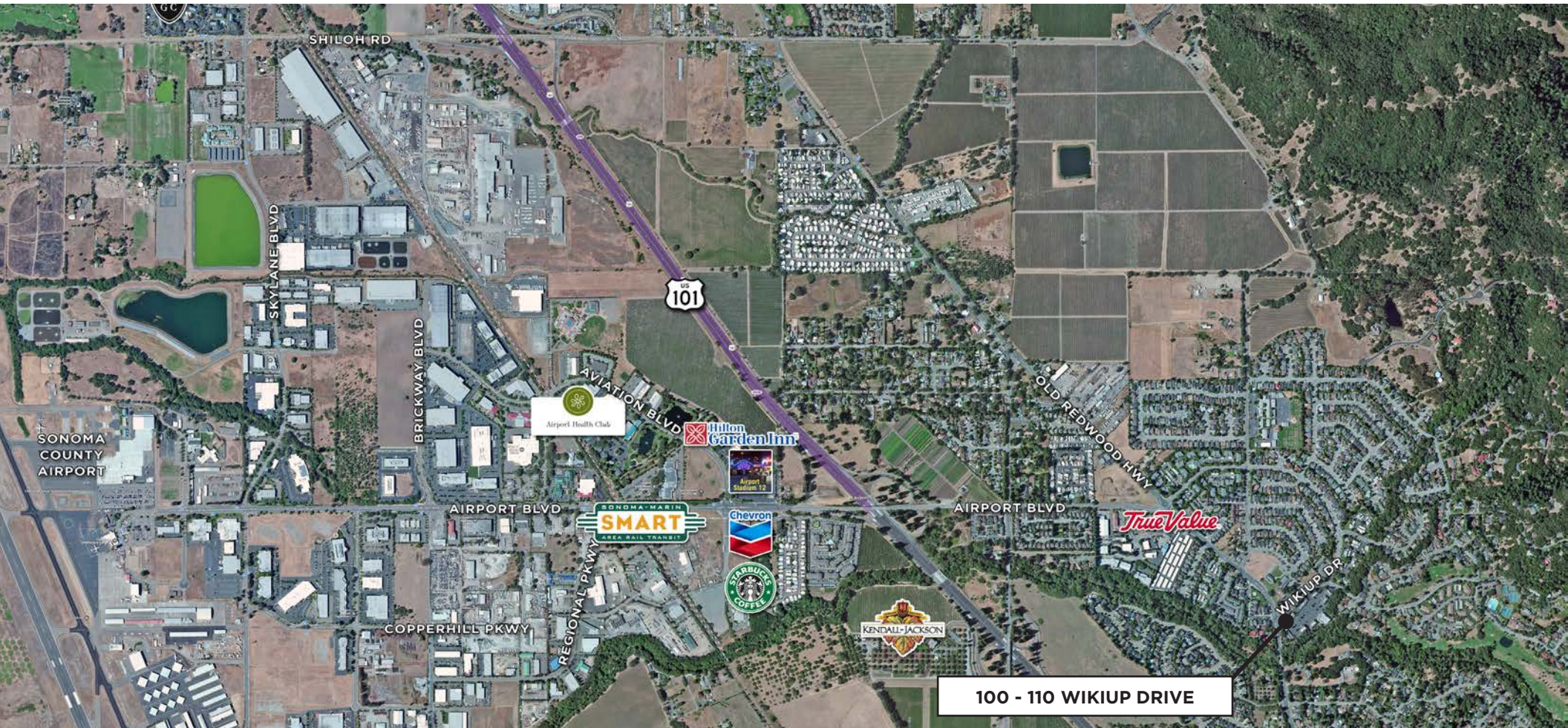


AERIAL MAP



100 & 102C WIKIUP DRIVE
SANTA ROSA, CA

**OFFICE/RETAIL SPACE
FOR LEASE**



100 - 110 WIKIUP DRIVE

Keegan & Coppin Co., Inc.
1355 N Dutton Ave.
Santa Rosa, CA 95401
www.keegancoppin.com
(707) 528-1400

The above information, while not guaranteed, has been secured from sources we believe to be reliable. Submitted subject to error, change or withdrawal. An interested party should verify the status of the property and the information herein.

PRESENTED BY:

KEVIN DORAN, PARTNER
LIC # 01704987 (707) 528-1400, EXT 270
KDORAN@KEEGANCOPPIN.COM