

3780 W Ridge Rd
Rochester, NY 14626

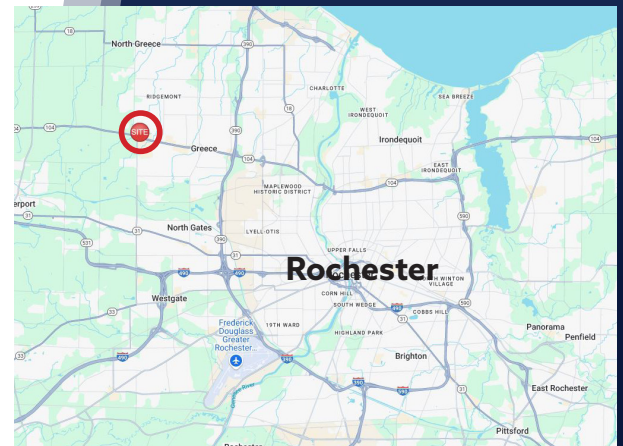


Highlights

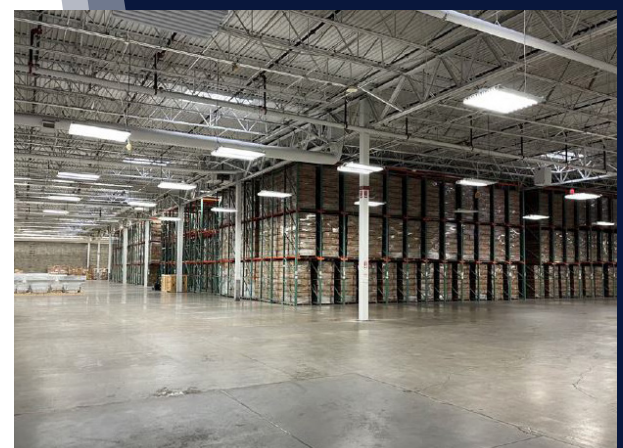
- Ideal Industrial Space
- Situated in the Trade Area's Primary Retail Corridor
- Offers Convenient Access from W Ridge Rd and N Greece Rd
- Anchored by Walmart, Taco Bell, and Nova Trampoline Park

Overview

This 131,408 sq. ft. industrial space in Greece offers prime location with high visibility, located off W Ridge Rd with 27,000 vehicles passing daily. Recently renovated in 2024/25, the space has roughly 8,000 SF of office. This location includes 30' Clear Ceiling Height, 5 Grade Doors and 6 Docks.



Demographics	3 Mile	5 Miles	10 Miles
Population	43,592	126,175	476,684
Households	19,170	54,832	205,541
Avg. HH Income	\$108,434	\$96,030	\$87,304



R. Scott Burdett CRRP
Associate Real Estate Broker
sburdett@flaummgt.com



585.546.4866 | 400 Andrews St Suite 500 Rochester, NY 14604 | www.flaummgt.com