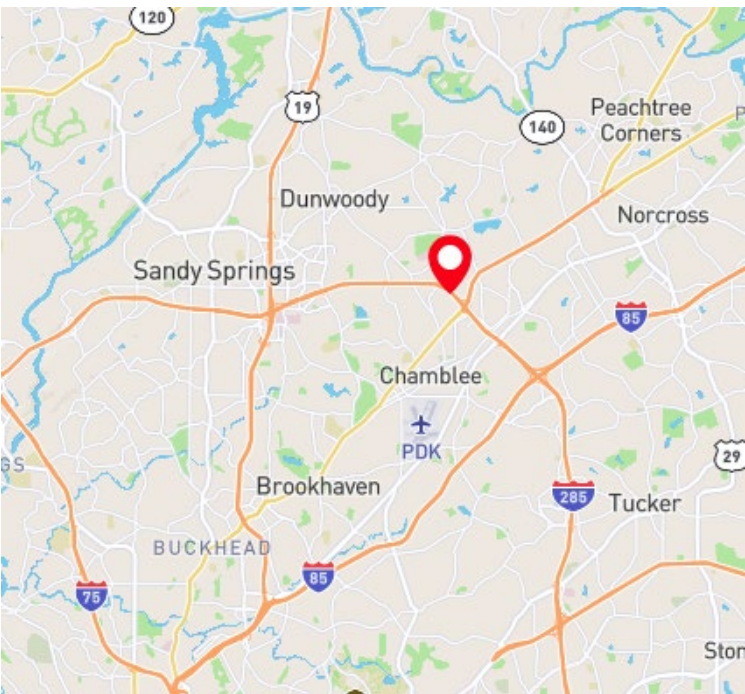




SCOTLAND WRIGHT ASSOCIATES

FOR SALE
Office/Warehouse Building
±8,500 SF

2306 PERIMETER PARK DR, ATLANTA, GA 30341



- ±8,500 USF Total
- 3,000 +/- SF 1st Floor Office Space
- 2,500 +/- SF 2nd Floor Mezzanine Office
- 3,000 +/- SF Warehouse
- ±.9 Acre
- 19' Average Clear Height
- 1 Drive In
- Fenced storage in Rear of Building
- Ample Parking

CONTACT

WILL GROGAN
404.797.4126

wgrogan@scotlandwright.com

BRADY POWELL
678.315.2576

brady@scotlandwright.com

LAND WRIGHT
404.668.8211

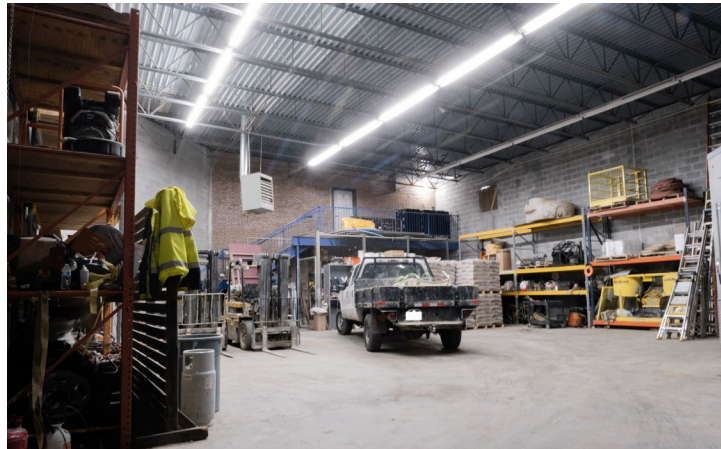
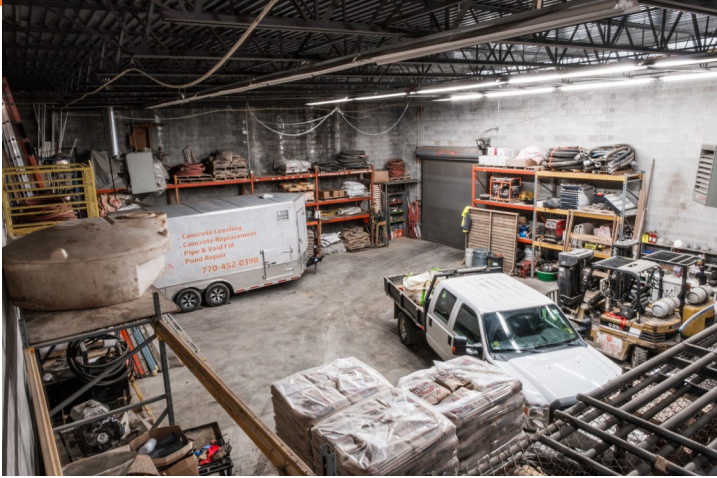
lwright@scotlandwright.com

SCOTLAND WRIGHT ASSOCIATES
1100 Peachtree Street NE,
Suite 1750 Atlanta, Georgia 30309

ALTHOUGH ALL INFORMATION FURNISHED REGARDING PROPERTY FOR SALE, RENTAL, OR FINANCING IS FROM SOURCES DEEMED RELIABLE, SUCH INFORMATION HAS NOT BEEN VERIFIED, AND NO EXPRESS REPRESENTATION IS MADE NOR IS ANY TO BE IMPLIED AS TO THE ACCURACY THEREOF, AND IT IS SUBMITTED SUBJECT TO ERRORS, OMISSIONS, CHANGE OF PRICE, RENTAL OR OTHER CONDITIONS, PRIOR SALE, LEASE OR FINANCING, OR WITHDRAWAL WITHOUT NOTICE.

FOR SALE
Office/Warehouse Building
±8,500 SF

2306 PERIMETER PARK DR, ATLANTA, GA 30341



CONTACT

WILL GROGAN
404.797.4126
wgrogan@scotlandwright.com

BRADY POWELL
678.315.2576
brady@scotlandwright.com

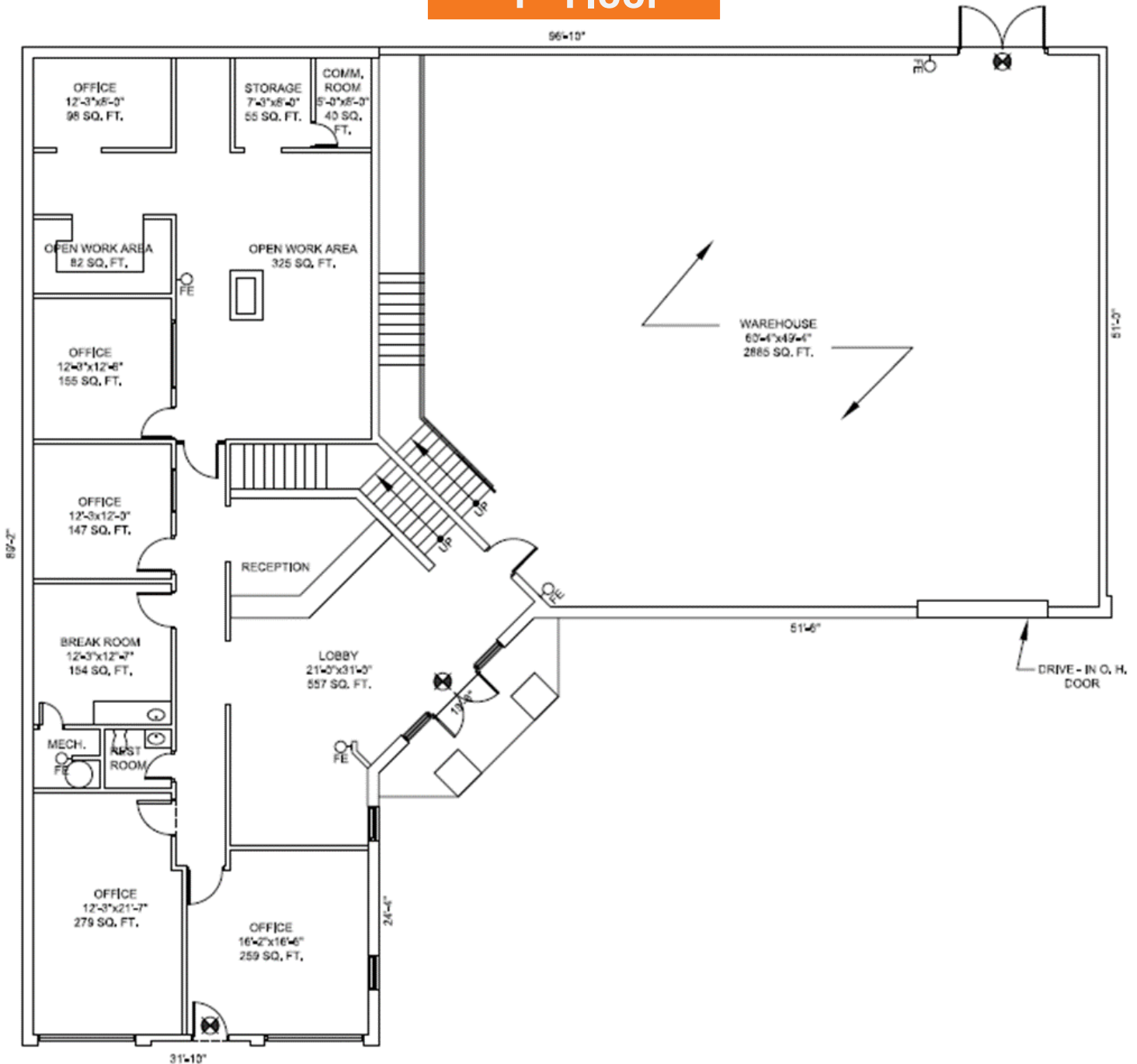
LAND WRIGHT
404.668.8211
lwright@scotlandwright.com

SCOTLAND WRIGHT ASSOCIATES
1100 Peachtree Street NE,
Suite 1750 Atlanta, Georgia 30309

ALTHOUGH ALL INFORMATION FURNISHED REGARDING PROPERTY FOR SALE, RENTAL, OR FINANCING IS FROM SOURCES DEEMED RELIABLE, SUCH INFORMATION HAS NOT BEEN VERIFIED, AND NO EXPRESS REPRESENTATION IS MADE NOR IS ANY TO BE IMPLIED AS TO THE ACCURACY THEREOF, AND IT IS SUBMITTED SUBJECT TO ERRORS, OMISSIONS, CHANGE OF PRICE, RENTAL OR OTHER CONDITIONS, PRIOR SALE, LEASE OR FINANCING, OR WITHDRAWAL WITHOUT NOTICE.

2306 PERIMETER PARK DR, ATLANTA, GA 30341

1st Floor



CONTACT

WILL GROGAN
 404.797.4126
 wgrogan@scotlandwright.com

BRADY POWELL
 678.315.2576
 brady@scotlandwright.com

LAND WRIGHT
 404.668.8211
 lwright@scotlandwright.com

SCOTLAND WRIGHT ASSOCIATES
 1100 Peachtree Street NE,
 Suite 1750 Atlanta, Georgia 30309

2306 PERIMETER PARK DR, ATLANTA, GA 30341

2nd Floor

