



FOR LEASE | MEDICAL SPACE

MIDLANDS TWO PROFESSIONAL CENTER

401 EAST GOLD COAST ROAD || PAPIILLION, NE

Healthpeak® | DOC LISTED NYSE

 PJ MORGAN
REAL ESTATE

Information furnished is from sources deemed reliable, but is not guaranteed by PJ Morgan Real Estate, or its agents and is subject to change, corrections, errors, omissions, prior sales or withdrawal, without notice.



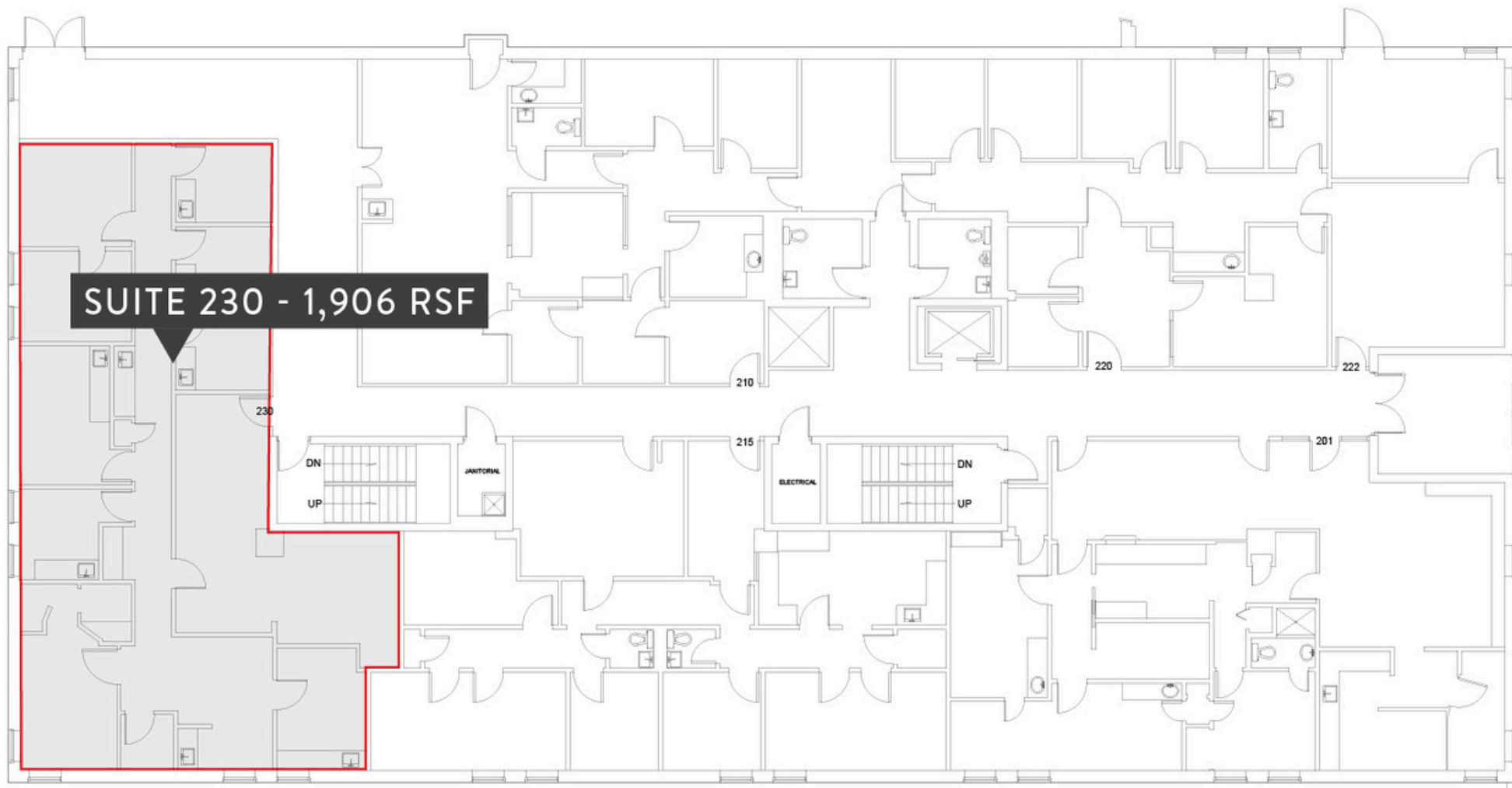
PROPERTY DETAILS

Lease Rate	Call for Rate	<i>Available June 1, 2024</i>	
Year Built	1976/1992	Suite 230	1,906 RSF
Total Building Area	32,027 SF	<i>Available July 1, 2024</i>	
Available Suite 305	1,775 RSF	Max Contiguous	5,775RSF
Available Suite 315	4,000 RSF		

DESCRIPTION

The Midlands Two Professional Center provides a strategic, direct connection to the CHI Health Midlands Campus in the Omaha suburb of Papillion. Building features include a landscaped outdoor seating area, renovated common areas, updated restrooms with baby changing stations on each level, and direct access to the hospital with vending and a cafeteria area.

On-site specialties include orthopedics, sports medicine, otolaryngology, and CHI Health support services. In addition, the campus is within walking distance of the Shadow Lake Towne Center, a popular shopping and dining destination. Locally and professionally managed by Owner.

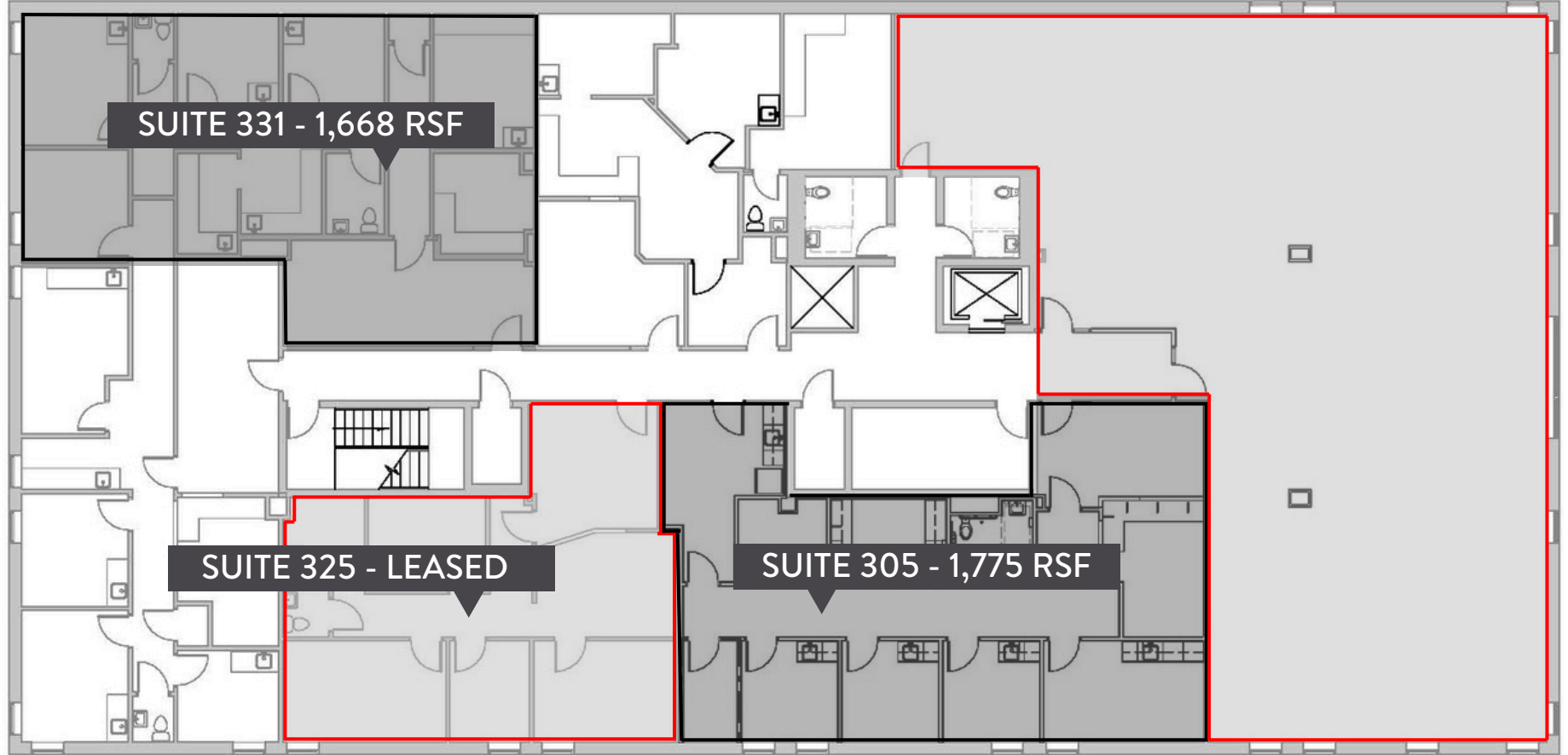


SUITE 230 - 1,906 RSF

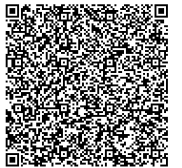
VIRTUAL TOUR RESEMBLING
AVAILABLE SUITE 305



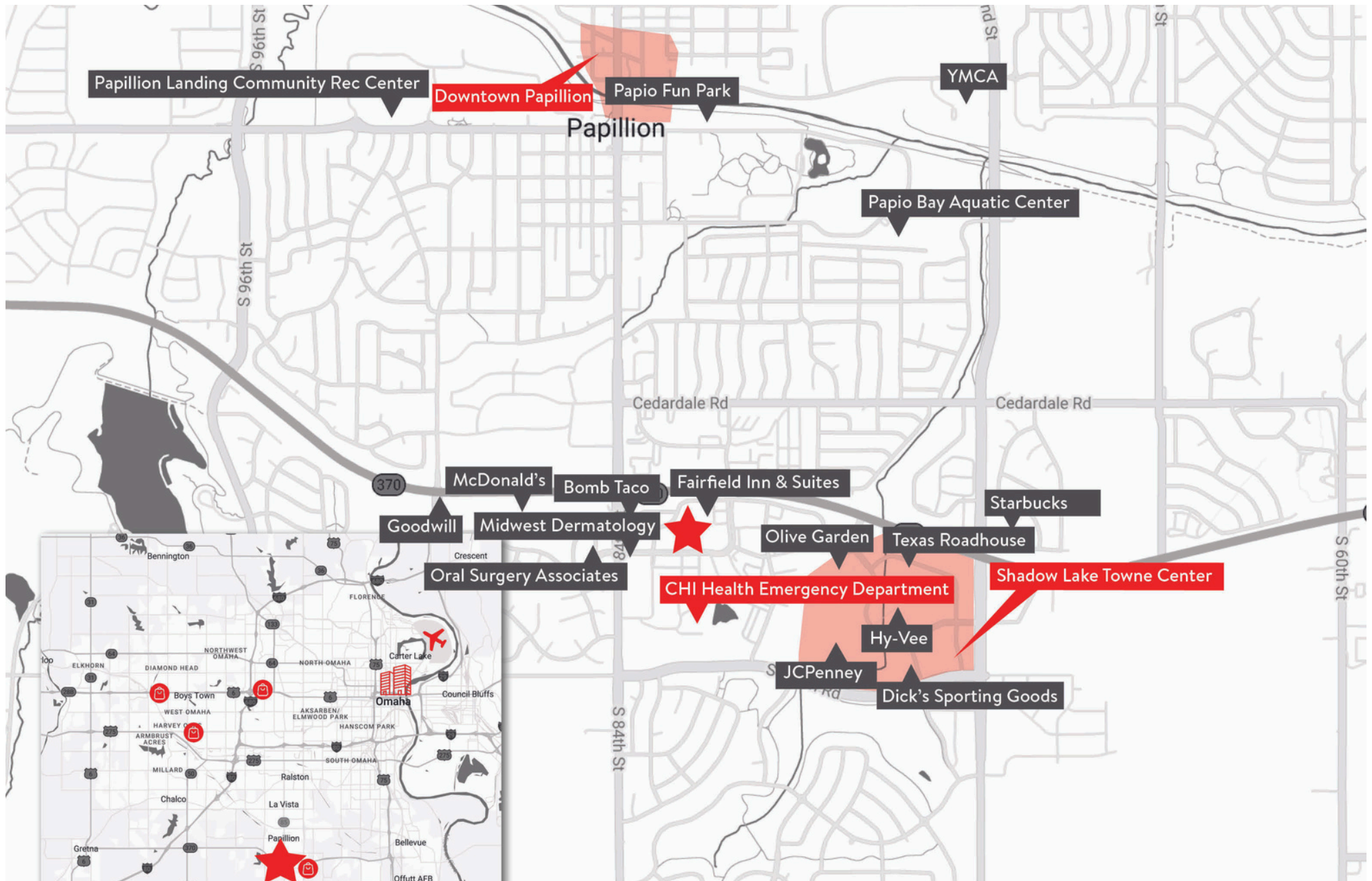
FLOOR PLAN SECOND FLOOR, SUITE 230



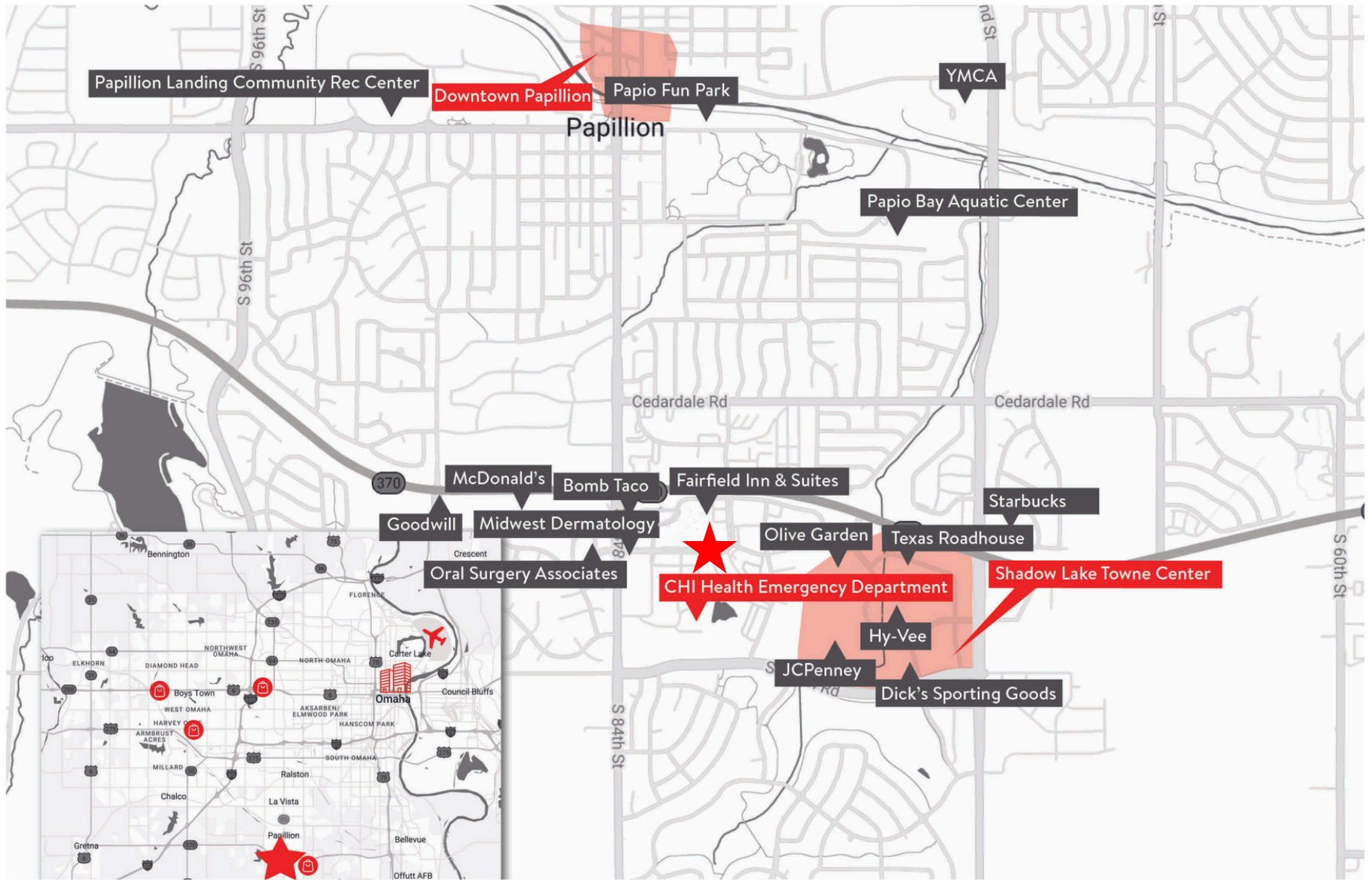
VIRTUAL TOUR RESEMBLING
AVAILABLE SUITE 305



FLOOR PLAN THIRD FLOOR, SUITE 305, SUITE 315



LOCATION



LOCATION



Call, email or text us today for leasing information!



RYAN ELLIS
rellis@pjmorgan.com
402-578-7536



DERICK LEWIN
dlewin@pjmorgan.com
402-651-1830

Healthpeak® | DOC LISTED NYSE

PJ MORGAN REAL ESTATE

Information furnished is from sources deemed reliable, but is not guaranteed by PJ Morgan Real Estate, or its agents and is subject to change, corrections, errors, omissions, prior sales or withdrawal, without notice.