

7526 Tyrone Avenue, Van Nuys, CA 91405
5,220SF INDUSTRIAL UNIT

FOR LEASE



CHAD GAHR, SIOR
O: 818 742 1626
cgahr@naicapital.com
Cal DRE Lic #01230414

DAVID YOUNG
O: 818 742 1651
dyoung@naicapital.com
Cal DRE Lic #00914504

NAI CAPITAL
15821 Ventura Blvd., Suite 320
Encino, CA 91436naicapital.
com | 818 905 2400

NAI Capital
COMMERCIAL REAL ESTATE SERVICES, WORLDWIDE

7526 Tyrone Avenue, Van Nuys, CA 91405
5,220SF INDUSTRIAL UNIT

FOR LEASE



PROPERTY FEATURES

Unit Size: 5,220 SF

Term: 3-5 Years

Lease Rate: \$2.35 / SF Gross

Features: Air Conditioned Unit
Fenced and Secured Business Park
2008 Construction

Office Area: 1,800 SF

Clearance Height: 20'

Loading: (2) 12' x 12' Ground Level Loading Doors

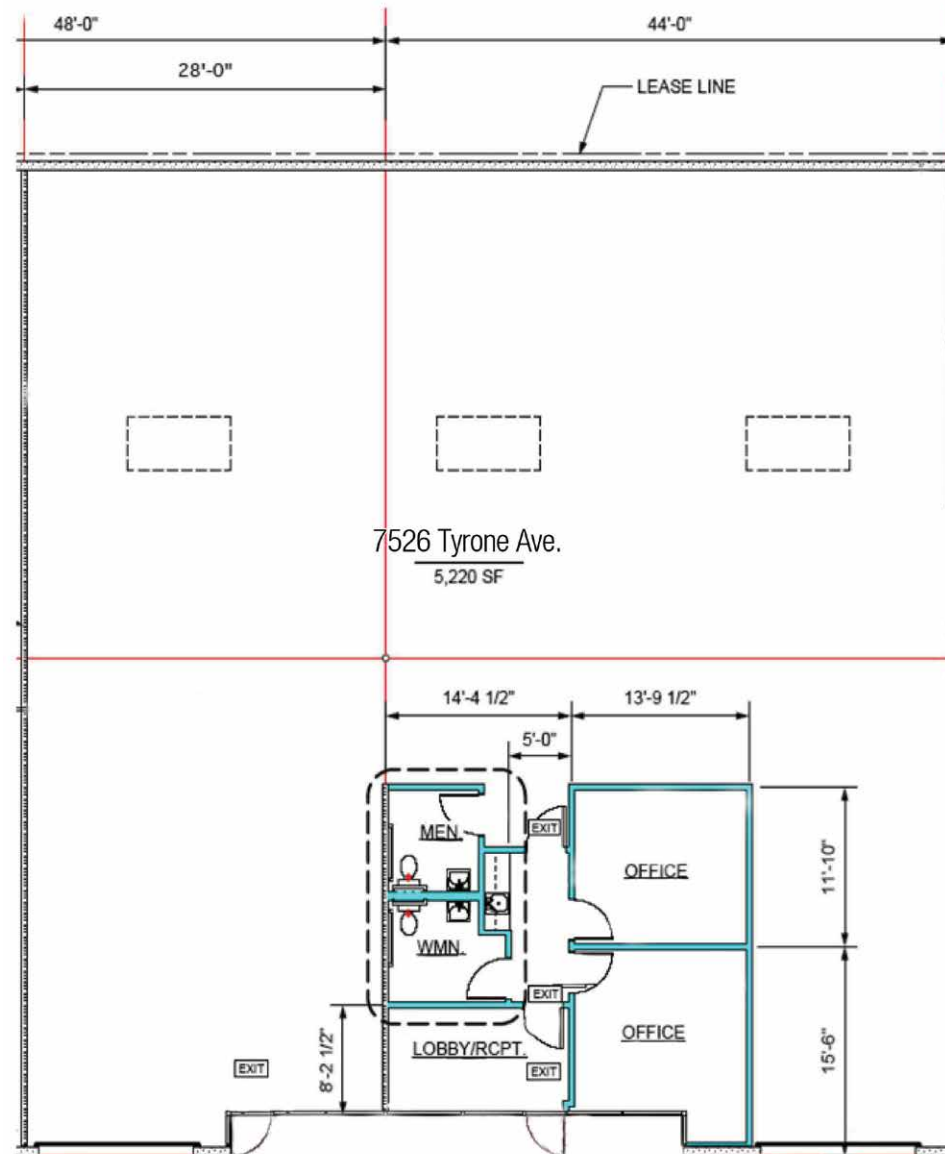
Parking: 10 Reserved Stalls

Power: 200 Amps of 120/208 Volt; 3 Phase

Fire Sprinklers: .33 / 3,000 GPM

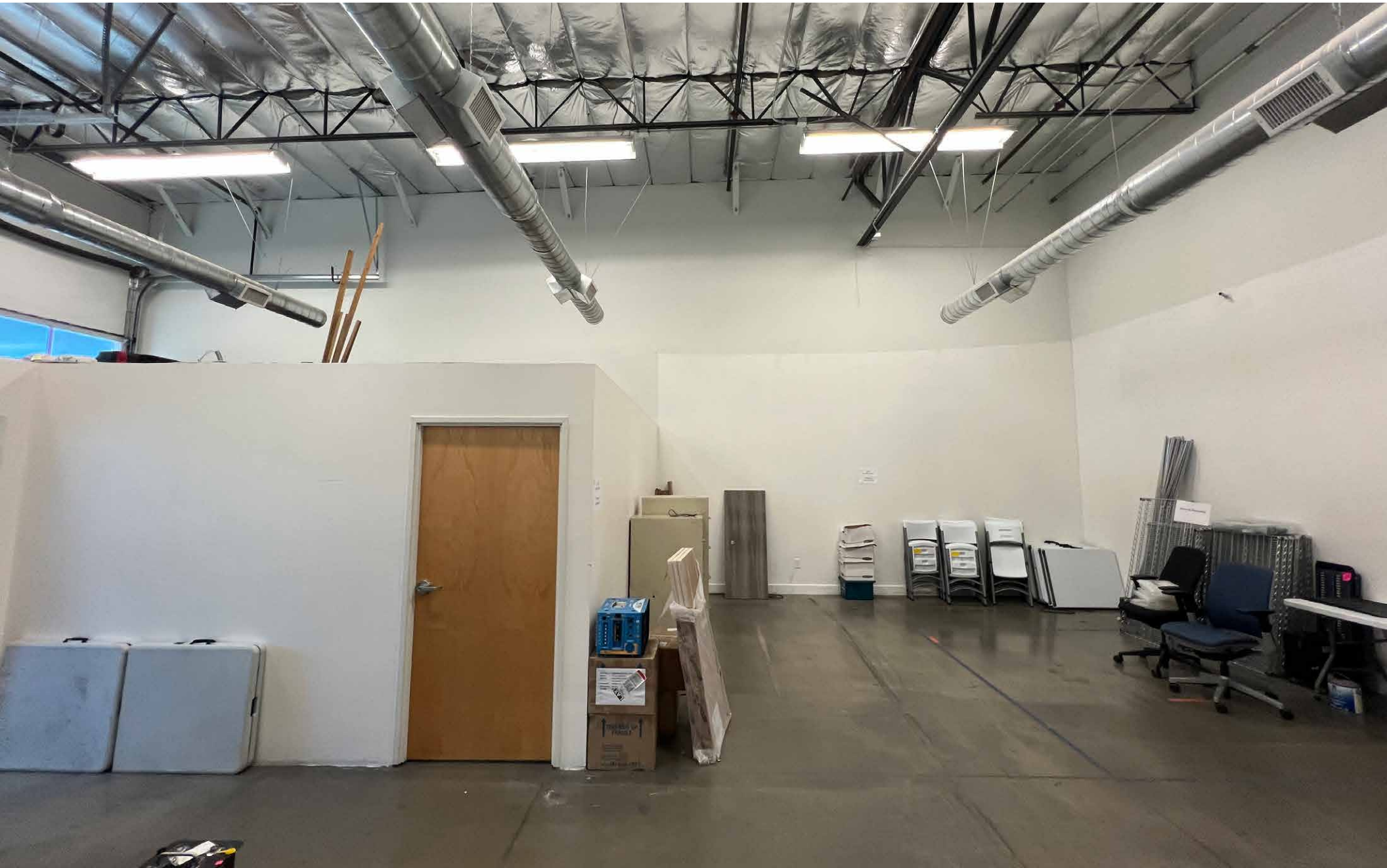
Location: Located near Van Nuys Boulevard
& Sherman Way.
Nearby access to 405 Freeway.

FLOOR PLAN



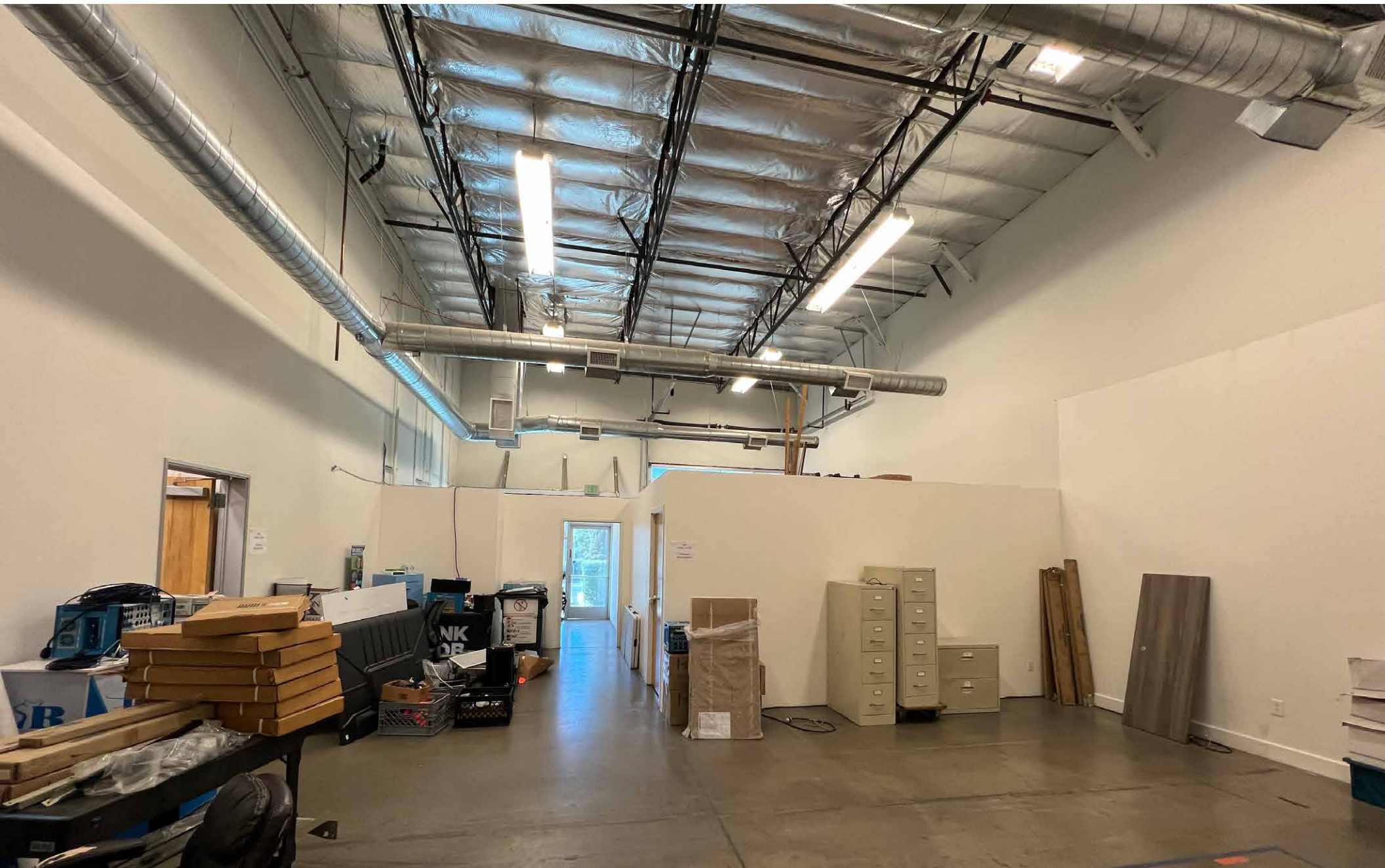
7526 Tyrone Avenue, Van Nuys, CA 91405
5,220SF INDUSTRIAL UNIT

FOR LEASE



7526 Tyrone Avenue, Van Nuys, CA 91405
5,220SF INDUSTRIAL UNIT

FOR LEASE



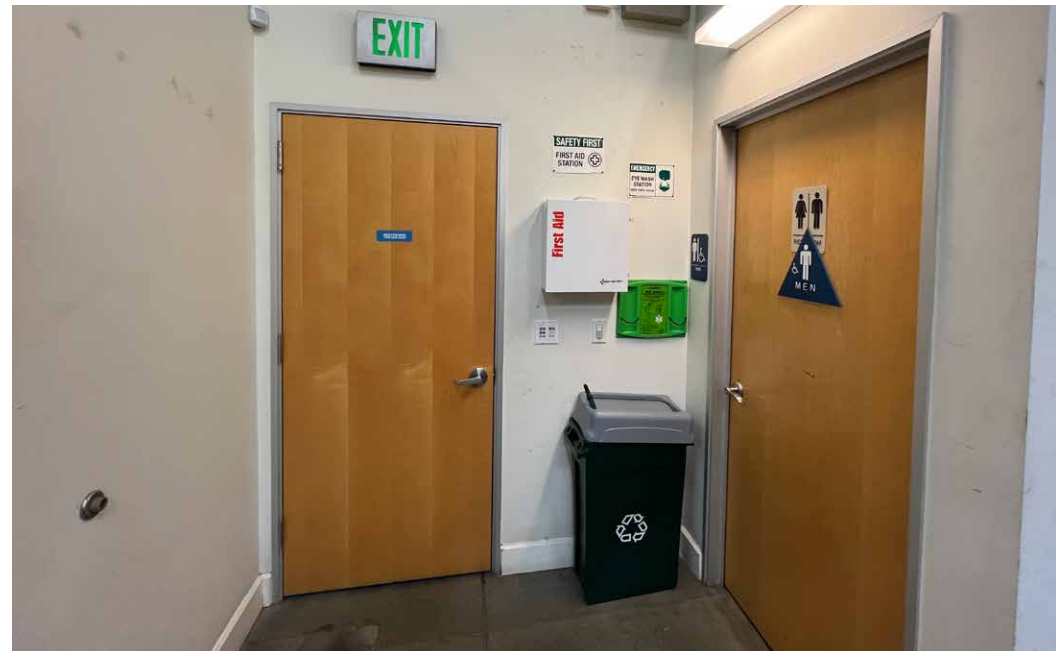
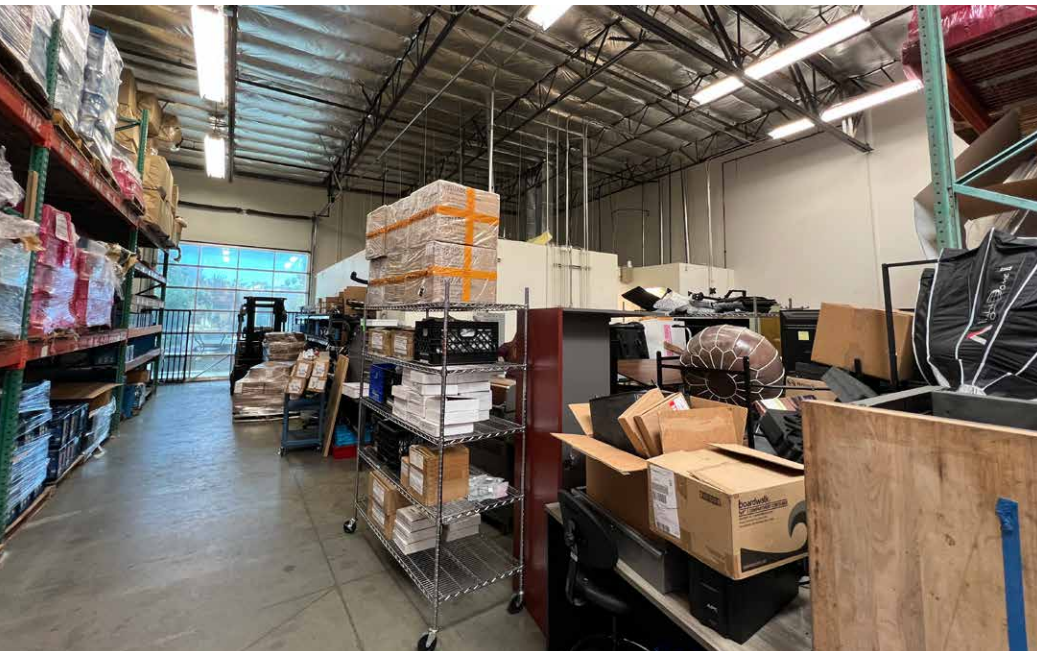
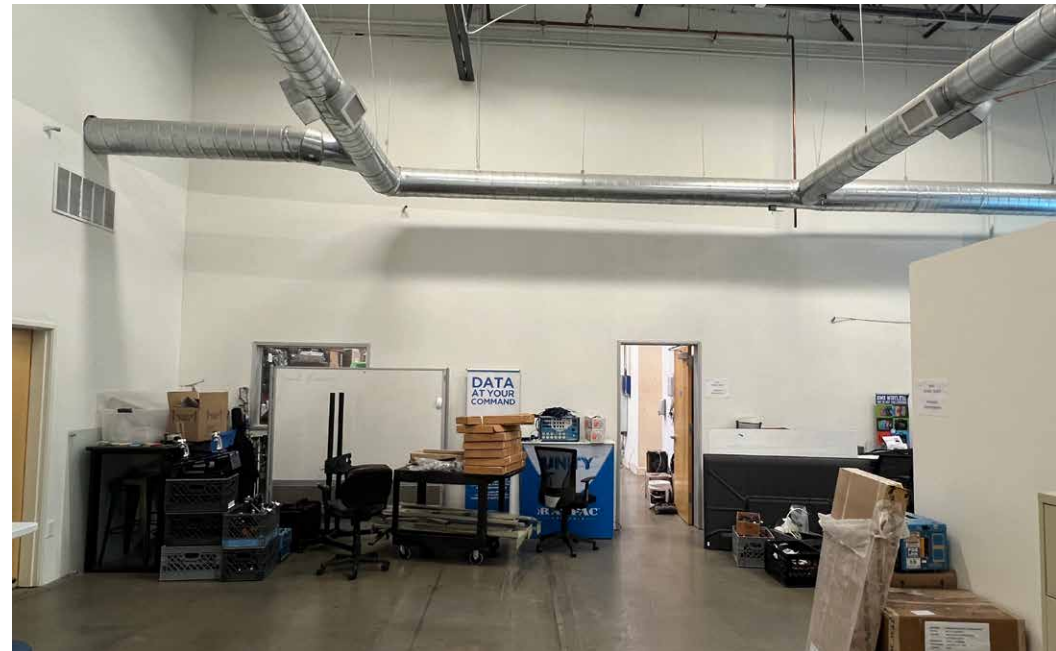
7526 Tyrone Avenue, Van Nuys, CA 91405
5,220SF INDUSTRIAL UNIT

FOR LEASE



7526 Tyrone Avenue, Van Nuys, CA 91405
5,220SF INDUSTRIAL UNIT

FOR LEASE



7526 Tyrone Avenue, Van Nuys, CA 91405
5,220SF INDUSTRIAL UNIT

FOR LEASE



VAN NUYS

SITE

SATICOY ST

COVELLO ST

TYRONE AVE



7526 Tyrone Avenue, Van Nuys, CA 91405
5,220SF INDUSTRIAL UNIT

FOR LEASE



7526 Tyrone Avenue, Van Nuys, CA 91405
5,220SF INDUSTRIAL UNIT

FOR LEASE



CHAD GAHR, SIOR
O: 818 742 1626
cgahr@naicapital.com
Cal DRE Lic #01230414

DAVID YOUNG
O: 818 742 1651
dyoung@naicapital.com
Cal DRE Lic #00914504

NAI CAPITAL
15821 Ventura Blvd., Suite 320
Encino, CA 91436
naicapital.com | 818 905 2400

No warranty, express or implied, is made as to the accuracy of the information contained herein. This information is submitted subject to errors, omissions, change of price, rental or other conditions, withdrawal without notice, and is subject to any special listing conditions imposed by our principals. cooperating brokers, buyers, tenants and other parties who receive this document should not rely on it, but should use it as a starting point of analysis, and should independently confirm the accuracy of the information contained herein through a due diligence review of the books, records, files and documents that constitute reliable sources of the information described herein. NAI Capital Cal DRE Lic #02130474

NAI Capital
COMMERCIAL REAL ESTATE SERVICES, WORLDWIDE