

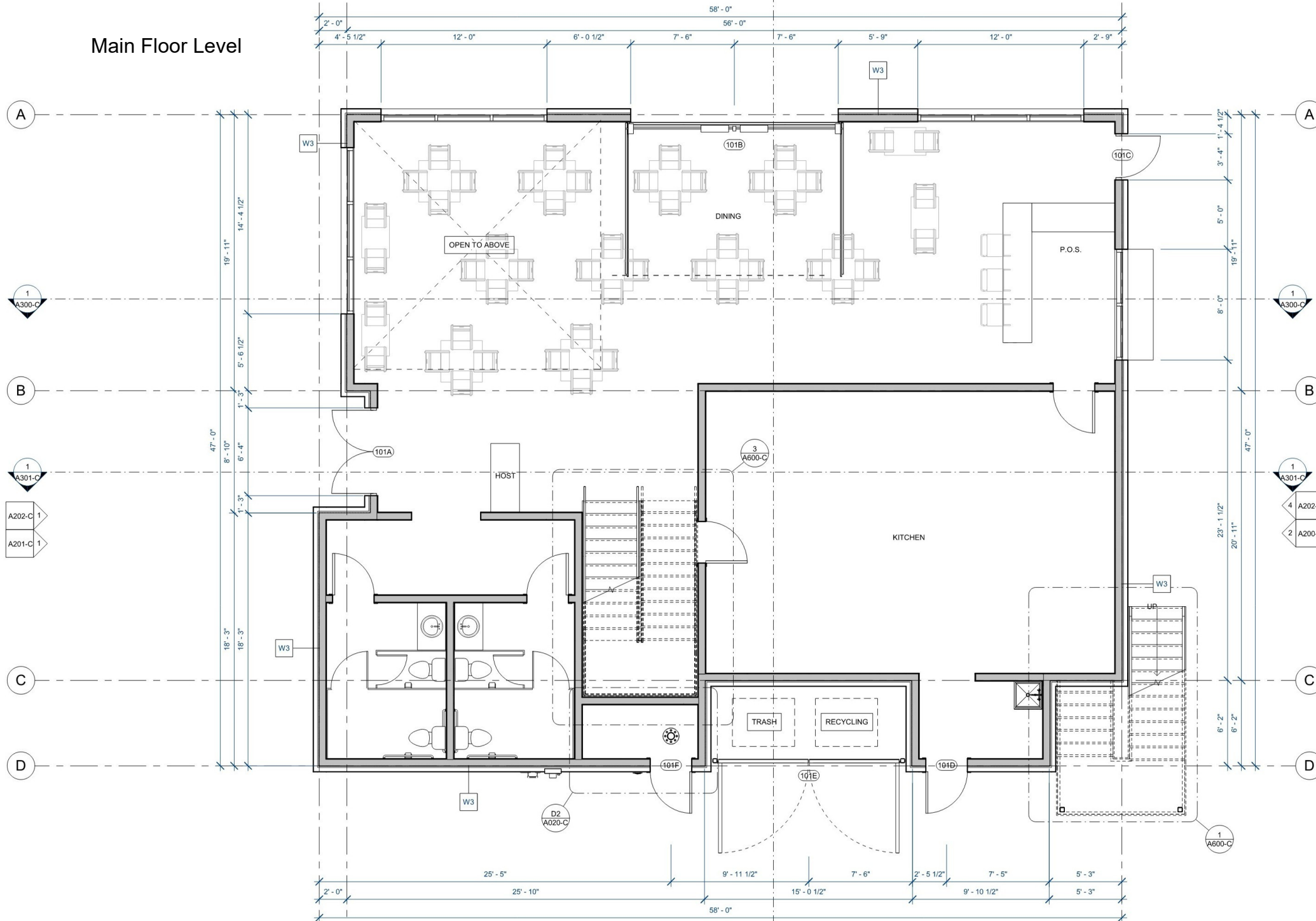
1810 Washington Blvd Ogden UT 84401

Commercial For Lease



*The drawings and images provided herein are concepts only and are subject to change.

Main Floor Level



Second Floor Level

This architectural floor plan illustrates the layout of the second floor, featuring a variety of functional spaces and their dimensions. The plan is oriented with North at the top.

Rooms and Dimensions:

- OPEN TO BELOW:** A large rectangular area at the top left, measuring 12'-0" by 14'-4 1/2".
- BAR:** Located along the bottom wall of the 'OPEN TO BELOW' area, measuring 12'-0" by 1'-3".
- DINING:** A large central area measuring 20'-11" by 12'-1 7/16". It contains several clusters of tables and chairs.
- PRIVATE DINING:** A rectangular room measuring 20'-11" by 6'-0", featuring a large rectangular table and chairs.
- OFFICE:** A small room measuring 6'-2" by 6'-2 9/16", located at the bottom left.
- CATERING:** A room measuring 8'-0" by 3'-0", located at the bottom center.
- MECH. (Mechanical):** A room measuring 9'-4 1/2" by 2'-10", located at the bottom center.
- PATIO:** An outdoor area measuring 18'-0" by 12'-2 1/2", located at the top right.
- Staircases:** Two staircases are shown, labeled 'DN' (Down), with dimensions of 3'-5 1/2" by 6'-2" and 3'-0" by 6'-0".
- Other Dimensions:** The overall width of the plan is 59'-6", and the overall depth is 47'-0". Various other dimensions are provided for specific areas and furniture placement.

Annotations and Notes:

- Room numbers 201A and 201B are indicated near the patio and private dining areas, respectively.
- Room numbers 4 A300-C, 4 A301-C, 4 A202-C, and 2 A200-C are listed on the right side of the plan.
- Room numbers 1 A300-C, 1 A301-C, 4 A202-C, and 2 A200-C are listed on the left side of the plan.
- Room numbers 1 A300-C, 1 A301-C, 4 A202-C, and 2 A200-C are listed on the right side of the plan.
- Room numbers 1 A300-C, 1 A301-C, 4 A202-C, and 2 A200-C are listed on the left side of the plan.