

1310  
↓

Lafayette 30

COLT

370

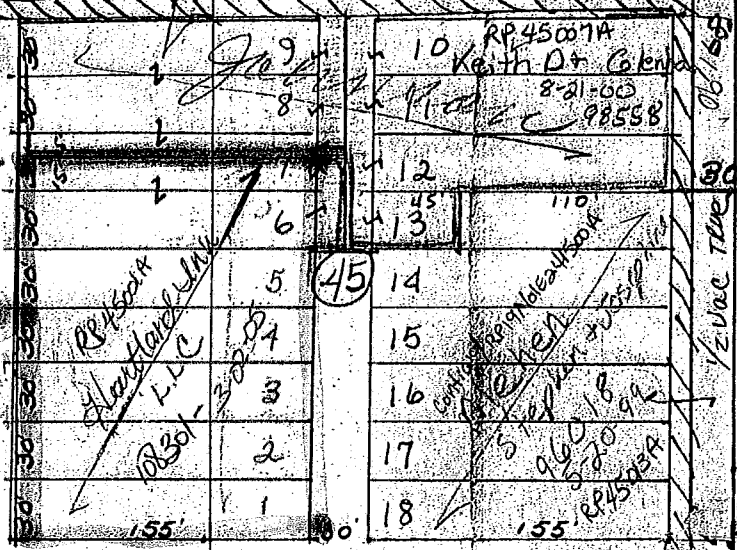
1/2 Vacated COLT 1053

80'

US

HWY

95



NORA

W NORA

340'

7000  
TX# 1660

Christophers New Meadows LLC  
(Vacated 25) (577) LLC  
108745 "4-22-05"

TAX# 1428  
7025  
1.36 AC

CHRISTIAN  
OUTREACH, INC.  
9-18-05  
104520

(US HWY 95)  
Virginia  
80

NO 39'02" W 312.77'

30' Vacated Truesdale

100' 240' 340'

500 LBS  
GRANITE VIEW, LLC

218.82'

281.51'  
281.51'