

14968+14908 S BLACKBOB RD

OLATHE, KS 64102



REECE

COMMERCIAL REAL ESTATE

a Berkshire Hathaway Affiliate

FOR SALE



JIM THOME

913.548.8700

JTHOME@REECECOMMERCIAL.COM



ALEX THOME

913.709.3849

ATHOME@REECENICHOLS.COM

- LOT 2 (A+B)
  - 14968 S BLACKBOB ROAD
  - 66,407 SF
  - \$17/PSF
  - PRELIMINARY BUILDING SIZE 19,700 SF (2 STORY)
- LOT 2A
  - 32,993 SQFT
  - \$22 PSF

- LOT 4
  - 14908 S BLACKBOB ROAD
  - 41,644 SF
  - \$15/PSF
  - PRELIMINARY BUILDING SIZE 10,000 SF
  - CAN BE COMBINE WITH LOT 2B (33,414 SQFT)
  - TOTAL 75,059 SQFT

DEMOGRAPHICS

	1 MILE	3 MILE	5 MILE
2023 POPULATION	14,252	86,105	471,208
2023 MED HOUSEHOLD INCOME	\$113,153	\$105,704	\$97,078

The information above has been obtained from sources believed reliable. While we do not doubt its accuracy we have not verified it and make no guarantee, warranty or representation about it. It is your responsibility to independently confirm its accuracy and completeness. Any projections, opinions, assumptions, or estimates used are for example only and do not represent the current or future performance of the property. You and your advisors should conduct a careful, independent investigation of the property to determine to your satisfaction the suitability of the property for your needs. © 2020

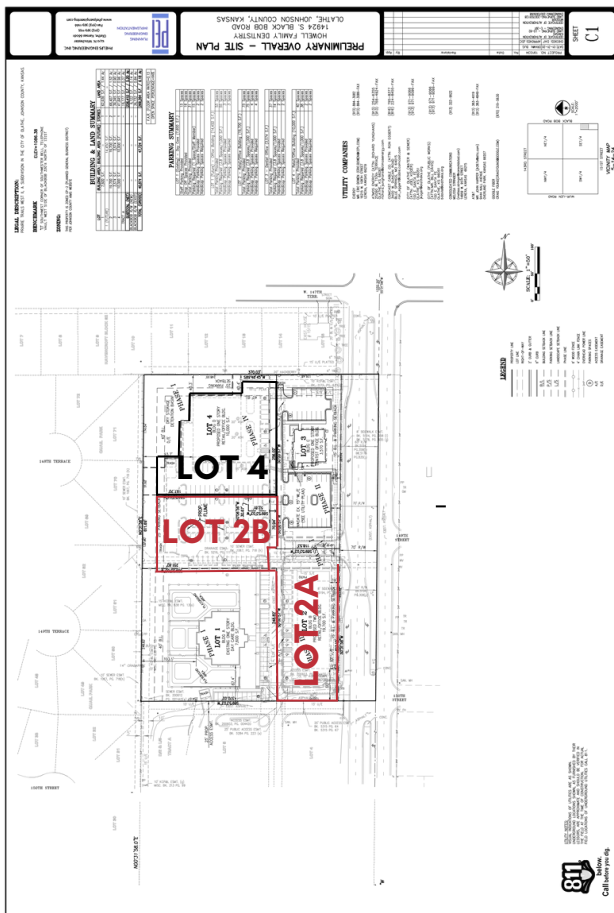
14968+14908 S BLACKBOB RD

OLATHE, KS 64102



REECE  
COMMERCIAL REAL ESTATE

a Berkshire Hathaway Affiliate



**JIM THOME**

913.548.8700

JTHOME@REECECOMMERCIAL.COM

**ALEX THOME**

913.709.3849

ATHOME@REECECOMMERCIAL.COM

The information above has been obtained from sources believed reliable. While we do not doubt its accuracy we have not verified it and make no guarantee, warranty or representation about it. It is your responsibility to independently confirm its accuracy and completeness. Any projections, opinions, assumptions, or estimates used are for example only and do not represent the current or future performance of the property. You and your advisors should conduct a careful, independent investigation of the property to determine to your satisfaction the suitability of the property for your needs. © 2020