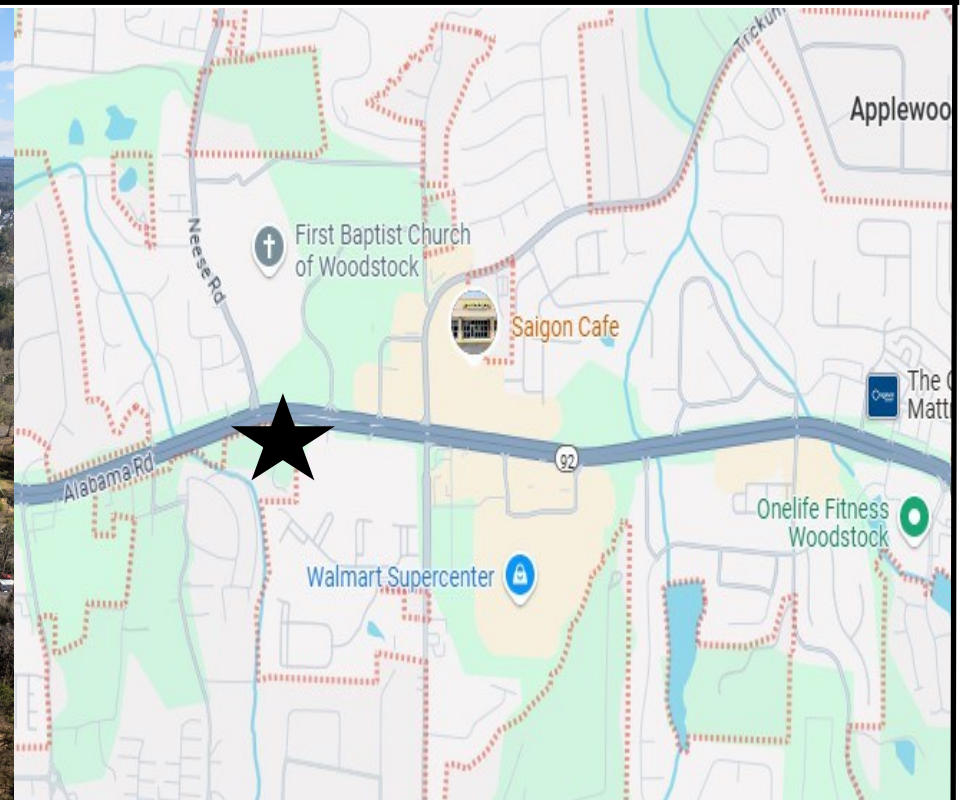


LAND for SALE



- ◆ Busy Hwy 92 Woodstock, Ga 30188
- ◆ 3 - 5+/- acres / Lighted intersection
- ◆ Cherokee County
- ◆ 1.59 acres: \$397,500 / 3.88 acres: \$1 mil

- ◆ Potential Commercial
- ◆ All utilities available
- ◆ Excellent visibility / Traffic counts 49,300 CPD
- ◆ Potential Commercial / currently Zoned R-20

Tabra Word email: tabraword@gmail.com

Direct: 404-379-7455 Office: 770-240-2005





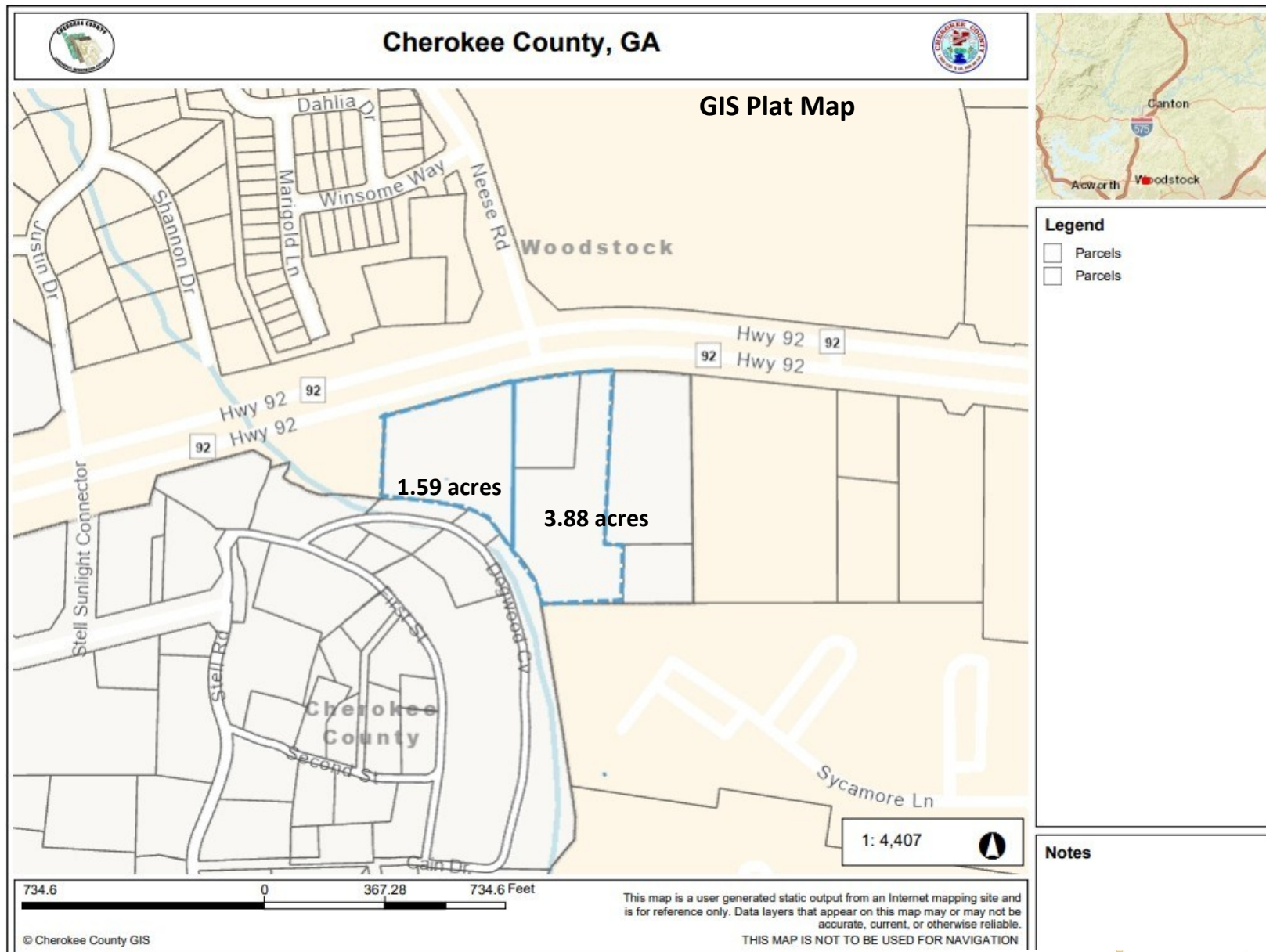
Hwy 92 Aerial Views



Tabra Word email: tabraword@gmail.com

Direct: 404-379-7455 Office: 770-240-2005





Tabra Word email: tabraword@gmail.com

Direct: 404-379-7455 Office: 770-240-2005



DEMOGRAPHICS

2025 Projected Population

The 2025 projected population for 30188 is 67,154. This projection assumes an annual rate of change of 0.9%, consistent with the 4.4% population change from 2018 to 2023 according to the US Census Bureau's American Community Survey.

2023 Population

With 65,980 people, 30188 is the 14th most populated zip code in the state of Georgia out of 735 zip codes according to the most current US Census data. But watch out, 30188, because [30022](#) with 64,919 people and [30253](#) with 64,108 people are right behind you.

Race & Ethnicity

The largest 30188 racial/ethnic groups are White (74.1%) followed by Hispanic (9.3%) and Black (6.7%).

Median Income

In 2023, the median household income of 30188 households was \$105,395. 30188 households made slightly more than [30317](#) households (\$105,190) and [30127](#) households (\$104,997) . However, 5.2% of 30188 families live in poverty.

Median Age

The median age for 30188 residents is 39.7 years young.

Demographics

† Margin of error is at least 10 percent of the total value. Take care with this statistic.

Tabra Word email: tabraword@gmail.com

Direct: 404-379-7455 Office: 770-240-2005



DEMOGRAPHICS

Income

\$49,703

Per capita income

about 10 percent higher than the amount in the Atlanta-Sandy Springs-Roswell, GA Metro Area: \$44,798

about 25 percent higher than the amount in Georgia: \$39,525

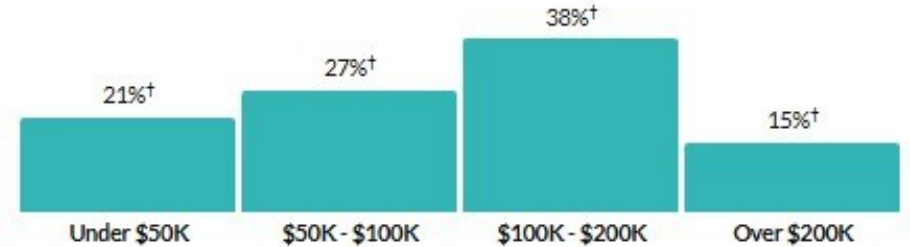
\$105,396

Median household income

about 25 percent higher than the amount in the Atlanta-Sandy Springs-Roswell, GA Metro Area: \$86,338

about 1.4 times the amount in Georgia: \$74,664

Household income



[Show data / Embed](#)

Value

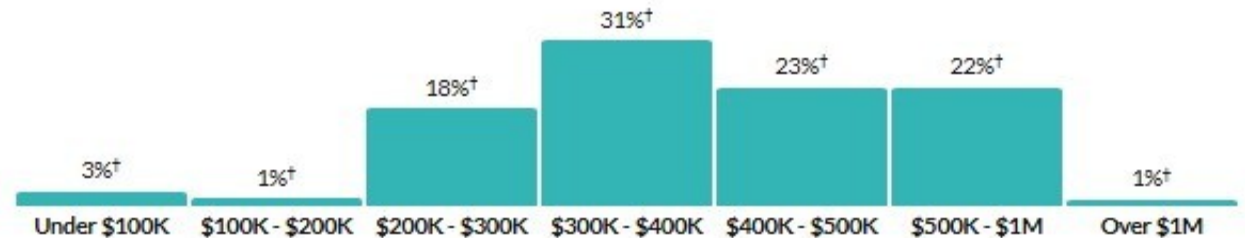
\$387,300

Median value of owner-occupied housing units

about 20 percent higher than the amount in the Atlanta-Sandy Springs-Roswell, GA Metro Area: \$335,100

about 1.4 times the amount in Georgia: \$272,900

Value of owner-occupied housing units



[Show data / Embed](#)

Demographics

† Margin of error is at least 10 percent of the total value. Take care with this statistic.

Tabra Word email: tabraword@gmail.com

Direct: 404-379-7455 Office: 770-240-2005



DEMOGRAPHICS

Age

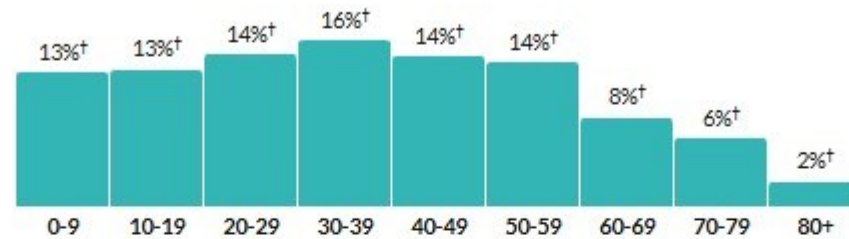
36.1

Median age

about the same as the figure in the
Atlanta-Sandy Springs-Roswell, GA
Metro Area: 37

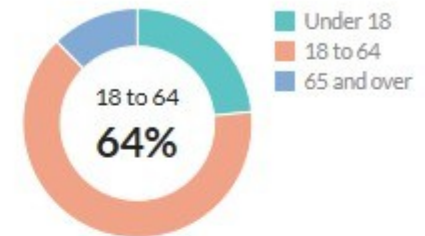
a little less than the figure in Georgia:
37.4

Population by age range



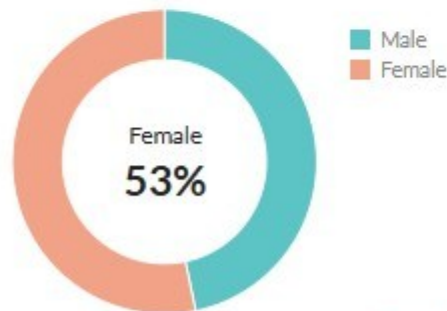
[Show data / Embed](#)

Population by age category



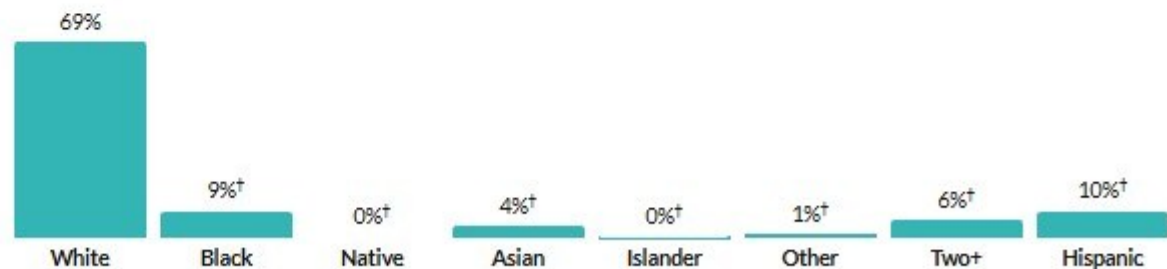
[Show data / Embed](#)

Sex



[Show data / Embed](#)

Race & Ethnicity



* Hispanic includes respondents of any race. Other categories are non-Hispanic.

[Show data / Embed](#)

Demographics

† Margin of error is at least
10 percent of the total value.
Take care with this statistic.

Tabra Word email: tabraword@gmail.com

Direct: 404-379-7455 Office: 770-240-2005

