



## Property Information

<b>Location:</b>	140 East Tyler Street Longview, Texas
<b>Available Space:</b>	5 <sup>th</sup> Floor Approx. 4,546 SF available
<b>Amenities:</b>	Janitorial Services 5 days a week Fire Safety Technology Fiber installed throughout Secured 24 hour access
<b>Description:</b>	Glover Crim Building is conveniently located in Downtown Longview, not far from the Gregg County Courthouse, Post Office, banks and local eateries.

*For more information:*

Walter R. Northcutt  
(903) 753-2191  
[wnorthcutt@beerwellseasttexas.com](mailto:wnorthcutt@beerwellseasttexas.com)

**AVAILABLE SPACE**  
*(Actual Layout May Vary)*



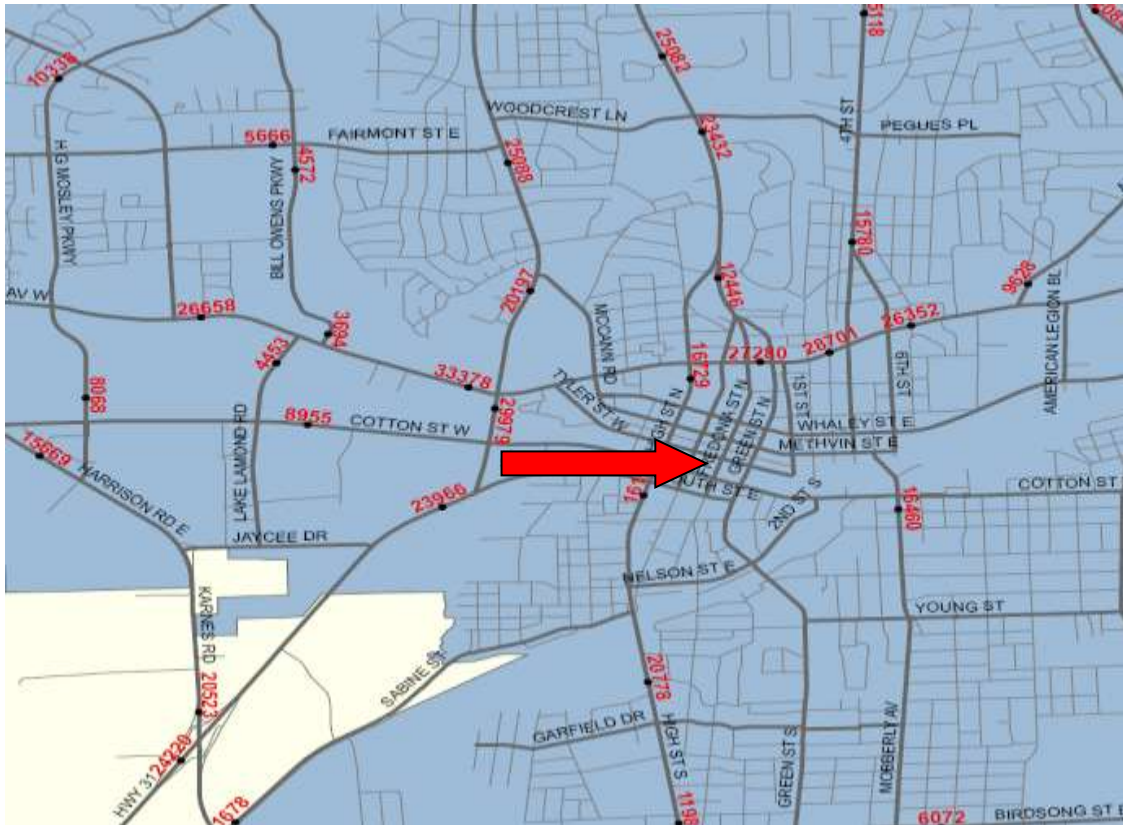
**LOBBY**



**MAIL BOXES**



## TRAFFIC COUNTS



## AERIAL

