

**CEDAR SIDE  
BUILDING D.2  
NEW CONSTRUCTION  
RETAIL/OFFICE SUITES FOR LEASE**







# CEDARSIDE

26803 72<sup>nd</sup> Ave NW  
Stanwood, WA 98292

**BUILDING D2**

**RETAIL/OFFICE SUITES AVAILABLE**  
**WITHIN NEWLY BUILT MODERN**  
**APARTMENT/TOWNHOME COMMUNITY**



**Welcome to Stanwood**  
**Northwest Living & Working**  
**at its finest**





**CEDARSIDE: BLDG D 2**

**Grand Opening: May 2026**









## OFFERING SUMMARY

**KW COMMERCIAL, GSWA MCI LLC  
IS PLEASED TO PRESENT:**

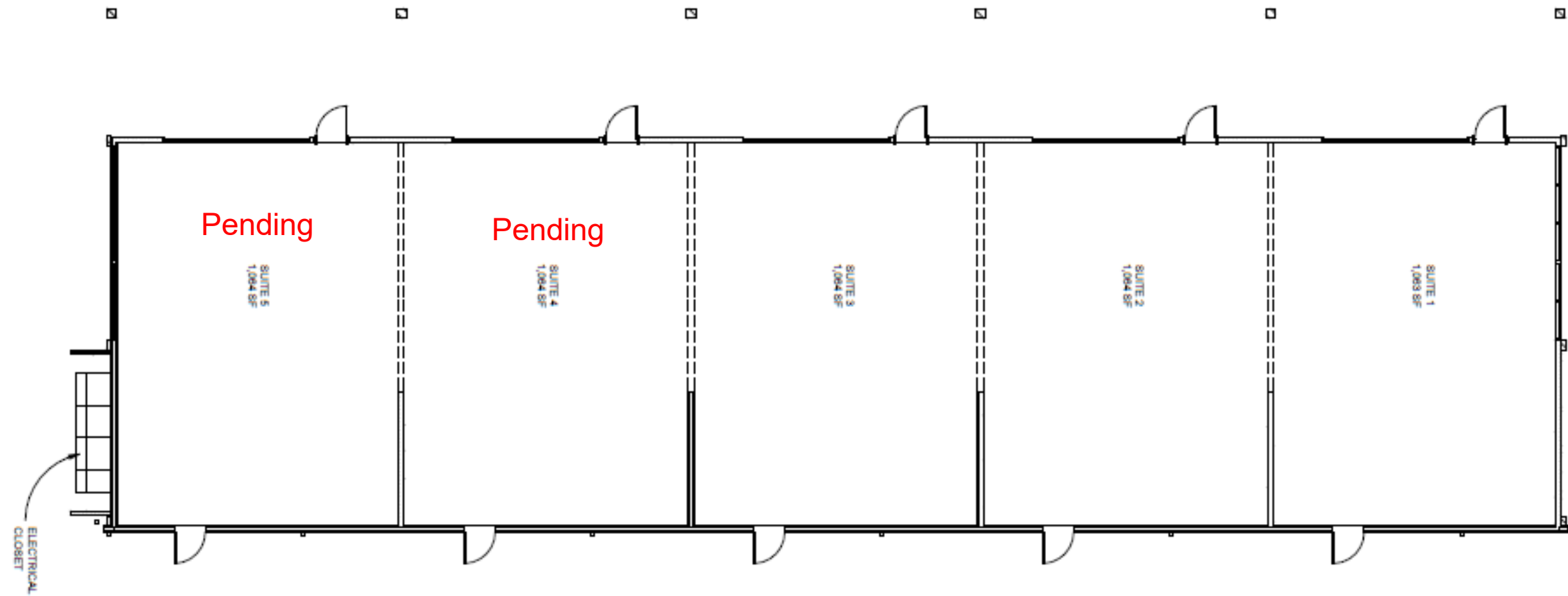
**CEDARSIDE: RETAIL/OFFICE SUITES**

### **PROPERTY HIGHLIGHTS:**

- Zoning: Retail & Office (Mixed Use)
- Plenty of Parking
- Walkable 516-Unit community
- Great location for your Restaurant
- Stanwood High School right across the street
- Surrounded by Single Family Residence
- Bring your Vision to this growing Stanwood area!
- Call for tours since the property is still being built out
- Minutes from I-5



# Welcome to Stanwood!



## BUILDING D2

**\$25.00 +  
NNN**

**LEASE PRICE  
PER SF**

**1064-5,320  
RSF**

**RETAIL SF PER BLDG**

## Premier Location in Stanwood

Excellent Hwy 532 exposure  
Class A Building and finishes.

**Suites are Vanilla Shell  
Suites can be combined**

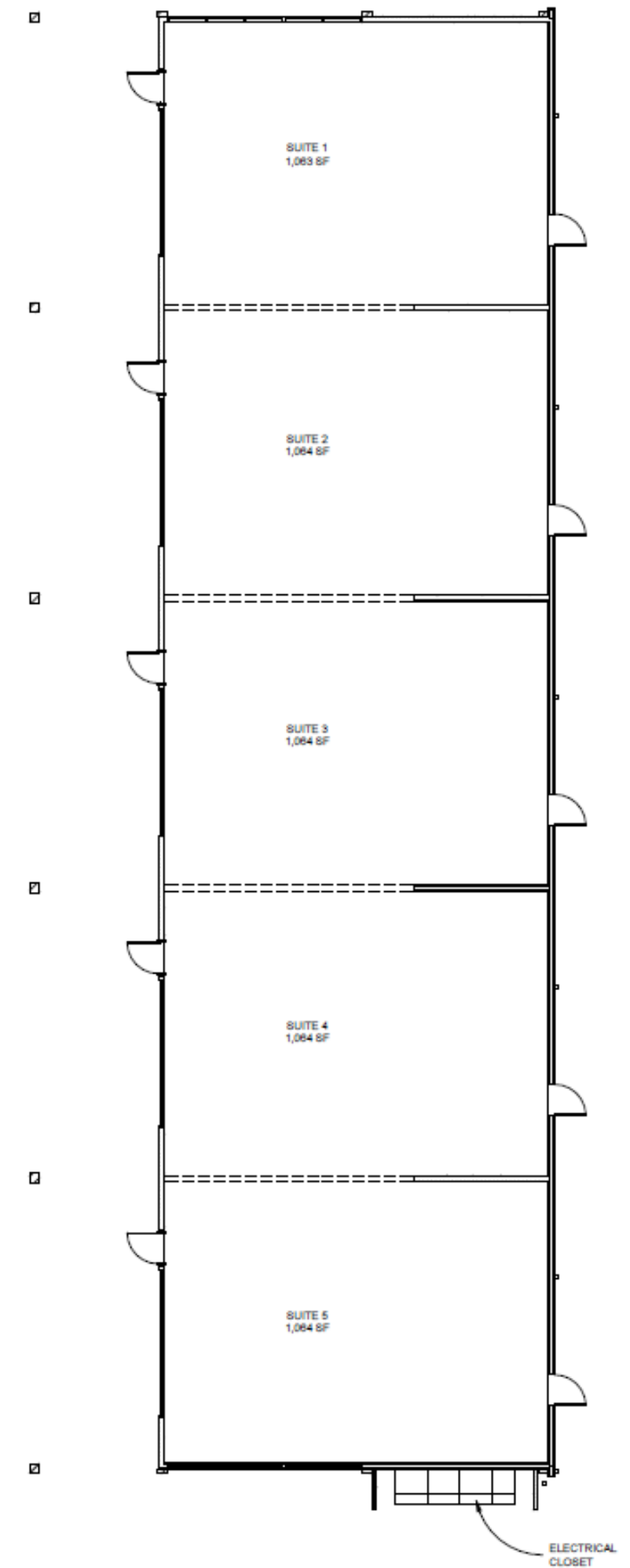
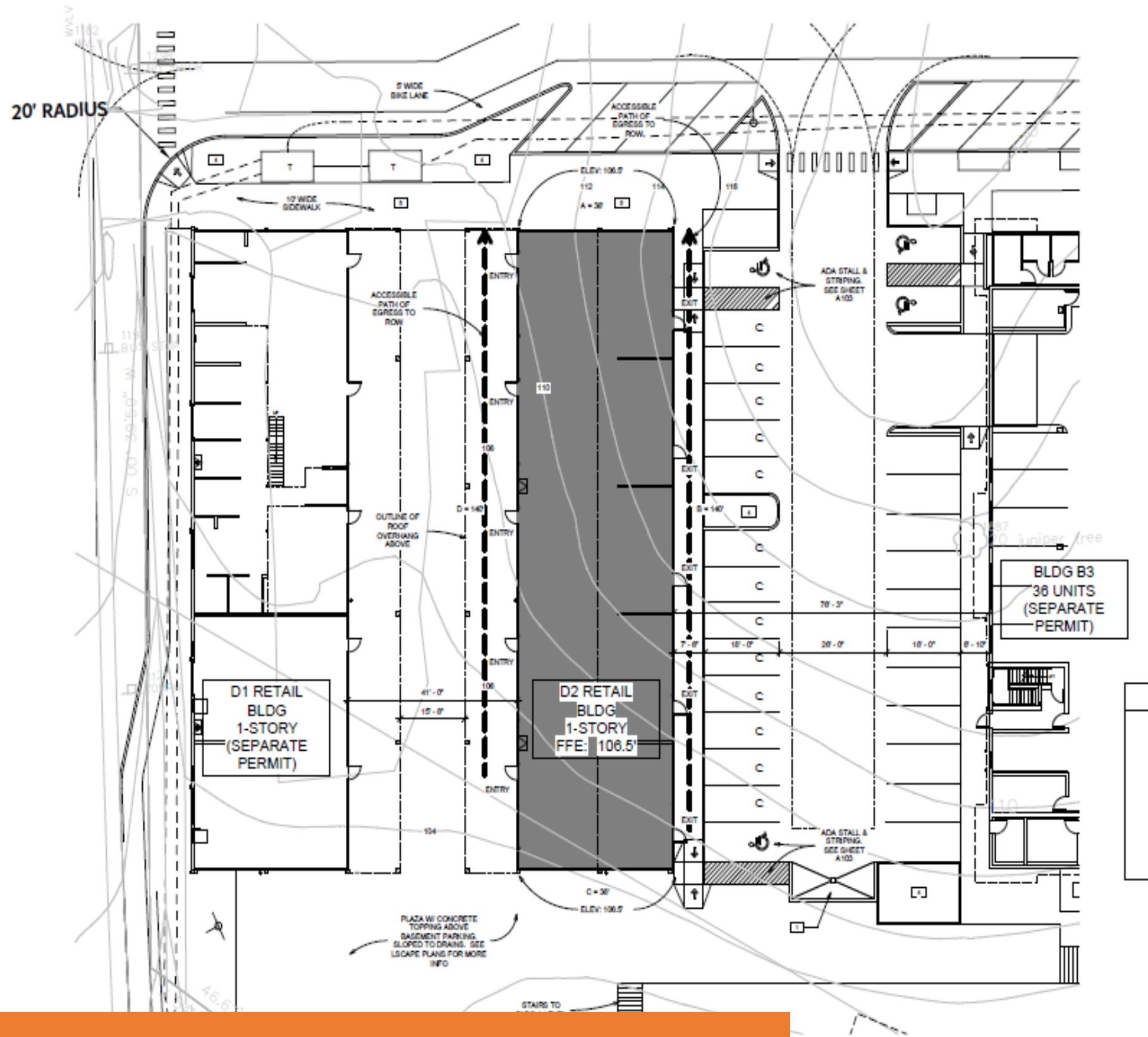


**60 Stalls +  
CALL FOR MORE  
INFO**



**EASY ACCESS TO  
Hwy I-5**





# CEDARSIDE: BLDG D2

## SITE PLAN



# CEDAR SIDE

## MIXED USE DEVELOPMENT







# VANILLA SHELL CONDITION

Floors	Concrete Decking
Electrical	200 amps of 3 phase to each unit.
Sub metered	Each unit sub metered
HVAC	Depending on size of units, they can be supplied with a mini split for heating and cooling.
Water	Landlord will install a 2” line. Water is shared and will be prorated to each tenant based on consumption.
Vent	Venting for mini split will be available for each unit.
Sanitary	Landlord has provided a four inch (6”) sanitary waste lateral below the slab of each suite.
Grease Interceptor	For the Restaurant spaces only. Ashland PolyTrap 4800 Grease Interceptor recommended to be installed with the kitchen.
Natural Gas	Available to each unit is a 2” line and can be pulled off to each unit in necessary size.
Demising Suite Walls	Internal walls can be added to preference and certain units can be combined by a 7’ x 8’ tall passthrough between units.
Sprinkler	Landlord has provided sprinkler system distributed throughout all units to accommodate shell occupancy.



# Overview



Stanwood is the commercial and cultural hub of the greater Stanwood/Camano community. The City has retained its small-town character and sense of community. The City's historic resources have been preserved and the connections to the surrounding agricultural land and rural environment have been strengthened.

New residential neighborhoods and commercial centers form an aesthetically pleasing community character. Residents and visitors are able to move safely through the City to ease conflicts between pedestrians, bicyclists, and automobiles, and reduce suburban sprawl. The City and community work cooperatively together to promote tourism, access to local natural features, and special events.

## Community Attractions

A new train station opened in the fall of 2009. Near the station, visitors will find [Ladders and Lace](#), [Guided Gallery](#), and many other unique shops within a one-block walk. When the hungry bug bites, Stanwood has [Mammoth Burger](#), [Amigo Mexican Restaurant](#), [Jimmy's Pizza and Pasta](#), and the [Cookie Mill](#), just to name a few. If music is your thing, join us for the Stanwood Summer Concert Series or karaoke at the [Stanwood Hotel and Saloon](#). Stanwood farms feature fresh locally grown produce throughout the spring, summer, and fall.

The Municipal Parking lot behind the Stanwood Police Station is the site for the [Stanwood Farmer's Market](#) throughout the summer. The [Twin City Idlers](#) host a huge car show on the last Sunday in June. The first weekend in August is devoted to the [Stanwood/Camano Fair](#), a country fair with all the animals and exhibits you would expect from a quality event. Stanwood also plays host to Movies in the Park.

More information on events can be found at the [Discover Stanwood-Camano website](#).

# STANWOOD, WASHINGTON

## About Stanwood

The City of Stanwood is a charming rural town located in north Snohomish County. The area is celebrated for its rich Scandinavian history, vibrant community and agricultural roots. Stanwood offers a unique blend of quaint rural charm and contemporary urban conveniences. The city itself is made up of a small, hardworking team, committed to providing community members with quality services.





# CEDARSIDE

26803 72<sup>nd</sup> Ave NW Stanwood, WA 98292

**EXCLUSIVELY LISTED BY:**

**CONTACT INFORMATION:**

**Melissa Johnson**

Sr. Director | NW Regional Ambassador

[melissaj@kwcommercial.com](mailto:melissaj@kwcommercial.com)

(425) 765-3568



**FOR ADDITIONAL INFORMATION CONTACT:**

**Melissa Johnson**

**Sr. Director | NW Regional Ambassador**

**Keller Williams Commercial**

**Cell: 425-765-3568**

**[melissaj@kwcommercial.com](mailto:melissaj@kwcommercial.com)**

ALL information contained herein has been contained from reliable sources, but is not guaranteed. A prospective buyer should verify each item relating to this property, and all information contained herein.

*Each Keller Williams Realty Office is independently owned and operated*





*The information contained in this OFFERING Memorandum has been obtained from sources we believe to be reliable. However, KW Commercial GSWA MCI LLC has not and will not verify any of this information, nor have they conducted any investigation regarding these matters. KW Commercial, GSWA MCI LLC makes no guarantee, warranty or representation whatsoever about the accuracy or completeness of any information provided.*

*As the Tenant, it is the Tenants responsibility to independently confirm the accuracy and completeness of all material information before completing any purchase. This OFFERING Memorandum is not a substitute for your thorough due diligence investigation of this opportunity. KW Commercial GSWA MCI LLC denies any obligation to conduct a due diligence examination of this property for Buyer. Any projections, opinions, assumptions or estimates used in this OFFERING Memorandum are for example only and do not represent the current or future performance of this property. The value of a property to you depends on factors that should be evaluated by you and your tax, financial and legal advisors. Tenant and Tenants tax, financial, legal and construction advisors should conduct a careful, independent investigation of any property to determine to your satisfaction with the suitability of the property for your needs.*

*Like all real estate lease, Tenant and Tenants legal and financial advisors must request and carefully review all legal and financial documents on any Lease Agreement related to the property and tenants. Tenant is responsible for conducting their own investigation of all matters affecting the intrinsic value of the property.*

*Accepting this OFFERING Memorandum, you agree to release KW Commercial GSWA MCI LLC and hold them harmless from any kind of claim, cost, expense, or liability arising out of your investigation and/or purchase of this property.*

## Disclaimer