

# 450 E Moorestown Road

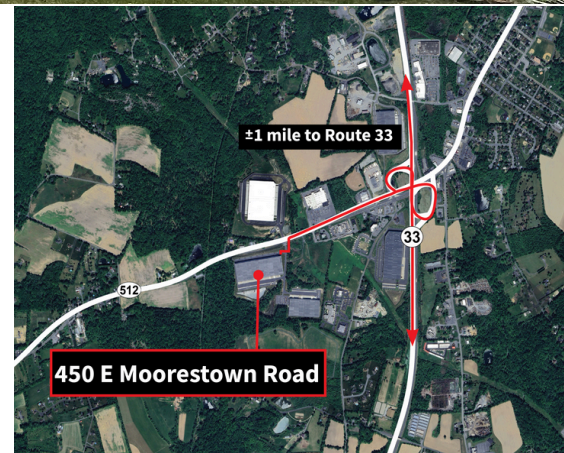
Wind Gap, PA

233,280 SF available for sublease



## Property specifications

- 349,920 SF building
- 233,280 SF available
- 1,800 SF main office
- 36' clear height
- 25 (9' x 10') loading doors fully equipped with levelers, seals, and bumpers
- 1 (14' x 16') drive-in door
- 37 trailer parking spaces
- 97 car parking spaces
- LED lighting
- 54' x 50' with 60' speed bay
- ESFR Sprinkler System
- Racking available upon request



**Larry Maister**

+1 610 249 2297

[larry.maister@jll.com](mailto:larry.maister@jll.com)

**Ryan Barros**

+1 610 249 2264

[ryan.barros@jll.com](mailto:ryan.barros@jll.com)

**Jeff Lockard**

+1 215 990 1889

[jeff.lockard@jll.com](mailto:jeff.lockard@jll.com)

**Kevin Lammers**

+1 610 249 2255

[kevin.lammers@jll.com](mailto:kevin.lammers@jll.com)



**Larry Maister**  
 +1 610 249 2297  
 larry.maister@jll.com

**Ryan Barros**  
 +1 610 249 2264  
 ryan.barros@jll.com

**Jeff Lockard**  
 +1 215 990 1889  
 jeff.lockard@jll.com

**Kevin Lammers**  
 +1 610 249 2255  
 kevin.lammers@jll.com