

3,429 SF FOR LEASE

# 1315 HOT SPRINGS WAY | SUITE 112

Vista, CA 92081



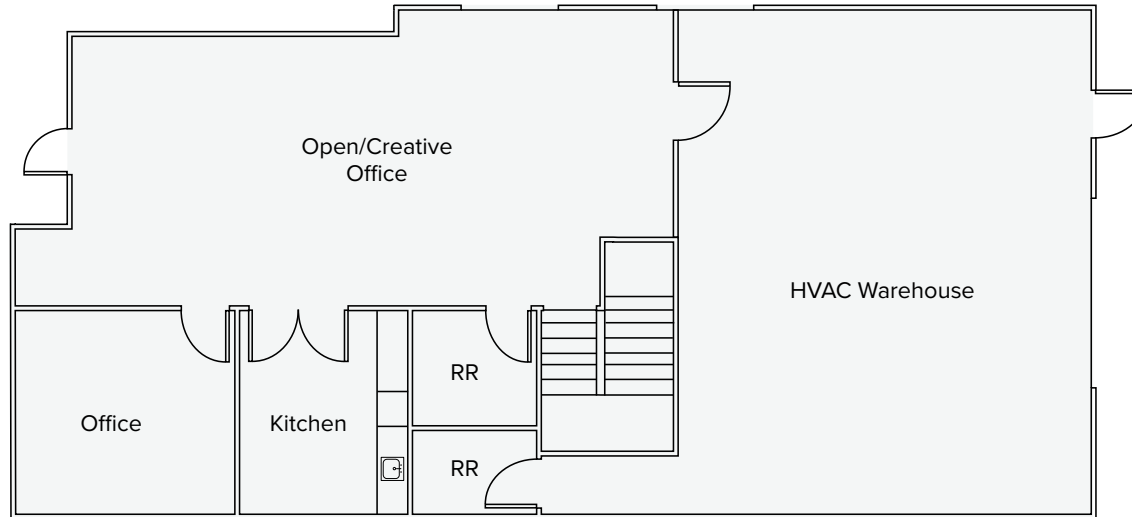
## PROPERTY HIGHLIGHTS

- 3,429 SF condo available
- Year Built 2007
- Corner unit with extensive glassline
- High end creative office improvements
- 70% office, 30% HVAC/insulated warehouse
- .6/2000 fire sprinklers (high hazard)
- 5 private offices, large kitchen/breakroom,
- 2 restrooms and open office areas
- 200a/120-208v 3p
- 22' clear height
- Electric Oversized Rollup Door
- Floor to Ceiling Glass Offices
- Fiber Internet Service
- Office Furniture Available
- Natural Gas
- **Lease Rate: \$1.75 PSF**

For more information, please contact:

**David M. Steffy** | 760.845.6307 | [dsteffy@palomarcommercial.com](mailto:dsteffy@palomarcommercial.com) | CA License 00902739

1st Floor



2nd Floor

