

RANCHO PACIFICA CENTER

15970 BERNARDO CENTER DRIVE, SAN DIEGO, CALIFORNIA 92127



BRIAN MULVANEY, SIOR, CCIM
Senior Vice President, Partner
Lic. #00938944 | 858.458.3372
bmulvaney@voitco.com

JOSH WEST, SIOR
Senior Vice President, Partner
Lic. #01923375 | 858.458.3358
jwest@voitco.com

DANNY ROGERS
Associate
Lic #02194441 | 858.458.3316
drogers@voitco.com

Voit
REAL ESTATE SERVICES

MULVANEY SIOR
COMMERCIAL ALLIANCE 



Excellent I-15 Access



Premier Rancho Bernardo Location



Building Signage



Highly Functional Flex/R&D Space

Highly Desirable Central Location on Bernardo Center Drive

Walking distance to countless services, restaurants, shops, etc.

Access to I-15, HWY 56, Rancho Santa Fe/ Fairbanks Ranch



RANCHO PACIFICA CENTER

FLOOR PLANS

LOCATION: 15970 Bernardo Center Drive

SUITE SIZE: ±11,250 SF

PARKING: 19 Spaces

ZONING: IP-2-1

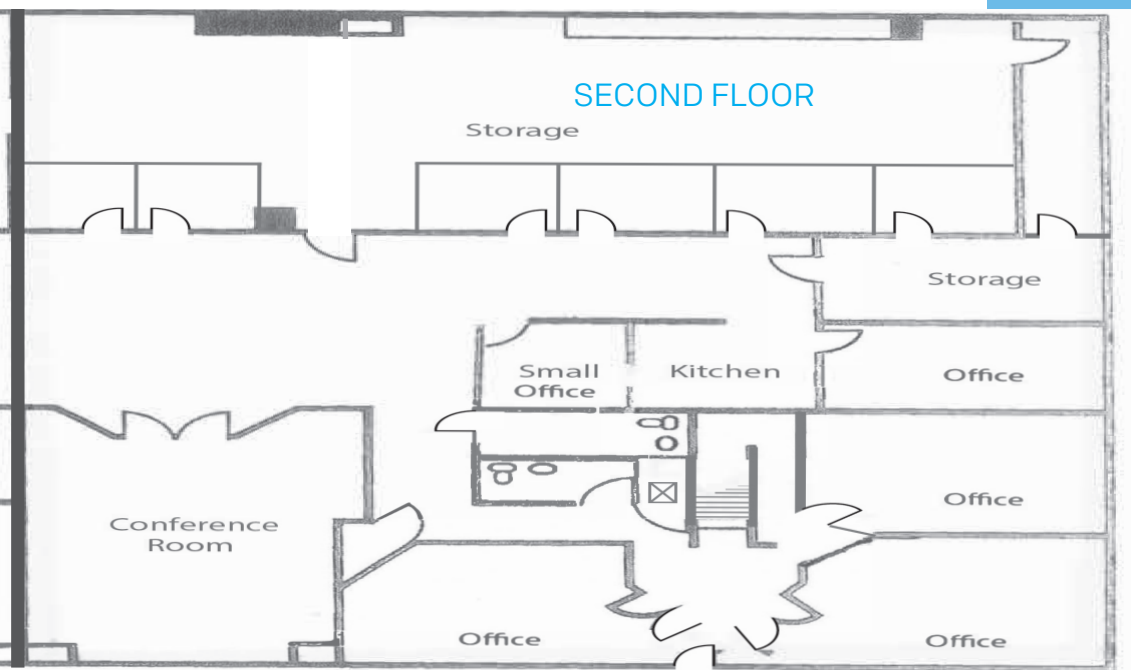
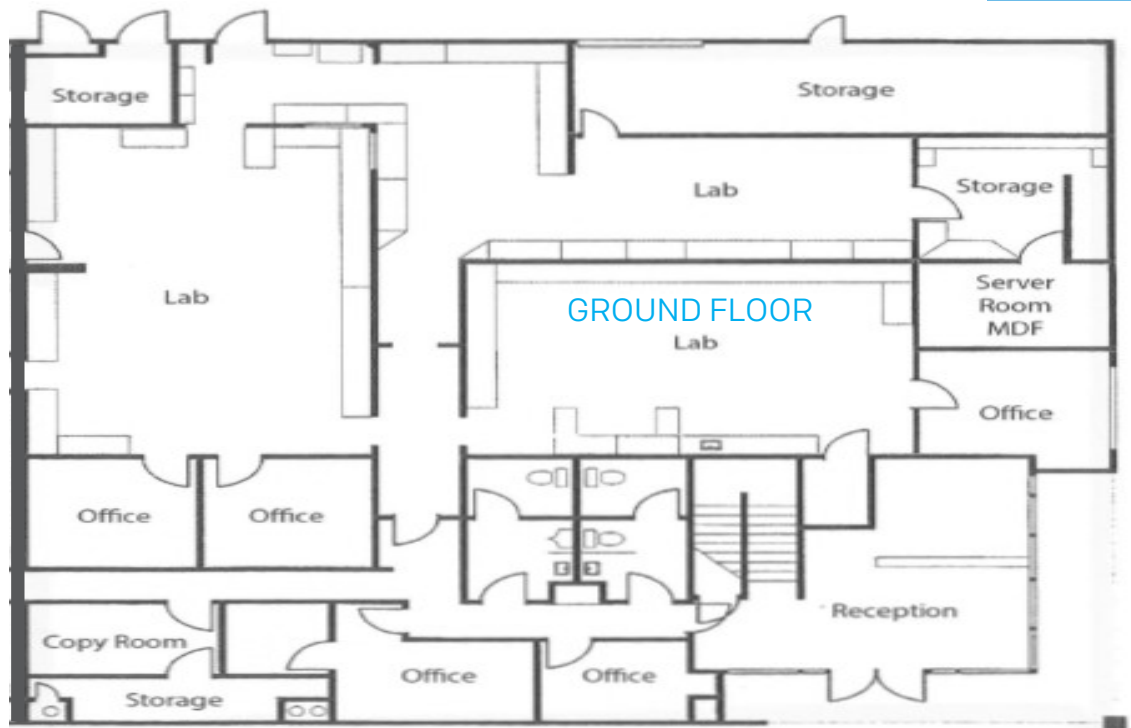
YEAR BUILT: 1990

RATE: \$1.40 NNN/ PSF/ Month
(NNN's estimated at ±\$0.35 PSF/Mo)

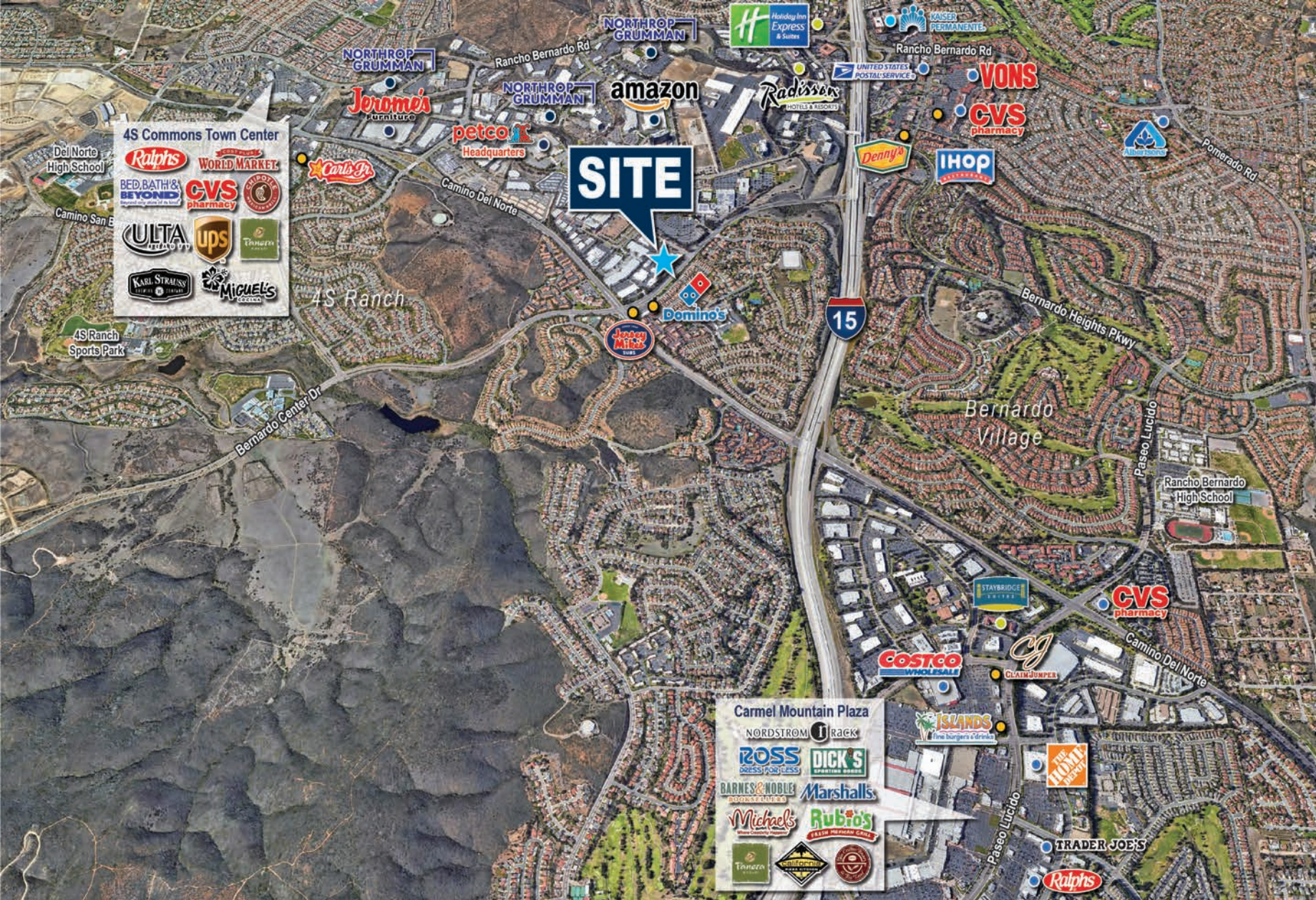
SALE PRICE: Call for Pricing

LOADING: One(1) Grade Level Door

- NOTES:
- Available Now
 - Flexible Lease Term
 - Office and Lab Space
 - Currently Medical/Contact Lens Manufacturing Facility



AERIAL



RANCHO PACIFICA CENTER

15970 BERNARDO CENTER DRIVE, SAN DIEGO, CALIFORNIA 92127



BRIAN MULVANEY, SIOR, CCIM

Senior Vice President, Partner
Lic. #00938944 | 858.458.3372
bmulvaney@voitco.com

JOSH WEST SIOR

Senior Vice President, Partner
Lic. #01923375 | 858.458.3358
jwest@voitco.com

DANNY ROGERS

Associate
Lic #02194441 | 858.458.3316
drogers@voitco.com

4180 La Jolla Village Drive, Suite 100, La Jolla, CA 92037 • 858.453.0505 • 858.408.3976 Fax • Lic #01991785 | www.voitco.com

Licensed as Real Estate Salespersons by the DRE. The information contained herein has been obtained from sources we deem reliable. While we have no reason to doubt its accuracy, we do not guarantee it. ©2024 Voit Real Estate Services, Inc. All Rights Reserved.

Voit
REAL ESTATE SERVICES

MULVANEY SIOR
COMMERCIAL
ALLIANCE  