

4511 HILLSBOROUGH ROAD, DURHAM, NC 27705

Industrial Flex Space in Durham For Lease

\$20 / SF

PICKETT
SPROUSE
COMMERCIAL
REAL ESTATE



A WEST & WOODALL COMPANY

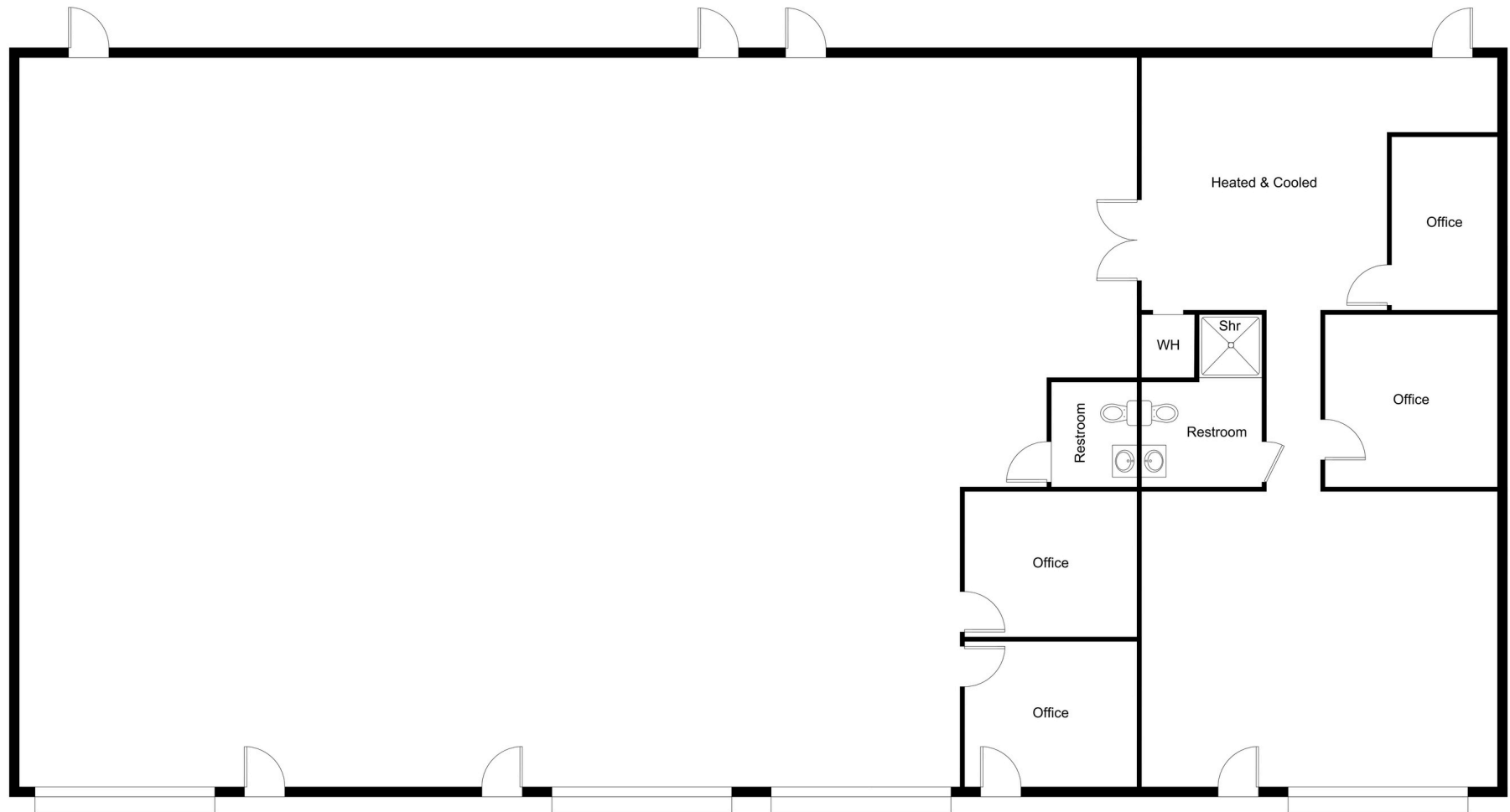
Property Details



| | |
|----------------------|---|
| Lease Rate | \$20/SF |
| Total Square Footage | ±5,000 ±1,400 (Office) ±3,600 (Warehouse) |
| Ceiling Height | 16 feet |
| Lot Size | 1.59 Acres |
| Zoning | IL (Industrial Light) |
| Year Built | 1997 |
| Roll-Up Doors | 4 (14 feet) |

Flexible industrial space with multiple warehouse and office options in fantastic, secure location. Building offers several roll-up doors and ample parking. Located on a heavily traveled corridor, this property provides excellent visibility for trade and business service offices. *Automotive businesses not permitted.*

Floorplan







Durham Garden Center

Brassfield Self Storage

Prime Life Fibers Inc.

Euroclassics Ltd. Bosch Car Service

The Digital Chassis

Durham Mechanical Services

SiteOne Landscape Supply

Subject

Lee's 24-hr Towing

Hillsborough Road

Lee Air Conditioning

Four Seasons Auto Care

Neal Road

Dealers Supply Company

Lee Air
Conditioning

Subject

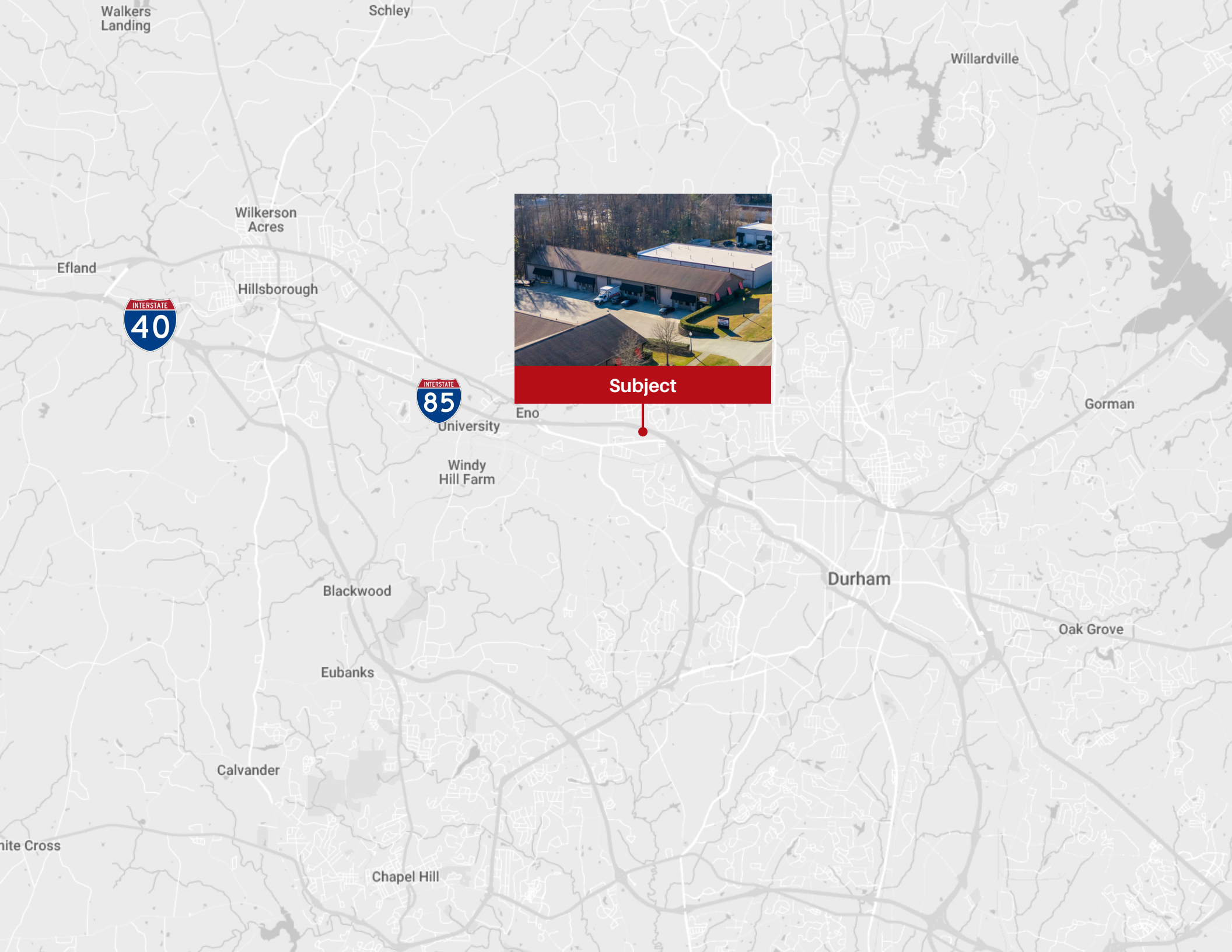
Durham
Mechanical
Services

Four Seasons
Auto Care

PROPERTY AVAILABLE
Contact Listing Broker
For More Information

Neal Road

Hillsborough Road



Subject



Contact Us

Mark Micol
mark.micol@pickettsprouse.com
(919) 287-3048

Noah Morrell
noah@pickettsprouse.com
(919) 530-0481

pickettsprouse.com

