

AVAILABLE

16001 Boyle Lane
NE Corner Hwy 41 & Baseline Road
 EVANSVILLE, IN 47725



- | | | | |
|--------------------------------|---|----------------------------|--|
| • Lease Price: | \$10 / SF | • Ceiling Height: | 24 ft to Center |
| • NN Charges Estimated: | \$1.67 / SF | • Year Built: | 2023 |
| • Available SF: | 26,000 SF | • Roof: | Metal |
| • Office SF: | 1,250 SF | • Floor: | Radiant Heat Concrete |
| • Zoning: | C-4 | • Restrooms: | 2 |
| • Drive-in Doors : | 19 ct 16 H x 14 W
1 ct 10 H x 10 W | • Current Use: | Vacant |
| • Docks: | Conversion Available | • Showing: | Contact Listing Broker |
| • # of Parking Spaces: | Ample | • Location: | Just off US Hwy 41 |
| | | • Driving Distance: | 3 miles to I-64
5 miles to I-69 |

Stop light location on Hwy 41 North. Excellent location for trucking uses. Brand new construction. Overhead doors can be converted to docks if necessary. 1 acre is included, but could be expanded to 6 acres. Ideal set up for service center.

For More Information, Contact:

Aaron Kendall, CCIM

Direct: 812.480.8100

Office: 812.473.6677

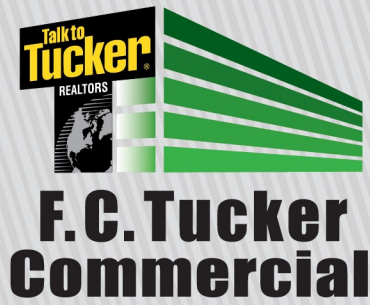
aaronkendall@fctuckercommercial.com



7820 Eagle Crest Blvd. Suite 200
 Evansville, IN • 47715
 812-473-6677 • Fax: 812-473-6684

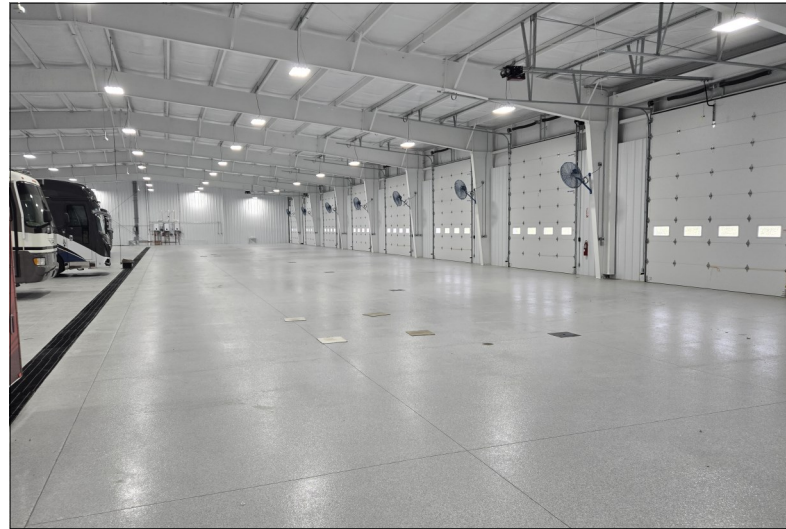


FCTuckerCommercial.com



AVAILABLE

16001 Boyle Lane
NE Corner Hwy 41 & Baseline Road
EVANSVILLE, IN 47725



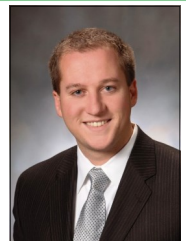
For More Information, Contact:

Aaron Kendall, CCIM

Direct: 812.480.8100

Office: 812.473.6677

aaronkendall@fctuckercommercial.com



7820 Eagle Crest Blvd. Suite 200
Evansville, IN • 47715
812-473-6677 • Fax: 812-473-6684



FCTuckerCommercial.com

The information contained herein was obtained from sources we consider reliable. We cannot be responsible, however, for errors, omissions, prior sale, and withdrawal from the market or change in price.