

FOR SUBLEASE
240 DIVIDEND DRIVE SUITE 100
COPPELL, TX 75019



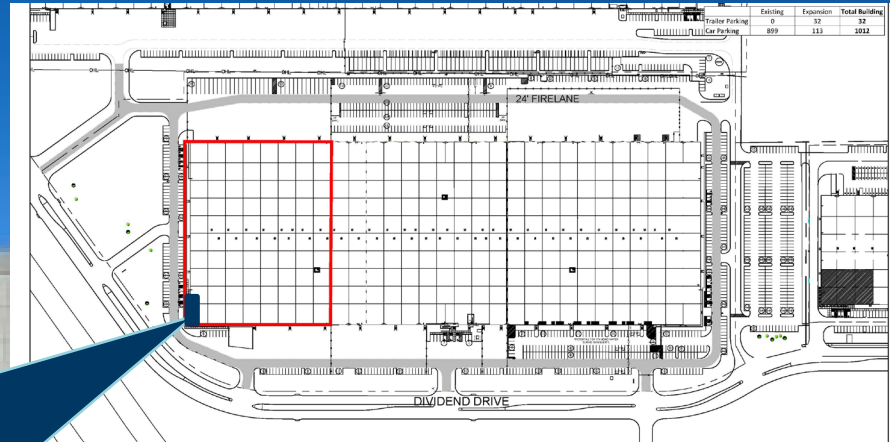
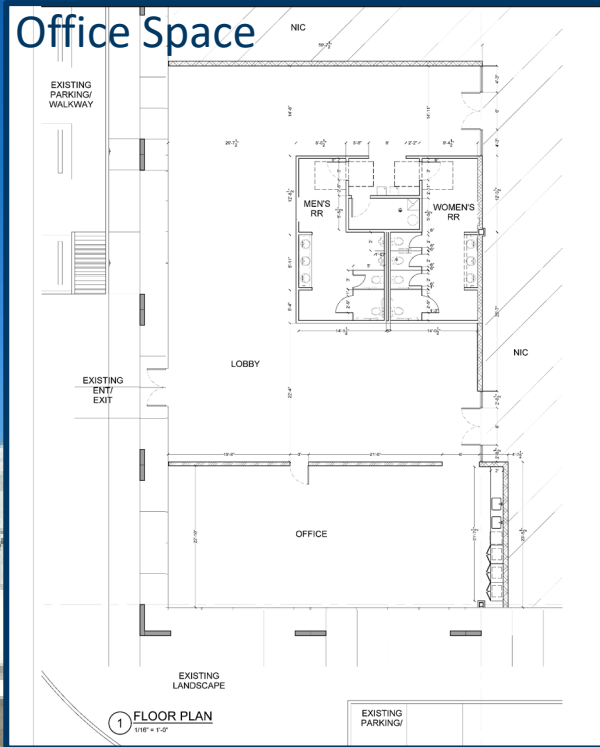
4,500 SF	32'	2007	41	96
APPROX. OFFICE SF	CLEAR HEIGHT	YEAR BUILT	TRAILER PARKS	CAR PARKS

210,550 TOTAL AVAILABLE SF
AVAILABLE 2024



240 DIVIDEND DRIVE SUITE 100

COPPELL, TX 75019



- Fenced North Truck Court
- 23 Dock-High Doors with 12 Levelers
- 6 Drive-In Doors
- ESFR Sprinklers
- 520' Cross Dock
- 50' x 50' Column Spacing

CONTACT:

MARK BECKER

Senior Director
+1 972 663 9757
mark.becker@cushwake.com

JAY BENNER

Senior Associate
+1 972 663 9739
jay.benner@cushwake.com



©2023 Cushman & Wakefield. All rights reserved. The information contained in this communication is strictly confidential. This information has been obtained from sources believed to be reliable but has not been verified. NO WARRANTY OR REPRESENTATION, EXPRESS OR IMPLIED, IS MADE AS TO THE CONDITION OF THE PROPERTY (OR PROPERTIES) REFERENCED HEREIN OR AS TO THE ACCURACY OR COMPLETENESS OF THE INFORMATION CONTAINED HEREIN, AND SAME IS SUBMITTED SUBJECT TO ERRORS, OMISSIONS, CHANGE OF PRICE, RENTAL OR OTHER CONDITIONS, WITHDRAWAL WITHOUT NOTICE, AND TO ANY SPECIAL LISTING CONDITIONS IMPOSED BY THE PROPERTY OWNER(S). ANY PROJECTIONS, OPINIONS OR ESTIMATES ARE SUBJECT TO UNCERTAINTY AND DO NOT SIGNIFY CURRENT OR FUTURE PROPERTY PERFORMANCE.