

CBRE



THE HISTORIC SANTA FE DEPOT

RESTAURANT FOR LEASE

349 Orange St, Redlands, CA

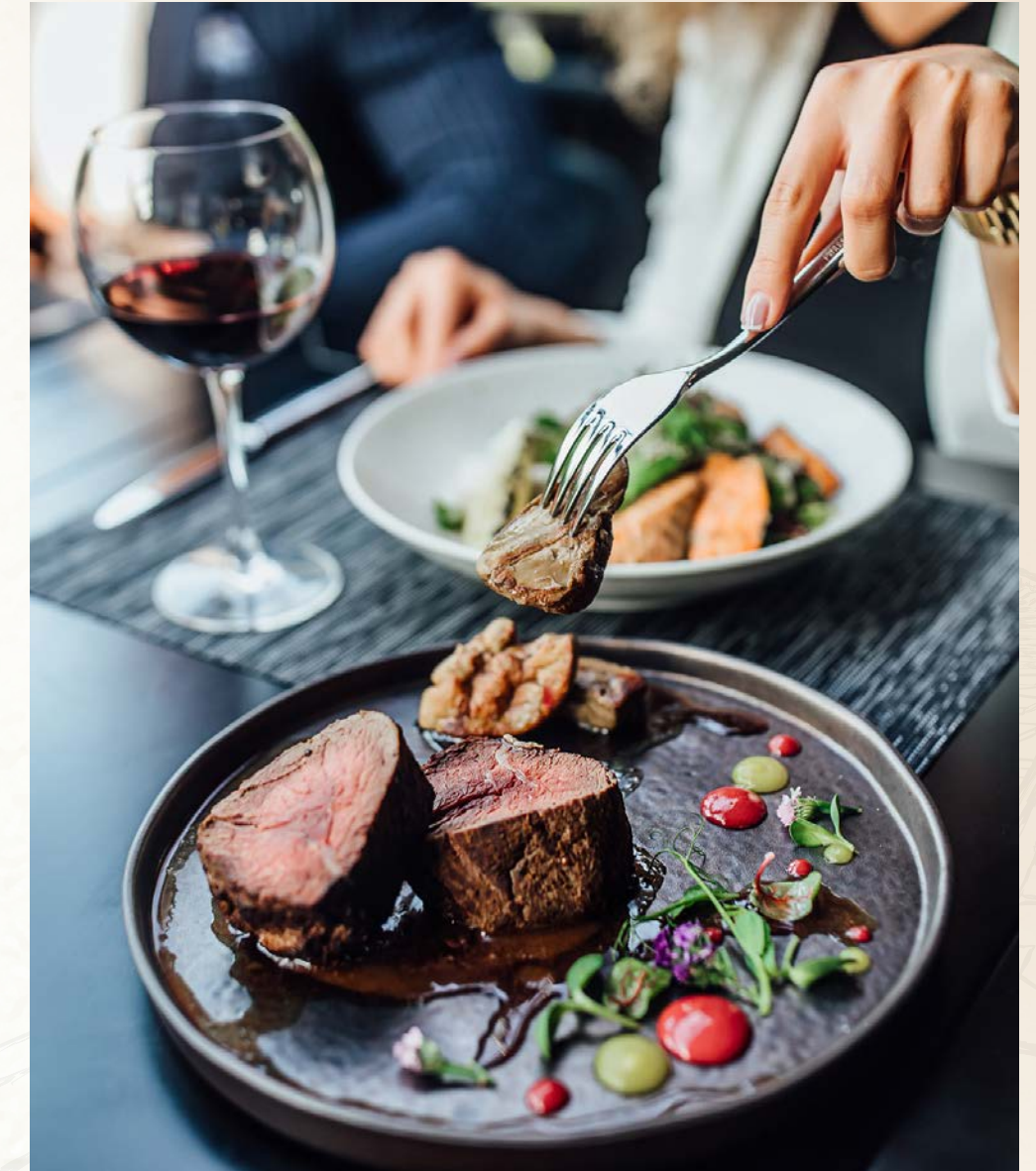
THE MOST HISTORIC BUILDING IN REDLANDS

We present an exciting opportunity for a restaurant tenant to join the most iconic dining destination in the Inland Empire. The Historic Santa Fe Depot has been a staple of the Redlands community and is ready for the next chapter in the rapidly-growing Downtown Redlands.

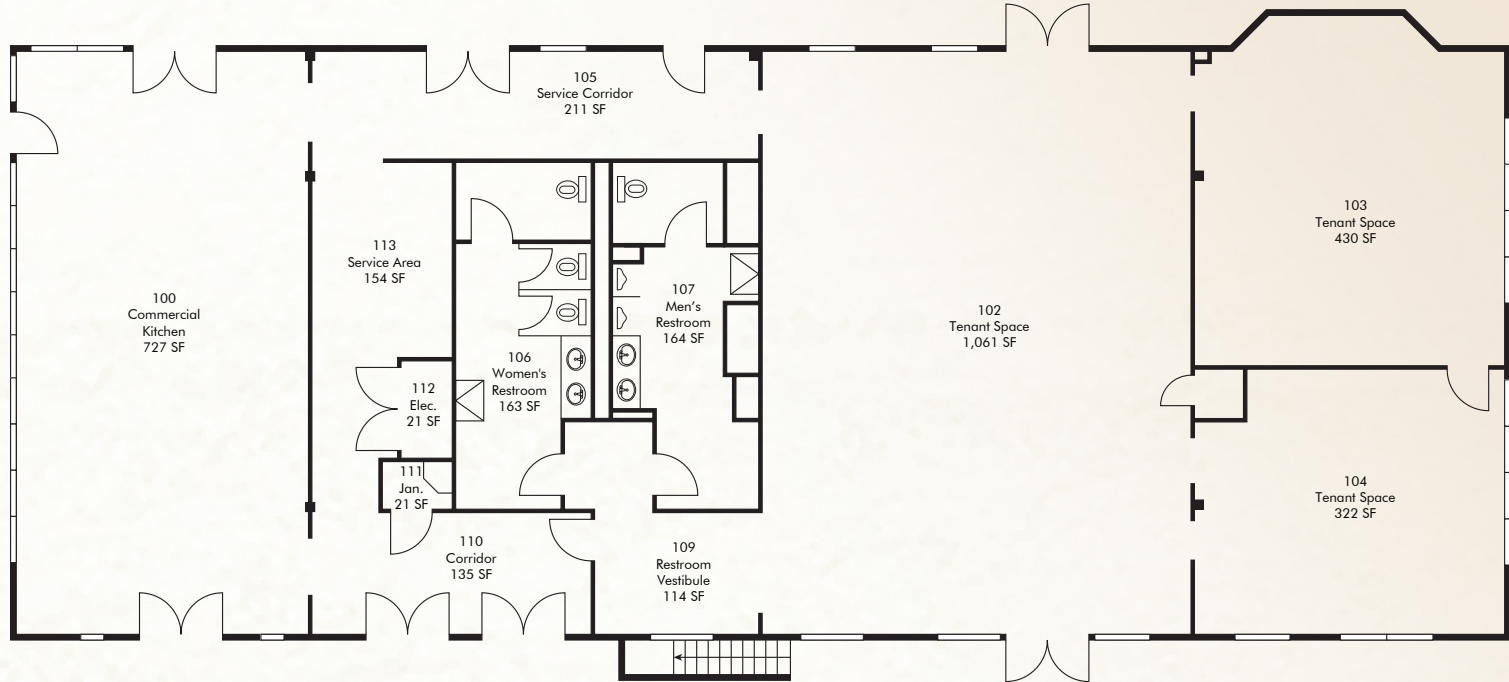


THE DETAILS

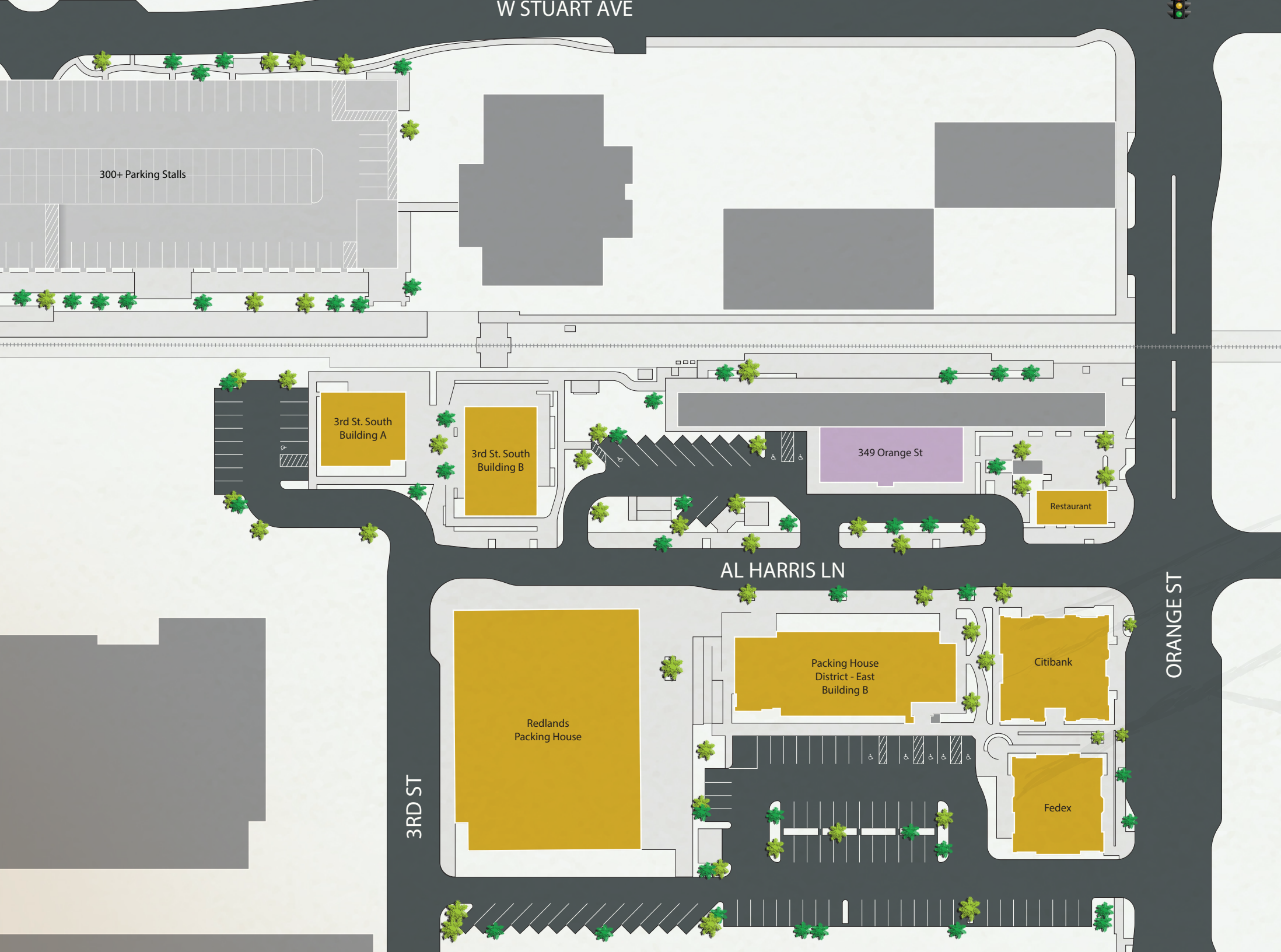
- | 3,766 SF Turnkey restaurant space available for lease in the historic Downtown Redlands Santa Fe Depot building.
- | Prime opportunity for a restaurant looking for an iconic, highly-recognized building.
- | Adjacent to the historic Redlands Metrolink station, easily accessible for locals and visitors alike.
- | Plenty of parking is available, with a short walk to a parking garage featuring over 300 parking stalls, as well as accessible street parking.
- | Experience the uniqueness and diversity of local and national dining and retail options that surround these buildings.



WELCOME TO DOWNTOWN REDLANDS



349 ORANGE ST - FLOOR PLAN



THE PACKING HOUSE DISTRICT

Originally built in the early 20th century as a hub for citrus packing houses, the district now showcases beautifully restored buildings that have been re-purposed into a dynamic community space.

The Packing House District offers a charming and inviting atmosphere, with its tree-lined streets, outdoor seating areas, and friendly community vibe. It's a place where people can come together, enjoy good food, explore unique shops, and soak in the cultural richness of Redlands.



| 2023 | 5 MINUTES | 10 MINUTES | 15 MINUTES |
|--------------------|-----------|------------|------------|
| POPULATION | 36,203 | 122,625 | 362,918 |
| HOUSEHOLDS | 13,739 | 43,326 | 115,554 |
| DAYTIME POPULATION | 48,822 | 164,004 | 415,571 |

\$119,194

Average Household Income (10 Minutes)

43%

Bachelor's Degree or Higher (10 Minutes)

6,000

Employees at ESRI, GIS Software Company Headquartered in Redlands

\$4,451

Average Household Eating Out Spending per Year in Redlands (source: City of Redlands)





INTERESTED? CONTACT US

MICHAEL DAY

Lic. 01362830

+1 909 418 2207

michael.day@cbre.com

BRANDON BEAUCHEMIN

Lic. 01338753

+1 909 418 2000

brandon.beauchemin@cbre.com

© 2025 CBRE, Inc. All rights reserved. This information has been obtained from reliable sources but has not been verified for accuracy or completeness. CBRE, Inc. makes no guarantee, representation, or warranty and accepts no responsibility or liability for the accuracy, completeness, or reliability of the information contained herein. You should conduct a careful, independent investigation of the property and verify all information. Any reliance on this information is solely at your own risk. CBRE and the CBRE logo are service marks of CBRE, Inc. All other marks displayed on this document are the property of their respective owners, and the use of such marks does not imply any affiliation with or endorsement of CBRE. Photos herein are the property of their respective owners. Use of these images without the express written consent of the owner is prohibited.



CBRE