

FOR LEASE

16840 Alisal Ct | San Lorenzo, CA



FREE STANDING INDUSTRIAL BUILDING

Mike Tanzillo

MTC Commercial Real Estate Brokerage

Broker

(510) 889-9157

mtcre@sbcglobal.net

Lic: 00688066

Paul Mader, CCIM

MTC Commercial

Broker Associate

(510) 206-3156

paul@paulmaderccim.com

Lic: 00795784

MTC

THE SPACE

Location	16840 Alisal Ct San Lorenzo, CA 94580
County	Alameda
Cross Street	Lewelling
Square Feet	6181
Annual Rent PSF	\$0.81
Lease Type	Industrial Gross

HIGHLIGHTS

- 5,681 +/- Sq. Ft. plus 500 +/- Sq. Ft. Second Story Office or Breakroom with restroom, shower and sink counter
- 3 Grade level doors: 13'x12', 8'x8' and 5'x8'
- 2 ground floor breakrooms, office and restrooms
- 400 amp/240 volt 3 phase (interested party to verify)
- 10' and 16' clear height
- Covered overhang
- Close to interstate 238

POPULATION

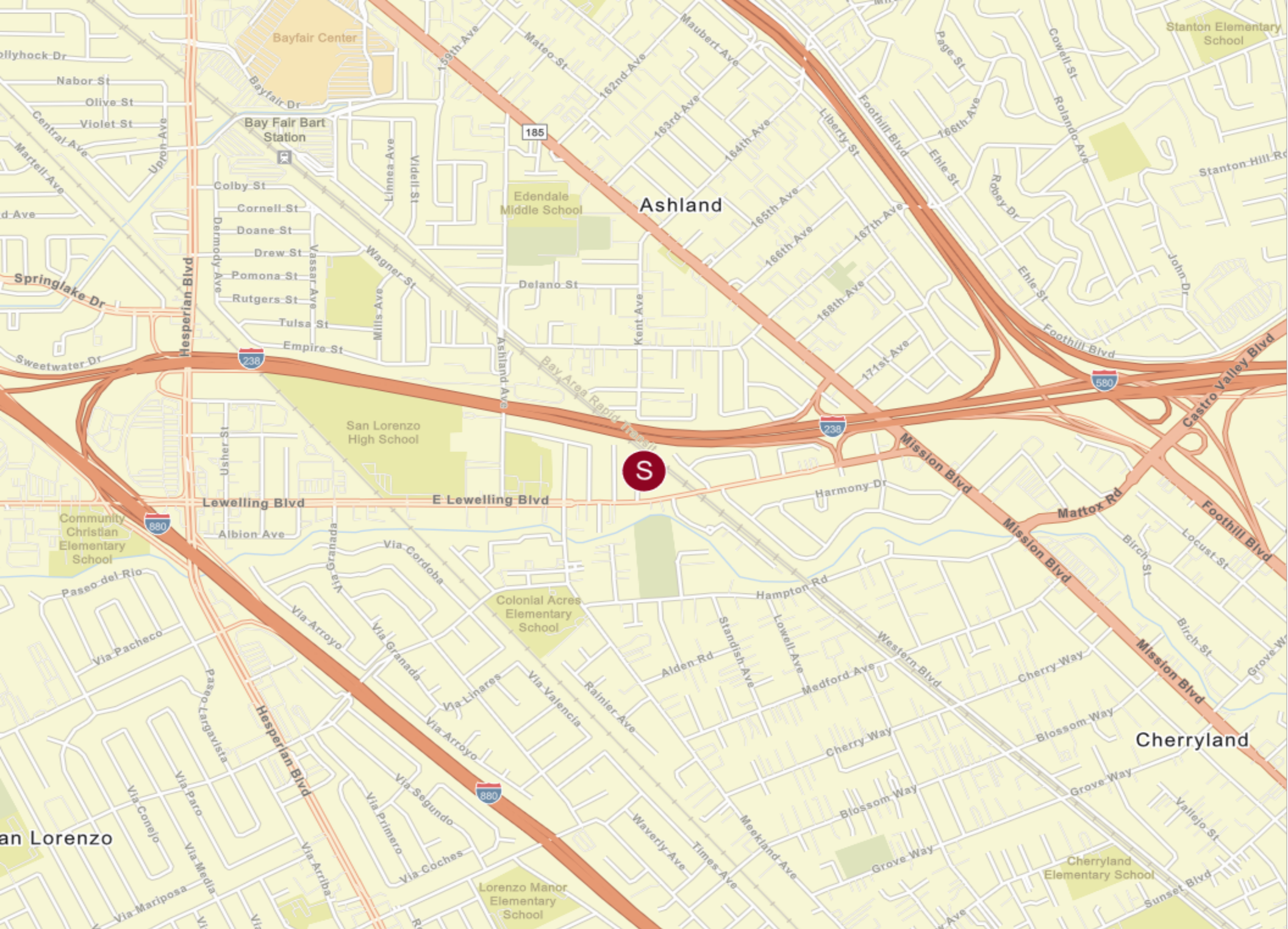
1.00 MILE	3.00 MILE	5.00 MILE
34,640	221,906	390,443

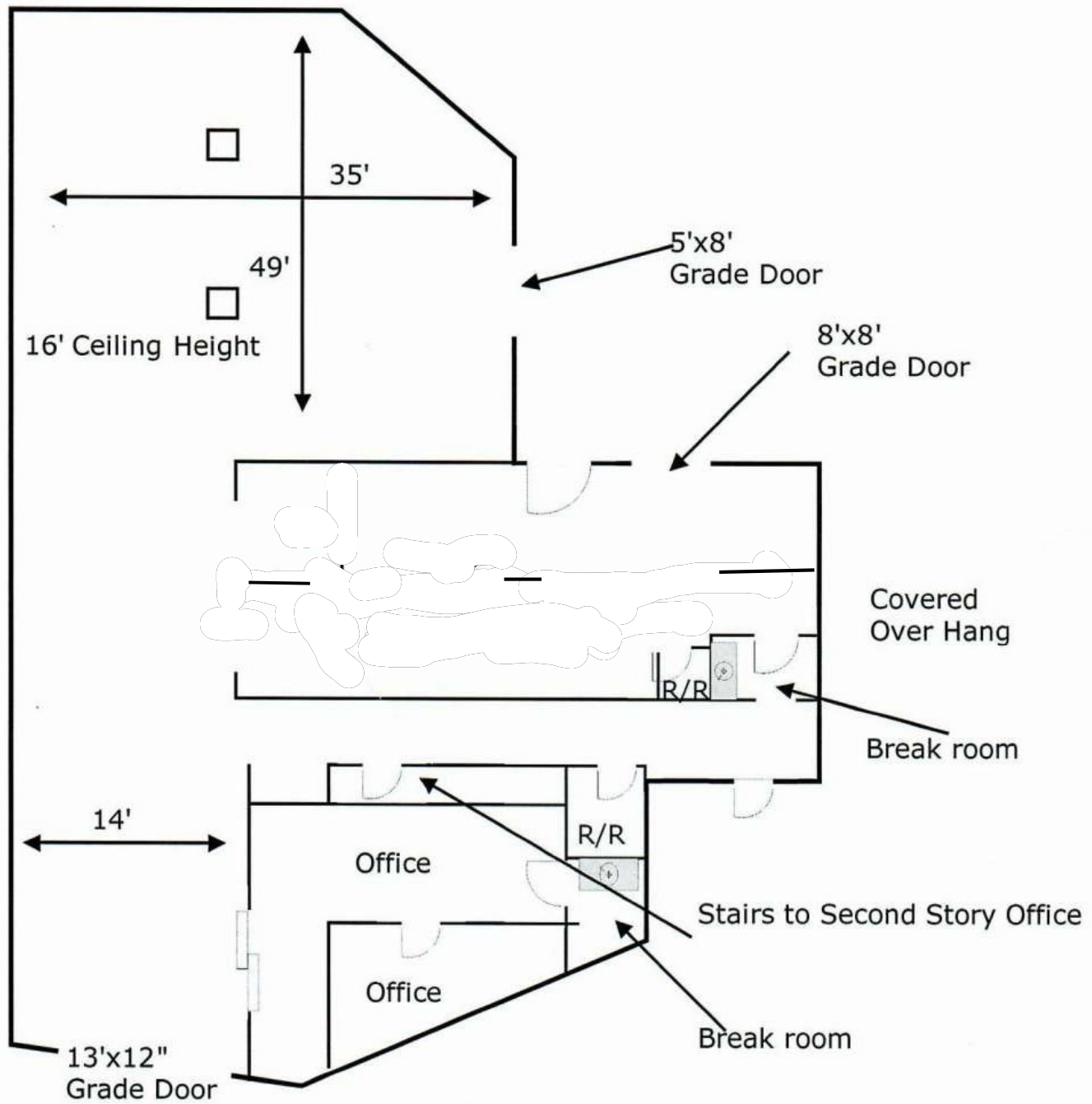
AVERAGE HOUSEHOLD INCOME

1.00 MILE	3.00 MILE	5.00 MILE
\$109,047	\$134,645	\$141,243

NUMBER OF HOUSEHOLDS

1.00 MILE	3.00 MILE	5.00 MILE
10,873	73,521	125,758





For Reference Only Not to Scale

For Lease

CONFIDENTIALITY and DISCLAIMER

The information contained in the following offering memorandum is proprietary and strictly confidential. It is intended to be reviewed only by the party receiving it from MTC Commercial Real Estate Brokerage and it should not be made available to any other person or entity without the written consent of MTC Commercial Real Estate Brokerage .

By taking possession of and reviewing the information contained herein the recipient agrees to hold and treat all such information in the strictest confidence. The recipient further agrees that recipient will not photocopy or duplicate any part of the offering memorandum. If you have no interest in the subject property, please promptly return this offering memorandum to MTC Commercial Real Estate Brokerage . This offering memorandum has been prepared to provide summary, unverified financial and physical information to prospective tenants, and to establish only a preliminary level of interest in the subject property.

The information contained herein is not a substitute for a thorough due diligence investigation. MTC Commercial Real Estate Brokerage has not made any investigation, and makes no warranty or representation with respect to the income or expenses for the subject property, the future projected financial performance of the property, the size and square footage of the property and improvements, the presence or absence of contaminating substances, PCBs or asbestos, the compliance with local, state and federal regulations, the physical condition of the improvements thereon, or financial condition or business prospects of any tenant, or any tenant's plans or intentions to continue its occupancy of the subject property.

The information contained in this offering memorandum has been obtained from sources we believe reliable; however, MTC Commercial Real Estate Brokerage has not verified, and will not verify, any of the information contained herein, nor has MTC Commercial Real Estate Brokerage conducted any investigation regarding these matters and makes no warranty or representation whatsoever regarding the accuracy or completeness of the information provided. All potential buyers must take appropriate measures to verify all of the information set forth herein. Prospective buyers shall be responsible for their costs and expenses of investigating the subject property.

Exclusively Marketed by:

Mike Tanzillo

MTC Commercial Real Estate Brokerage
Broker
(510) 889-9157
mtcre@sbcglobal.net
Lic: 00688066

Paul Mader, CCIM

MTC Commercial
Broker Associate
(510) 206-3156
paul@paulmaderccim.com
Lic: 00795784

The MTC logo consists of the letters "MTC" in a white, serif font, centered within a dark blue square.