

FOR SALE OR LEASE

21,588 sf, one-story
building on 3.05 acres

645

ALPHA DRIVE

PITTSBURGH, PA 15238



AVISON
YOUNG

Avison Young - Pittsburgh
4 PPG Place, Suite 300
Pittsburgh, PA 15222



Property overview



For Sale:
\$2,050,000



21,588 sf, one-story building
on 3.05 acres of land



Located in RIDC Park
in O'Hara Township



Reception area, sizeable training
room, and spacious kitchen



Plenty of on-site parking:
92 spots



Ideal for small headquarters office



Fully ADA compliant



Occupancy available within
90-120 days



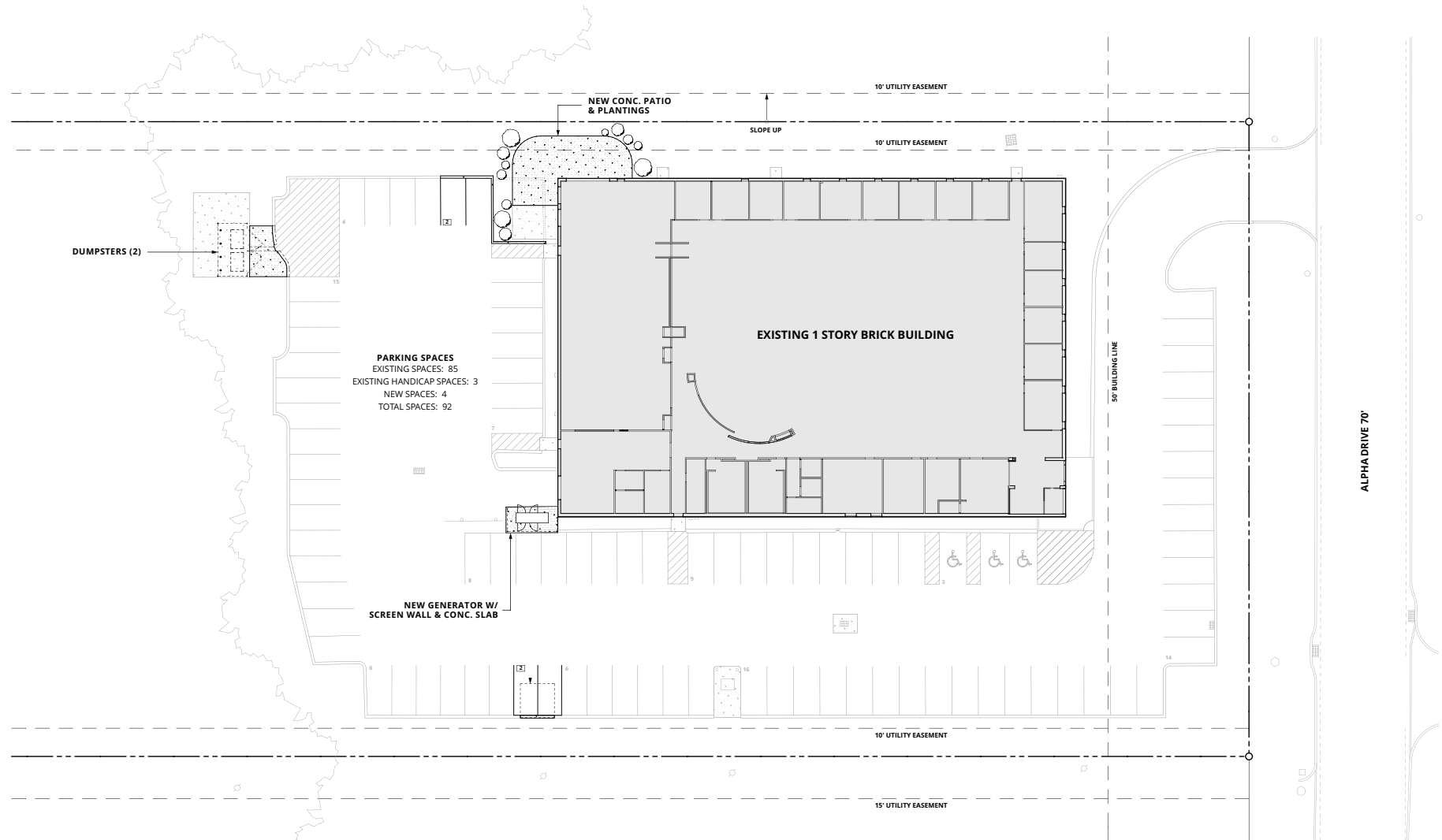
Newly renovated with a large
floor plan, conference rooms,
and private offices



Easy access to Route 28
(North and South) and
PA Turnpike

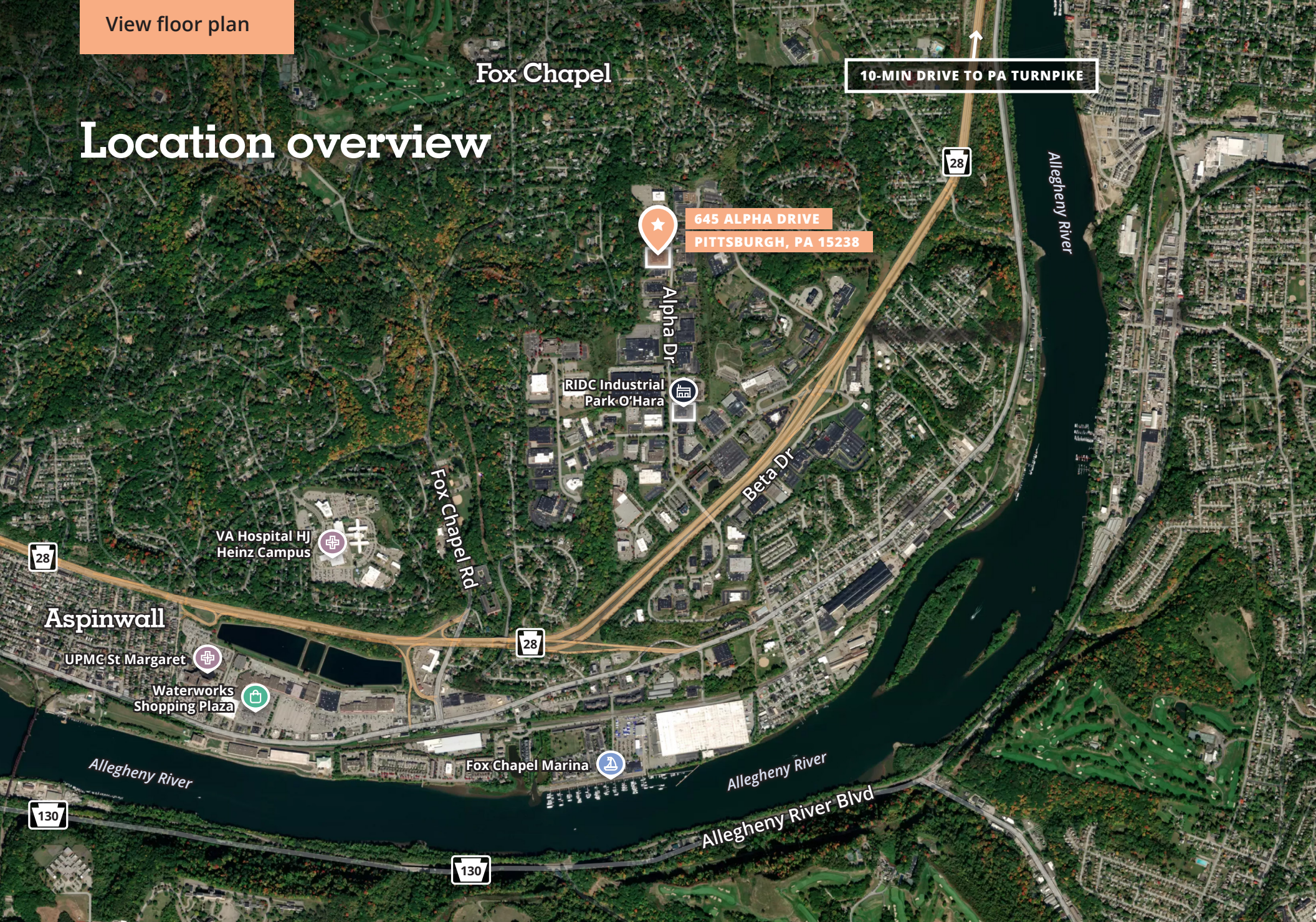
Existing floor plan

Gross floor area:
21,588 sf



View floor plan

Location overview





BRAD TOTTEN, CCIM

Principal and Managing Director

+1 412 944 2132

brad.totten@avisonyoung.com

MICHAEL DOWNEY, SIOR

Principal

+1 412 944 2135

michael.downey@avisonyoung.com

MAGGIE MCGINLEY

Associate

+1 412 944 2137

maggie.mcginley@avisonyoung.com

Visit us online
avisonyoung.com

©2025 Avison Young Commercial Real Estate Services, LP, Commercial Real Estate Agency. All rights reserved.

E. & O.E.: The information contained herein was obtained from sources which we deem reliable and, while thought to be correct, is not guaranteed by Avison Young.

