



RARE INDUSTRIAL SPACE IN HAMPDEN / WOODBERRY  
FOR LEASE

1700 UNION AVENUE, BALTIMORE, MD 21211



RARE INDUSTRIAL SPACE 6,837 SF IN HAMPDEN / WOODBERRY

MICHAEL BENDER  
C: 410.935.9408  
E: mbender@agmcommercial.com

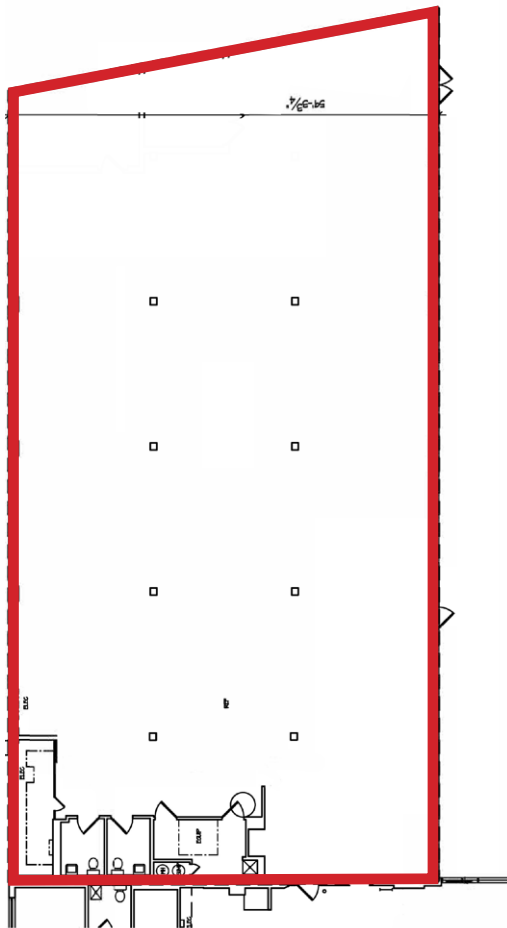
DOUGLAS KAUFMAN  
C: 410-952-3290  
E: dkaufman@agmcommercial.com

AGM COMMERCIAL REAL ESTATE ADVISORS  
5900 Wilmary Lane  
Baltimore, MD 21210



# PROPERTY OVERVIEW

- 2 drive-in doors (one is 12' X 14')
- Heavy power: 400 amps of 3 phase 120/208
- Visibility from I-83
- Floor drains
- 1 block to Light Rail. Between Falls Road and Coldspring Lane on I-83
- 16' clear height
- Free parking on site.



MICHAEL BENDER  
C: 410.935.9408  
E: mbender@agmcommercial.com

DOUGLAS KAUFMAN  
C: 410-952-3290  
E: dkaufman@agmcommercial.com

AGM COMMERCIAL REAL ESTATE ADVISORS  
5900 Wilmary Lane  
Baltimore, MD 21210

# RETAIL MAP



MICHAEL BENDER  
C: 410.935.9408  
E: mbender@agmcommercial.com

DOUGLAS KAUFMAN  
C: 410-952-3290  
E: dkaufman@agmcommercial.com

AGM COMMERCIAL REAL ESTATE ADVISORS  
5900 Wilmary Lane  
Baltimore, MD 21210