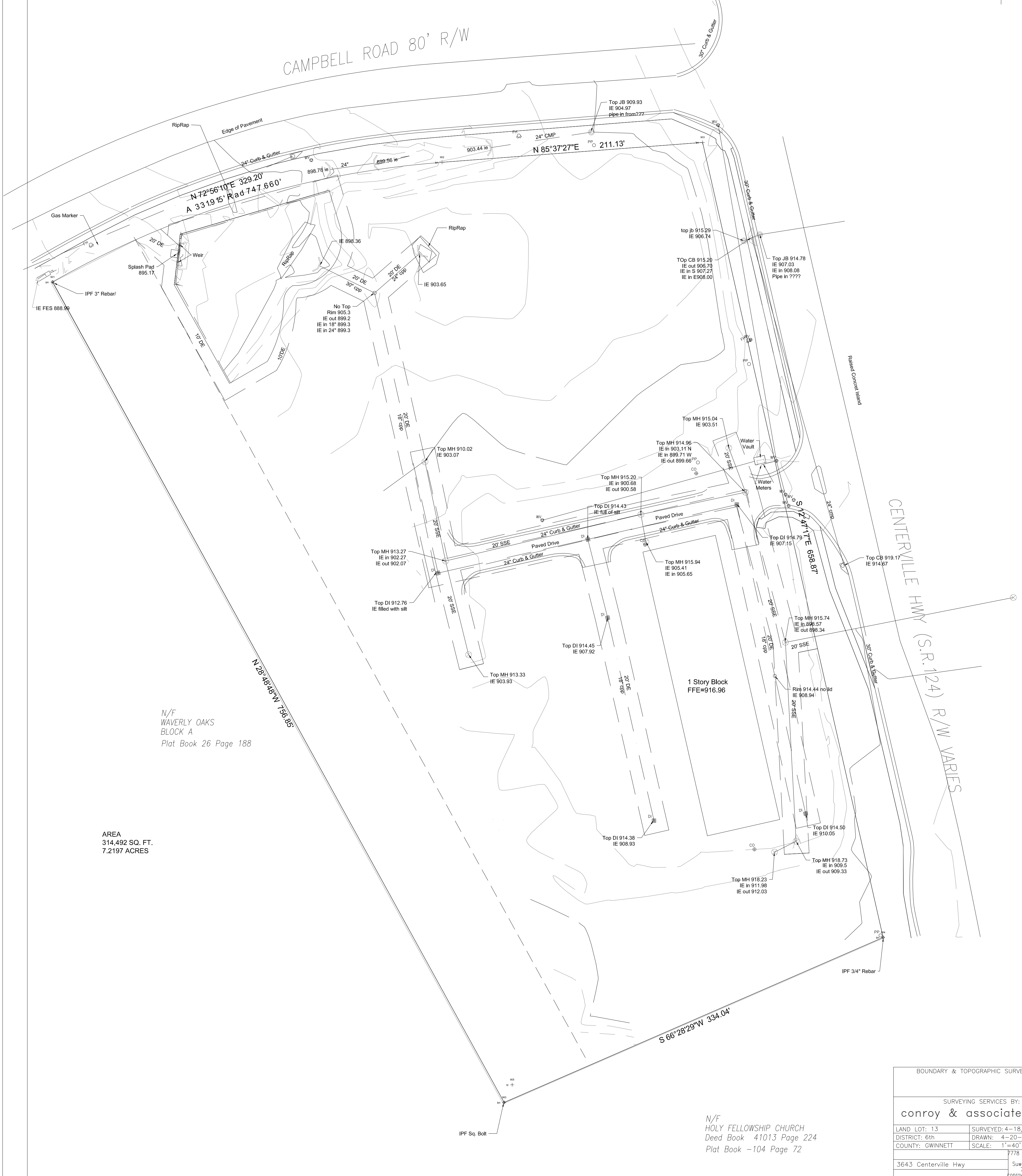
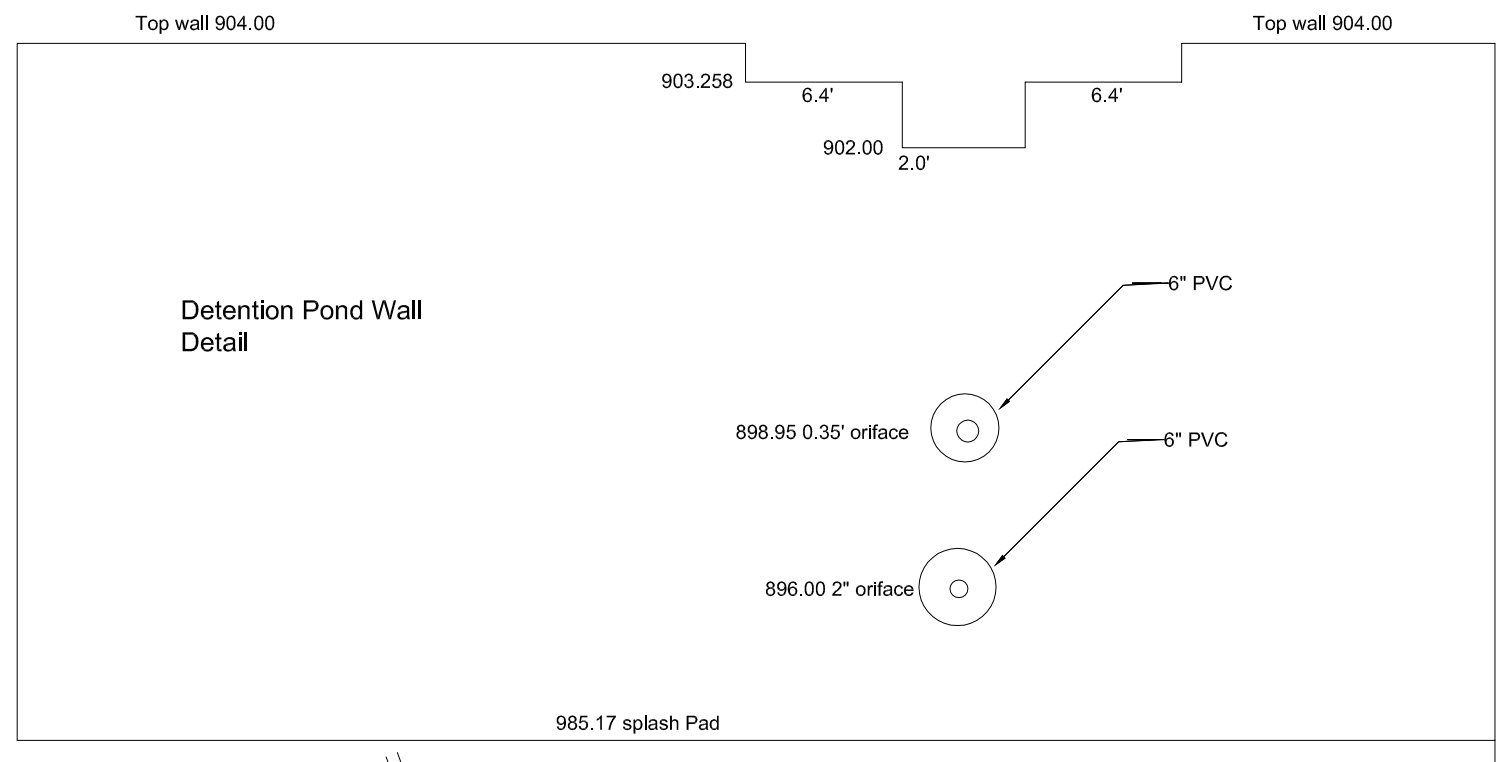


LEGEND

- IPF IRON PIN FOUND
- RB REBAR
- OT OPEN TOP
- HW HEADWALL
- JB JUNCTION BOX
- DI DROP INLET
- YI YARD INLET
- CMP CORRUGATED METAL PIPE
- I.E. INVERT ELEVATION
- DWCB DOUBLE WING CATCH BASIN
- SSMH SANITARY SEWER MANHOLE
- D.E. DRAINAGE EASEMENT
- S.S.E. SANITARY SEWER EASEMENT
- FH FIRE HYDRANT
- WV WATER VALVE
- PP POWER POLE
- B.L. BUILDING SETBACK LINE

NOTES:
 ALL IRON PINS INDICATED AS SET (IPS) ARE 1/2" REBAR RODS.
 THIS SITE IS NOT LOCATED WITHIN 500 FEET OF A NATIONAL GEODETIC SURVEY MONUMENT.
 FIELD INFORMATION FOR THIS SURVEY WAS OBTAINED WITH A 5 SECOND THEODOLITE AND AN ELECTRONIC DISTANCE METER.
 THE FIELD DATA UPON WHICH THIS MAP OR PLAT IS BASED HAS A CLOSURE PRECISION OF ONE FOOT IN 36,275 FEET AND AN ANGULAR ERROR OF 3 SECONDS PER ANGLE POINT AND WAS ADJUSTED BY LEAST SQUARES.
 THIS MAP OR PLAT HAS BEEN CALCULATED FOR CLOSURES AND IS FOUND TO BE ACCURATE WITHIN ONE FOOT IN 176,329 FEET.
 THIS PROPERTY DOES NOT LIE WITHIN A FEDERAL FLOOD HAZARD AREA AS PER PANEL NO. not available



N/F
 WAVERLY OAKS
 BLOCK A
 Plat Book 26 Page 188

AREA
 314.492 SQ. FT.
 7.2197 ACRES

N/F
 HOLY FELLOWSHIP CHURCH
 Deed Book 41013 Page 224
 Plat Book -104 Page 72

BOUNDARY & TOPOGRAPHIC SURVEY FOR:	
SURVEYING SERVICES BY: conroy & associates, P.C.	
LAND LOT: 13	SURVEYED: 4-18/19-16
DISTRICT: 6th	DRAWN: 4-20-16 BY: DC
COUNTY: GWINNETT	SCALE: 1"=40'
3643 Centerville Hwy Suite 165 Suwanee, GA 30024 770.831.3301 conroyssoc@gmail.com	
AQ056	