



**MARKETING FLYER**

# **650 KOMAS**

UNIVERSITY OF UTAH RESEARCH PARK | SALT LAKE CITY, UT

**SPENCER WIXOM**

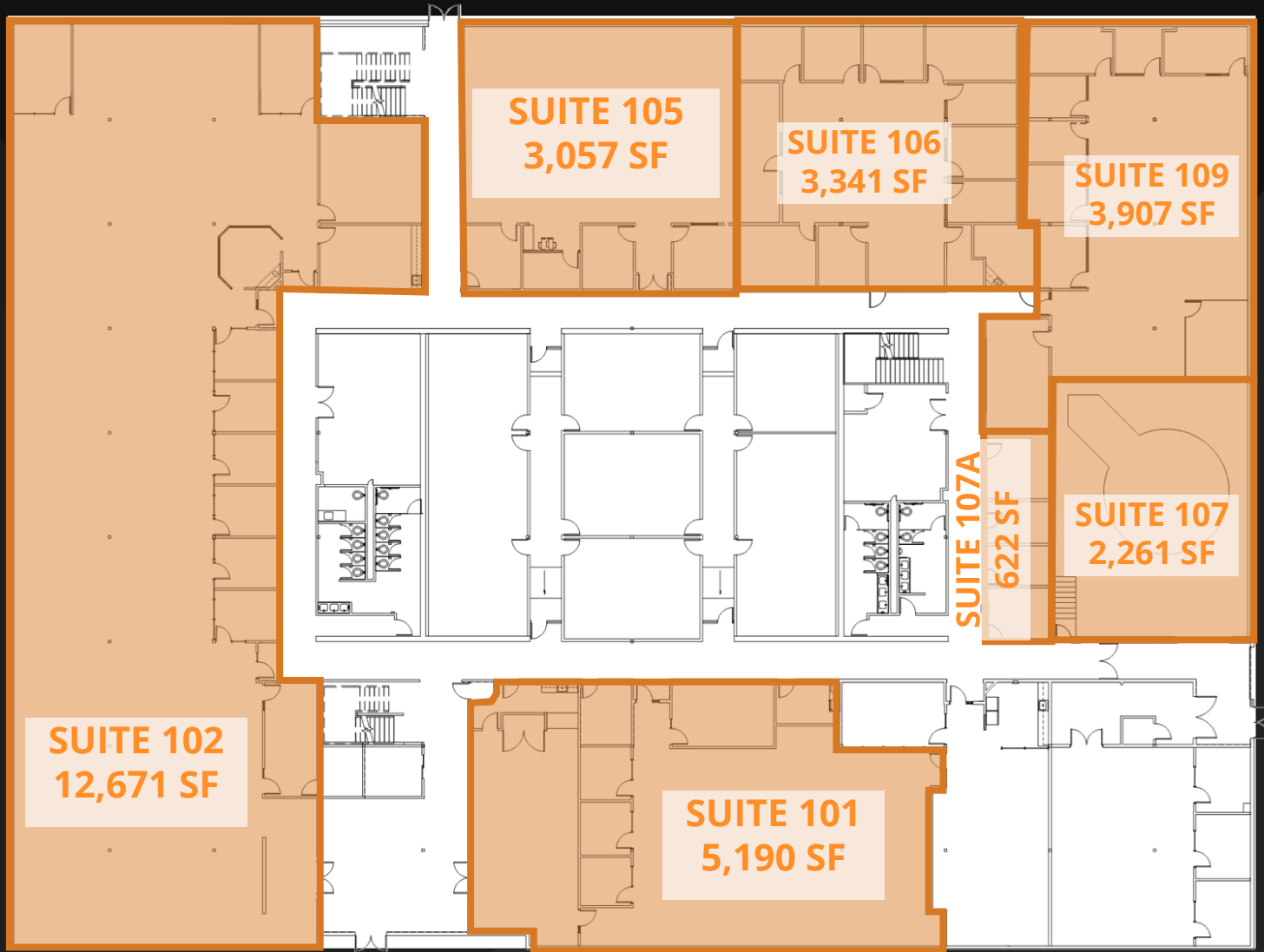
801-633-3891

[s\\_wixom@woodburycorp.com](mailto:s_wixom@woodburycorp.com)



## PROJECT HIGHLIGHTS

- 622 – 56,829 RSF available
- Lab, office, and flex compatible
- 4.5 parking stalls / 1,000 SF
- Interior lobby renovation in 2019
- 17' clear ceiling clear height
- Preeminent Location
- Fiber optic data connectivity
- Backup generation available
- Truck-high loading dock





**SUITE 200**  
**36,748 SF**  
**AVAILABLE**  
**1/1/2025**

