

1413 W 127th St, Calumet Park, IL 60827

Calumet Park Plaza



OFFERING SUMMARY

Available SF:	Unit E: 1,180sf
	Unit H: 1,100sf
	Unit I: 1,180sf
Lease Rate:	\$20.00 SF/yr (NNN)
Lot Size:	0.77 Acres
Year Built:	2007
Building Size:	15,000
Zoning:	C2
Traffic Counts:	16,500VPD

PROPERTY OVERVIEW

Prime retail space in a busy retail center located at 127th St & Loomis. Co-tenants include Tracy's, Tony's Philly Steaks, Happy Nails, and Island Vibes Jerk Bar and Grill. Plenty of parking on site. Currently, 3 units are available for lease: a former State Farm, hairstylist, and MetroPCS. The site is near a major business and shopping district. The area is densely populated and minutes away from I-57.

PROPERTY HIGHLIGHTS

- Built in 2007
- Easy Access
- Located on 127th St, minutes from I-57
- Major Business & Shopping District
- Densely Populated Area

for more information

Neil Haleem

708.873.5540
neil@networkregroup.com

Adam Haleem

708.800.6487
adam@networkregroup.com



1413 W 127th St, Calumet Park, IL 60827

Calumet Park Plaza



Map data ©2025 Google Imagery ©2025 Airbus, Maxar Technologies

for more information

Neil Haleem

708.873.5540
neil@networkregroup.com

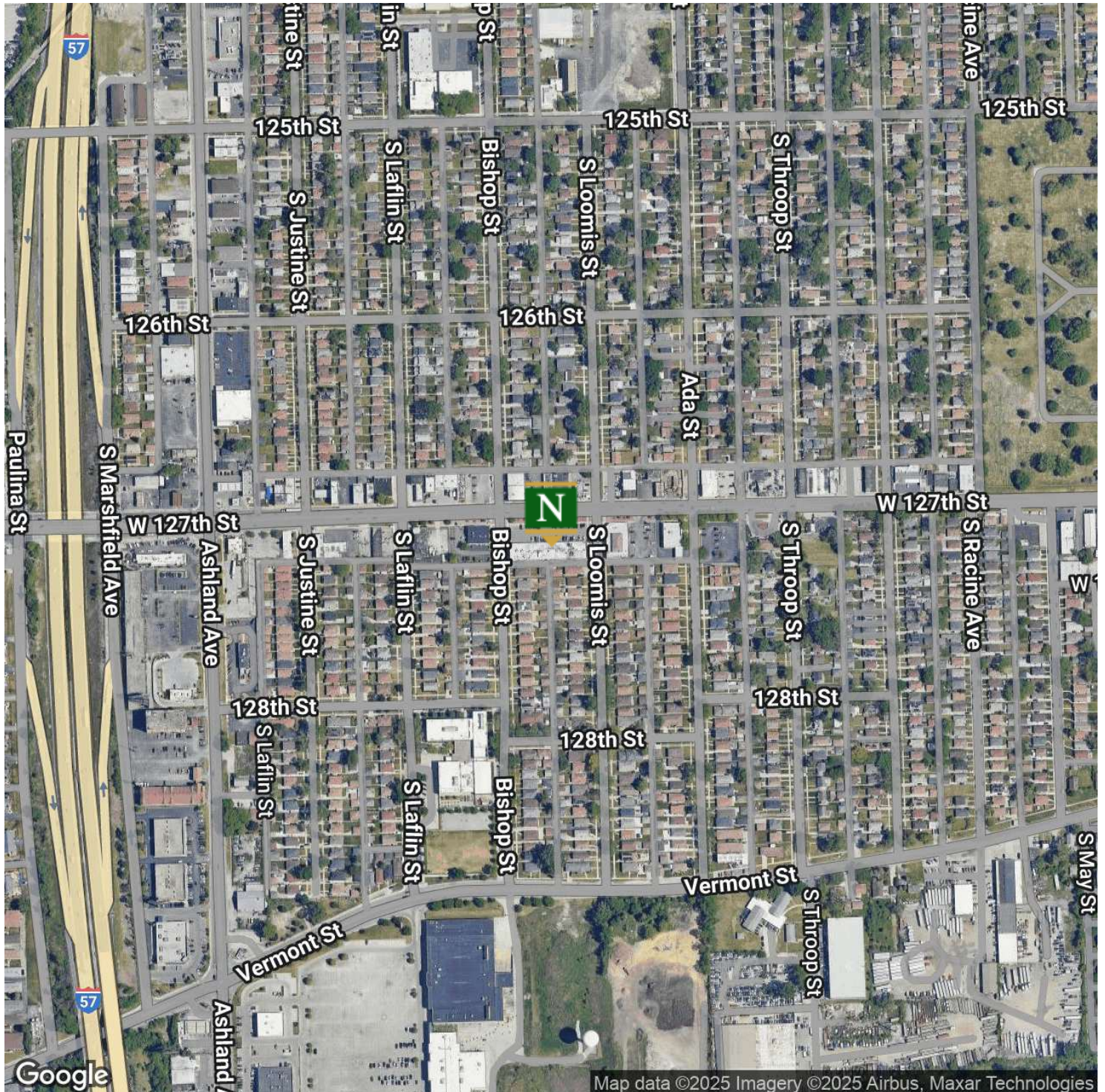
Adam Haleem

708.800.6487
adam@networkregroup.com



1413 W 127th St, Calumet Park, IL 60827

Calumet Park Plaza



for more information

Neil Haleem

708.873.5540

neil@networkregroup.com

Adam Haleem

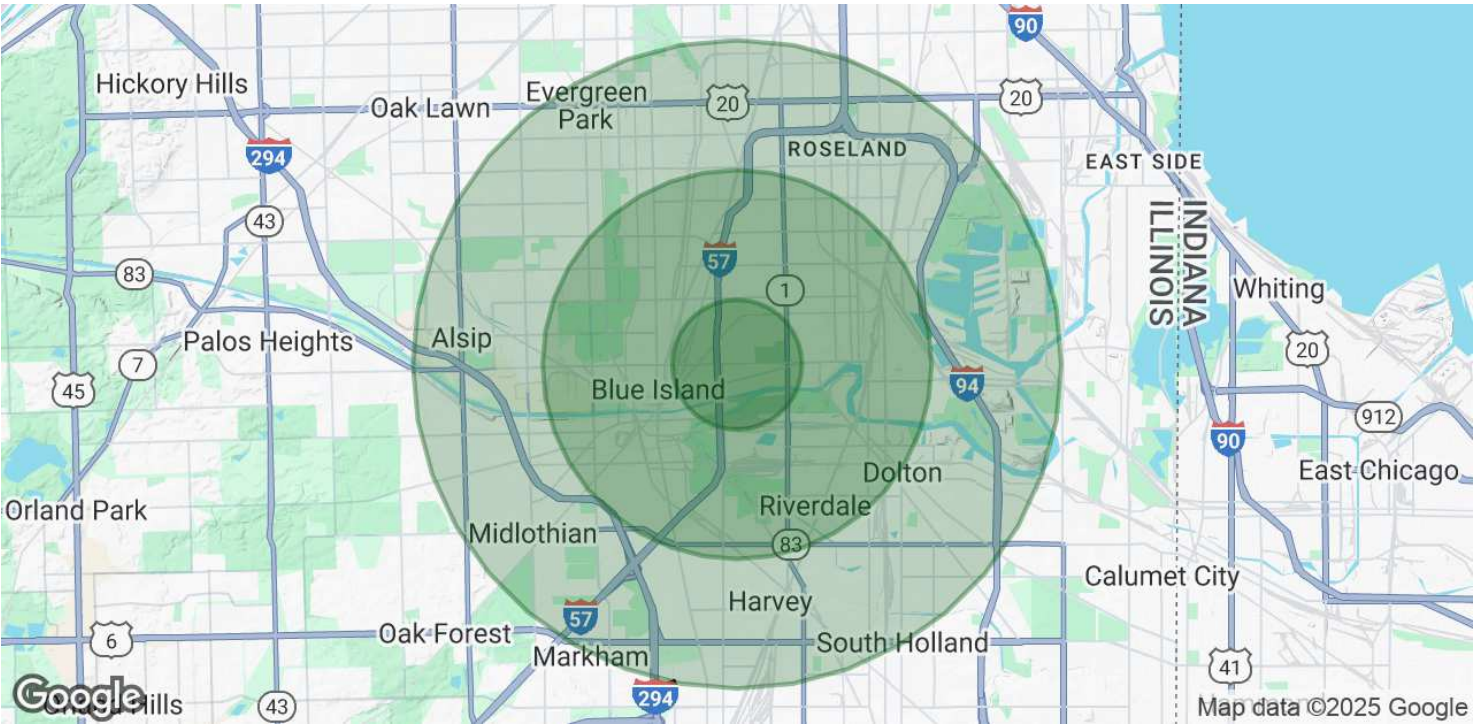
708.800.6487

adam@networkregroup.com



1413 W 127th St, Calumet Park, IL 60827

Calumet Park Plaza



POPULATION	1 MILE	3 MILES	5 MILES
Total Population	14,606	124,057	322,875
Average Age	41	40	41
Average Age (Male)	39	39	39
Average Age (Female)	43	42	42

HOUSEHOLDS & INCOME	1 MILE	3 MILES	5 MILES
Total Households	5,804	47,318	123,292
# of Persons per HH	2.5	2.6	2.6
Average HH Income	\$72,003	\$74,517	\$83,598
Average House Value	\$207,510	\$194,745	\$211,453

ETHNICITY (%)	1 MILE	3 MILES	5 MILES
Hispanic	18.3%	17.4%	16.4%

RACE	1 MILE	3 MILES	5 MILES
------	--------	---------	---------

for more information

Neil Haleem

708.873.5540

neil@networkregroup.com

Adam Haleem

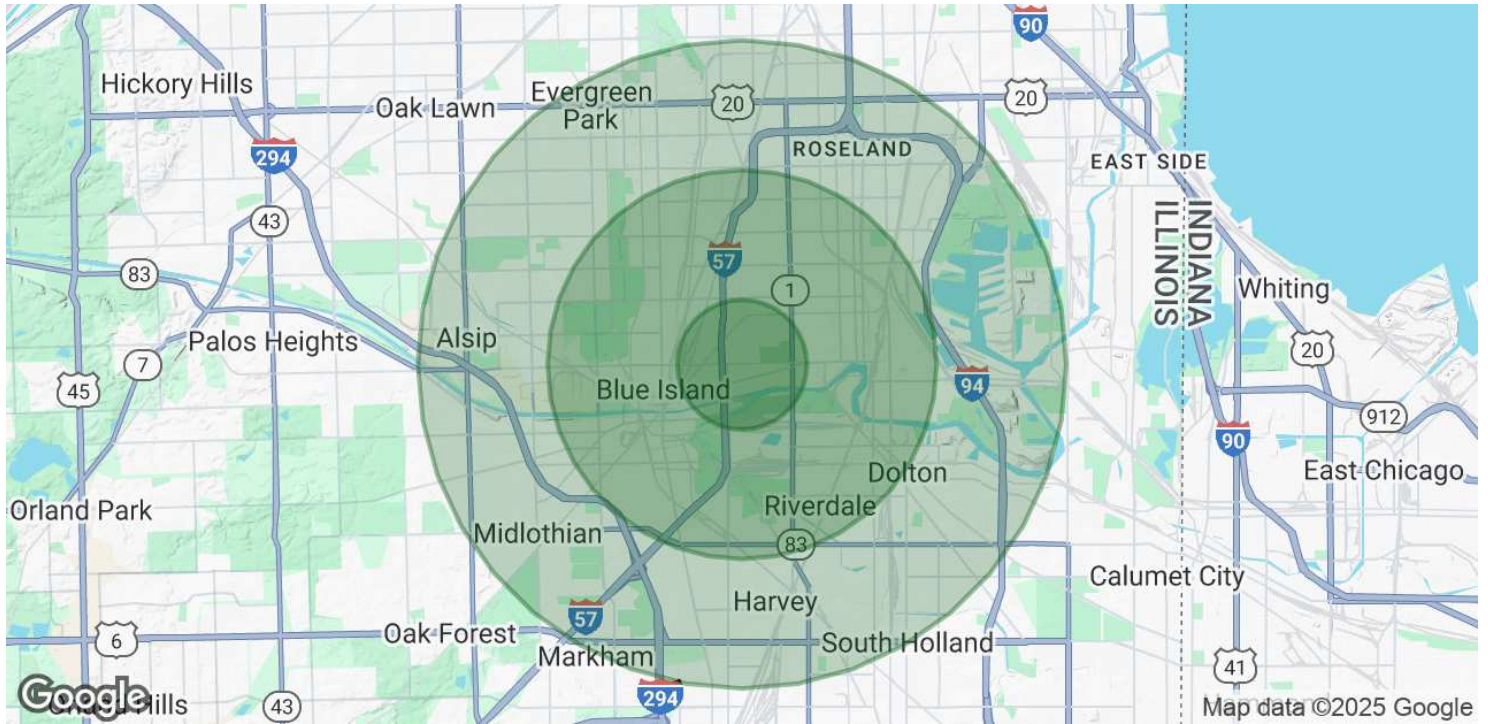
708.800.6487

adam@networkregroup.com



1413 W 127th St, Calumet Park, IL 60827

Calumet Park Plaza



Total Population - White	913	17,770	74,373
% White	6.3%	14.3%	23.0%
Total Population - Black	11,103	84,451	194,277
% Black	76.0%	68.1%	60.2%
Total Population - Asian	39	513	2,359
% Asian	0.3%	0.4%	0.7%
Total Population - Hawaiian	5	49	101
% Hawaiian	0.0%	0.0%	0.0%
Total Population - American Indian	118	843	1,769
% American Indian	0.8%	0.7%	0.5%
Total Population - Other	1,304	11,460	27,007
% Other	8.9%	9.2%	8.4%

Demographics data derived from AlphaMap

for more information

Neil Haleem

708.873.5540

neil@networkregroup.com

Adam Haleem

708.800.6487

adam@networkregroup.com