

21436 N 20TH DR



CONTENTS

PROPERTY INFORMATION	3
LOCATION INFORMATION	8

PRESENTED BY

■ JOSH LANDERS

Partner

O: 480.217.9599

C: 480.217.9599

E: josh@cre33.com

CONFIDENTIALITY & DISCLAIMER

All materials and information received or derived from Commercial 33 its directors, officers, agents, advisors, affiliates and/or any third party sources are provided without representation or warranty as to completeness, veracity, or accuracy, condition of the property, compliance or lack of compliance with applicable governmental requirements, developability or suitability, financial performance of the property, projected financial performance of the property for any party's intended use or any and all other matters.

Neither Commercial 33 its directors, officers, agents, advisors, or affiliates makes any representation or warranty, express or implied, as to accuracy or completeness of the any materials or information provided, derived, or received. Materials and information from any source, whether written or verbal, that may be furnished for review are not a substitute for a party's active conduct of its own due diligence to determine these and other matters of significance to such party. Commercial 33 will not investigate or verify any such matters or conduct due diligence for a party unless otherwise agreed in writing.

EACH PARTY SHALL CONDUCT ITS OWN INDEPENDENT INVESTIGATION AND DUE DILIGENCE.

Any party contemplating or under contract or in escrow for a transaction is urged to verify all information and to conduct their own inspections and investigations including through appropriate third party independent professionals selected by such party. All financial data should be verified by the party including by obtaining and reading applicable documents and reports and consulting appropriate independent professionals. Commercial 33 makes no warranties and/or representations regarding the veracity, completeness, or relevance of any financial data or assumptions. Commercial 33 does not serve as a financial advisor to any party regarding any proposed transaction. All data and assumptions regarding financial performance, including that used for financial modeling purposes, may differ from actual data or performance. Any estimates of market rents and/or projected rents that may be provided to a party do not necessarily mean that rents can be established at or increased to that level. Parties must evaluate any applicable contractual and governmental limitations as well as market conditions, vacancy factors and other issues in order to determine rents from or for the property.

Legal questions should be discussed by the party with an attorney. Tax questions should be discussed by the party with a certified public accountant or tax attorney. Title questions should be discussed by the party with a title officer or attorney. Questions regarding the condition of the property and whether the property complies with applicable governmental requirements should be discussed by the party with appropriate engineers, architects, contractors, other consultants and governmental agencies. All properties and services are marketed by Commercial 33 in compliance with all applicable fair housing and equal opportunity laws.

This information has been obtained from sources believed reliable. We have not verified it and make no guarantee, warranty or representation about it. Any projections, opinions, assumptions or estimates used are for example only and do not represent the current or future performance of the property. You and your advisors should conduct a careful, independent investigation of the property to determine to your satisfaction the suitability of the property for your needs. Photos herein are the property of their respective owners and use of these images without the express written content of the owner is prohibited.

33

COMMERCIAL 33

ACQUISITION | CAPITAL | DISPOSITION



1 | PROPERTY INFORMATION

Executive Summary

Floor Plans - 1st Floor

Floor Plans - 2nd Floor

Additional Photos

33

COMMERCIAL 33
ACQUISITION | CAPITAL | DISPOSITION

21436 N 20TH DR | 9,786 SF | PHOENIX, AZ

Executive Summary



OFFERING SUMMARY

Sale Price:	\$3,100,000.00
Building Size:	9,786 SF
Available SF:	3,708 - 9,786 SF
Year Built:	1987
Renovated:	2018
Zoning:	C-3
Market:	Phoenix Metro
Submarket:	Deer Valley

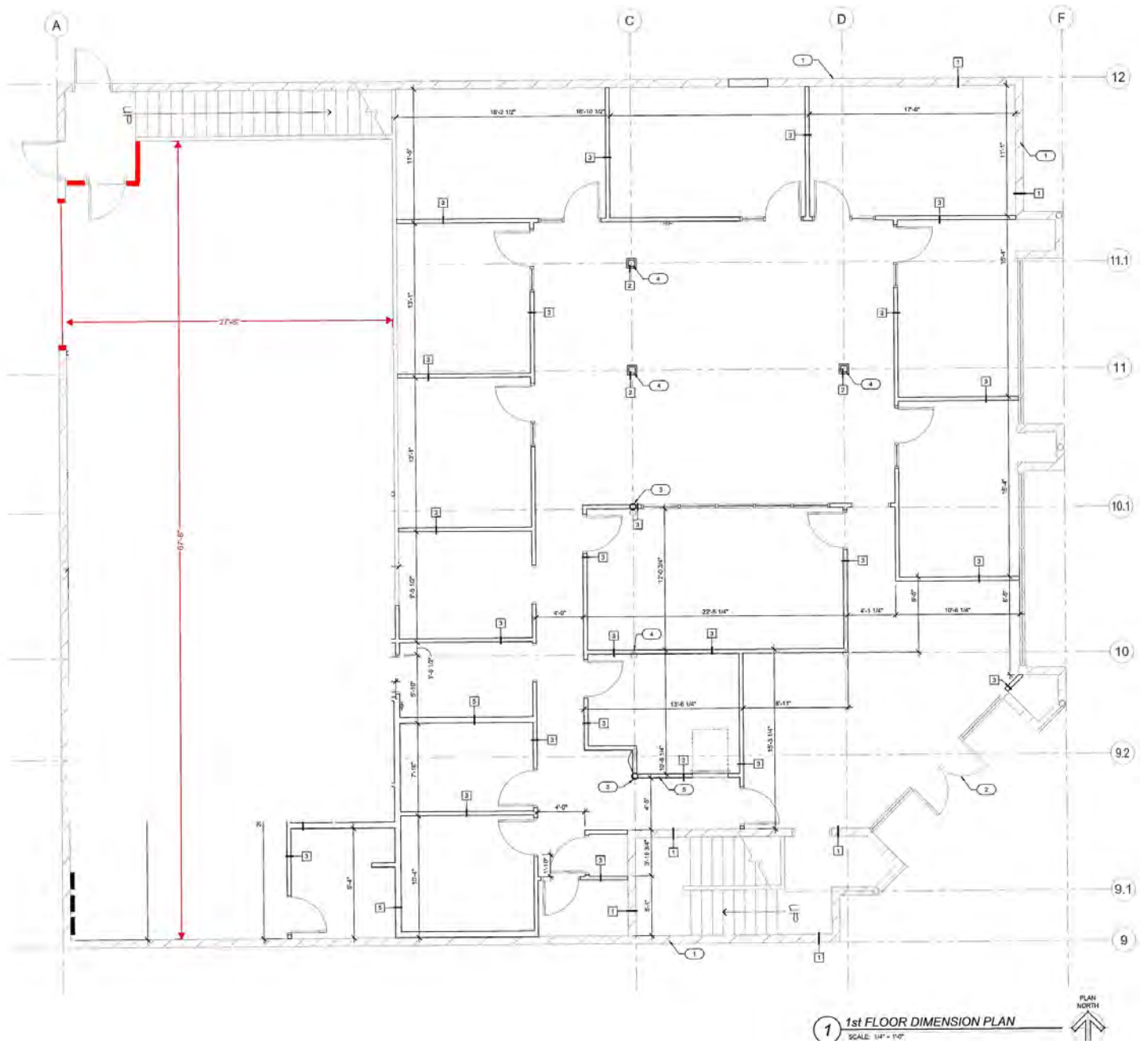
PROPERTY OVERVIEW

Professional Office Space for sale or lease with A/C Flex warehouse space.

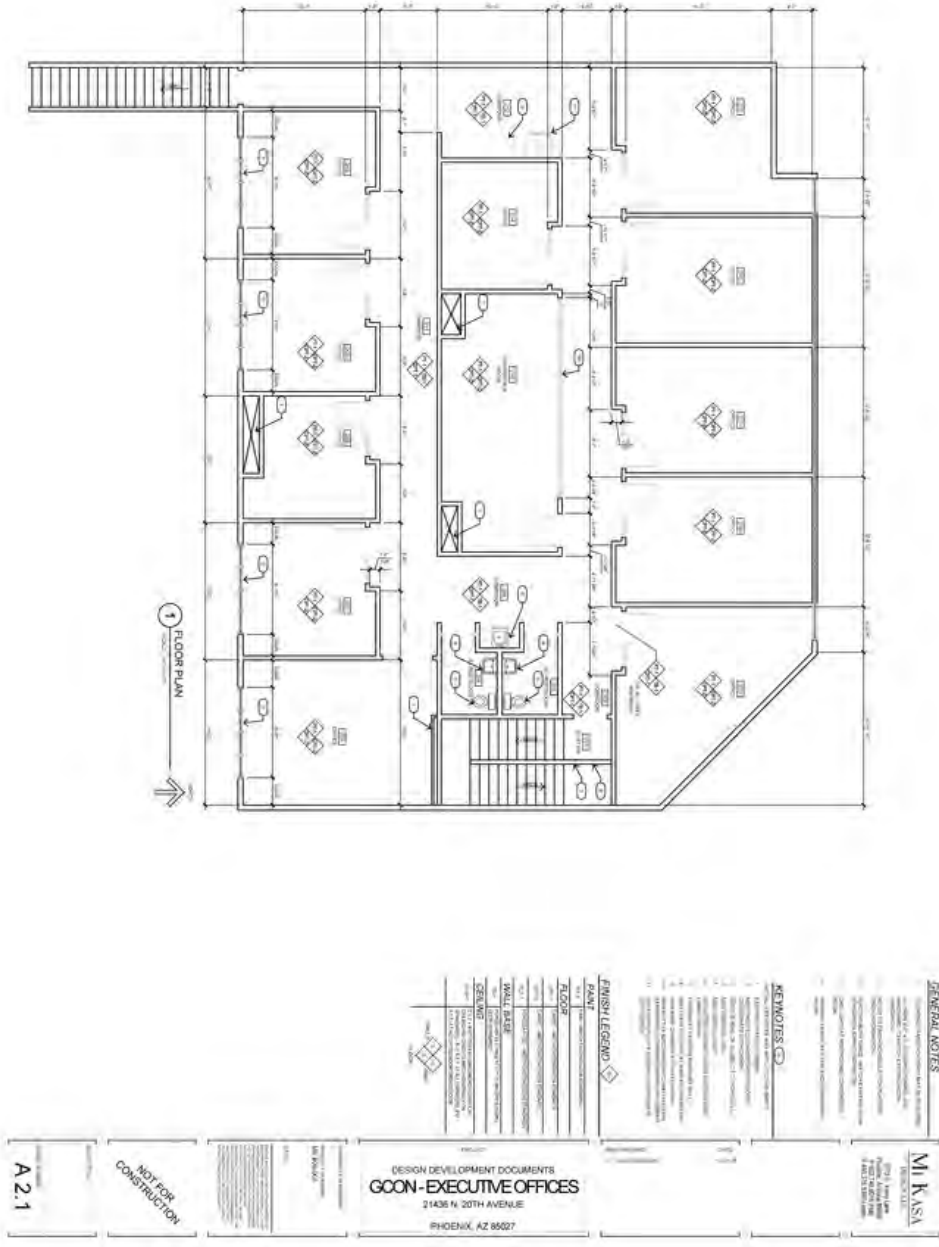
PROPERTY HIGHLIGHTS

- 1ST FLOOR:
 - 14 - Private Office's
 - 1 - Glass Walled Conference Room
 - 1 - Breakroom
 - 2 - Restrooms
 - 1 - Open Bullpen Work Space
 - A/C Warehouse Space
- 2ND FLOOR
 - 11 - Private Offices
 - 1 - Conference Room
 - 1 - Breakroom
 - 2 - Restrooms

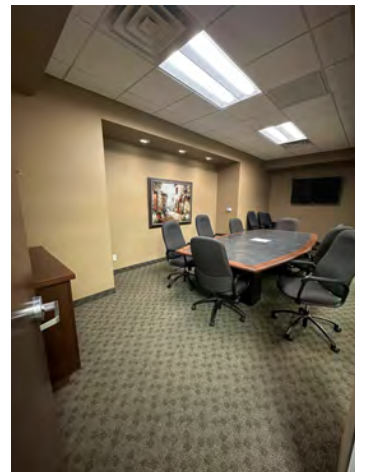
Floor Plans - 1st Floor



Floor Plans - 2nd Floor



Additional Photos





2 | LOCATION INFORMATION

Regional Map

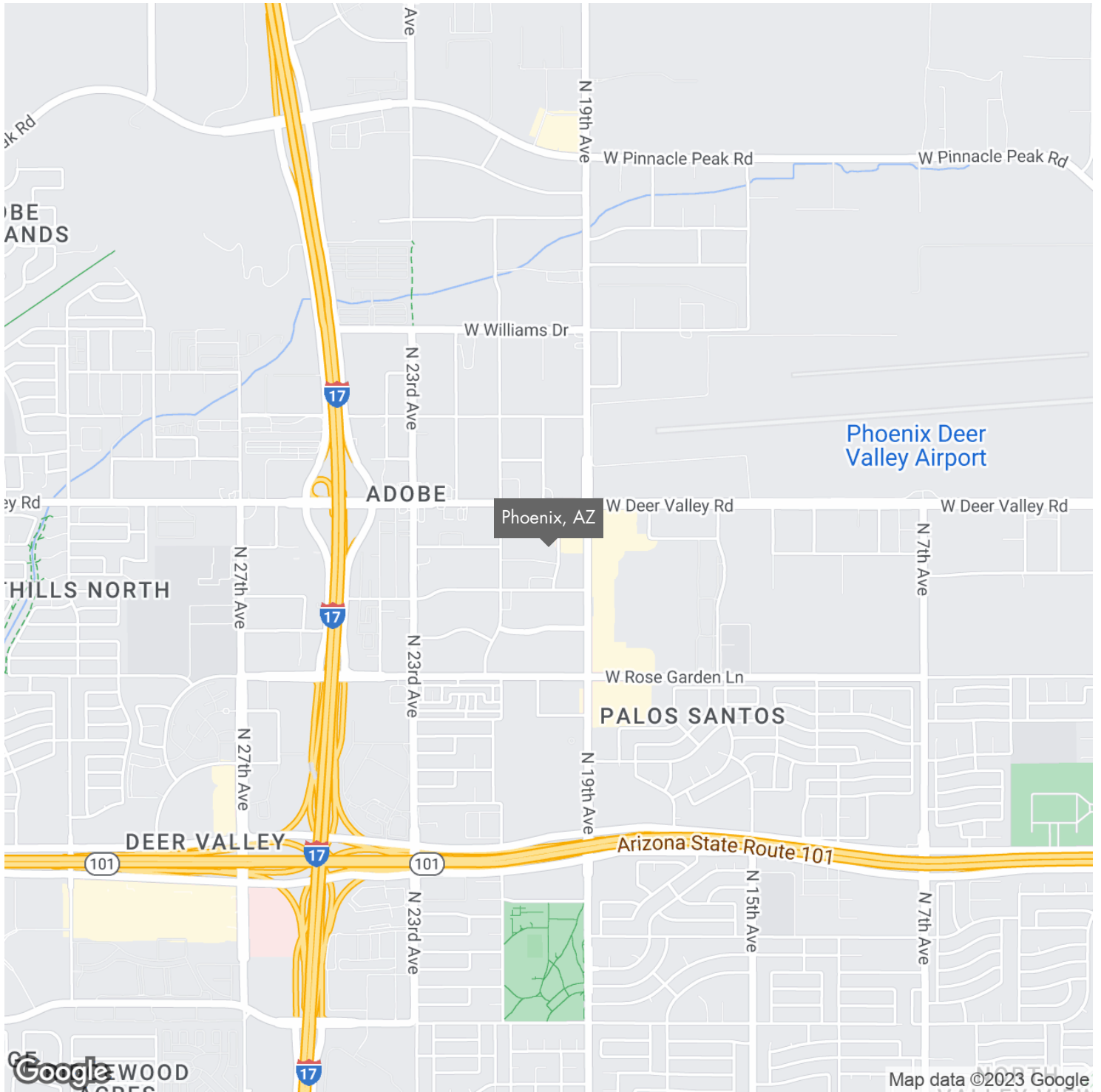
Aerial Map

33

COMMERCIAL 33
ACQUISITION | CAPITAL | DISPOSITION

21436 N 20TH DR | 9,786 SF | PHOENIX, AZ

Regional Map



21436 N 20TH DR | 9,786 SF | PHOENIX, AZ

Aerial Map

