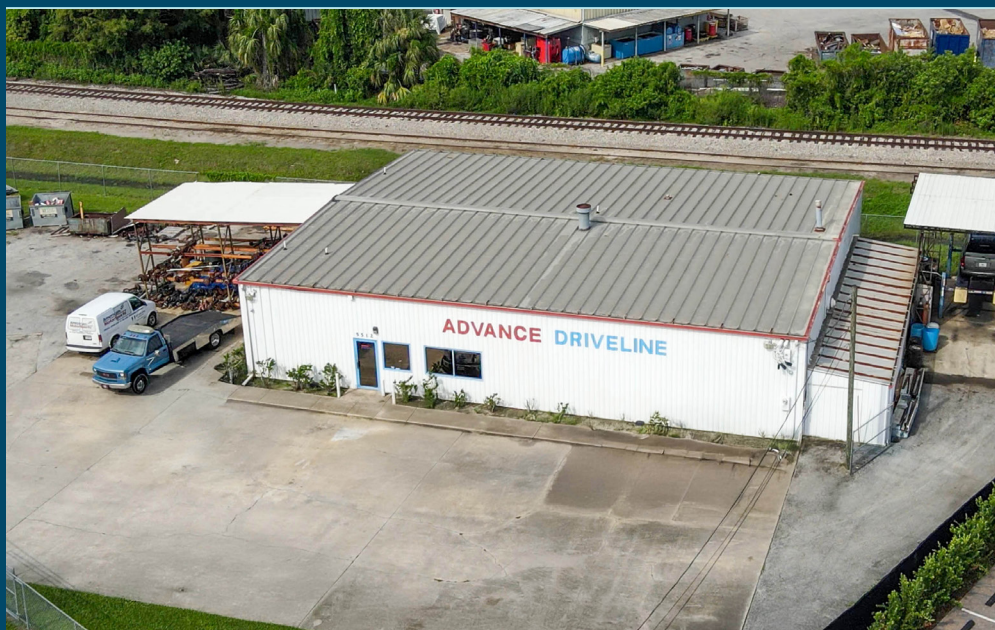




# Industrial Building For Sale

**6,263 SF**

5512 CARTER ROAD  
ORLANDO, FL 32810





# Industrial Building For Sale

**6,263 SF**  
5512 CARDER ROAD  
ORLANDO, FL 32810

## PROPERTY HIGHLIGHTS

5512 Carder Road offers a unique chance to secure a well-located, highly functional industrial property with exceptional accessibility across the greater Orlando area.

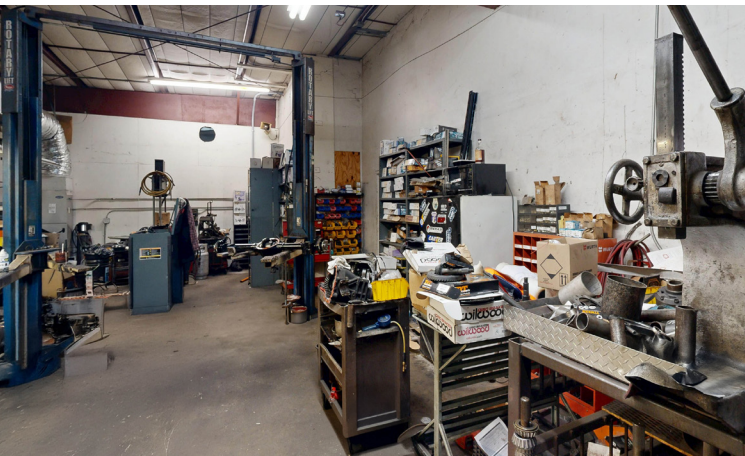
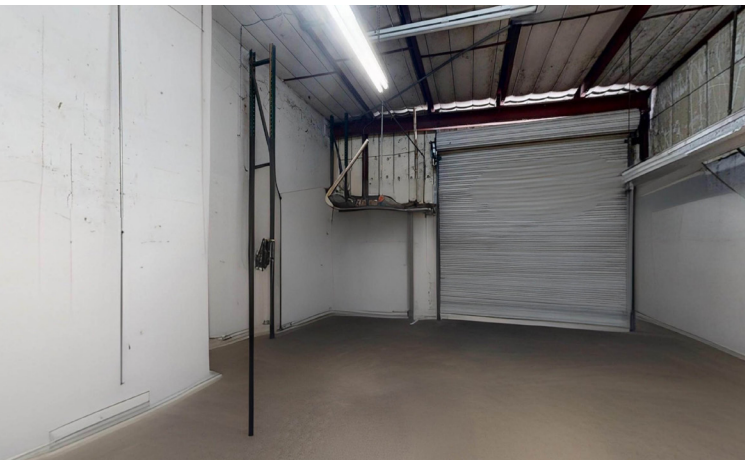
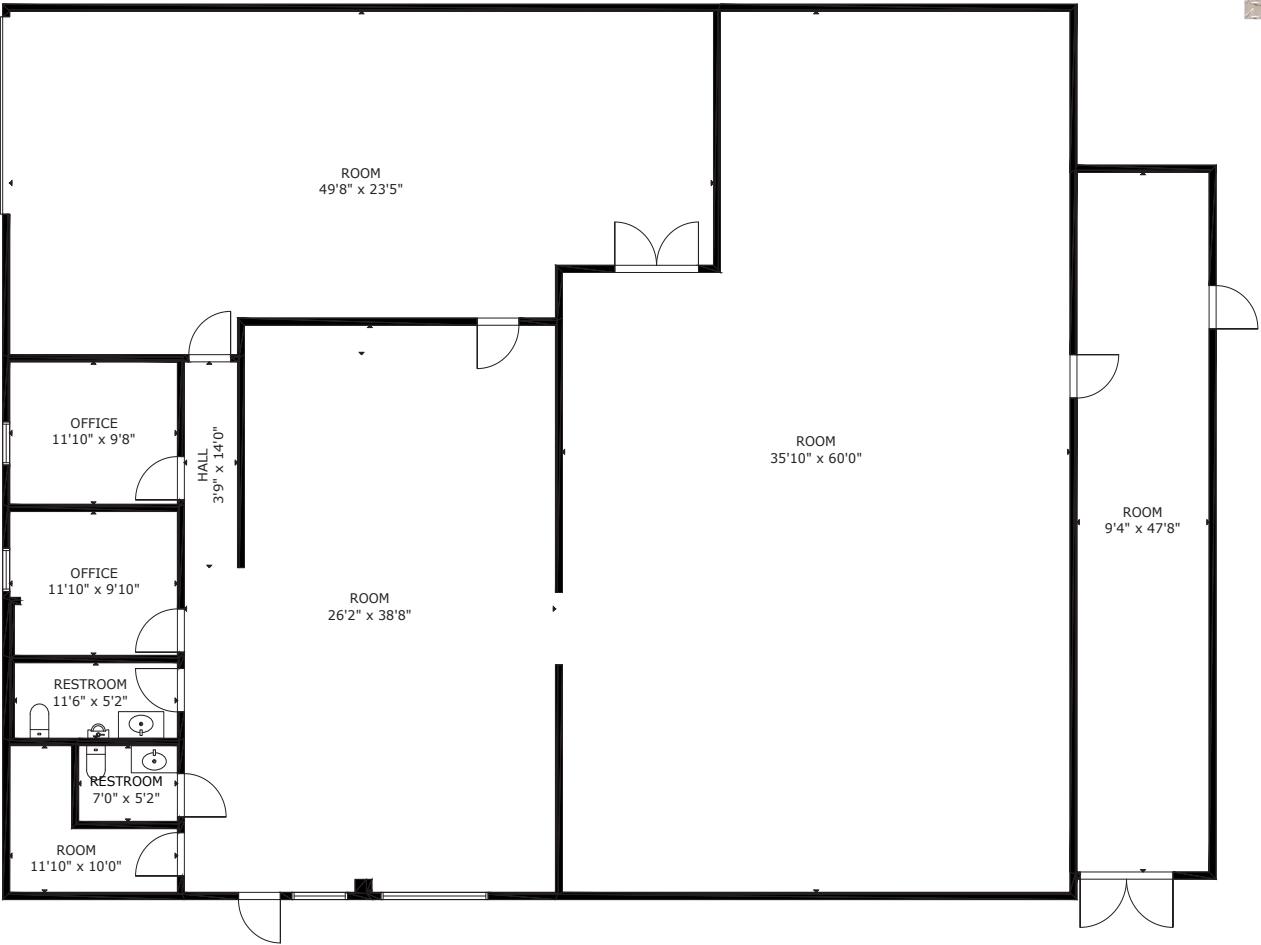
- Client-Facing Showroom/Retail Space
- Perfect for customer engagement and front-facing operations.
- Private Office Layout
- Designed to support operational efficiency and team productivity.
- Climate-Controlled Warehouse
- Ideal for sensitive inventory and year-round comfort.
- Covered Outdoor Storage
- Flexible space for equipment, vehicles, or overflow materials.
- Fenced & Secured Exterior Storage
- Enhanced security for trucks, equipment, or additional inventory.

With its strategic location, versatile layout, and secure infrastructure, 5512 Carder Road is the ideal solution for businesses seeking access, functionality, and peace of mind.

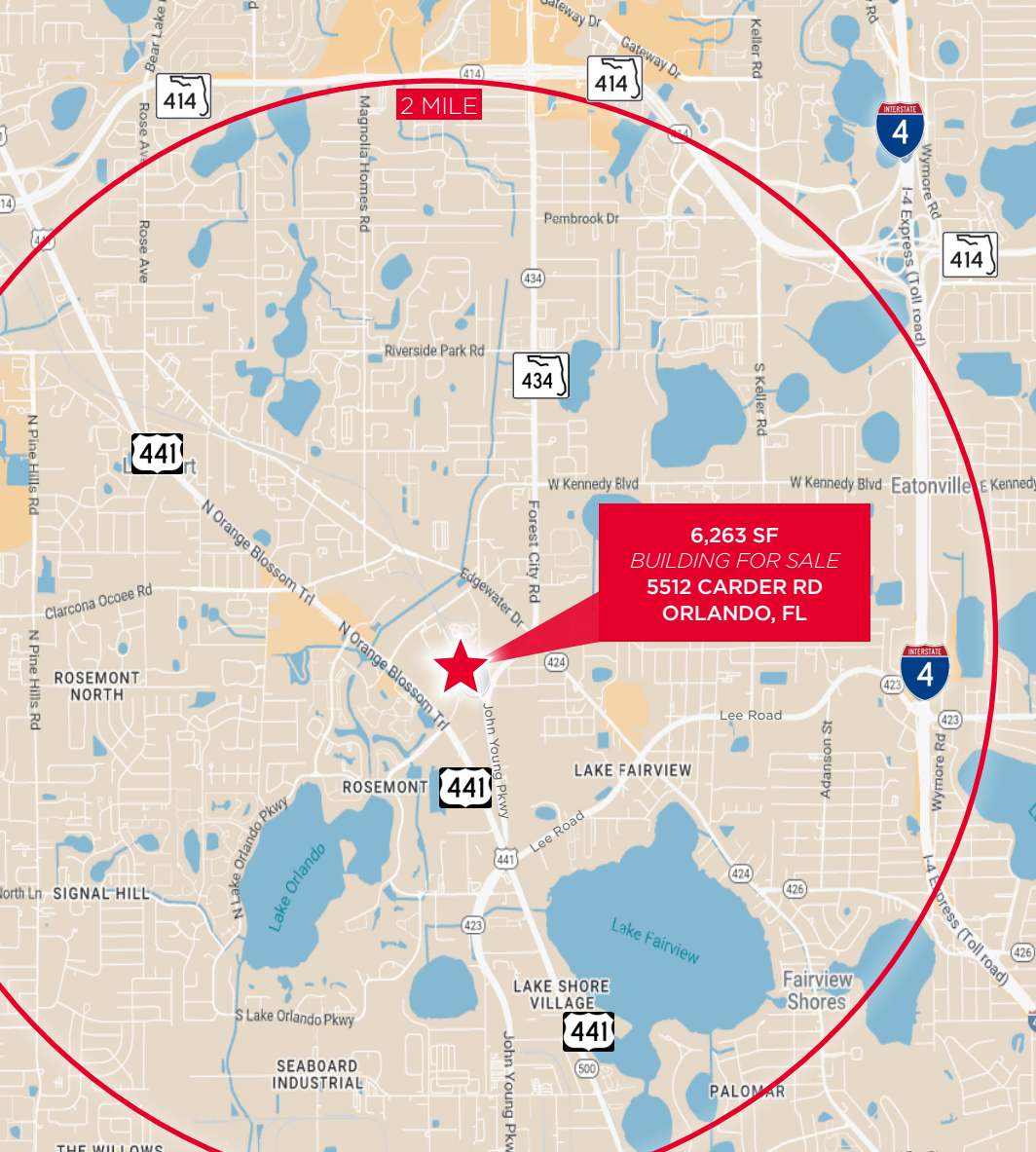
**FLOOR PLAN**  
5,000± SF HVAC

## PROPERTY SPECIFICATIONS

- » Total Square Footage: 6,263 (5,000± HVAC, 1,260± warehouse with canopy open air)
- » Building Construction: Metal
- » Total Property Size: .80 Acres
- » Zoning: IND-4
- » Year Built: 1981
- » Loading: Grade Level
- » Loading Doors: 2
- » Door Sizes: (1) 12'x12' (1) 8'x12'
- » Clear Height: 16'
- » Power: 3 phase
- » 3 Lifts included with Building
- » Will be Delivered Vacant







**6,263 SF  
BUILDING FOR SALE  
5512 CARDER RD  
ORLANDO, FL**

## AREA HIGHLIGHTS



5 MI RADIUS  
POPULATION  
**265,521+**



5 MI RADIUS  
HOUSEHOLDS  
**106,444+**



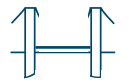
5 MI RADIUS  
AVG INCOME  
**\$81,980+**



AMPLE  
PARKING  
**FENCED IN**



LOADING  
DOORS  
**2 GRADE LEVEL**



INCLUDED  
WITH BUILDING  
**3 CAR LIFTS**



LOCATION  
**I-4 - 8 MINUTES  
408 EXPY - 10 MINUTES  
CBD - 13 MINUTES**



ORLANDO INT'L  
AIRPORT  
**35 MINUTES**



### FOR MORE INFORMATION:

#### SAM KING

Senior Associate  
Sales & Acquisitions | Central FL  
Direct: +1 407 949 0898  
Cell: +1 407 341 7728  
[sam.j.king@cushwake.com](mailto:sam.j.king@cushwake.com)

#### GLEN JAFFEE

Senior Director  
Sales & Acquisitions | Central FL  
Direct: +1 407 541 4408  
Cell: +1 407 353-3426  
[glen.jaffee@cushwake.com](mailto:glen.jaffee@cushwake.com)



©2025 Cushman & Wakefield. All rights reserved. The information contained in this communication is strictly confidential. This information has been obtained from sources believed to be reliable but has not been verified. NO WARRANTY OR REPRESENTATION, EXPRESS OR IMPLIED, IS MADE AS TO THE CONDITION OF THE PROPERTY (OR PROPERTIES) REFERENCED HEREIN OR AS TO THE ACCURACY OR COMPLETENESS OF THE INFORMATION CONTAINED HEREIN, AND SAME IS SUBMITTED SUBJECT TO ERRORS, OMISSIONS, CHANGE OF PRICE, RENTAL OR OTHER CONDITIONS, WITHDRAWAL WITHOUT NOTICE, AND TO ANY SPECIAL LISTING CONDITIONS IMPOSED BY THE PROPERTY OWNER(S). ANY PROJECTIONS, OPINIONS OR ESTIMATES ARE SUBJECT TO UNCERTAINTY AND DO NOT SIGNIFY CURRENT OR FUTURE PROPERTY PERFORMANCE.

20 N Orange Ave Ste 300,  
Orlando, FL 32801  
Main: +1 407 841 8000  
[cushmanwakefield.com](http://cushmanwakefield.com)