

PLUG & PLAY OFFICE OPPORTUNITY

HYDE PARK PROFESSIONAL OFFICE

1003 W Cleveland St, Tampa, FL 33606

TAMPA | FLORIDA

± 1,890 SF
FOR LEASE



SPACE DETAILS

AVAILABLE

± 1,890 SF

POSSESSION

Available immediately

GLA

1,890 SF

COMMENTS

- This office space is ready to go!
- Well Appointed office in the highly desirable South Tampa Market
- Four (4) Executive offices
- One (1) Separate copy room
- Bull Pen with Four (4) stations & desks
- Kitchen
- On-site parking

DEMOGRAPHICS

POPULATION

1 Mile	22,985
3 Miles	124,459
5 Miles	243,495

DAYTIME POPULATION

1 Mile	69,889
3 Miles	214,385
5 Miles	390,861

TOTAL HOUSEHOLDS

1 Mile	10,312
3 Miles	57,043
5 Miles	106,690

AVERAGE HH INCOME

1 Mile	\$136,749
3 Miles	\$133,586
5 Miles	\$122,980

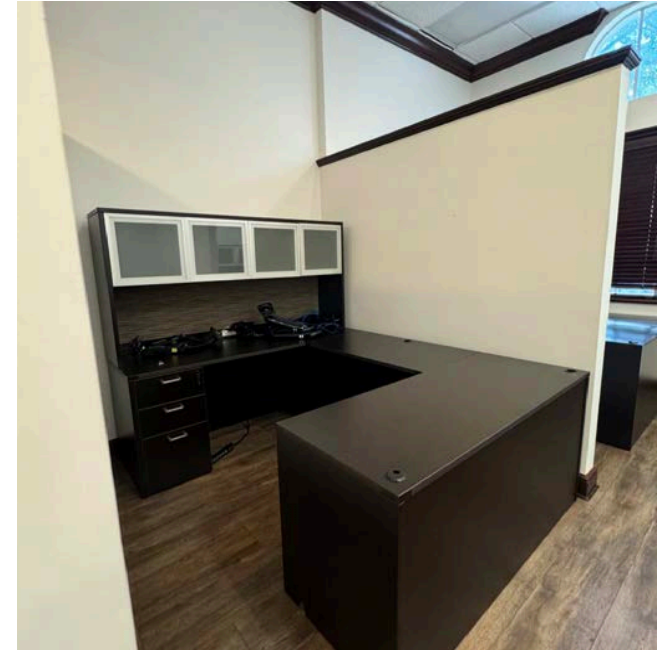
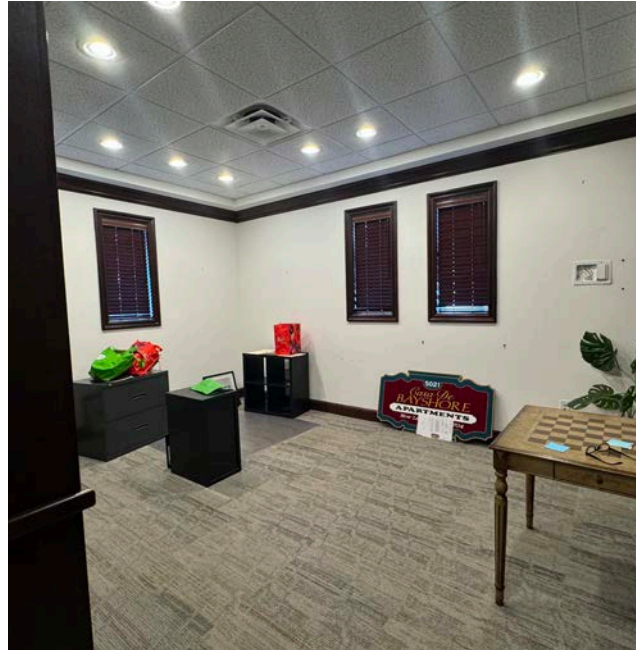
TOTAL BUSINESSES

1 Mile	4,749
3 Miles	12,928
5 Miles	21,891

TOTAL EMPLOYEES

1 Mile	59,935
3 Miles	160,384
5 Miles	281,071

INTERIOR PHOTOS



SITE PLAN



MARKET AERIAL MAP

