

**FOR LEASE**

Owned and Operated by  **LINK**

# Interport Business Center | Building C

5310 - 5380 Laburnum Avenue, Richmond, VA

## 6,940 SF Suite Available



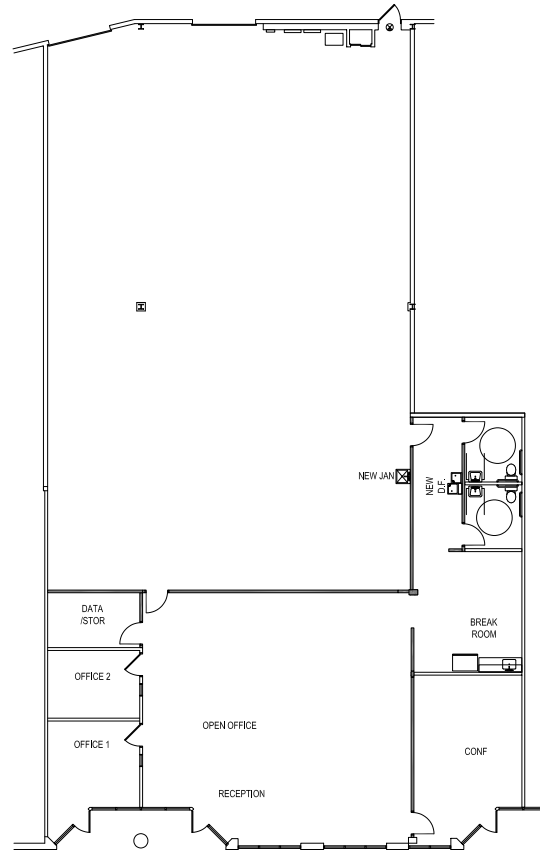
### LEASING INFO & CONTACT

Matt Anderson / Executive Vice President  
Marc Allocca / Senior Vice President

(804) 240-8833 / [manderson@rangecommercial.com](mailto:manderson@rangecommercial.com)  
(804) 426-5888 / [mallocca@rangecommercial.com](mailto:mallocca@rangecommercial.com)

This is not an offer or acceptance of an offer to lease space. A lease will only be offered or made in a written agreement signed by landlord. No representation or warranty of any kind is made by landlord unless set forth in a written definitive lease executed by the landlord.





**Suite 5360:  
6,940 SF warehouse  
(2,375 office)**

## PROPERTY HIGHLIGHTS

Class A one story office/warehouse with dedicated storefront entrance

Suite 5360: 6,940 warehouse space, 2 loading docks, LED light fixtures

4.0 per 1,000 SF parking

277/480, 3 phase power

Suspended gas heater in warehouse

Zoning: M-1

Superior visibility from Laburnum Ave for optimal signage opportunities

+/- 1 mile from Richmond International Airport with proximity to strong local amenity base

Available for immediate occupancy



