

FOR LEASE

RIVERVIEW EAST



PROPERTY DETAILS

2800 W. 1200 S., Marriott-Slaterville, UT 84404

- New Development Located in Growing Weber County Location
- Multiple End Caps with Drive Thru Available
- Tenant Improvements Available for Qualified Offers
- Building 1: 1,500–6,000 SF Available
- Building 2: 1,500–6,000 SF Available
- Building 3: 1,500–6,000 SF Available

SURROUNDING TENANTS



NEWMARK

MOUNTAIN WEST

BRAXTON WILLIE, CCIM

bwillie@newmarkmw.com

direct 801.803.3334

[View Profile](#)

SHAYDON WOOD

swood@newmarkmw.com

direct 801.456.8810

[View Profile](#)

BRANSON WOOD

bwood@newmarkmw.com

direct 801.510.5207

[View Profile](#)

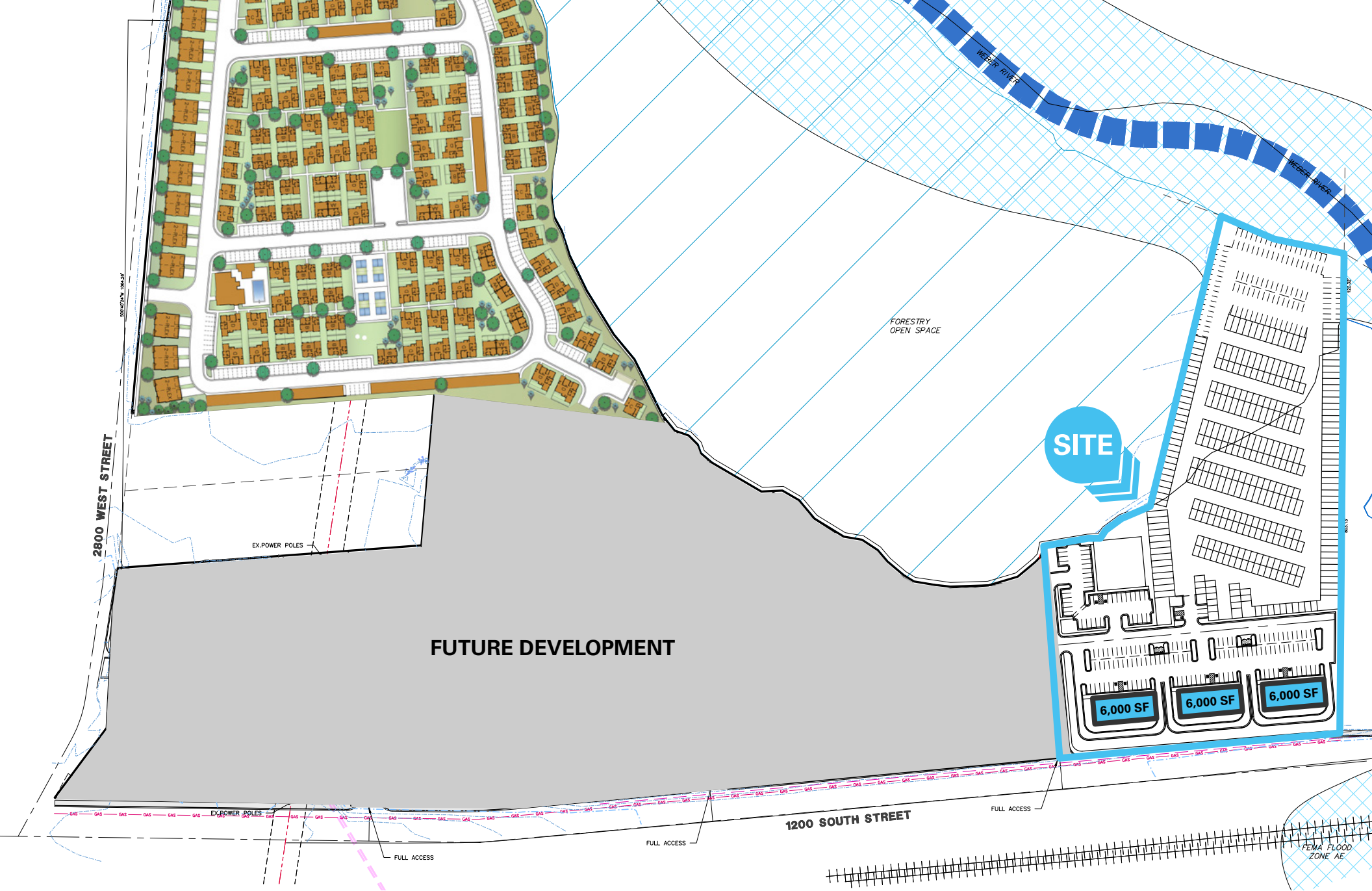
**FULL SERVICE
COMMERCIAL REAL ESTATE**

312 East South Temple

Salt Lake City, Utah 84111

Office 801.456.8800

www.newmarkmw.com

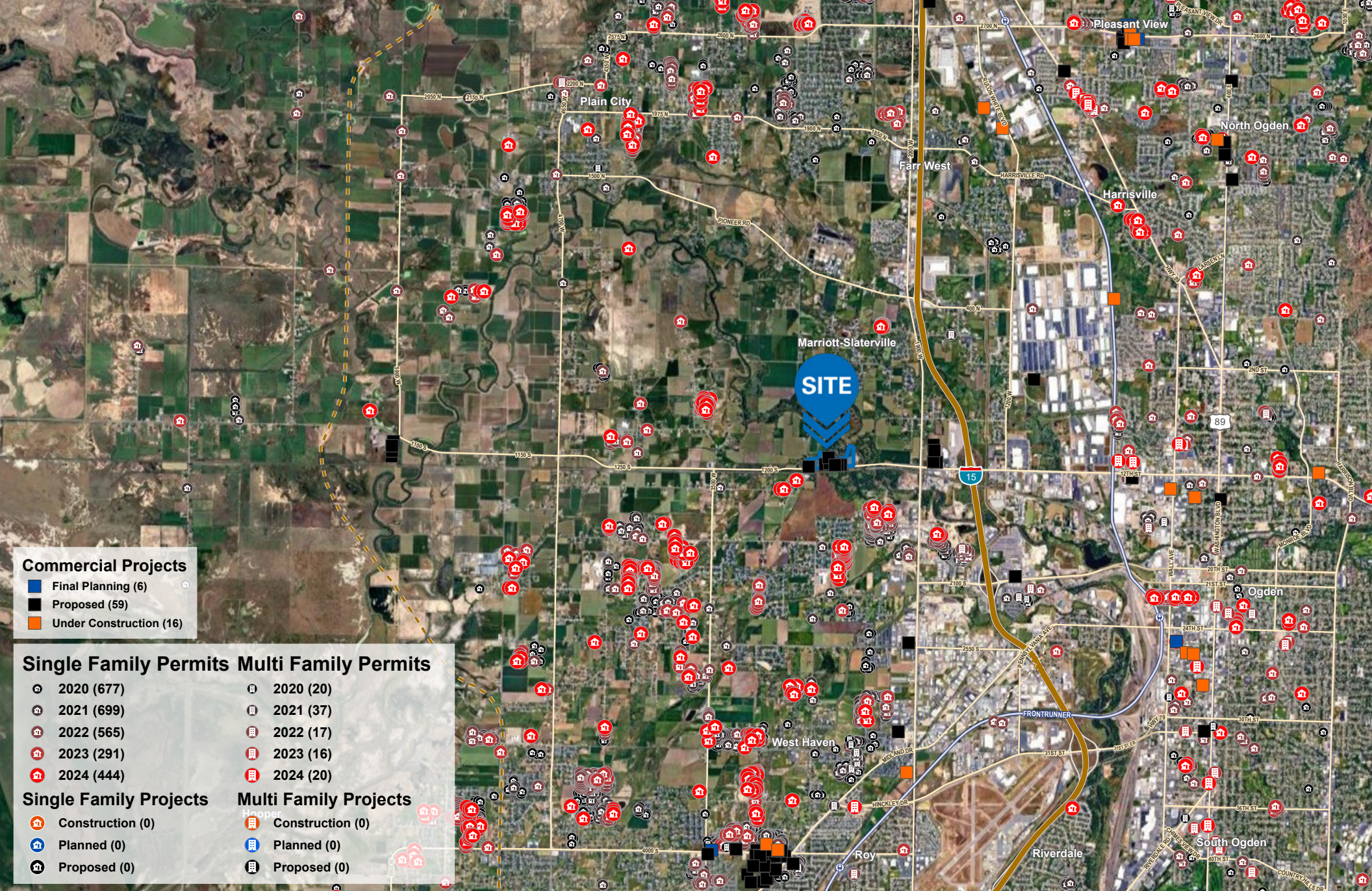


BRAXTON WILLIE, CCIM
 bwillie@newmarkmw.com
 direct 801.803.3334
[View Profile](#)

SHAYDON WOOD
 swood@newmarkmw.com
 direct 801.456.8810
[View Profile](#)

BRANSON WOOD
 bwood@newmarkmw.com
 direct 801.510.5207
[View Profile](#)

**FULL SERVICE
 COMMERCIAL REAL ESTATE**
 312 East South Temple
 Salt Lake City, Utah 84111
 Office 801.456.8800
www.newmarkmw.com



Commercial Projects

- Final Planning (6)
- Proposed (59)
- Under Construction (16)

Single Family Permits	Multi Family Permits
🏠 2020 (677)	🏠 2020 (20)
🏠 2021 (699)	🏠 2021 (37)
🏠 2022 (565)	🏠 2022 (17)
🏠 2023 (291)	🏠 2023 (16)
🏠 2024 (444)	🏠 2024 (20)
Single Family Projects	Multi Family Projects
🏠 Construction (0)	🏠 Construction (0)
🏠 Planned (0)	🏠 Planned (0)
🏠 Proposed (0)	🏠 Proposed (0)



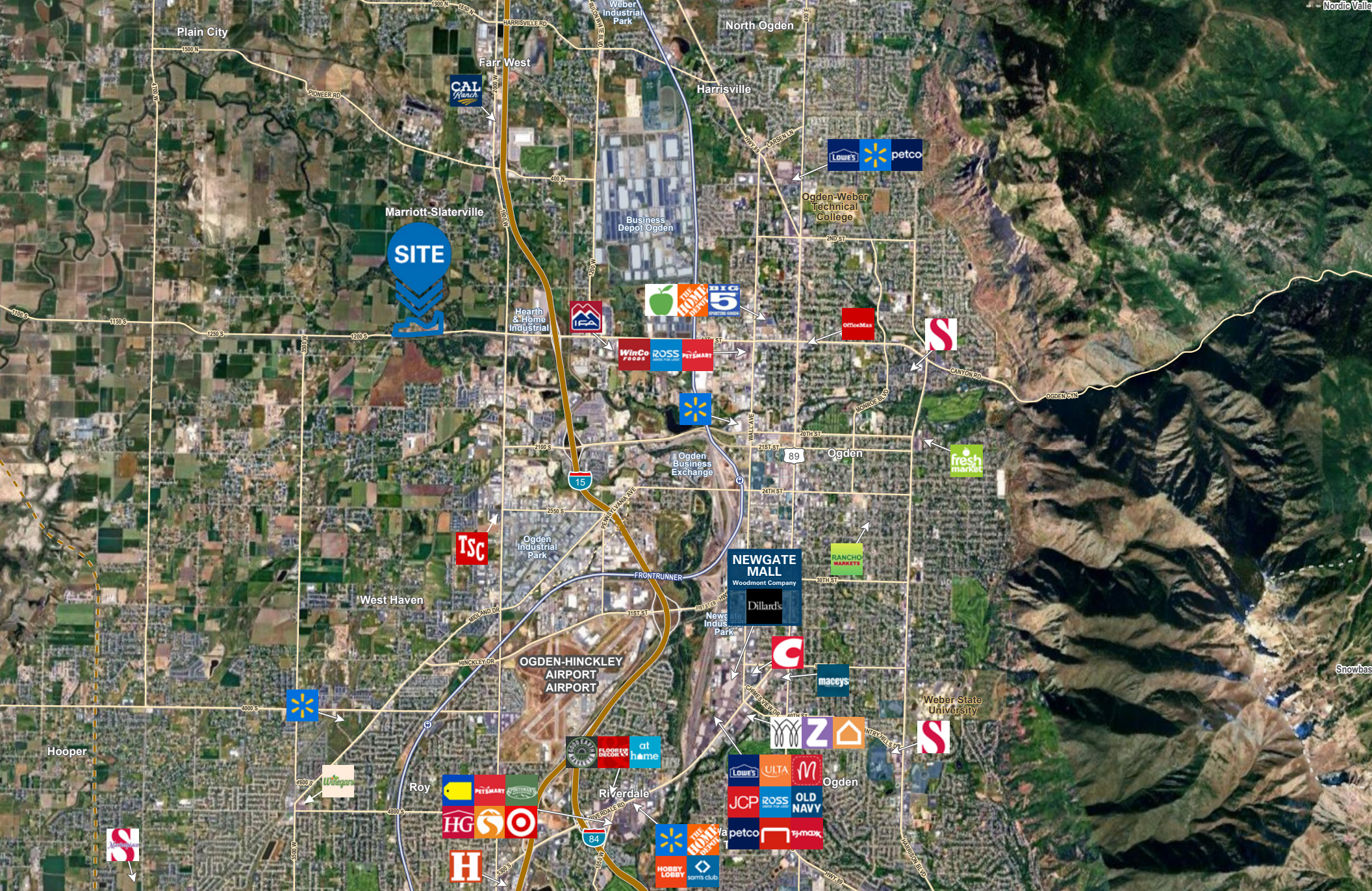
BRAXTON WILLIE, ccim
 bwillie@newmarkmw.com
 direct 801.803.3334
[View Profile](#)

SHAYDON WOOD
 swood@newmarkmw.com
 direct 801.456.8810
[View Profile](#)

BRANSON WOOD
 bwood@newmarkmw.com
 direct 801.510.5207
[View Profile](#)

**FULL SERVICE
 COMMERCIAL REAL ESTATE**
 312 East South Temple
 Salt Lake City, Utah 84111
 Office 801.456.8800
www.newmarkmw.com

This statement with the information it contains is given with the understanding that all negotiations relating to the purchase, renting or leasing of the property described above shall be conducted through this office. The above information while not guaranteed has been secured from sources we believe to be reliable.



BRAXTON WILLIE, CCIM
 bwillie@newmarkmw.com
 direct 801.803.3334
[View Profile](#)

SHAYDON WOOD
 swood@newmarkmw.com
 direct 801.456.8810
[View Profile](#)

BRANSON WOOD
 bwood@newmarkmw.com
 direct 801.510.5207
[View Profile](#)

**FULL SERVICE
 COMMERCIAL REAL ESTATE**
 312 East South Temple
 Salt Lake City, Utah 84111
 Office 801.456.8800
www.newmarkmw.com