



# Turnkey Professional Office Space For Lease



60 Roseland Avenue  
Caldwell, NJ

## Property Highlights

- 3,750 SF for lease
- Second floor space
- Dedicated parking lot in the rear
- Within walking distance to downtown Caldwell

## Financial Information

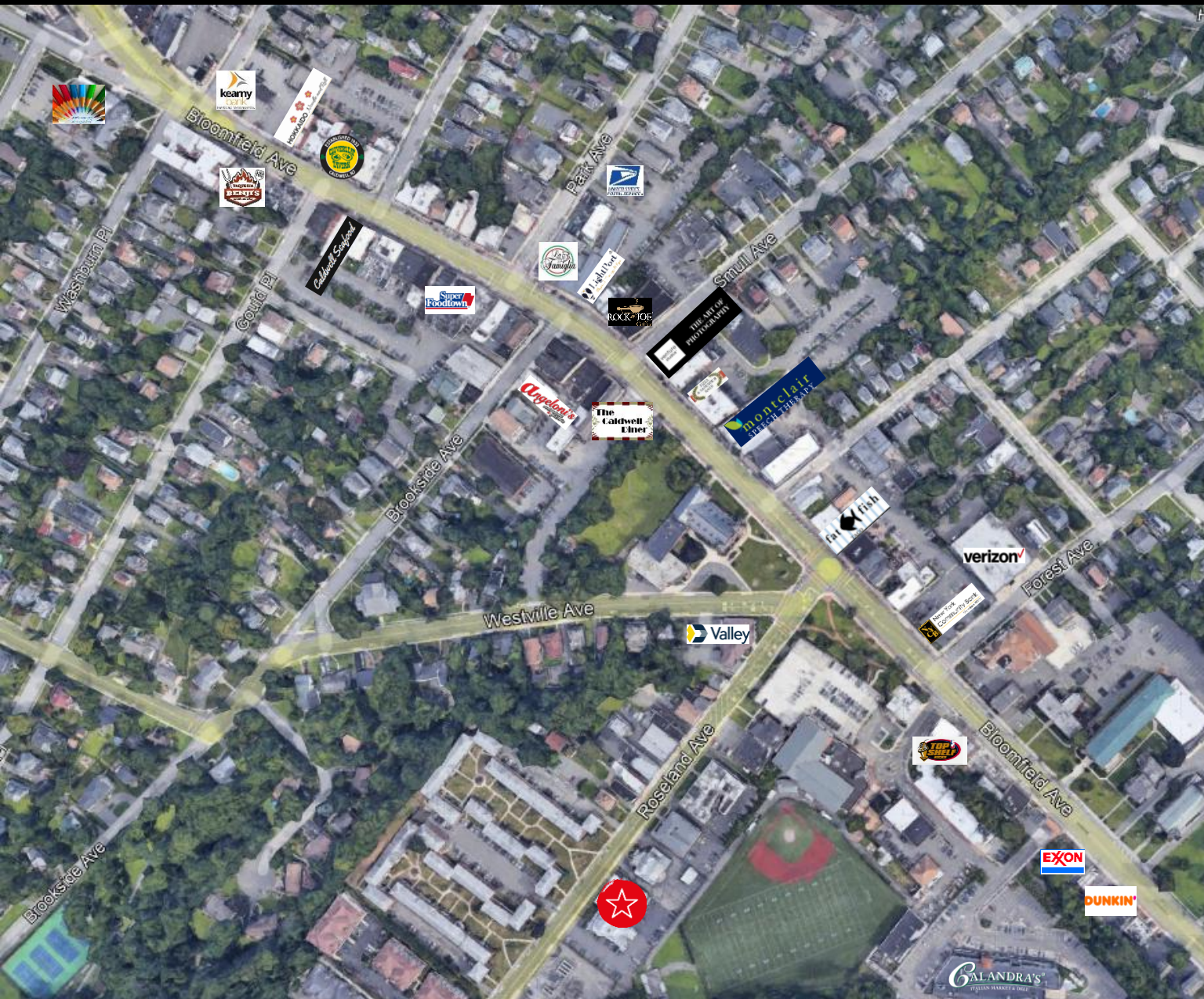
- Asking rent: Upon request

## Traffic Counts

- Roseland Avenue: 12,297 VPD
- Bloomfield Avenue: 22,454 VPD



# LOCAL AERIAL



## Demographics



**79,356**

Population



**\$139,061**

Med. HH Income



**46,970**

Employees



**4,745**

Businesses

Demographics taken within 3 miles  
Source: ESRI, 2023



Click or scan QR code to  
view interior of the space

## Contact

Craig Parcels  
Vice President  
Direct: +1 973 829 4780  
Mobile: +1 201 618 7223  
craig.parcels@jll.com

Although information has been obtained from sources deemed reliable, JLL does not make any guarantees, warranties or representations, express or implied, as to the completeness or accuracy as to the information contained herein. Any projections, opinions, assumptions or estimates used are for example only. There may be differences between projected and actual results, and those differences may be material. JLL does not accept any liability for any loss or damage suffered by any party resulting from reliance on this information. If the recipient of this information has signed a confidentiality agreement with JLL regarding this matter, this information is subject to the terms of that agreement. ©2023. Jones Lang LaSalle IP, Inc. All rights reserved.

