

Tower Medical Building

13520-13540 Hull Street, Midlothian, VA



3,645 to 12,336 SF Outpatient Medical Space Available for Lease beginning 1/1/27

Malcolm Randolph, SIOR
Senior Vice President
+1 804 267 7208
malcolm.randolph@colliers.com

John Carpin
Senior Vice President
+1 804 267 7216
john.carpin@colliers.com

Catherine Walker
Associate Vice President
+1 804 968 1978
catherine.walker@colliers.com

Colliers

20, 067 SF Class A Medical Building with Direct Frontage on Hull Street



Features

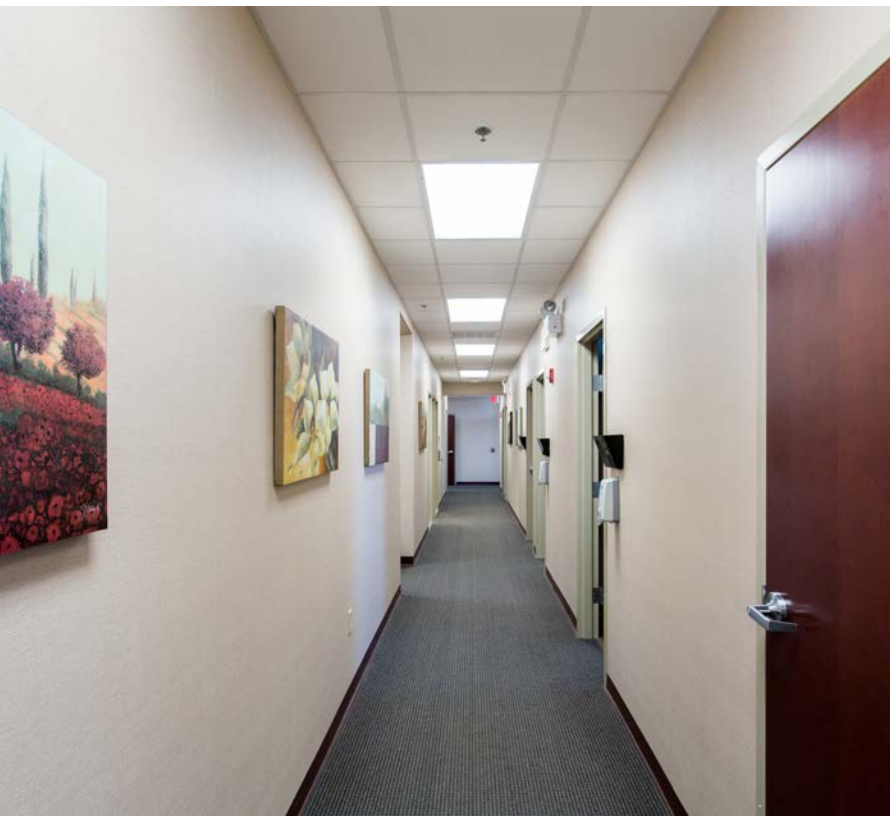
- Single Story outpatient medical building located on Hull Street
- 5.39/1,000 SF Parking
- 6 miles from St Francis Medical Center
- Beautiful architecture and landscaping

Available Suites:

- Suite 3540 - 12,336 SF
- Suite 3520 - 3,645 SF

Copyright © 2025 Colliers International. Information herein has been obtained from sources deemed reliable, however its accuracy cannot be guaranteed. The user is required to conduct their own due diligence and verification.

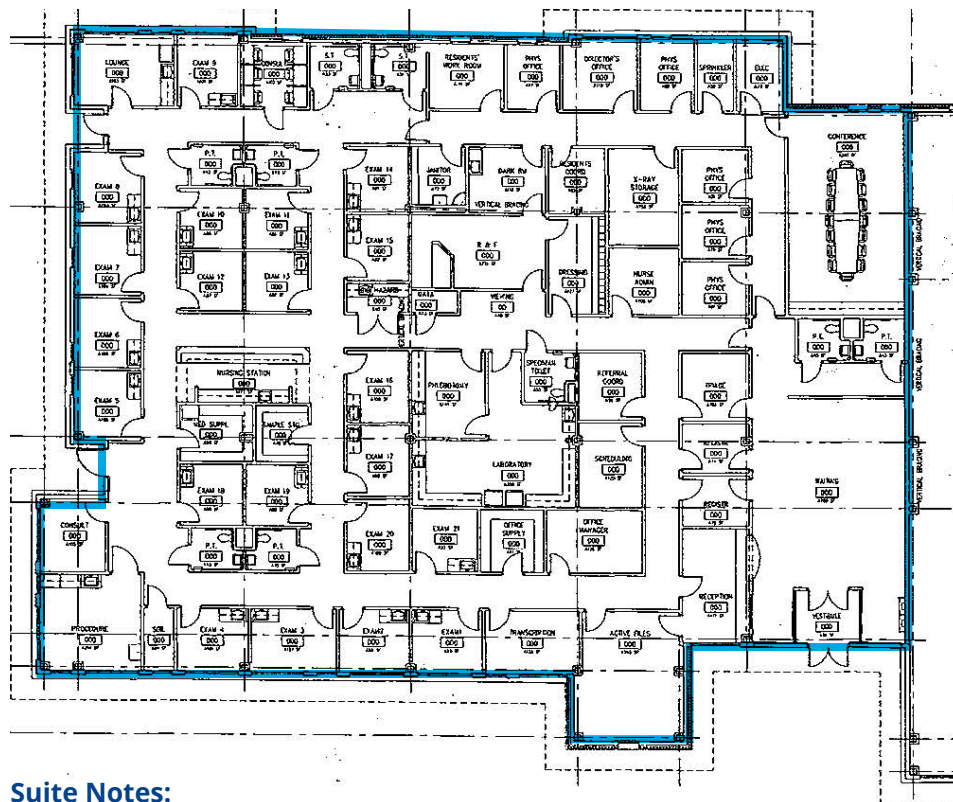
Tower Medical Building
Interior Photos



Tower Medical Building

Available Suites

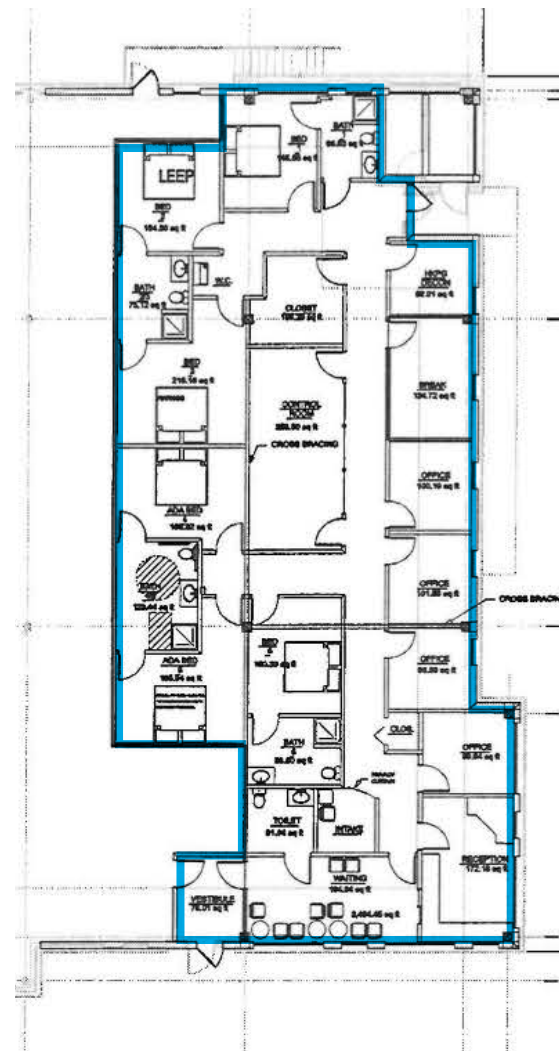
Suite 3540 - 12,336 SF



Suite Notes:

- 21 exams rooms
- 9 physician offices
- Lab
- X-ray room

Suite 3520 - 3,645 SF



Suite Notes:

- Currently designed for sleep disorder center
- 13 private rooms



Tower Medical Building

Demand Drivers



2024 Demographics

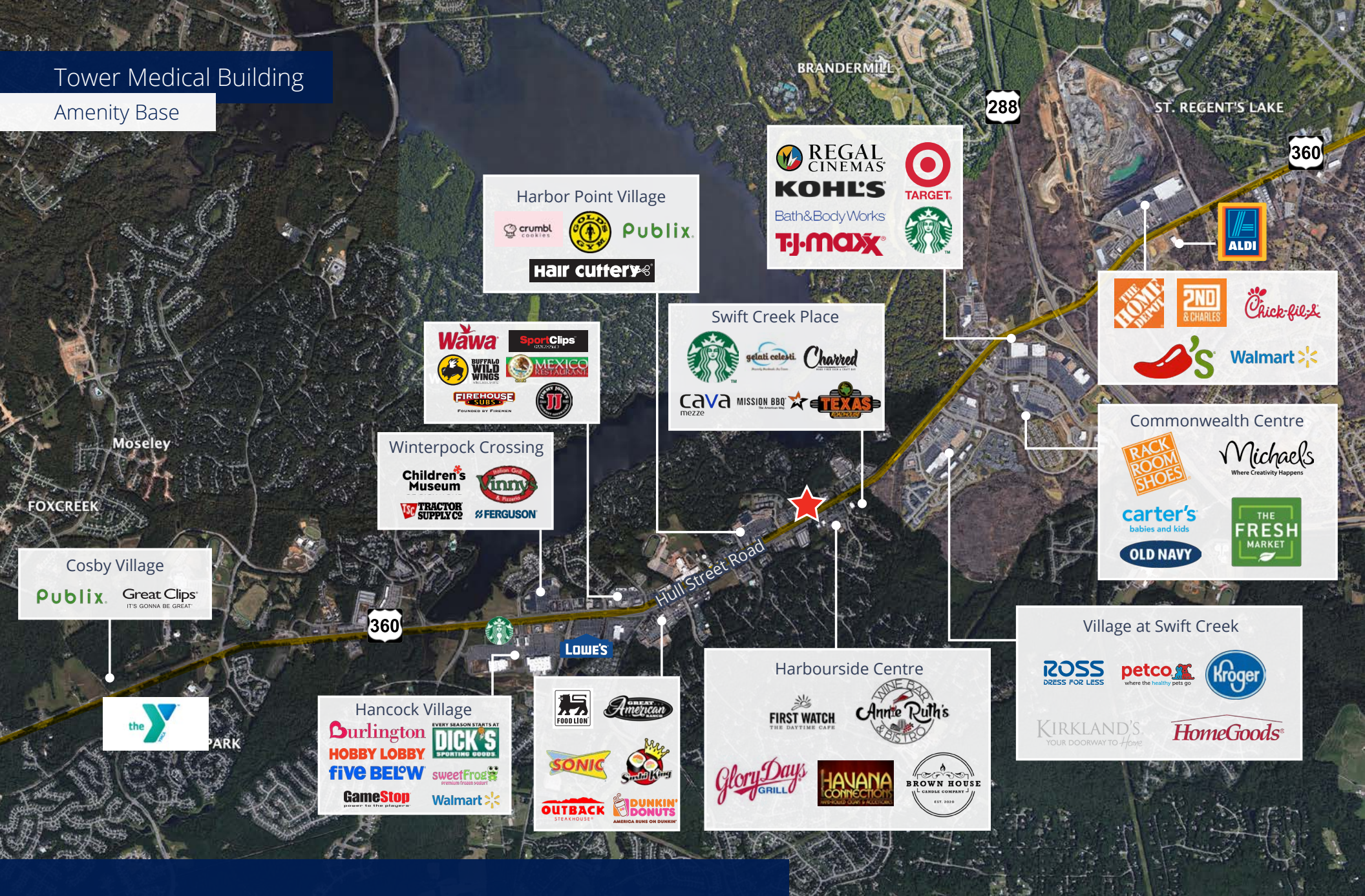
	1 miles	5 miles	10 miles
Population	6,272	110,912	296,027
Daytime Population	7,089	80,794	262,398
Households	2,667	40,256	110,703
Average Household Income	\$154,527	\$151,816	\$139,021

Traffic Counts

Hull Street Rd	77,000
----------------	--------

Tower Medical Building

Amenity Base



Malcolm Randolph, SIOR

Senior Vice President

+1 804 267 7208

malcolm.randolph@colliers.com

John Carpin

Senior Vice President

+1 804 267 7216

john.carpin@colliers.com

Catherine Walker

Associate Vice President

+1 804 968 1978

catherine.walker@colliers.com

Colliers