

3 ASPINWALL ROAD  
34 RESIDENTIAL CONDOMINIUMS  
UNDER CONSTRUCTION

**SITE**

20 DEDICATED  
PARKING SPACES



ASPINWALL RD

WASHINGTON ST 14,541 ADT

SOUTHERN AVE



DORCHESTER, MA

# 569 WASHINGTON STREET

4,500 SF + DEDICATED PARKING LOT AVAILABLE NOW



# PROJECT DETAILS

569 WASHINGTON ST • 4,500 SF + DEDICATED PARKING LOT | AVAILABLE NOW

## AVAILABLE SPACE

Available space: 4,500 SF + Dedicated Parking Lot (0.14 Acres)

## PROPERTY HIGHLIGHTS

- Former bank branch with dedicated parking
- Located on the corner of Washington Street and Aspinwall Rd
- Basement space available
- Available Now

## MARKET

Dorchester Center

## NEIGHBORING RETAIL

Walgreens, Rockland Trust, Bank of America, America's Food Basket, CVS, Daily Table, KFC

2024 DEMOGRAPHICS	0.5 MILES	1 MILE	1.5 MILES
TOTAL POPULATION	14,710	63,224	109,618
TOTAL HOUSEHOLDS	5,132	22,293	40,118
MEDIAN HH INCOME	\$74,311	\$68,947	\$69,099

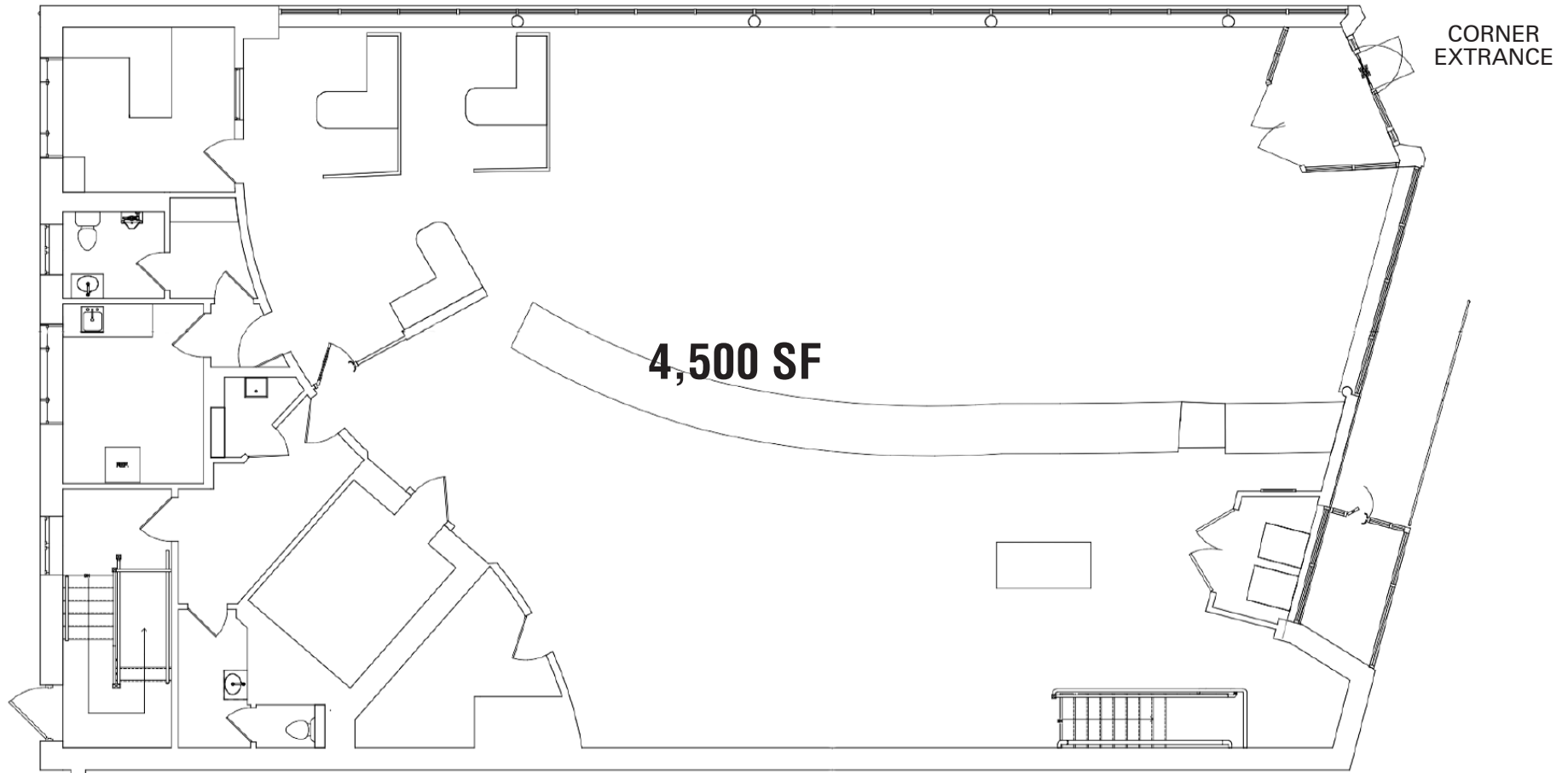


FLOOR  
PLAN

569 WASHINGTON ST • 4,500 SF + DEDICATED PARKING LOT | AVAILABLE NOW

FIRST FLOOR

ASPINWALL RD

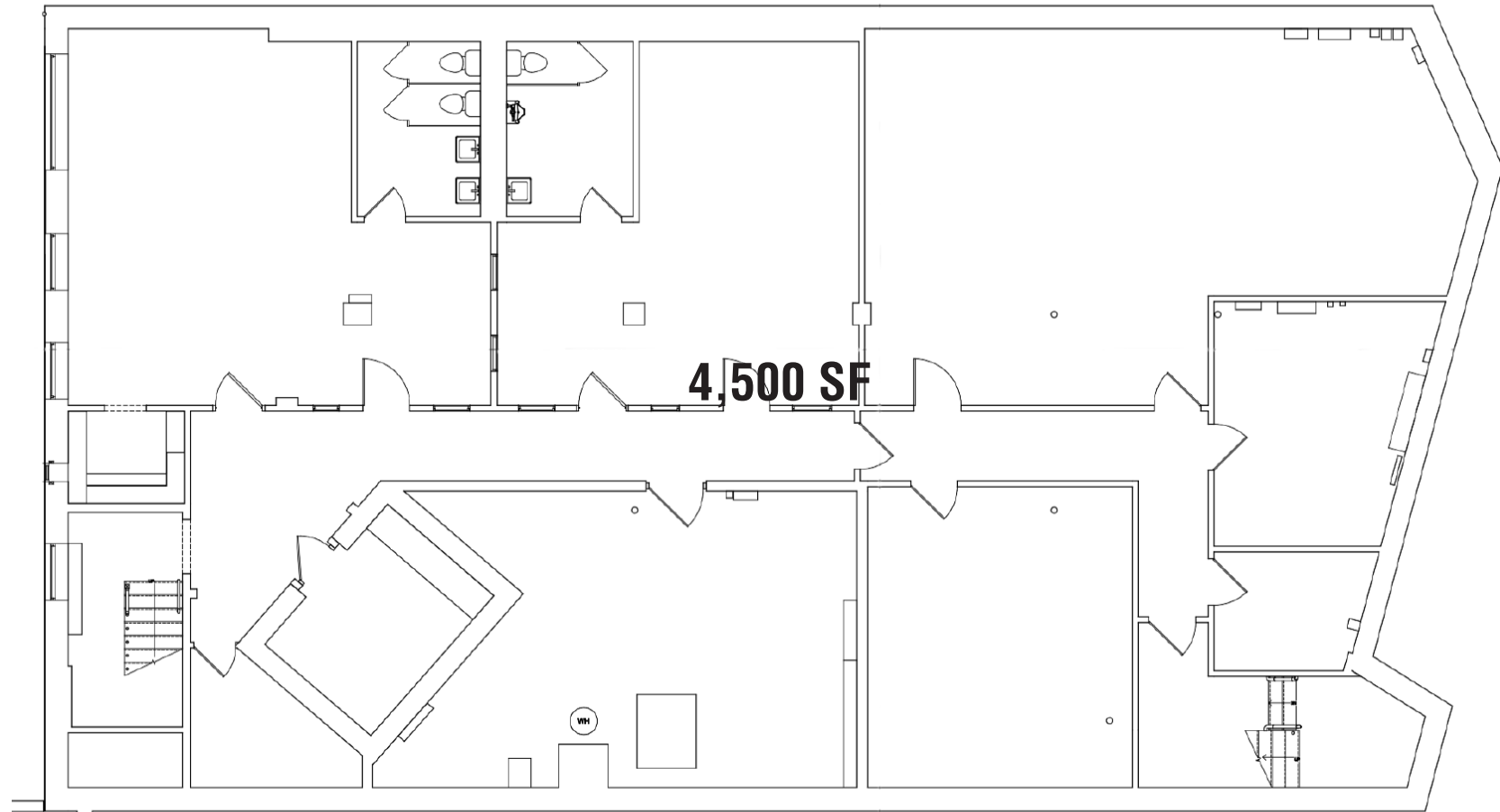


FLOOR  
PLAN

569 WASHINGTON ST • 4,500 SF + DEDICATED PARKING LOT | AVAILABLE NOW

BASEMENT FLOOR

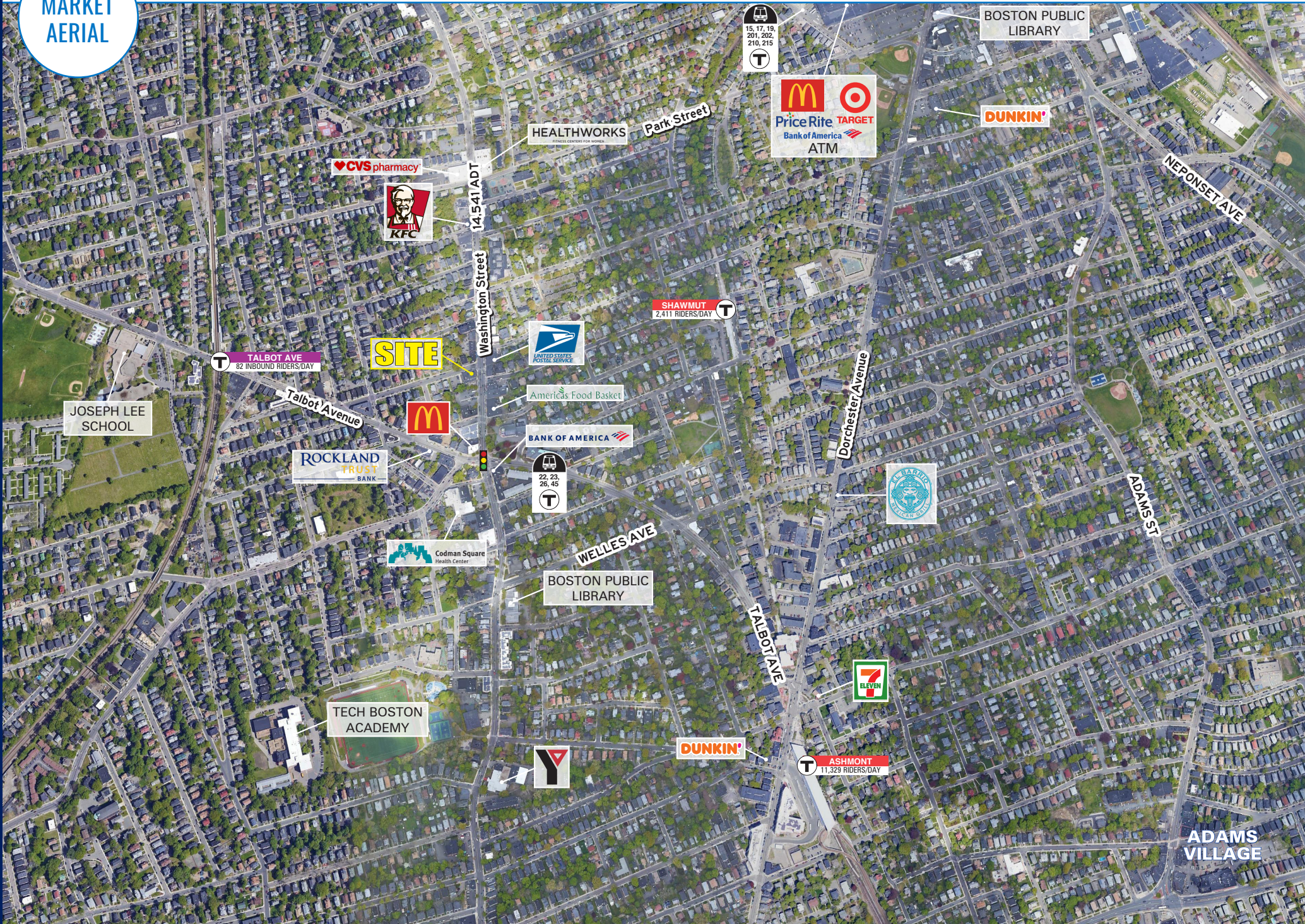
ASPINWALL RD

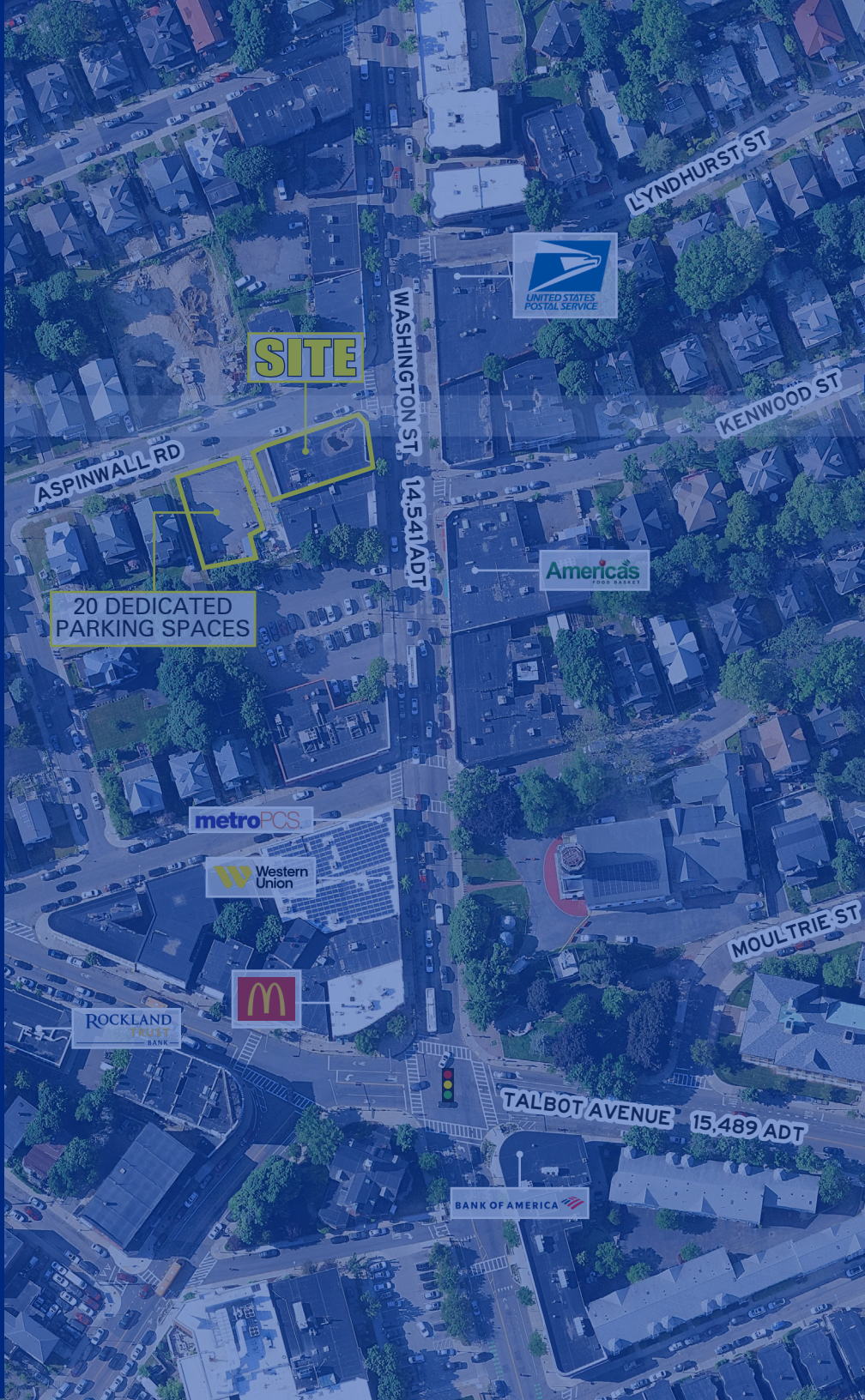


WASHINGTON STREET

MARKET AERIAL

569 WASHINGTON ST • 4,500 SF + DEDICATED PARKING LOT | AVAILABLE NOW





**SITE**

**20 DEDICATED  
PARKING SPACES**

DORCHESTER, MA

# 569 WASHINGTON ST

**4,500 SF + DEDICATED PARKING LOT | AVAILABLE NOW**

**SOPHIE MORRILL**

617.369.5926  
SMORRILL@ATLANTICRETAIL.COM

**LINDSEY SANDELL**

617.369.5936  
LSANDELL@ATLANTICRETAIL.COM



**ALBANY**

**ATLANTA**

**BOSTON**

THE PRUDENTIAL CENTER  
BOSTON, MA 02199  
617.239.3600

**CHARLOTTE**

**LOS ANGELES**

**NEW YORK CITY**

**ORLANDO**

**PITTSBURGH**

**WWW.ATLANTICRETAIL.COM**

[LINKEDIN.COM/COMPANY/ATLANTIC-RETAIL-PROPERTIES](https://www.linkedin.com/company/atlantic-retail-properties)

[INSTAGRAM.COM/ATLANTIC\\_RETAIL/](https://www.instagram.com/atlantic_retail/)

**CHAINLINKS**  
RETAIL ADVISORS