

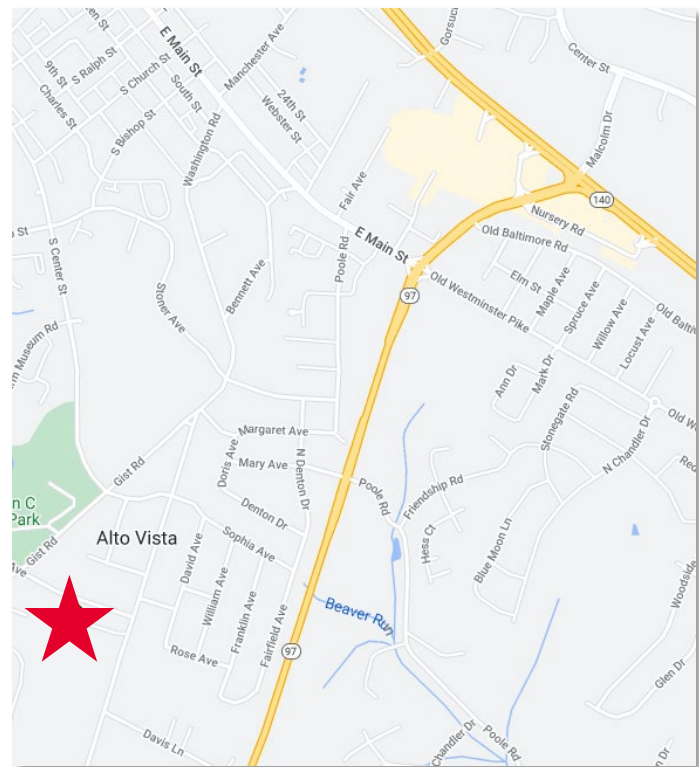
**FOR SUBLEASE**

**826 Washington Road  
Westminster, MD**



## SUBLEASE DETAILS

- 3,189 SF (Suite 112)
- Sublease term through March 2026
- Close proximity to Route 140 and I-97
- At grade patient drop-off
- Located .7 miles from Carroll Hospital Center
- Minutes from abundant amenities



## CONTACT

Douglas Brinkley | [douglas.brinkley@cushwake.com](mailto:douglas.brinkley@cushwake.com) | +1 410 347 1140  
Alex Light | [alex.light@cushwake.com](mailto:alex.light@cushwake.com) | +1 410 864 3552



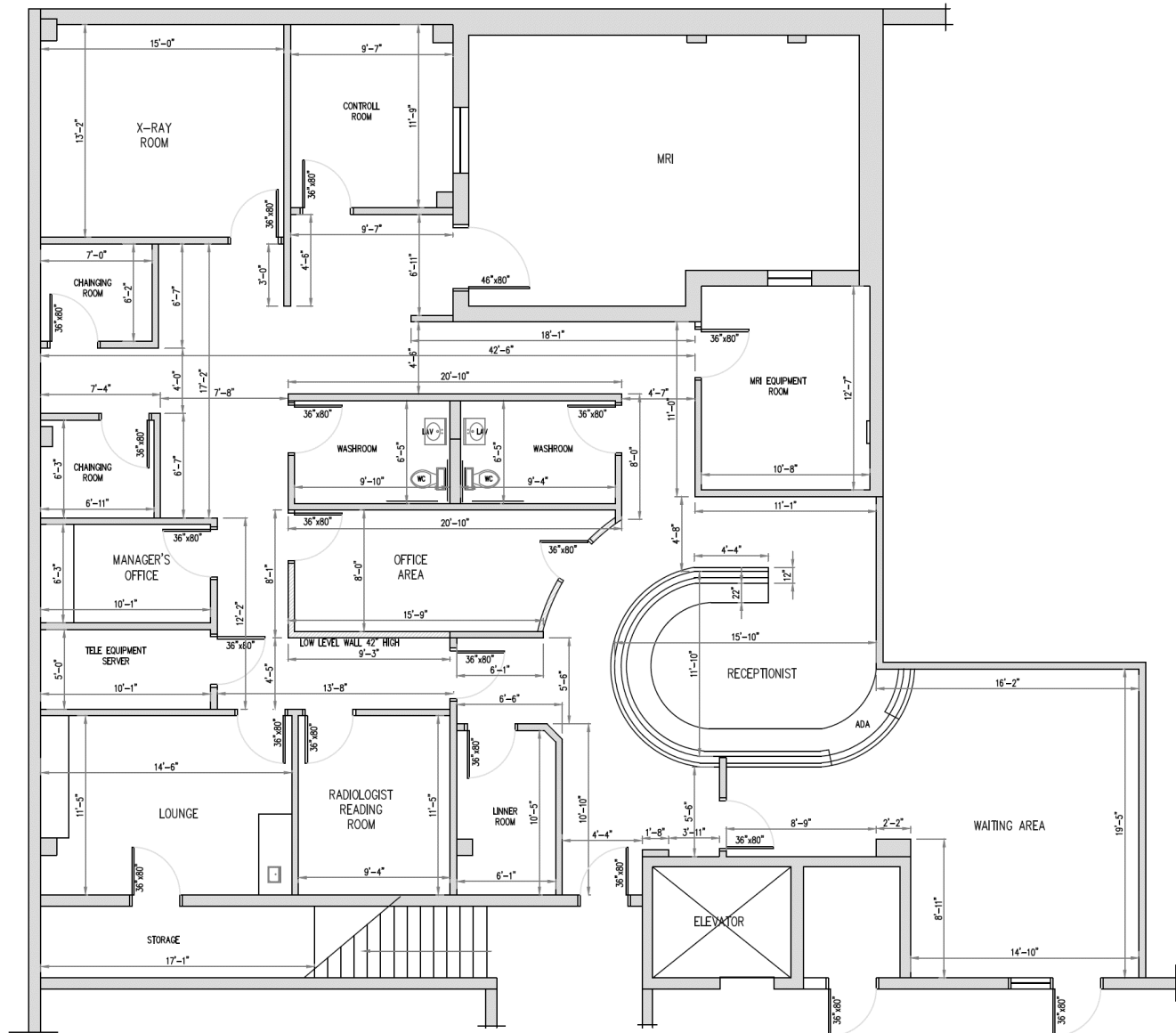
# FOR SUBLEASE

## 826 Washington Road

### Westminster, MD

## FLOOR PLAN

3,189 SF (Suite 112)



### CONTACT

Douglas Brinkley | [douglas.brinkley@cushwake.com](mailto:douglas.brinkley@cushwake.com) | +1 410 347 1140

Alex Light | [alex.light@cushwake.com](mailto:alex.light@cushwake.com) | +1 410 864 3552



**FOR SUBLEASE**

**826 Washington Road**

**Westminster, MD**



**CONTACT**

Douglas Brinkley | [douglas.brinkley@cushwake.com](mailto:douglas.brinkley@cushwake.com) | +1 410 347 1140

Alex Light | [alex.light@cushwake.com](mailto:alex.light@cushwake.com) | +1 410 864 3552

