

# 8400 Ronda Drive

CANTON, MI 48187

**50,636-SF INDUSTRIAL BUILDING AVAILABLE FOR LEASE**



**NEWMARK**

**TOM OLDHAM**

*Senior Managing Director*

248-357-6595

[Tom.Oldham@nmrk.com](mailto:Tom.Oldham@nmrk.com)

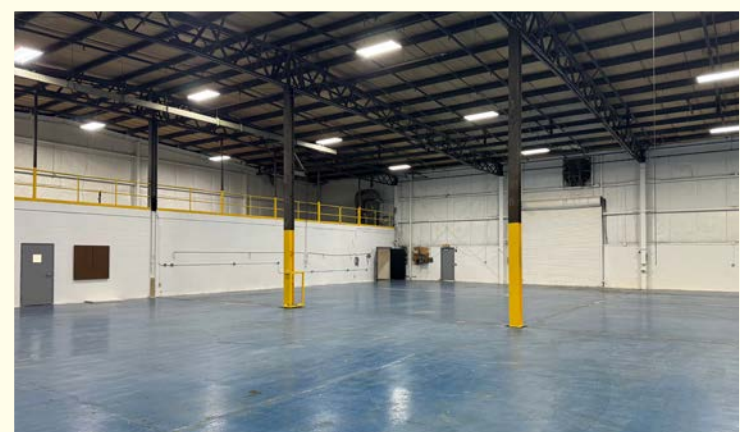
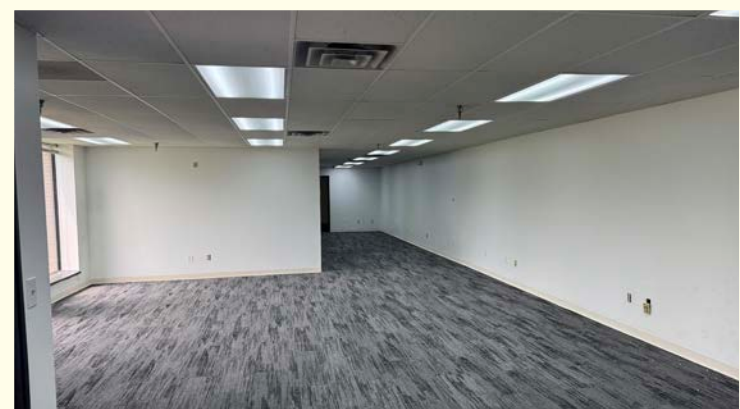
**MORGAN KATZ**

*Associate*

248-892-0283

[Morgan.Katz@nmrk.com](mailto:Morgan.Katz@nmrk.com)





## PROPERTY HIGHLIGHTS

- 50,636 SF available
- 2,400 SF renovated office with overhead mezzanine
- 1000 amps, 480/277 volts, 3 phase
- ESFR Fire Suppression
- 20'-23' clear height
- New LED lights in shop and office
- (3) 14'x14' grade level doors
- 3 exterior truckwells
- Minutes from I-96, I-275 and M-14



# LOCATION





**8400 Ronda Drive**  
CANTON, MI 48187



FOR MORE INFORMATION CONTACT:

**TOM OLDHAM**

*Senior Managing Director*

248-357-6595

Tom.Oldham@nmrk.com

**MORGAN KATZ**

*Associate*

248-892-0283

Morgan.Katz@nmrk.com

**NEWMARK**

The information contained herein has been obtained from sources deemed reliable but has not been verified and no guarantee, warranty or representation, either express or implied, is made with respect to such information. Terms of sale or lease and availability are subject to change or withdrawal without notice.

## Lease

8400 Ronda Dr Canton, MI 48187



### Pricing Information:

<b>Lease Rate Range:</b>	\$7.25 NNN
<b>Lease Type:</b>	NNN
<b>Sale Price:</b>	N/A
<b>Price per SF:</b>	N/A
<b>Real Estate Taxes psf:</b>	\$1.32
<b>Building Insurance psf:</b>	\$0.00
<b>CAM psf:</b>	N/A

### Property Details:

<b>Total Building Area:</b>	50,636 sf
<b>Min/Max Available:</b>	50,636 sf
<b>Office Area:</b>	2,400 sf
<b>Property Type:</b>	General Industrial
<b>Tenancy:</b>	Multi-tenant
<b>Year Built:</b>	01/01/1998
<b>Year Renovated:</b>	
<b>Zoning:</b>	
<b>Site/Parcel Area:</b>	5.50 acres

<b>Parcel ID:</b>	71-005-02-0012-000
<b>Parking Description:</b>	
<b>Rail Served:</b>	No
<b>Cranes:</b>	No
<b>Heat:</b>	N/A
<b>Clear Height Min/Max:</b>	20.0 - 23.0 '
<b>Grade/Dock Doors:</b>	3 / 3
<b>Sprinkler:</b>	Yes
<b>Power:</b>	1,000 amps, 480/277 volt

### Comments:

50,636 SF available. 2,400 SF renovated office with overhead mezzanine. 1000 amps, 480/277 volts, 3 phase. 20'-23' clear height. New LED lights in shop and office. ESFR Fire Suppression. (3) 14'x14' grade level doors. 3 exterior truckwells. Minutes from I-96, I-275 and M-14.

#### Thomas Oldham

248.357.6595

[Tom.Oldham@nmrk.com](mailto:Tom.Oldham@nmrk.com)

#### Morgan Katz

248.871.2305

[Morgan.Katz@nmrk.com](mailto:Morgan.Katz@nmrk.com)

