

# Industrial Building For Sale – 1455 Harrison Road Salisbury, NC



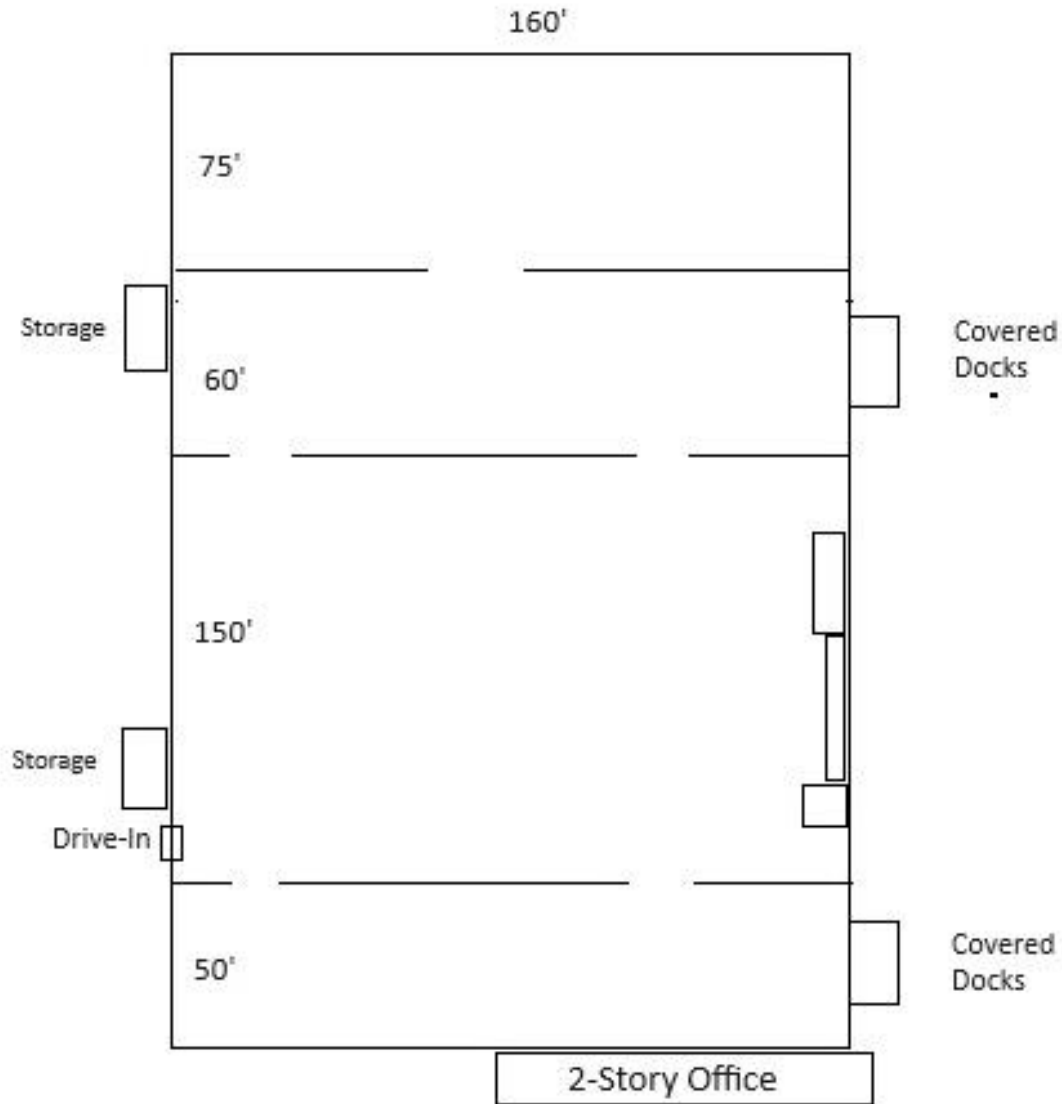
## Property Highlights

- **Asking Price:** \$2,500,000
- **Property Size:** 59,776 SF
- **Office SF:** 6,912 SF
- **Acreage:** 10.05 Acres
- **Year Built:** 1983
- **Docks:** Four (4) External covered dock positions
- **Drive-Ins:** One (1) 12' X 10'
- **Clear Height:** 10' – 11'
- **Column Spacing:** 40' X 25'; one section 40' X 20'
- **Power:** 277 / 480 Volt Service
- **Structure/Exterior:** Masonry on office /Metal on warehouse
- **Roof:** Metal
- **Building Dimensions:** 160' x 335' – warehouse
- **Zoning:** LI – Light Industrial
- **Drive Time:**
  - Interstate 85- 4.3 Miles
  - US Highway 70- 2.5 Miles
- [Click here for link to drone video](#)



Chris Neal  
704.287.7120  
chris@selwynpropertygroup.com

# Industrial Building For Sale – 1455 Harrison Road Salisbury, NC



Chris Neal  
704.287.7120  
chris@selwynpropertygroup.com



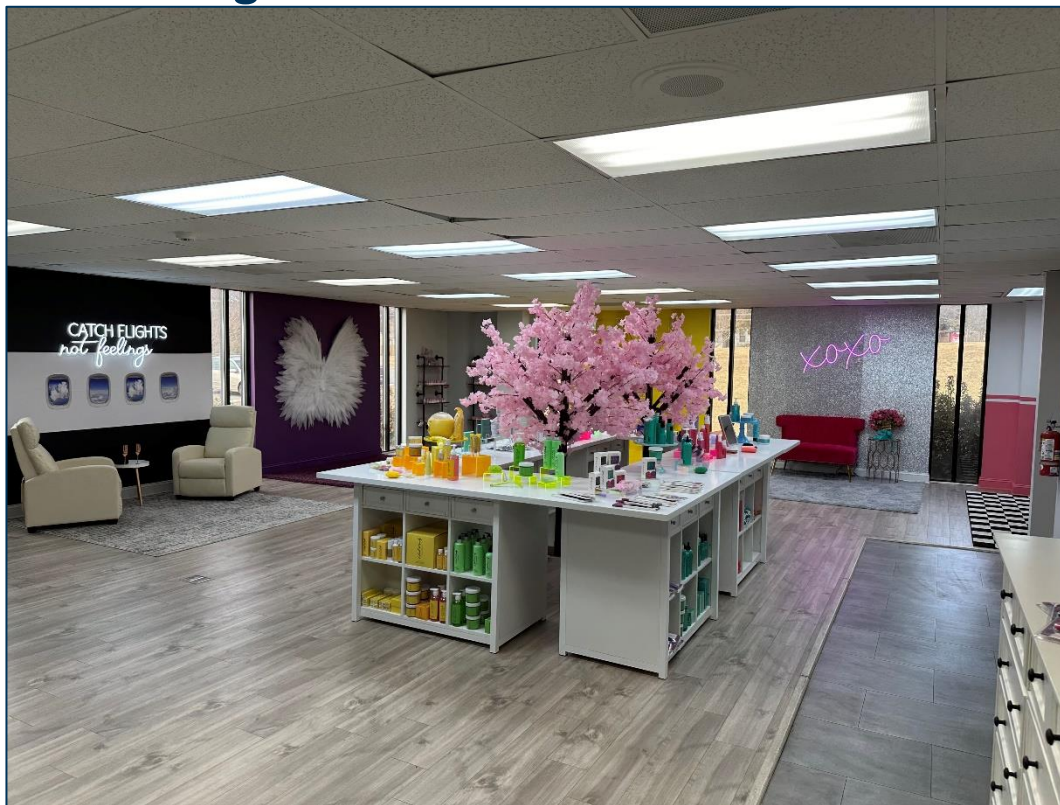
# Industrial Building For Sale – 1455 Harrison Road Salisbury, NC



Chris Neal  
704.287.7120  
[chris@selwynpropertygroup.com](mailto:chris@selwynpropertygroup.com)



# Industrial Building For Sale – 1455 Harrison Road Salisbury, NC



Chris Neal  
704.287.7120  
[chris@selwynpropertygroup.com](mailto:chris@selwynpropertygroup.com)