

BUILDING SPACE FOR LEASE

1213 FRANKLIN AVE
ASTORIA, OR 97030

1465 SF OFC | \$16.00 Gross
1495 SF GAR | \$9.00 Gross



Craig Gilbert
503-313-8282

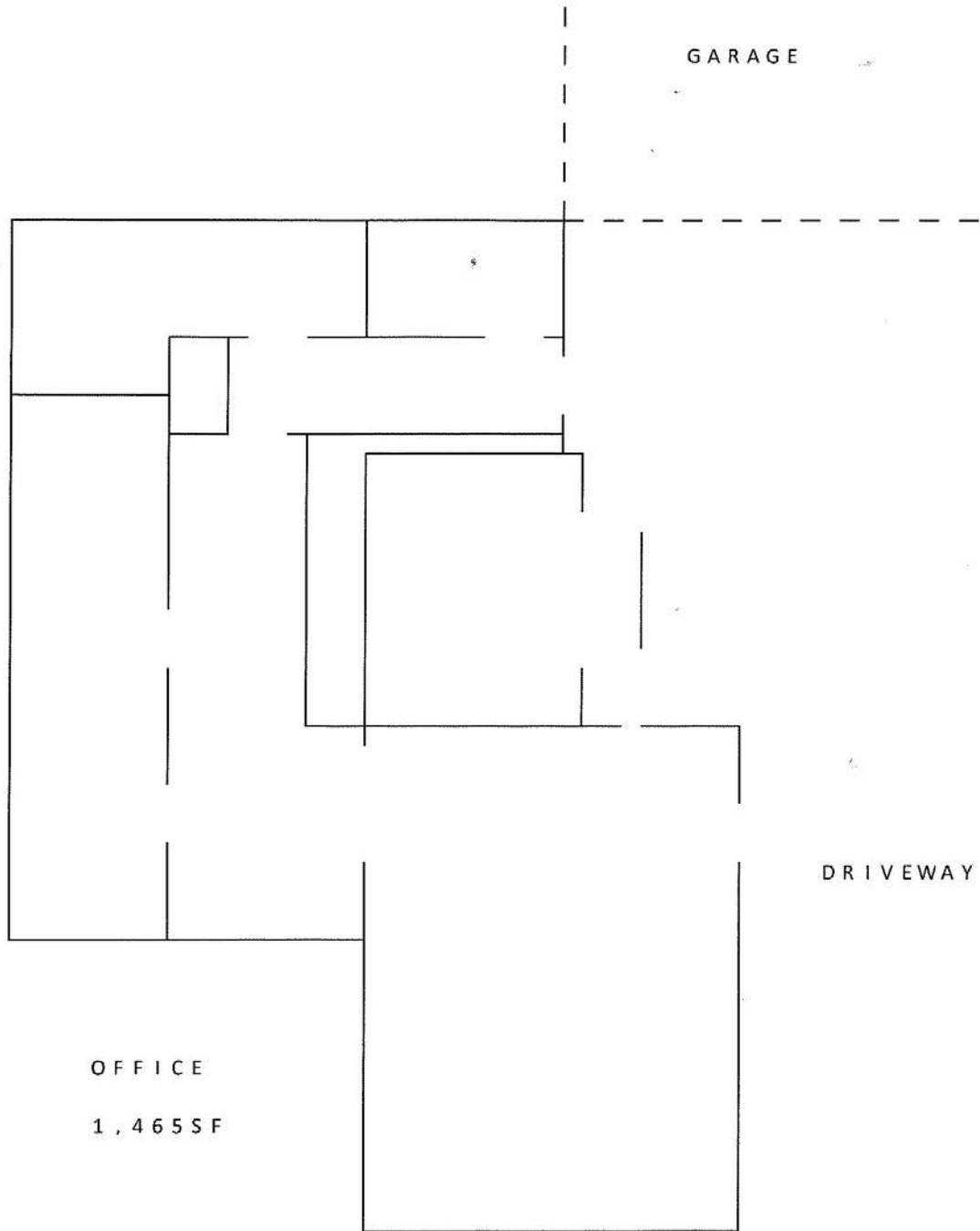


WINDERMERE COMMUNITY COMMERCIAL REALTY
2105 NE CESAR E CHAVEZ BLVD, SUITE 220
PORTLAND, OR 97212
503-249-1706

- ❖ Office and Storage can be rented together or individually or rented w/storage or rented individually.
- ❖ Space in good condition
- ❖ Utilities recently upgraded
- ❖ TI's negotiable

BUILDING SPACE FOR LEASE

1490 COMMERCIAL ST.
ASTORIA, OR 97103



Craig Gilbert
503-313-8282

FRANKLIN

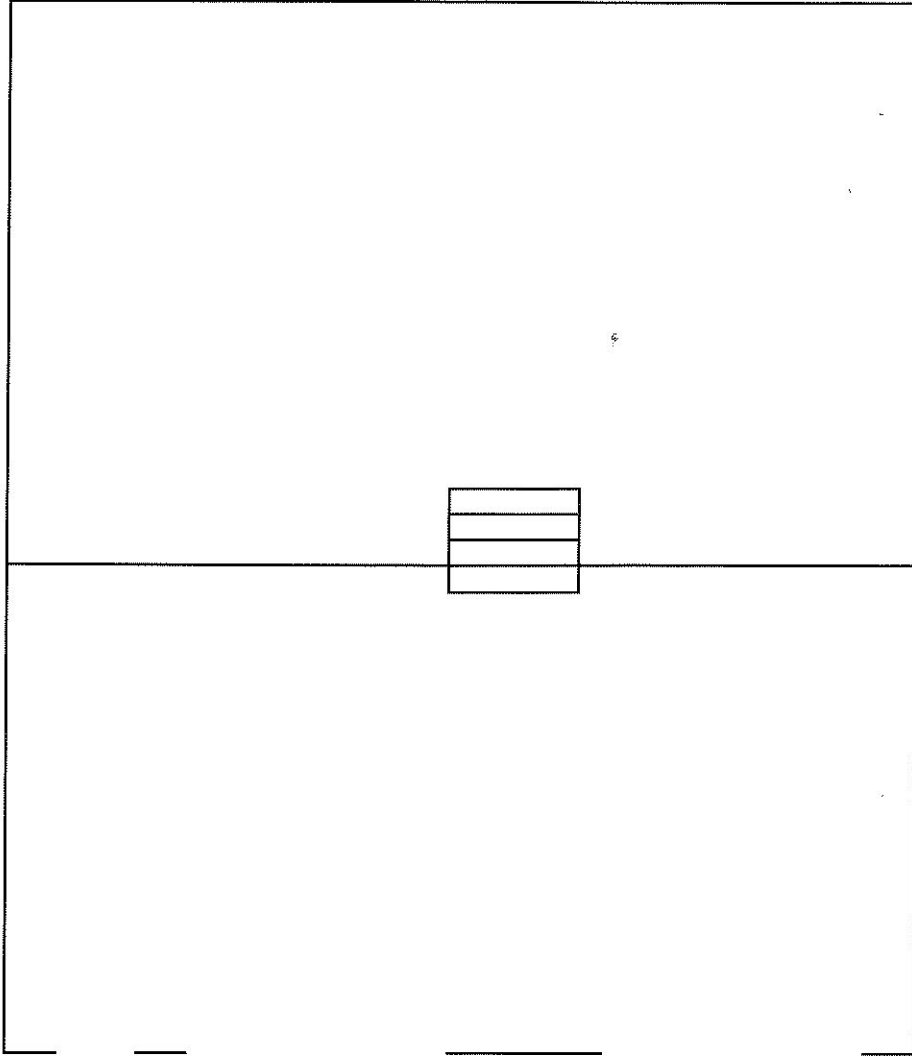
FLOOR PLAN #1



WINDERMERE COMMUNITY COMMERCIAL REALTY
2105 NE CESAR E CHAVEZ BLVD, SUITE 220
PORTLAND, OR 97212
503-249-1706

BUILDING SPACE FOR LEASE

1490 COMMERCIAL ST.
ASTORIA, OR 97103



G A R A G E

3 4 W X 4 4 D

1 , 4 9 6 S F



Craig Gilbert
503-313-8282



WINDERMERE COMMUNITY COMMERCIAL REALTY
2105 NE CESAR E CHAVEZ BLVD, SUITE 220
PORTLAND, OR 97212
503-249-1706

FLOOR PLAN #2