

# Food Lion Plaza: 13 Cloniger Dr. Thomasville, NC



+/- 2,800 SF Available

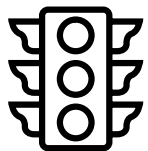


# Co-Tenants

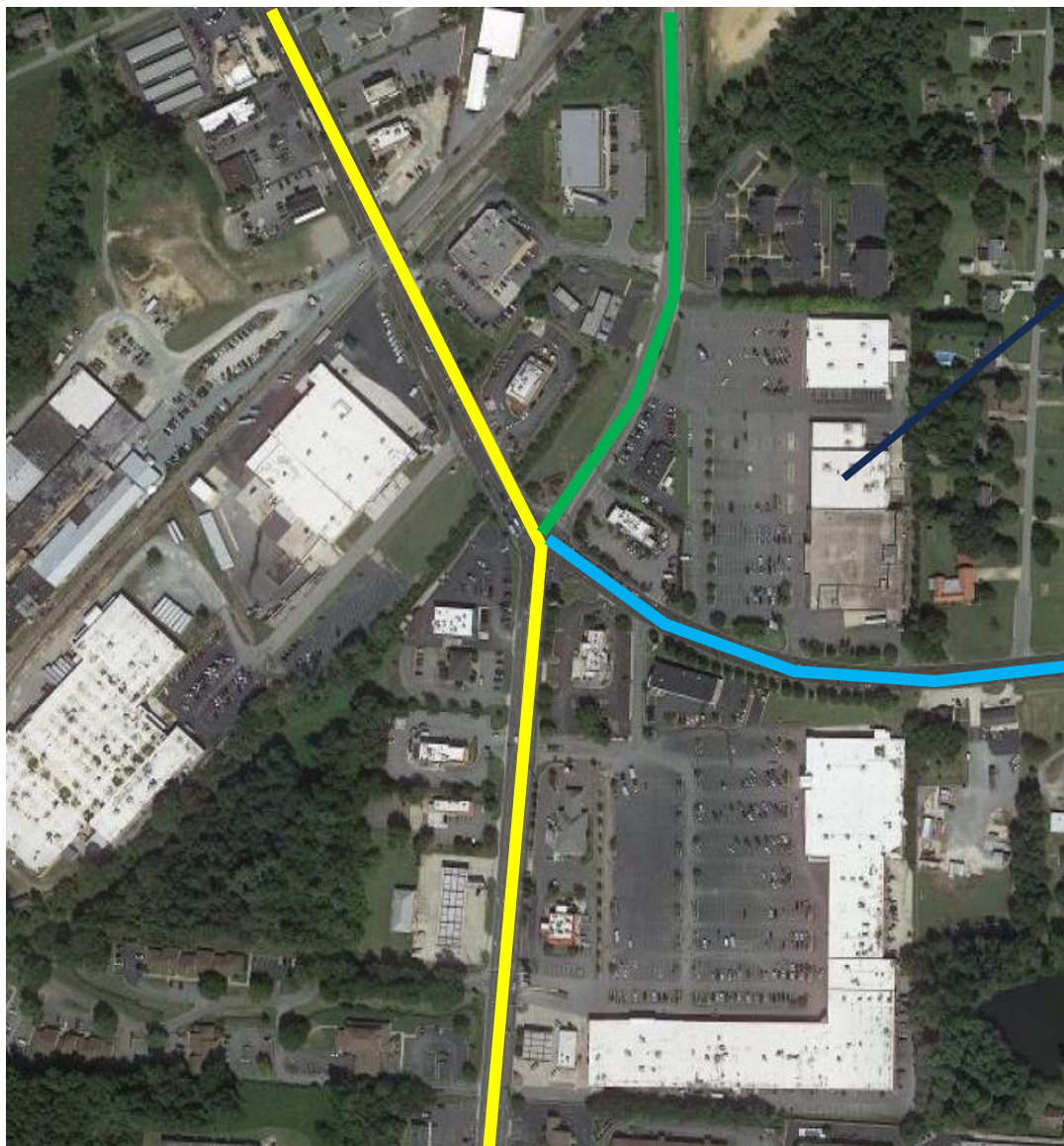


Space	Tenant
Suite A	2,800 SF Available
Suite B & C	Carolina Renovation Warehouse
Suite D	City Electric Supply
Suite E	Food Lion



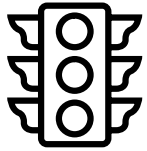


# Traffic Count

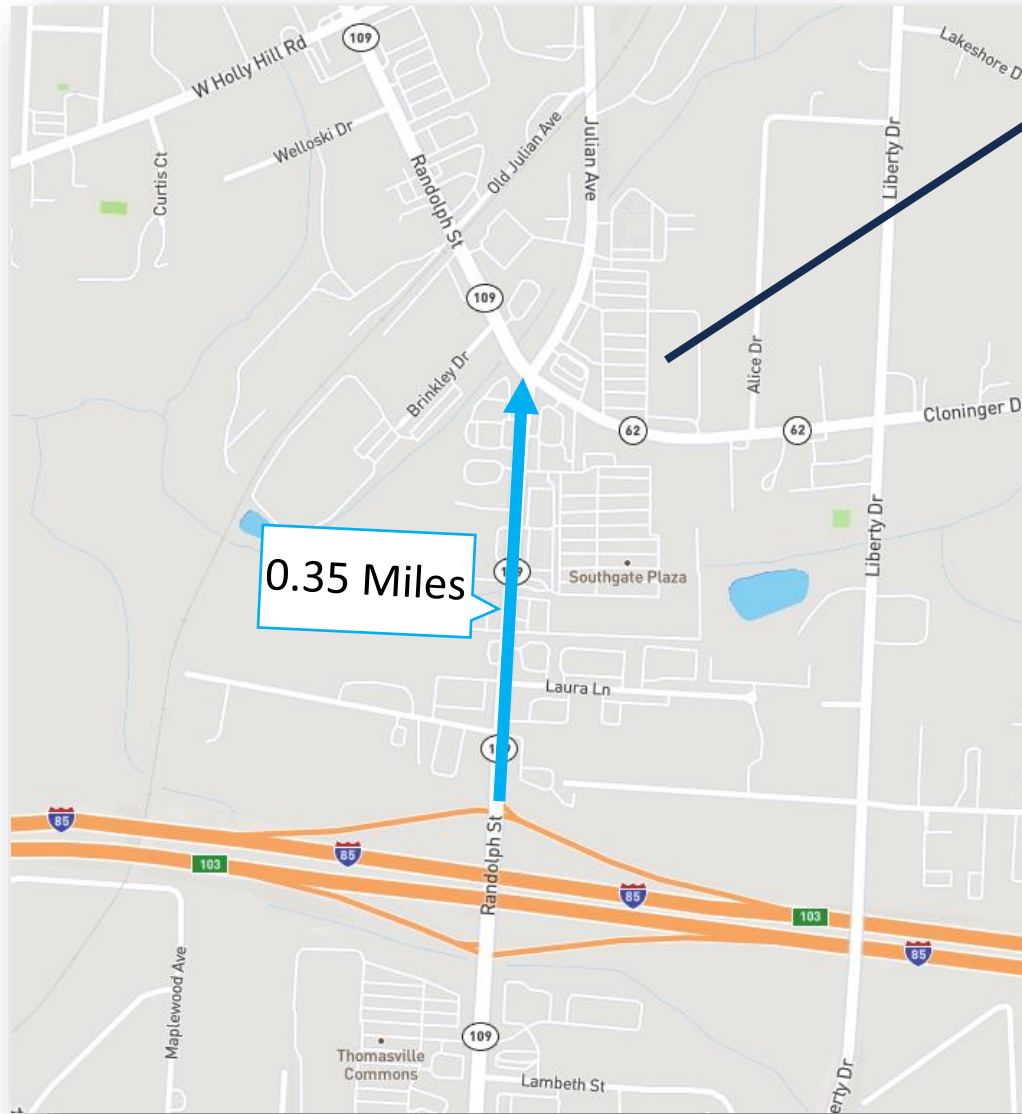


Food Lion Plaza

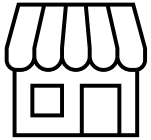
Color	Street	Vehicles Per Day
Yellow	Randolph St	19,347
Green	Julian Ave	9,600
Blue	Cloninger Dr	9,201



# Proximity to Interstate 85



Food Lion Plaza



# Retail Corridor

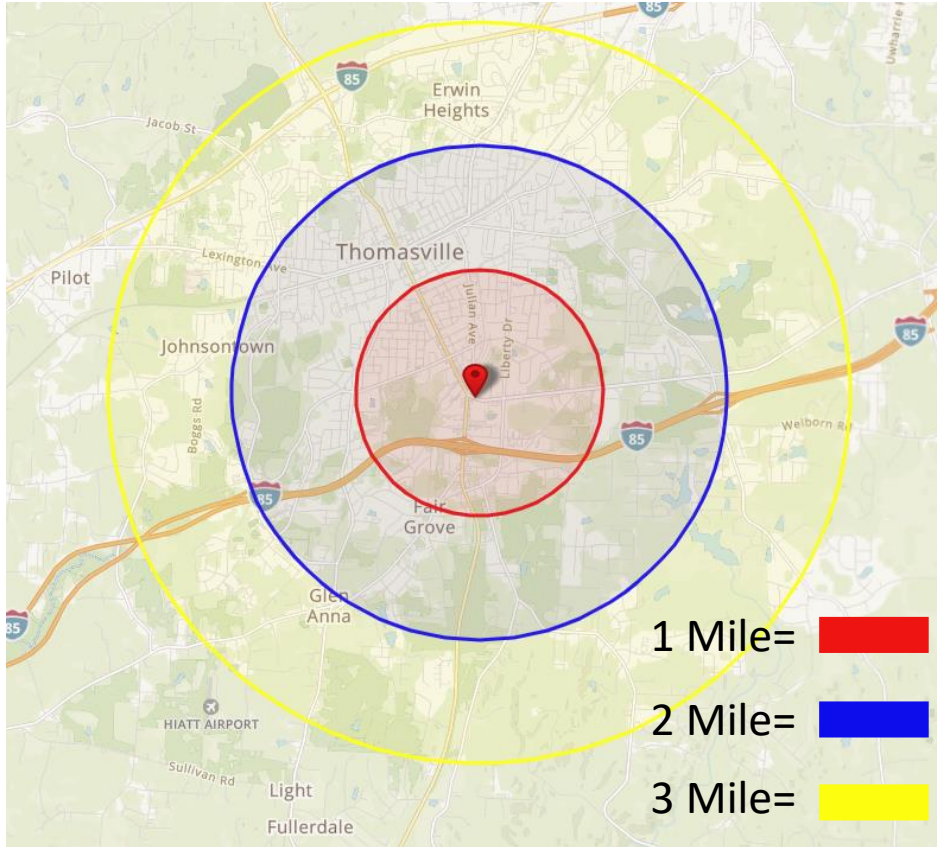


Food Lion Plaza





# Demographics



Population Summary				
2023 Estimated Population	5,090	18,445		31,696
2028 Projected Population	5,217	18,725		32,236
Population Growth 2023-2028	2.49%	1.52%		1.70%

Age 0 - 18	1,138	22%	4,204	23%	7,019
Age 18 - 35	1,097	22%	3,889	21%	6,500
Age 35 - 50	979	19%	3,347	18%	5,680
Age 50 - 65	992	19%	3,614	20%	6,350
Age 65+	884	17%	3,391	18%	6,146
Median Age	40.0		40.2		41.3

Population by Race					
White	2,962	58%	10,879	59%	19,840
Black	784	15%	3,491	19%	5,488
Asian	81	2%	270	1%	443
Hispanic	977	19%	2,884	16%	4,443
Other	287	6%	920	5%	1,481

Population Age 25+ by Educational Attainment					
Some College or Lower	2,781	79%	9,835	78%	16,623
Associates Degree or Higher	730	21%	2,790	22%	5,311

Household Summary					
2023 Estimated Households	2,150		7,507		12,804
2028 Projected Households	2,201		7,615		13,015
Population Growth 2023-2028	2.37%		1.44%		1.65%

Less than \$25,000	663	31%	1,968	26%	2,992
\$25,000 - \$49,999	627	29%	2,330	31%	3,707
\$50,000 - \$74,999	446	21%	1,530	20%	2,839
\$75,000 - \$124,999	348	16%	1,296	17%	2,414
\$125,000 or more	66	3%	385	5%	852

Median Household Income	\$38,536		\$41,352		\$47,051
Median Disposable Income	\$33,977		\$36,144		\$40,755
Median Home Value	\$174,350		\$195,181		\$213,438

