

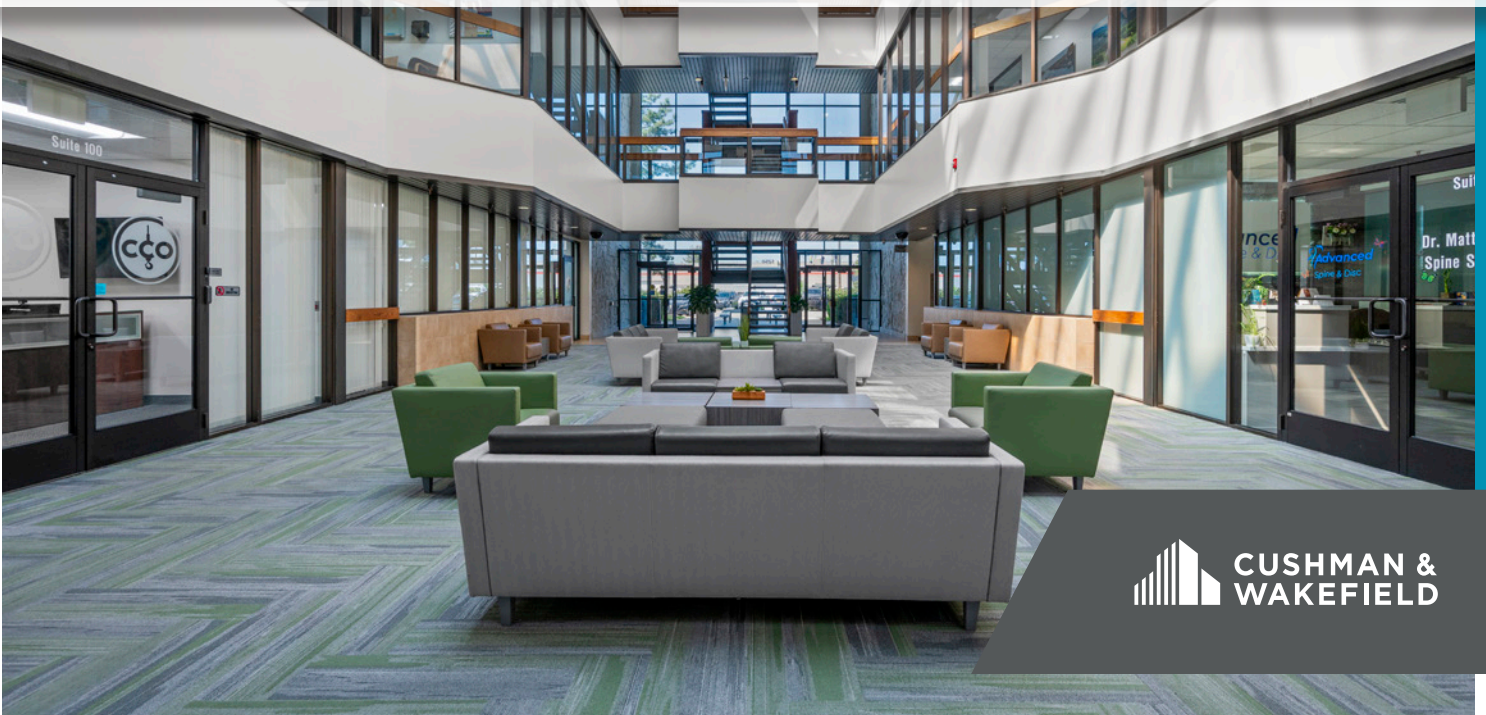


# THE ATRIUM BUILDING

## 5250 COMMERCE DRIVE

---

### MURRAY, UTAH



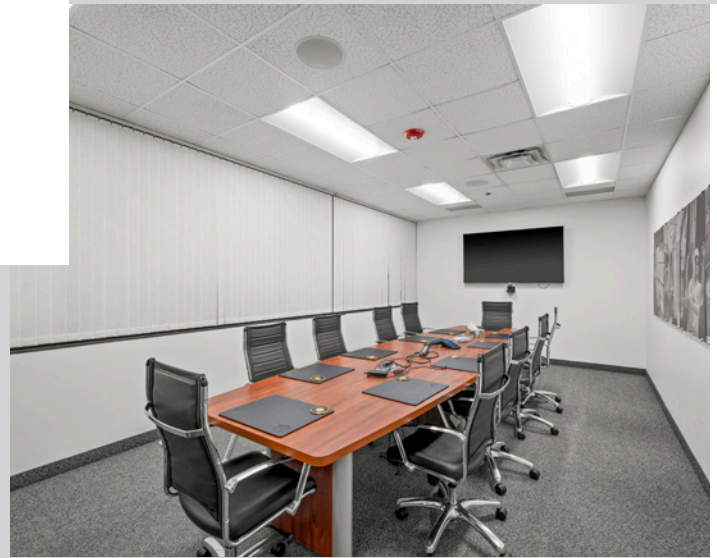


FOR LEASE

# 5250 COMMERCE DRIVE

## Property Highlights

- Available Now
- Rate: \$22.00 per square foot, full-service gross
  - Newly renovated lobby and exterior
  - Move-in ready
  - Food truck access
  - Professional property management
  - Easy access to I-15



### Melina Miramontes

Director  
D +1 801 303 5435 M +1 801 750 4701  
melina.miramontes@cushwake.com

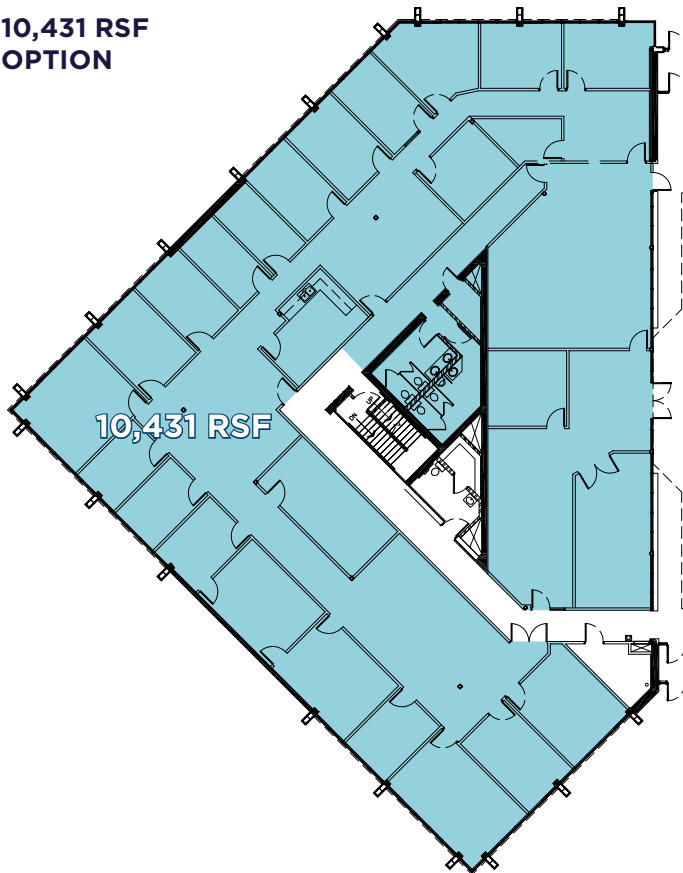
### Jesse Mangum

Managing Director  
D +1 801 303 5547 M +1 801 440 9787  
jesse.mangum@cushwake.com

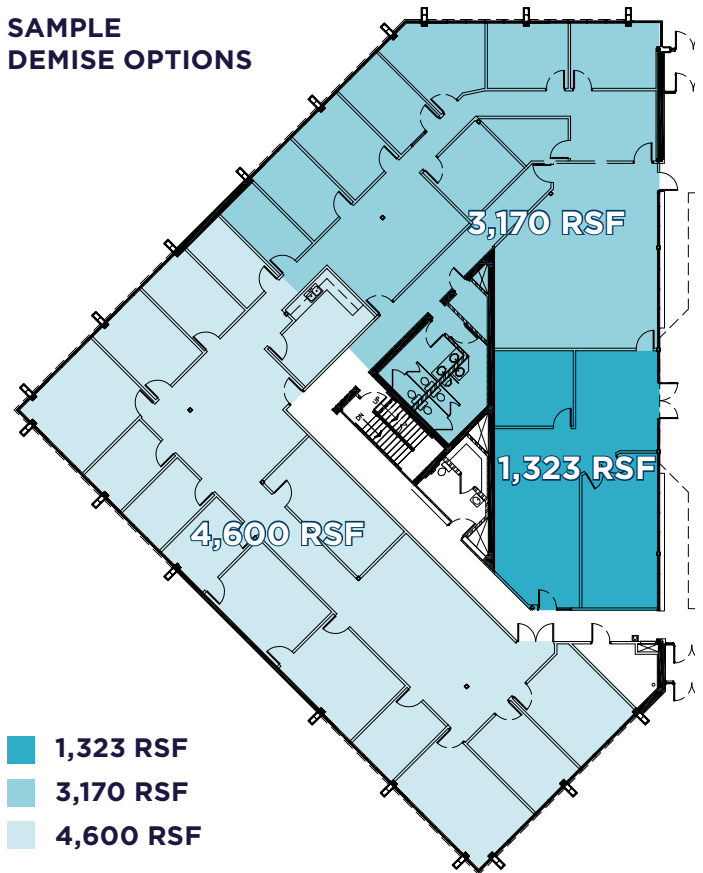
170 South Main Street, Suite 1600  
Salt Lake City, UT 84101  
+1 801 322 2000  
cushmanwakefield.com

# FIRST FLOOR

10,431 RSF  
OPTION



SAMPLE  
DEMISE OPTIONS





FOR LEASE

# 5250 COMMERCE DRIVE

MURRAY, UTAH



## Melina Miramontes

Director

D +1 801 303 5435 M +1 801 750 4701

melina.miramontes@cushwake.com

## Jesse Mangum

Managing Director

D +1 801 303 5547 M +1 801 440 9787

jesse.mangum@cushwake.com



CUSHMAN &  
WAKEFIELD