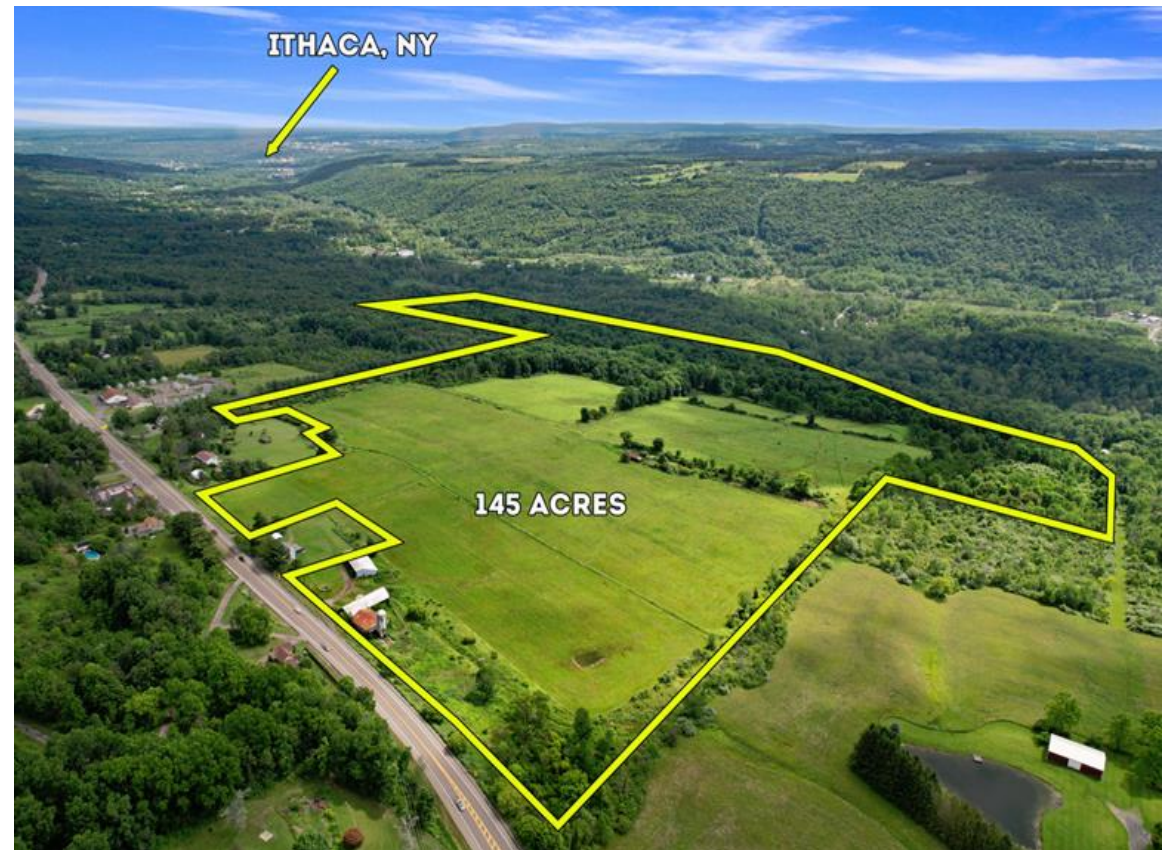


FOR SALE**Property Highlights**

- Sprawling 145 acres just 4 miles outside [south] of Ithaca on Elmira Road / NYS Route 13 comprised of meadows and woods to include trails, small ponds, stream, and waterfall.
- 1,141' of frontage on Route 13
- Great vista views of hills to east of property
- Wooded areas offer potential for logging
- Located on property are several barns and sheds
- Municipal water available
- Range of potential uses
- Click [HERE](#) to view Property Video

Location Highlights

- Ithaca Area has one of the strongest, growing economies in the State "anchored by" educational sector - Cornell University and Ithaca College - plus strong health care, tech & tourism industries.

**EXCLUSIVE CONTACT**

David G. Huckle, SIOR
Associate Real Estate Broker
+1 607 227 7558
dhuckle@pyramidbrokerage.com

414 East Upland Road, Suite C
Ithaca, New York 14850
+1 607 277 2327
pyramidbrokerage.com

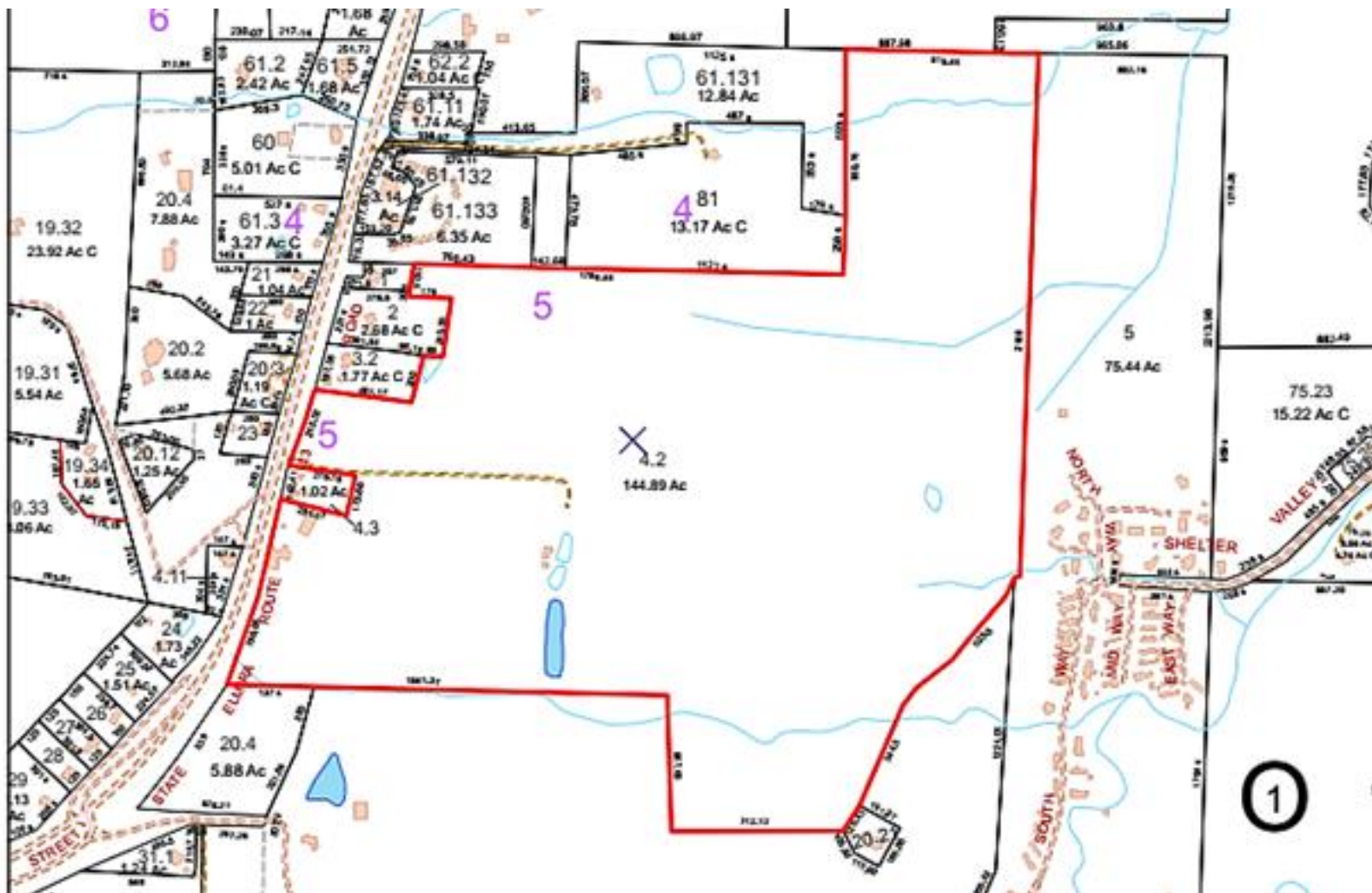


**CUSHMAN &
WAKEFIELD**



**Pyramid Brokerage
Company**

**0 Elmira Road
Newfield, NY**



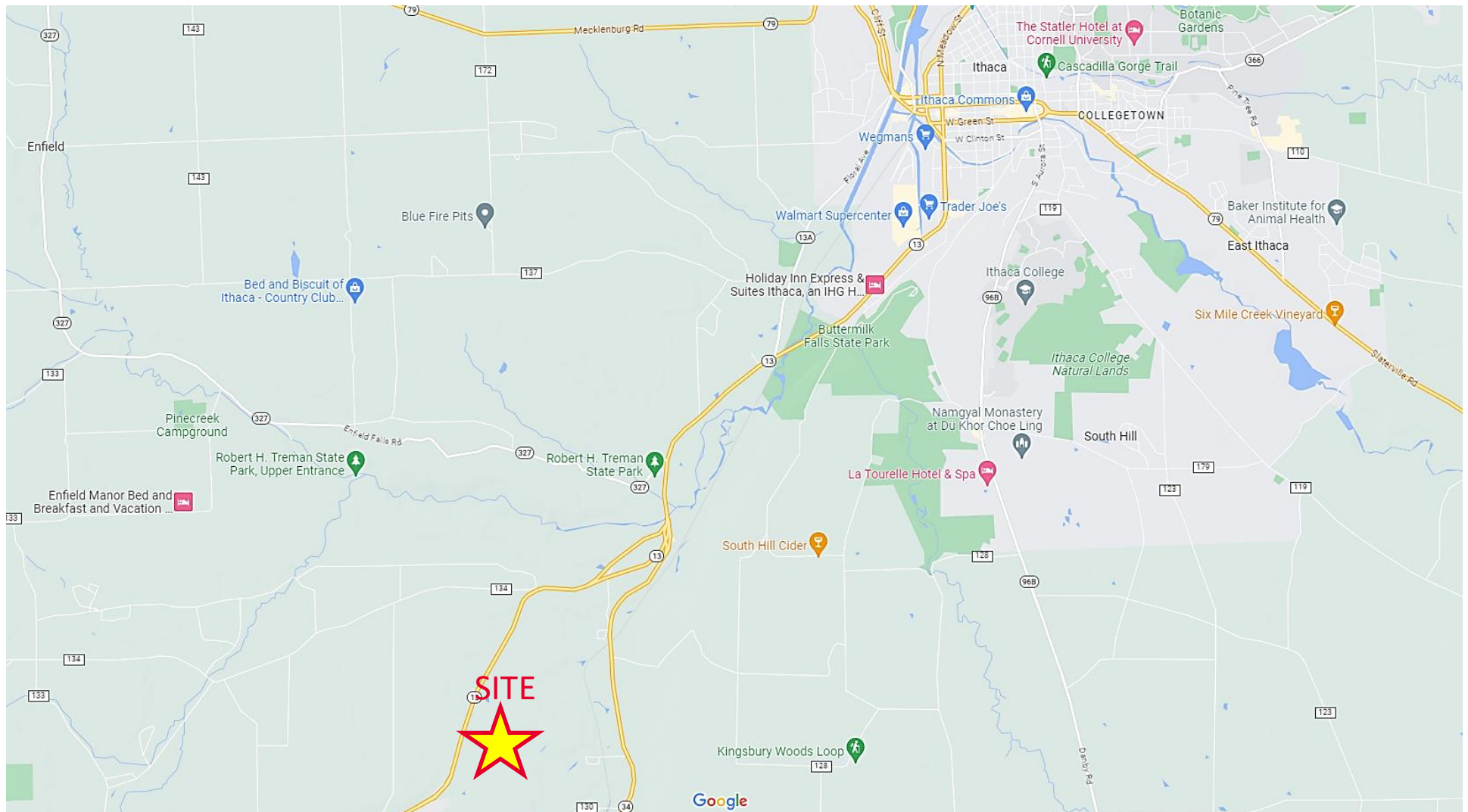


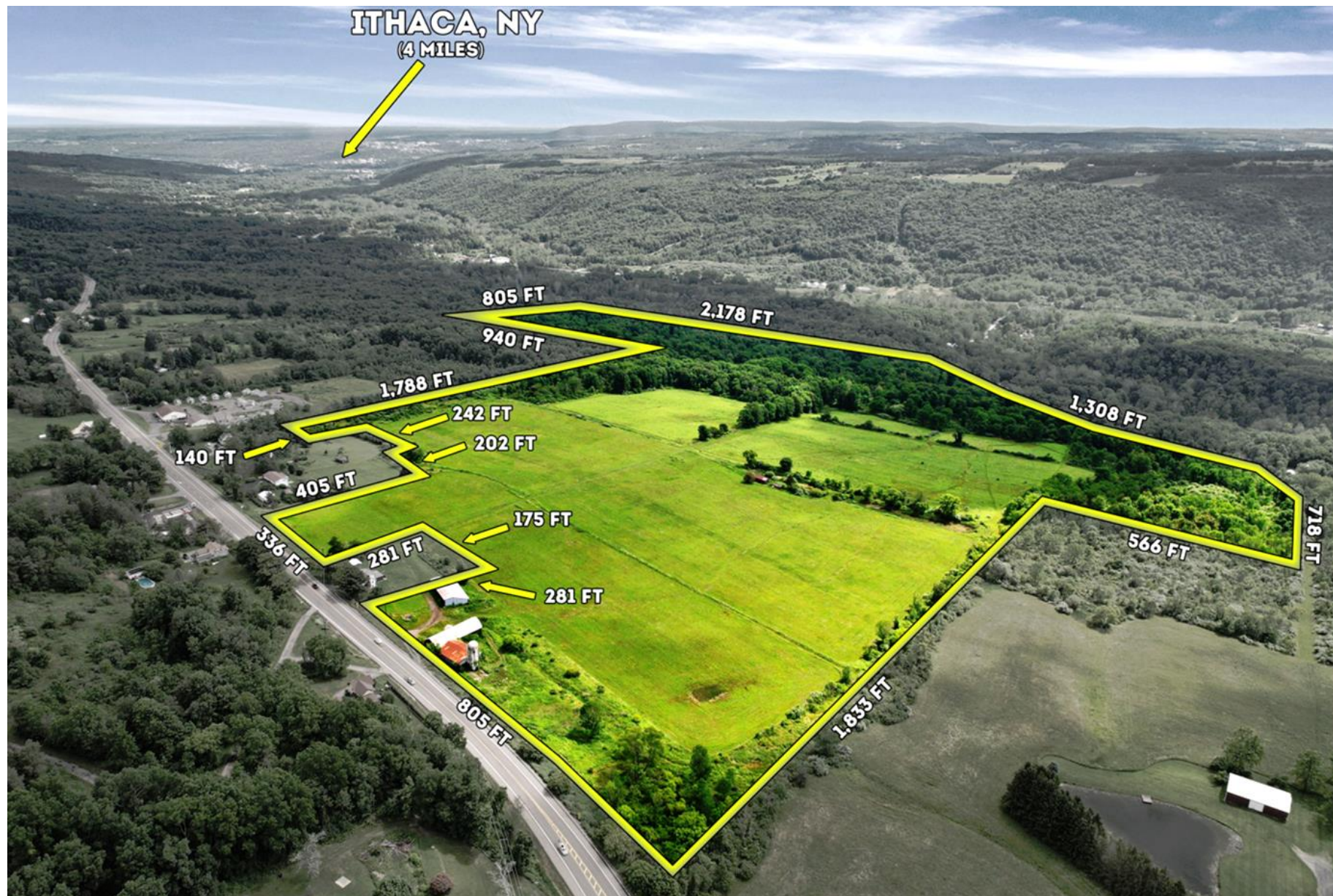
CUSHMAN &
WAKEFIELD



Pyramid Brokerage
Company

0 Elmira Road
Newfield, NY







**CUSHMAN &
WAKEFIELD**



**Pyramid Brokerage
Company**

**0 Elmira Road
Newfield, NY**





CUSHMAN &
WAKEFIELD



Pyramid Brokerage
Company

0 Elmira Road
Newfield, NY

Nearby Points of Interest



Buttermilk Falls State Park is a 811-acre (3.28 km²) state park located southwest of Ithaca, New York, United States. The falls are a 165-foot cascade and last of 10 waterfalls along the creek. The natural pool, hiking and campground draw tourist from across the Northeast region.



Robert Treman State Park has a swimming area, campgrounds, handsome stonework, and 12 stunning waterfalls.

SOURCE: <https://parks.ny.gov/parks/roberttreman/>