




# MERCHANT VILLAGE



SWQ of I-41 & HWY 60 / Slinger, WI  
Washington County Regional Intersection

MIXED USE DEVELOPMENT  
RETAIL OUTPARCELS,  
HOSPITALITY, MEDICAL, &  
LIGHT INDUSTRIAL

 +/- 35 ACRES  
SALE / GROUND LEASE / BUILD TO SUIT



DEVELOPMENT/LAND OPPORTUNITY



# MERCHANT VILLAGE



## Address

SWQ I-41 & State Road 60  
Slinger, WI 53086

## Availability

± 35 Acres - Commercial development

Parcels demisable based  
upon plan & use

## Opportunity

Sale

Ground Lease

Build-to-Suit

## Pricing

Contact broker

## Traffic Counts

26,800 VPD on State Road 60

47,300 VPD on I-41

## Property Details

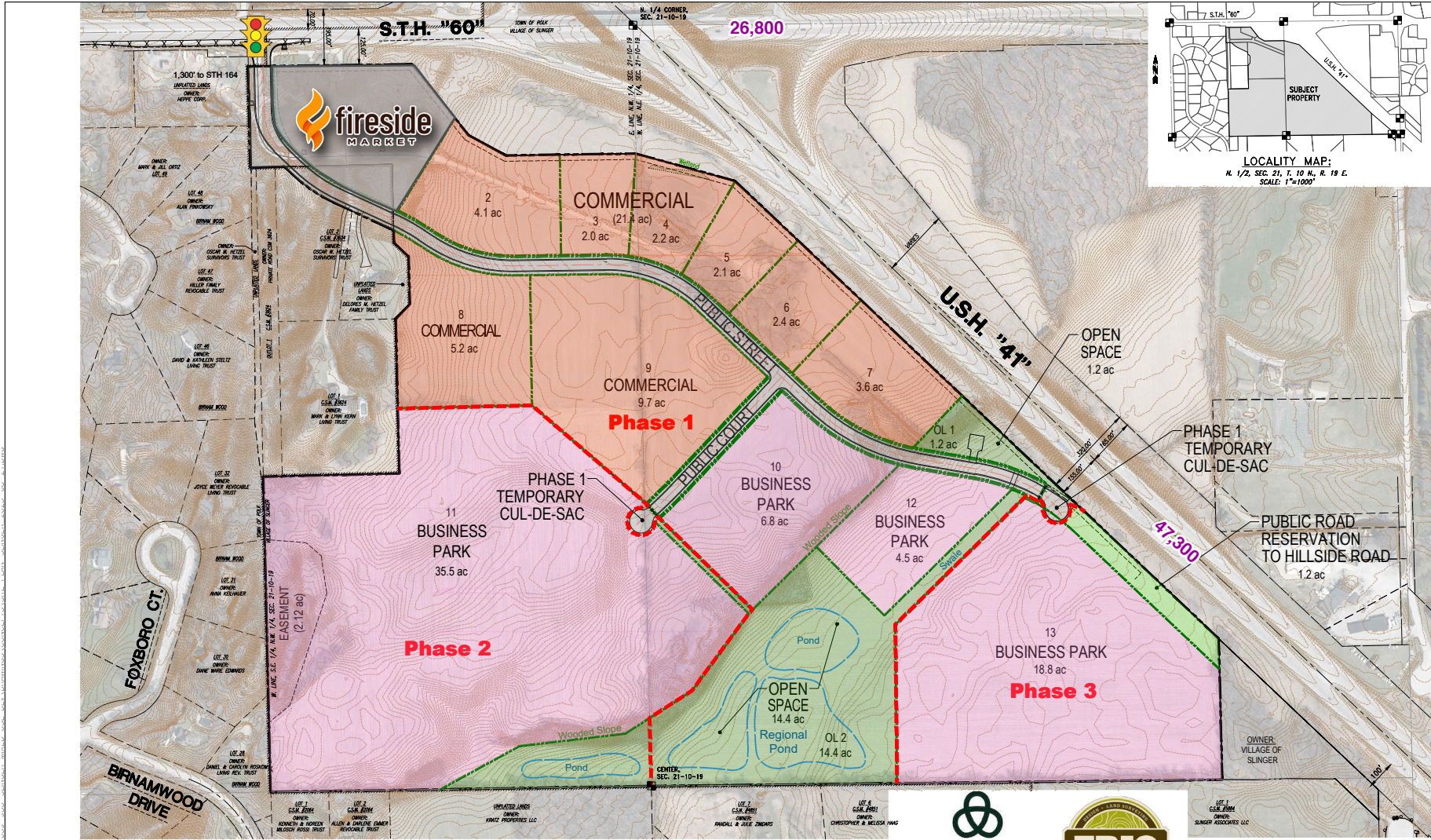
- New development consisting of ± 130 acres for commercial development
- Land uses: hospitality, medical, business park, open space/community park, light industrial, and assisted living
- Washington County Comprehensive Plan (Forecasts)
  - 37% increase in population growth
  - 44% increase in households
  - 37% increase in job growth

## Demographics

	3 MILE	5 MILES	10 MILES
POPULATION	8,686	16,681	87,595
HOUSEHOLDS	3,439	6,938	36,651
AVG HOUSEHOLD INCOME	\$114,272	\$114,015	\$100,807
DAYTIME POPULATION	6,776	13,807	83,433

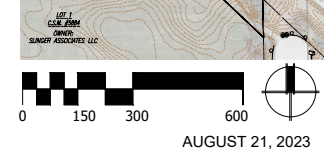


# MERCHANT VILLAGE



## Overall Site Plan - 126.2 acres

STH 60 & I-41, Village of Slinger  
Washington County, Wisconsin

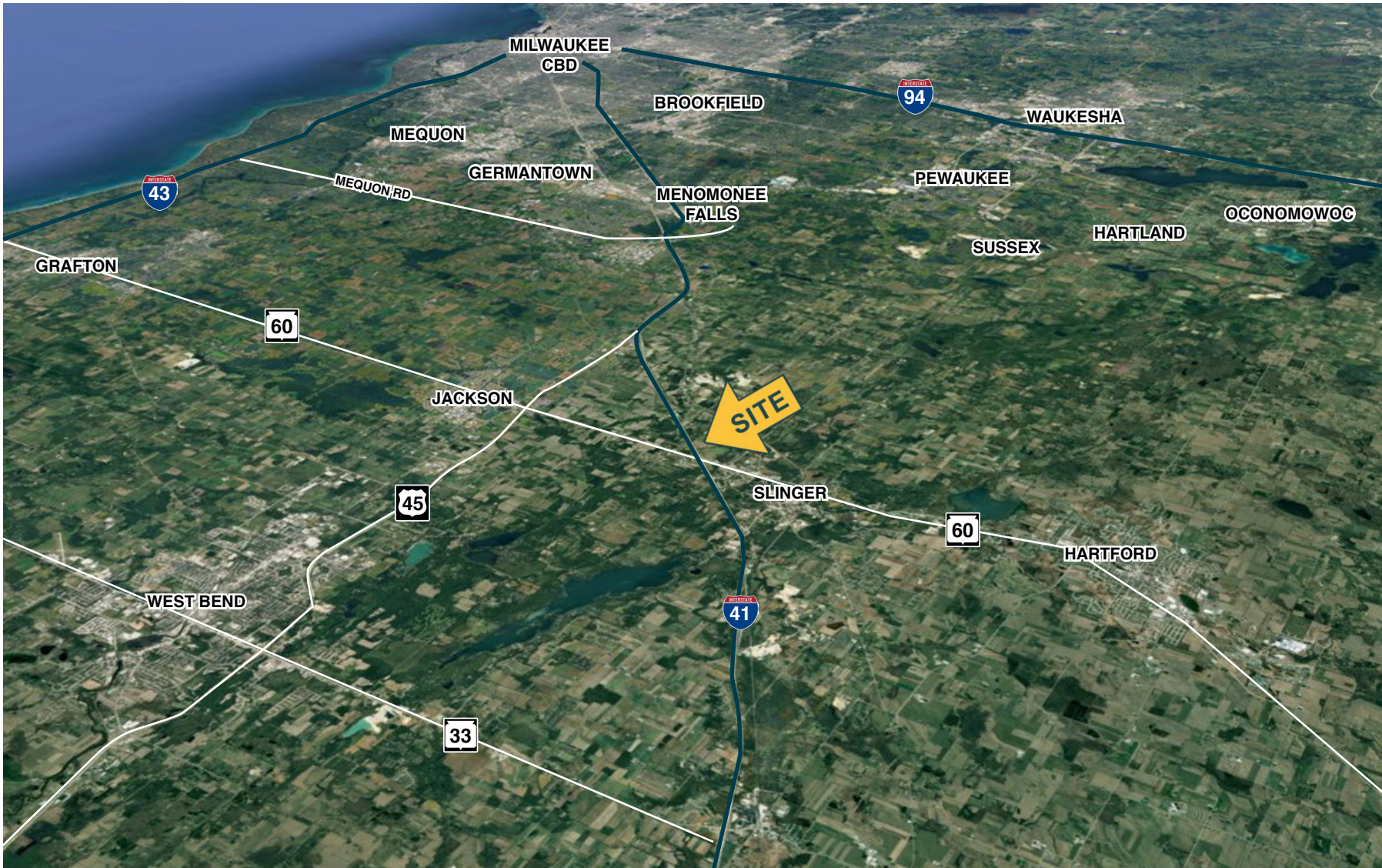


[www.merchantvillageslinger.com](http://www.merchantvillageslinger.com)

SITE PLAN



# MERCHANT VILLAGE



[www.merchantvillageslinger.com](http://www.merchantvillageslinger.com)

AERIAL



# MERCHANT VILLAGE

Scott  
Satula

T: 414.390.1424

[SSatula@MidAmericaGrp.com](mailto:SSatula@MidAmericaGrp.com)

Mike  
Fitzgerald

T: 414.390.1427

[Fitzgerald@midamericagr.com](mailto:Fitzgerald@midamericagr.com)



**MID-AMERICA**<sup>®</sup>  
Real Estate-Wisconsin, LLC

600 N. Plankinton Ave, Suite 301  
Milwaukee, Wisconsin 53203  
414.273.4600

[MidAmericaGrp.com](http://MidAmericaGrp.com)



CONTACT

# BROKER DISCLOSURE TO NON-RESIDENTIAL CUSTOMERS



Prior to negotiating on your behalf the brokerage firm, or an agent associated with the firm, must provide you the following disclosure:

## DISCLOSURE TO CUSTOMERS

You are a customer of the brokerage firm (hereinafter Firm). The Firm is either an agent of another party in the transaction or a subagent of another firm that is the agent of another party in the transaction. A broker or a salesperson acting on behalf of the Firm may provide brokerage services to you. Whenever the Firm is providing brokerage services to you, the Firm and its brokers and salespersons (hereinafter Agents) owe you, the customer, the following duties:

- The duty to provide brokerage services to you fairly and honestly.
- The duty to exercise reasonable skill and care in providing brokerage services to you.
- The duty to provide you with accurate information about market conditions within a reasonable time if you request it, unless disclosure of the information is prohibited by law.
- The duty to disclose to you in writing certain Material Adverse Facts about a property, unless disclosure of the information is prohibited by law.
- The duty to protect your confidentiality. Unless the law requires it, the Firm and its Agents will not disclose your confidential information or the confidential information of other parties.
- The duty to safeguard trust funds and other property held by the Firm or its Agents.
- The duty, when negotiating, to present contract proposals in an objective and unbiased manner and disclose the advantages and disadvantages of the proposals.

Please review this information carefully. An Agent of the Firm can answer your questions about brokerage services, but if you need legal advice, tax advice, or a professional home inspection, contact an attorney, tax advisor, or home inspector. This disclosure is required by section 452.135 of the Wisconsin statutes and is for information only. It is a plain-language summary of the duties owed to a customer under section 452.133(1) of the Wisconsin statutes.

## CONFIDENTIALITY NOTICE TO CUSTOMERS

The Firm and its Agents will keep confidential any information given to the Firm or its Agents in confidence, or any information obtained by the Firm and its Agents that a reasonable person would want to be kept confidential, unless the information must be disclosed by law or you authorize the Firm to disclose particular information. The Firm and its Agents shall continue to keep the information confidential after the Firm is no longer providing brokerage services to you.

The following information is required to be disclosed by law:

1. Material Adverse Facts, as defined in Wis. Stat. § 452.01(5g) (see "Definition of Material Adverse Facts").
2. Any facts known by the Firm or its Agents that contradict any information included in a written inspection report on the property or real estate that is the subject of the transaction.

To ensure that the Firm and its Agents are aware of what specific information you consider confidential, you may list that information below. At a later time, you may also provide the Firm or its Agents with other Information you consider to be confidential.

**NON-CONFIDENTIAL INFORMATION** (*the following information may be disclosed by the Firm and its Agents*): \_\_\_\_\_

\_\_\_\_\_  
*(Insert information you authorize to be disclosed, such as financial qualification information.)*

**CONFIDENTIAL INFORMATION:** \_\_\_\_\_

## DEFINITION OF MATERIAL ADVERSE FACTS

A "Material Adverse Fact" is defined in Wis. Stat. § 452.01(5g) as an Adverse Fact that a party indicates is of such significance, or that is generally recognized by a competent licensee as being of such significance to a reasonable party, that it affects or would affect the party's decision to enter into a contract or agreement concerning a transaction or affects or would affect the party's decision about the terms of such a contract or agreement.

An "Adverse Fact" is defined in Wis. Stat. § 452.01(1e) as a condition or occurrence that a competent licensee generally recognizes will significantly and adversely affect the value of the property, significantly reduce the structural integrity of improvements to real estate, or present a significant health risk to occupants of the property; or information that indicates that a party to a transaction is not able to or does not intend to meet his or her obligations under a contract or agreement made concerning the transaction.

## NOTICE ABOUT SEX OFFENDER REGISTRY

You may obtain information about the sex offender registry and persons registered with the registry by contacting the Wisconsin Department of Corrections on the Internet at <http://www.doc.wi.gov> or by telephone at 608-240-5830.