



SPECTRUM PROPERTIES

Commercial Real Estate Services

Spectrum Properties

Traci Perry (707) 359-2950

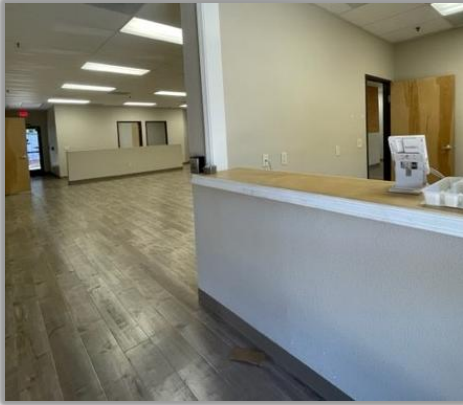
Traci@SpectrumPropertiesRE.com

www.SpectrumPropertiesRE.com

PROFESSIONAL OFFICE SPACE FOR LEASE

1241 Alamo Dr. is a professional office building close to the freeway. Easy Access to downtown area with flexible floor plans and various sized spaces.

Subject Property is located on Alamo Drive near I-80 close to the business district, shops, gas, food, and neighborhoods.



Property Features

| | |
|----------------------------|---|
| Building Size | 15, 750sf |
| Features | <ul style="list-style-type: none">• Single Story• On-Site Parking• Flexible Floor Plan• Close to Freeway |
| Suite 1 5,471 sf | \$1.07sf/mo +CAM 7 Private Offices, 3 Dedicated Work Areas, Break Room and 4 restrooms. |

FOR MORE INFORMATION CONTACT:

Traci@SpectrumPropertiesRE.com

Spectrum Properties

Commercial Real Estate Services CA DRE # 01860534

785 Alamo Dr. Ste 170

Vacaville, CA 95688

(707) 469-8000

The depiction in the included photograph of any person, entity sign, logo, or property other than Spectrum Properties (S.P) client, and the property offered by S.P, is included only, and it not intended to connote any affiliation, connection, association, sponsorship or approval, by or between that which is incidentally depicted and S.P or it's clients. This listing shall not be deemed an offer to lease, sublease or sell such property; and, in the event of any transaction for such property, no commission shall be earned by or payable to any cooperating broker expect if otherwise provided pursuant to the express terms, rates and conditions of S.P agreement with it's principal, if, as and when such commission (if any) is actually received form such principal.

